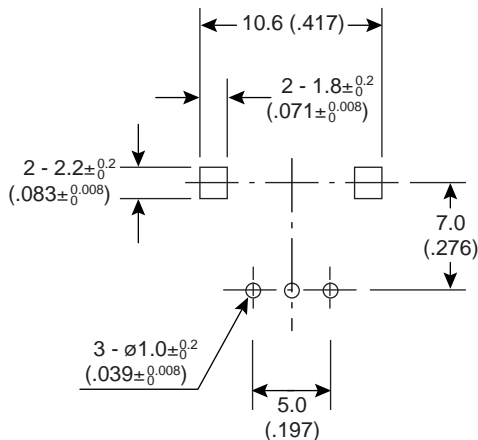
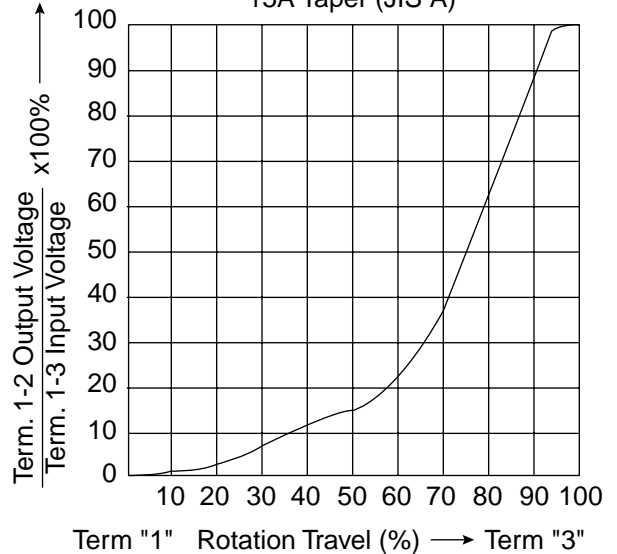
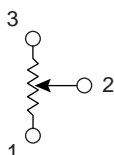


Dimensions: mm and (In.)

Standard Resistance Taper  
15A Taper (JIS A)



P.C.B. Mounting Hole Detail



**Specifications:**

- Mechanical Characteristics:
  - Total rotational angle: 280°±5°
  - Rotational torque: 10~100gf
  - Shaft stop strength: 3 kgf
  - Starting torque: 10~100gf-cm
- Electrical Characteristics:
  - Tolerance: ±30%
  - Rated wattage: 0.05W
  - Maximum working voltage: AC 50V, DC20V
  - Noise (refer to JIS C6443): > 100 mV
  - Insulation resistance: 100MΩ min. @ DC250 volts
  - Taper: Audio
  - V.R. life: 10,000 Cycles
  - Click life: 5,000 Cycles
  - Note: Meet or exceed JISC 6443 Requirements