

**PLEASE CHECK WWW.MOLEX.COM FOR LATEST PART INFORMATION**

**Part Number:** [0348030214](#)  
**Status:** **Active**  
**Description:** CTX64 Female Terminal, B-Wind, Right Payoff, SAE 20

**Documents:**

[Drawing \(PDF\)](#) [RoHS Certificate of Compliance \(PDF\)](#)

**General**

Product Family	Crimp Terminals
Series	<a href="#">34803</a>
Crimp Quality Equipment	Yes
Product Name	CTX64

**Physical**

Durability (mating cycles max)	10
Gender	Female
Material - Metal	Copper Alloy
Material - Plating Mating	Tin
Material - Plating Termination	Tin
Packaging Type	Reel
Termination Interface: Style	Crimp or Compression
Wire Insulation Diameter	1.40 to 1.90mm
Wire Size AWG	20
Wire Size mm <sup>2</sup>	0.50 TO 0.75

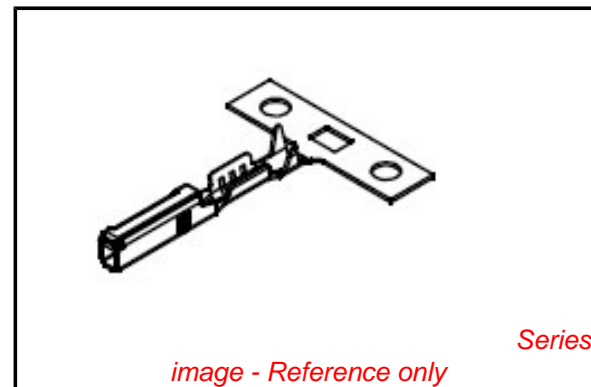
**Electrical**

Current - Maximum per Contact	7A
Voltage - Maximum	250V

**Material Info**

**Reference - Drawing Numbers**

Sales Drawing	SD-34803-001
---------------	--------------



*image - Reference only*

*Series*

**EU RoHS**

**ELV and RoHS  
Compliant**  
**REACH SVHC  
Not Reviewed**  
**Halogen-Free  
Status  
Not Reviewed**

**China RoHS**



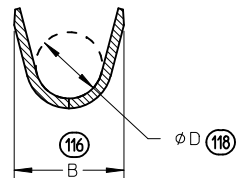
**Need more information on product  
environmental compliance?**

Email [productcompliance@molex.com](mailto:productcompliance@molex.com)  
 For a multiple part number RoHS Certificate of Compliance, [click here](#)

Please visit the [Contact Us](#) section for any non-product compliance questions.

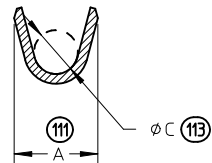
**Search Parts in this Series**  
[34803Series](#)

**Mates With**  
 0.64 by 0.64mm blade



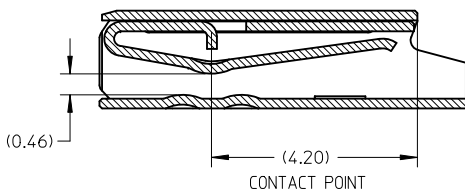
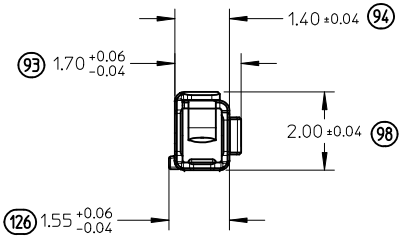
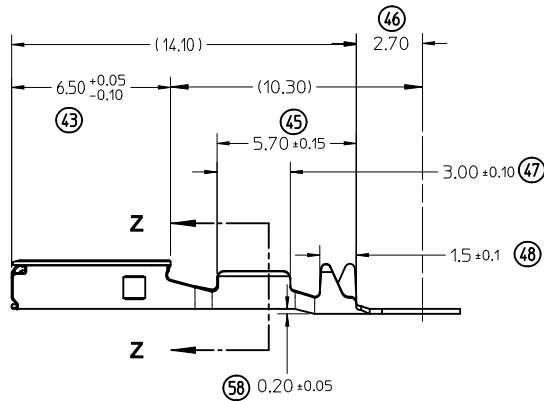
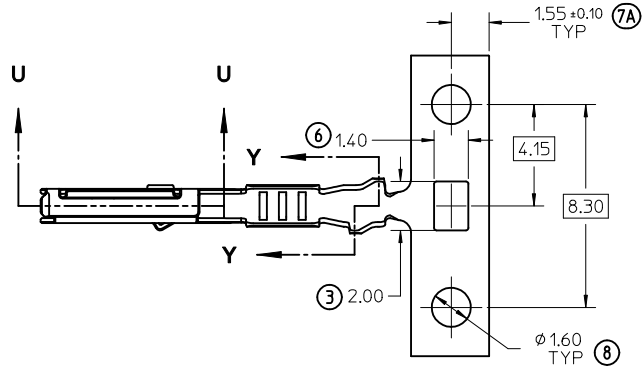
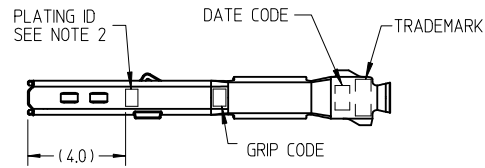
SECTION Y-Y  
SCALE 10:1

INSULATION GRIP



SECTION Z-Z  
SCALE 10:1

CONDUCTOR GRIP



SECTION U-U  
SCALE 10:1

CONTACT POINT

PART NUMBERS		GRIP CODE	WIRE GAUGE			PLATING	DIM A +0.20	DIM B +0.30	DIM C +0.10	DIM D +0.20
D-WIND (LEFT PAYOFF)	B-WIND (RIGHT PAYOFF)		ISO mm <sup>2</sup>	JASO mm <sup>2</sup>	SAE gauge					
34803-0211	34803-0213	S	0.22-0.35	0.3	22	TIN	1.80	2.40	0.90	1.36
34803-0212	34803-0214	L	0.50-0.75	0.50-0.85	20	(Sn)	2.15	2.50	1.20	1.72

ISO VIEWS  
NOT TO SCALE



NOTES: (UNLESS OTHERWISE SPECIFIED)

1. MATERIAL: COPPER ALLOY
2. PLATING MARK: TIN (Sn) - NO MARK
3. PACKAGING PER PK-31301-053
4. CRIMPING PER CS-34803-001
5. PROBING AT ANY LOCATION ON THE TERMINAL BEAM IS NOT PERMITTED

ENTER DESCRIPTION EC NO: UAU2010-1351 DR: M. FERGUSON 2010/01/20 CHK'D: HEMNANI 2010/01/20 APPR: B. MOSER 2010/01/20 DESCRIPTION REV A	QUALITY SYMBOLS ▽=0 ▽=0	GENERAL TOLERANCES (UNLESS SPECIFIED)	DIMENSION STYLE MM ONLY	SCALE 5:1	DESIGN UNITS METRIC	THIRD ANGLE PROJECTION
	mm INCH	DRAWN BY DATE K. FERGUSON 1-15-10	TITLE CTX64 FEMALE TERMINAL			
	4 PLACES ± --- ± --- 3 PLACES ± 0.08 ± --- 2 PLACES ± 0.08 ± --- 1 PLACE ± 0.08 ± ---	CHECKED BY DATE D. HEMNANI 1-15-10	Molex MOLEX INCORPORATED			
	ANGULAR ± 1 °	APPROVED BY DATE B. MOSER 1-15-10	MATERIAL NO. SEE TABLE	DOCUMENT NO. SD-34803-001	SHEET NO. 1 OF 1	

THIS DRAWING CONTAINS INFORMATION THAT IS PROPRIETARY TO MOLEX INCORPORATED AND SHOULD NOT BE USED WITHOUT WRITTEN PERMISSION