

10/100 LAN Interface Module for PC Card Applications

EPF8214S

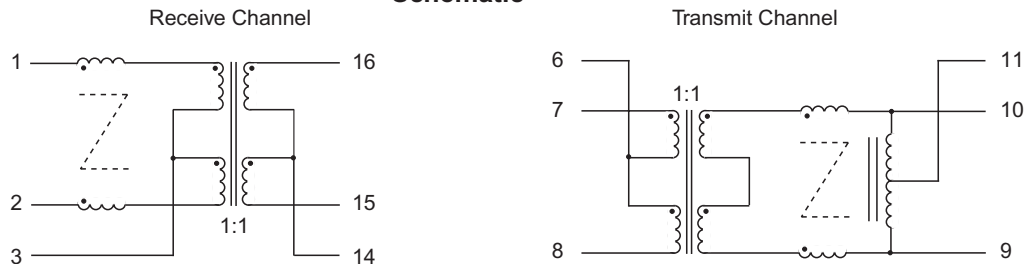
- Compatible with Intel, TDK, QSI & ICS Transceivers •
- Guaranteed to operate with 8mA DC bias at 70°C on Cable Side •
- Low profile, fully integrated with two channels •
- Complies with or exceeds IEEE 802.3, 10 BT/100 BX Standards •

Electrical Parameters @ 25°C

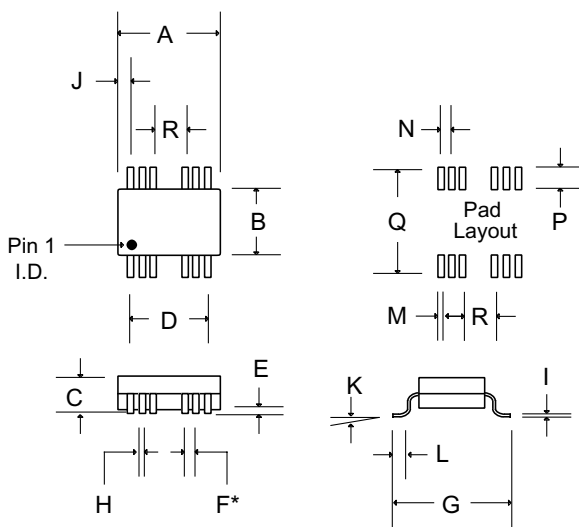
OCL @ 70°C	Insertion Loss (dB Min.)	Return Loss (dB Min.)			Common Mode Rejection (dB Min.)			Crosstalk (dB Min.) [Between Channels]			
		100 KHz- 100 MHz	30 MHz	60 MHz	80 MHz	1-30 MHz	100 MHz	500 MHz	30 MHz	62 MHz	100 MHz
100 KHz, 0.1 Vrms 8 mA DC Bias											
Cable Side											
350 μ H	-2.0	-18	-14	-12	-30	-25	-10	-50	-45	-40	

• Isolation : 1500 Vrms • Cable Side Impedance : 100 Ω •

Schematic



Package



Dimensions

Dim.	(Inches)			(Millimeters)		
	Min.	Max.	Nom.	Min.	Max.	Nom.
A	.455	.475	.465	11.55	12.07	11.81
B	.330	.350	.340	8.38	8.89	8.64
C	.075	.085	.080	1.90	2.03	2.03
D	---	---	.350	---	---	8.89
E	.005	.010	.007	.127	.254	.178
F	---	---	.050	---	---	1.27
G	.450	.470	.460	11.43	11.94	11.68
H	.018	.022	.020	.457	.559	.508
I	.008	.012	.010	.203	.305	.254
J	---	---	.057	---	---	1.45
K	0°	8°	4°	0°	8°	4°
L	.025	.045	.035	.635	1.14	.889
M	---	---	.030	---	---	.762
N	---	---	.050	---	---	1.27
P	---	---	.090	---	---	2.29
Q	---	---	.520	---	---	13.21
R	---	---	.200	---	---	5.08