

PLEASE CHECK WWW.MOLEX.COM FOR LATEST PART INFORMATION

Part Number: [0512171005](#)
Status: **Active**
Description: 2.00mm (.079") Wire-to-Board Connector Retainer, 10 circuits

Documents:

3D Model	Product Specification PS-51216-006 (PDF)
Drawing (PDF)	Product Specification PS-51216-007 (PDF)
Product Specification PS-51216-005 (PDF)	RoHS Certificate of Compliance (PDF)

General

Product Family	Accessories
Series	51217
Component Type	Retainer
Product Name	N/A

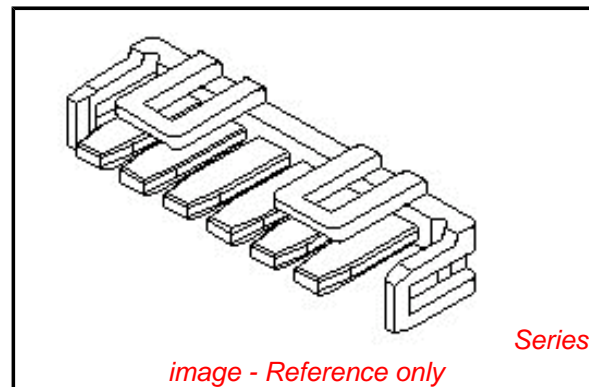
Physical

Circuits (Loaded)	10
Color - Resin	Gray
Material - Resin	Polyester
Number of Rows	1
Packaging Type	Bag
Temperature Range - Operating	-25°C to +85°C

Material Info

Reference - Drawing Numbers

Product Specification	PS-51216-005, PS-51216-006, PS-51216-007, RPS-51216-003, RPS-51216-004, RPS-51216-005, RPS-51216-006, RPS-51216-008, RPS-51216-009, RPS-51216-010, RPS-51216-011, RPS-51216-012
Sales Drawing	SD-51217-003



EU RoHS

**ELV and RoHS
Compliant**
**REACH SVHC
Contains SVHC: No**
**Halogen-Free
Status**

China RoHS



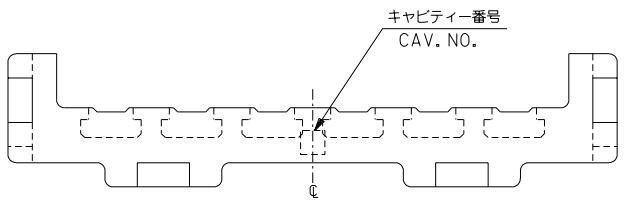
**Need more information on product
environmental compliance?**

Email productcompliance@molex.com
 For a multiple part number RoHS Certificate of
 Compliance, [click here](#)

Please visit the [Contact Us](#) section for any
 non-product compliance questions.

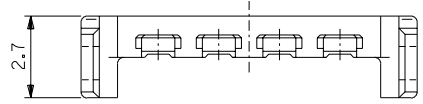
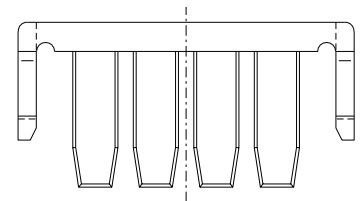
Search Parts in this Series
[51217Series](#)

Use With
[51216](#) , [51227](#)

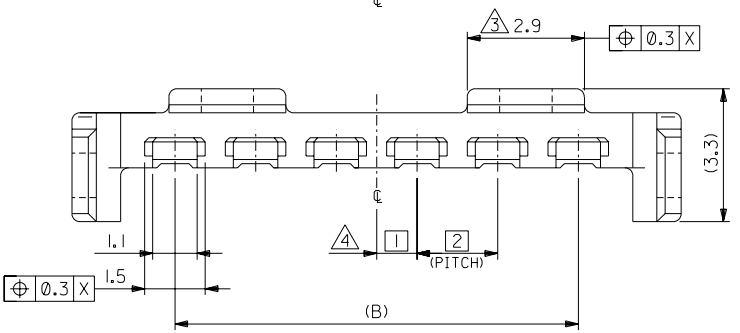
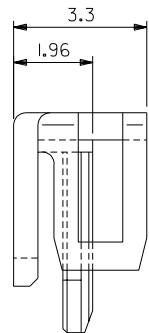
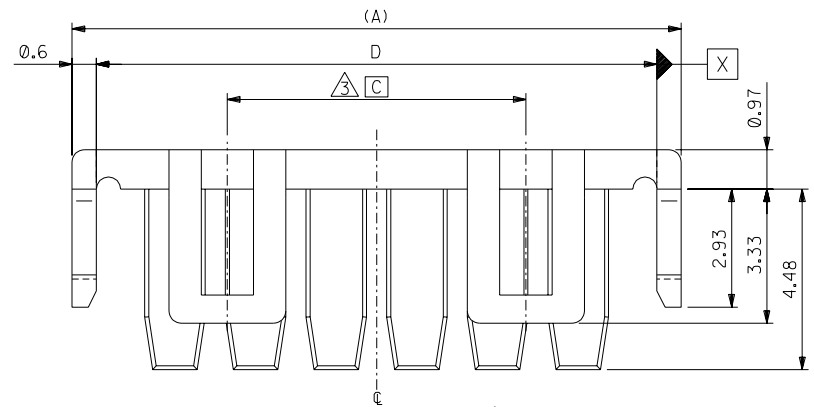


注記 NOTES

1. 適合ターミナル : 59370シリーズ
APPLICABLE TERMINAL : 59370 SERIES
2. 適合ハウジング : 51216シリーズ
APPLICABLE HOUSING : 51216 SERIES
- ③ 5~15種に適用。
APPLY 5-15 CIRCUITS.
- ④ 偶数極に適用。
APPLY EVEN CIRCUIT PRODUCTS.



4種以下品形状
DESIGN OF UNDER 4CKTS.
(SCALE 6:1)



31.9	7.4	28	33.1	51217-1505	15
29.9		26	31.1	-1405	14
27.9		24	29.1	-1305	13
25.9		22	27.1	-1205	12
23.9		20	25.1	-1105	11
21.9		18	23.1	-1005	10
19.9		16	21.1	-0905	9
17.9		14	19.1	-0805	8
15.9		12	17.1	-0705	7
13.9		10	15.1	-0605	6
11.9	7.4	8	13.1	-0505	5
9.9		6	11.1	-0405	4
7.9		4	9.1	-0305	3
5.9		2	7.1	51217-0205	2
		D	C	B	A
					MATERIAL NO.
					CKT.

DO NOT SCALE DRAWING

EC NO. DRWN: CHK: APPR:	EC NO. DRWN: CHK: APPR:	EC NO. DRWN: CHK: APPR:	REVISED	MATERIAL 材料	GENERAL TOLERANCES: (UNLESS SPECIFIED) 一般公差	51217-**-05		MODEL NO.		DIMENSIONS:		SHT	REV
			EC NO. J2004-1674 DRWN:K.SETO '03/12/22 CHK: H.TAKASE APPR:J.MIYAZAWA 12/22			PBTP, UL94V-0 [色:灰色] [COLOR: GRAY]	SCALE 8:1	DESIGN UNITS <input checked="" type="checkbox"/> mm <input type="checkbox"/> INCH	<input checked="" type="checkbox"/> THIRD ANGLE <input type="checkbox"/> PROJECTION	<input type="checkbox"/> mm <input type="checkbox"/> INCH	<input type="checkbox"/> mm <input type="checkbox"/> mm	<input checked="" type="checkbox"/> mm ONLY	
			RELEASED	FINISH 仕上げ	WIRE RANGE 適用線径範囲	10 UNDER 未満	±0.2	DRAWN BY & DATE T.YASUI '00/ 2/22		TITLE: 2.0 mm WIRE TO BOARD CONN. RETAINER			
			EC NO. JC2000-0550 DRWN:T.YASUI '00/2/22 CHK: T.YAMAGUCHI APPR:M.FUKUSHIMA 2/22			//	10 OVER 30 UNDER 未満	±0.25	CHECKED BY & DATE T.YAMAGUCHI '00/ 2/22				
			REV	INS. RANGE 被覆外径	30 OVER 以上	±0.3	APPROVED BY & DATE M.FUKUSHIMA '00/ 2/22		MOLEX MOLEX INCORPORATED				
				//	ANGLE 角度	±3°	CAD FILENAME 51217003.S01						MATERIAL NO. SEE CHART

THIS DRAWING CONTAINS INFORMATION THAT IS PROPRIETARY TO MOLEX INCORPORATED AND SHOULD NOT BE USED WITHOUT WRITTEN PERMISSION.