

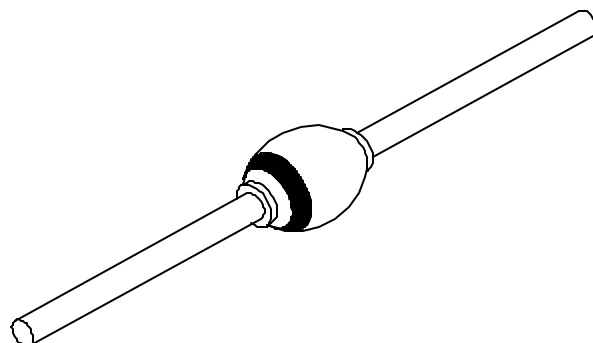
SDRS614LL

250 mA
2,200 VOLTS
FAST RECOVERY
HIGH VOLTAGE RECTIFIER

Designer's Data Sheet

FEATURES:

- **Fast Reverse Recovery: 300 nsec Maximum**
- **PIV 2,200 Volts**
- **Hermetically Sealed**
- **Void-Free Construction**
- **Metallurgically Bonded**
- **175°C Maximum Operating Temperature**
- **Miniature Package**
- **TX, TXV, and Space Level Screening Available**
- **Lead Free Termination Available, Contact Factory**



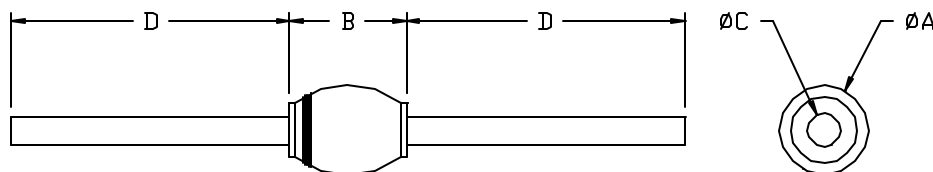
ELECTRICAL CHARACTERISTICS ^{1/ 2/ 3/ 4/}

Part Number	Peak Inverse Voltage	Average Rectified Current	Reverse ^{5/} Recovery Time	Maximum Junction Capacitance	Maximum Surge Current (1 Cycle)	Typical Thermal Impedance	Maximum Forward Voltage		Maximum Reverse Current	
Symbol	PIV	I _O	t _{rr}	C _J	I _{FSM}	θ _{JL}	V _F		I _R @ 80% of PIV	
Units	Volts	mA	nsec	pF	Amps	°C/W	Volts		μA	
Conditions			Max	V _R = 100V, f _T = 1MHz		L = ¼"	60mA	250mA	25°C	100°C
	2,200	250	300	5.0	20	45	1.7	2.2	1.0	30

NOTES:

- 1/ Unless Otherwise Specified, All Electrical Characteristics @25°C.
- 2/ Operating and testing over 10,000 V/inch may require encapsulation or immersion in suitable dielectric material.
- 3/ Maximum lead temperature for soldering is 250°C, 3/8" from case for 5 sec. maximum.
- 4/ Operating and storage temperature: -65°C to +175°C.
- 5/ Recovery Conditions I_F = 1/2 A, I_R = 1.0 A rec. to 1/4 A.

PACKAGE OUTLINE: AXIAL RECTIFIER



DIMENSIONS

CODE	MIN	MAX
A	---	.135"
B	---	.170"
C	.028"	.032"
D	1.0"	---

NOTE: All specifications are subject to change without notification. SCD's for these devices should be reviewed by SSDI prior to release.

DATA SHEET #: RC0100A

DOC