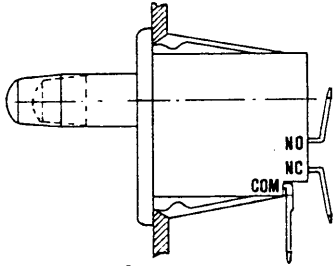


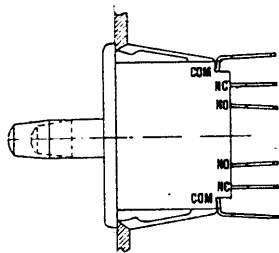
910-569



**UF 68, UF 69 Pushbutton, single pole**

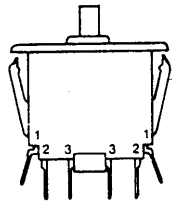
Electrical Data: 0,1A, 125 VAC  
10(4)A, 250 VAC  
Dimensions (WxHxD) in mm: 23,1 x 26,6 x 13,7  
Button: Various versions  
Important Features: Panel mount pushbutton,  
Single pole, S.P.D.T.,  
Momentary - push-pull (reset) -  
"cheat"  
Approvals:  
UL, CSA, VDE

2



**UF 78, UF 79 Pushbutton, double pole**

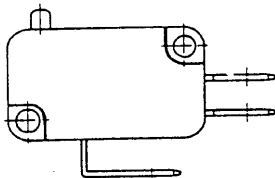
Electrical Data: 0,1A, 125 VAC  
10(4)A, 250 VAC  
Dimensions (WxHxD) in mm: 31,5 x 26,6 x 13,7  
Button: Various versions  
Important Features: Panel mount pushbutton,  
Double pole, S.P.D.T.,  
Momentary - push-pull (reset) -  
"cheat"  
Approvals:  
UL, CSA, VDE



**F 81, F 82, F 83, F 84**

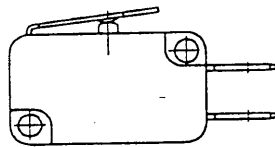
**Line-interrupt Switch**

Electrical Data: 0,1A, 250 VAC to  
16(6)A, 250 VAC  
Dimensions (WxHxD) in mm: 31,5 x 37,5 x 13,3  
Important Features: Panel mount pushbutton,  
Approvals:  
UL, CSA, VDE



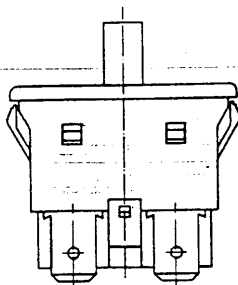
**E 36 Miniature Switch**

Electrical Data: up to 25A, 250 VAC  
Dimensions (WxHxD) in mm: 27,8 x 15,9 x 10,3  
Auxiliary Actuator: Various versions  
Important Features: Without approvals



**DD 1, DD 2, DD 3 Pushbutton-Miniature Switches**

Electrical Data: 0,1A to 16(4)A, 250 VAC  
Dimensions (WxHxD) in mm: 27,7 x 15,8 x 11,9  
Auxiliary Actuator: Various versions  
Important Features: Simple operating force  
max. 250 cN, line interruption  
Contact gap >4mm,  
N.O., single pole  
Approvals: VDE, UL, CSA,  
SEMKO



**FA 1, FA 2, FA 3, FA 4, FA 5 Pushbutton**

Electrical Data: 0,1 (0,05)A, 250 VAC to  
16 (4)A, 250 VAC  
Dimensions (WxHxD) in mm: 26,4 x 26 x 15,4  
Important Features: Panel mount pushbutton,  
Line interruption,  
Contact gap >3mm,  
N.O., single pole, double pole  
Approvals:  
On request