

# 10/100 PC CARD LAN MAGNETICS SOLUTIONS PCMCIA



462 Boston St - Topsfield, MA 01983 - Phone: 978-887-8050 - Fax: 978-887-5434

- Half port and single port designs for maximum layout flexibility
- Compatible with Intel, TDK, QSI, and ICS
- Low profile packages from .094”(2.39mm)to .078”(1.98mm)for PC Card and Card bus applications
- Storage temperature range: -40°C to +125°C.



## Electrical Specifications @ 25°C Operating Temperature range:0°C to +70°C

HI-POT Isolation:1500Vrms.

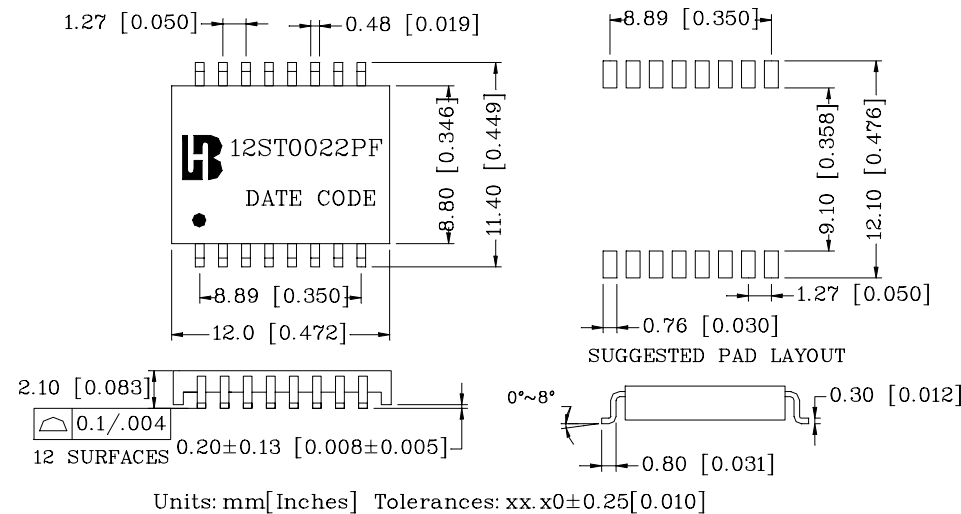
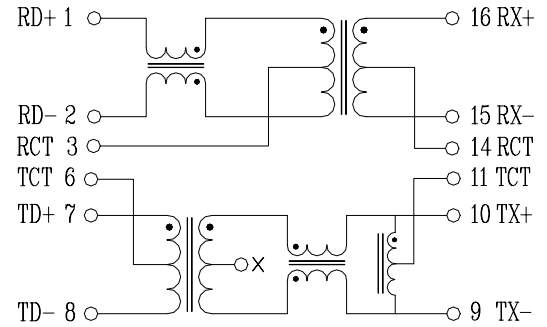
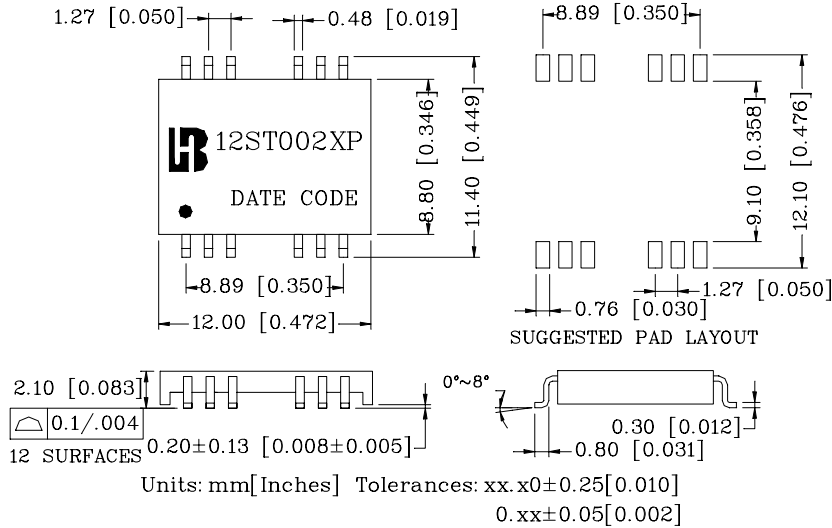
“\$” Primary OCL inductance :350 uH Min@ 100KHz/0.2V

| Part Number  | Turn ratio (±5%) |       | Insertion loss (dB Max)<br>0.3-100 MHz | Return loss (dB Min) |       |       | Cross talk (dB Min) |        |        | Differential to Common Mode Rejection (dB Min) |        |        |        |
|--------------|------------------|-------|--|----------------------|-------|-------|---------------------|--------|--------|--|--------|--------|--------|
|              | RX               | TX    |  | 30MHz                | 60MHz | 80MHz | 30 MHz              | 62 MHz | 100MHz | 30 MHz   | 50 MHz | 100MHz | 150MHz |
| 12ST0022P\$  | 1CT:1CT          | 1CT:1 | -2.0                                   | -18                  | -14   | -12   | -50                 | -45    | -40    | -40  | -35    | -30    | -20    |
| 12ST0022PF\$ | 1CT:1CT          | 1CT:1 | -2.0                                   | -18                  | -14   | -12   | -50                 | -45    | -40    | -40  | -35    | -30    | -20    |
| 12ST0023P    | 1CT:1CT          | 1CT:1 | -2.0                                   | -18                  | -14   | -12   | -50                 | -45    | -40    | -40  | -35    | -30    | -20    |

## Mechanicals

## Schematics

### 12ST002XX



Bothhand USA. e-mail: sales@bothhandusa.com http://www.bothhand.com

462 Boston St - Topsfield, MA 01983 - Phone: 978-887-8050 - Fax: 978-887-5434