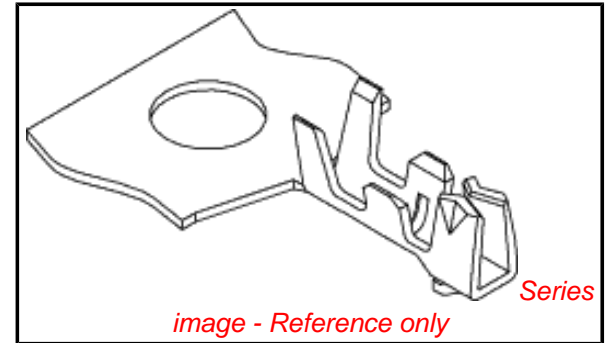


**PLEASE CHECK WWW.MOLEX.COM FOR LATEST PART INFORMATION**

**Part Number:** **0500798100**  
**Status:** **Active**  
**Overview:** picoblade  
**Description:** 1.25mm (.049") Pitch PicoBlade™ Crimp Terminal, 26-28 AWG, Bag

**Documents:**

<a href="#">Drawing (PDF)</a>	<a href="#">Product Specification PS-51021-023 (PDF)</a>
<a href="#">Product Specification PS-51021-001 (PDF)</a>	<a href="#">Product Specification PS-51021-025 (PDF)</a>
<a href="#">Product Specification PS-51021-002 (PDF)</a>	<a href="#">Product Specification PS-51021-026 (PDF)</a>
<a href="#">Product Specification PS-51021-009 (PDF)</a>	<a href="#">Product Specification PS-51021-027 (PDF)</a>
<a href="#">Product Specification PS-51021-010 (PDF)</a>	<a href="#">Product Specification PS-51021-028 (PDF)</a>
<a href="#">Product Specification PS-51021-011 (PDF)</a>	<a href="#">RoHS Certificate of Compliance (PDF)</a>
<a href="#">Product Specification PS-51021-022 (PDF)</a>	



**General**

Product Family	Crimp Terminals
Series	<u>50079</u>
Crimp Quality Equipment	Yes
Overview	<u>picoblade</u>
Product Name	PicoBlade™

**Physical**

Gender	Female
Material - Metal	Phosphor Bronze
Material - Plating Mating	Tin
Material - Plating Termination	Tin
Packaging Type	Bag
Plating min: Mating (µin)	36
Plating min: Mating (µm)	0.90
Plating min: Termination (µin)	36
Plating min: Termination (µm)	0.90
Termination Interface: Style	Crimp or Compression
Wire Insulation Diameter	0.50-1.04mm (.020-.041")
Wire Size AWG	26, 28
Wire Size mm²	N/A

**Material Info**

**Reference - Drawing Numbers**

Product Specification	PS-51021-001, PS-51021-002, PS-51021-009, PS-51021-010, PS-51021-011, PS-51021-022, PS-51021-023, PS-51021-025, PS-51021-026, PS-51021-027, PS-51021-028, RPS-501576-001, RPS-51021-001, RPS-51021-002, RPS-51021-003, RPS-51021-004, RPS-51021-006, RPS-51021-007, RPS-51021-008, RPS-51021-010, RPS-51021-011, RPS-51021-013, RPS-51021-014, RPS-51021-015, RPS-51021-016, RPS-51021-017, RPS-51021-018, RPS-51021-021, RPS-51021-023, RPS-51021-024, RPS-51021-025, RPS-51021-026, RPS-51021-027, RPS-51021-028, RPS-51021-029, RPS-51021-030, RPS-51021-031, RPS-51021-032, RPS-51021-033, RPS-51021-037, RPS-51021-038, RPS-51021-039, RPS-51021-040, RPS-51021-041, RPS-51021-043, RPS-51021-044, RPS-51021-045, RPS-51021-046, RPS-51021-047, RPS-51021-048, RPS-51021-050,
-----------------------	--

**EU RoHS**  
**ELV and RoHS**  
**Compliant**  
**REACH SVHC**  
**Contains SVHC: No**  
**Halogen-Free**  
**Status**  
**Halogen-Free**

**China RoHS**



**Need more information on product environmental compliance?**

Email [productcompliance@molex.com](mailto:productcompliance@molex.com)  
 For a multiple part number RoHS Certificate of Compliance, [click here](#)

Please visit the [Contact Us](#) section for any non-product compliance questions.

**Search Parts in this Series**  
50079Series

**Mates With**  
50125 Crimp Terminal, 50133 Crimp Terminal

**Use With**  
51021 Crimp Housing

**Application Tooling | FAQ**  
*Tooling specifications and manuals are found by selecting the products below. Crimp Height Specifications are then contained in the Application Tooling Specification document.*

<b>Global</b>	<b>Product #</b>
<b>Description</b>	
Hand Crimp Tool for <u>0638190300</u>	
1.25mm (.049") Pitch	
PicoBlade™ Crimp	
Terminals, 26-32	
AWG	
Hand Crimp Tool for <u>0638190400</u>	
1.25mm (.049") Pitch	

Sales Drawing

RPS-51021-051, RPS-51021-052, RPS-51021-053,  
RPS-51021-054, RPS-51021-055, RPS-51021-056,  
RPS-51021-057, RPS-51021-058, RPS-51021-059,  
RPS-51021-060, RPS-51021-061, RPS-51021-062,  
RPS-51021-063, RPS-51021-064, RPS-51021-065,  
RPS-51021-066, RPS-51021-067, RPS-51021-068,  
RPS-51021-071, RPS-51021-072, RPS-51021-073,  
RPS-51021-074, RPS-51021-076, RPS-51021-077,  
RPS-51021-078, RPS-51021-079, RPS-51021-081,  
RPS-51021-083, RPS-51021-084, RPS-51021-085,  
RPS-51021-086, RPS-51021-089, RPS-51021-091,  
RPS-51021-092, RPS-51021-096, RPS-51021-097,  
RPS-51021-101, RPS-53398-002, RPS-53398-037,  
RPS-53398-038  
SD-50079-001, SD-51021-002

PicoBlade™ Crimp Terminals, 26-32 AWG	
Extraction Tool	<u>0011030043</u>
<b>Japan</b>	
<b>Description</b>	<b>Product #</b>
Extraction Tool	<u>0570726000</u>
Hand Crimp Tool	<u>0571775000</u>

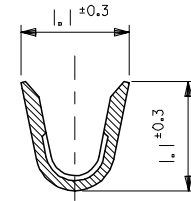
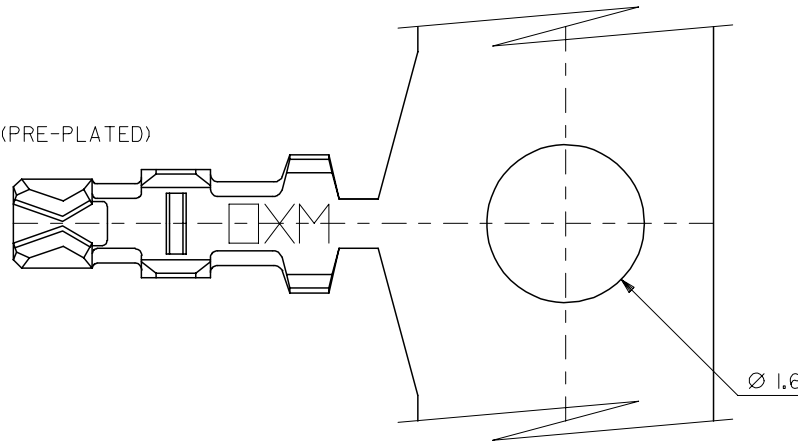
This document was generated on 05/19/2010

**PLEASE CHECK [WWW.MOLEX.COM](http://WWW.MOLEX.COM) FOR LATEST PART INFORMATION**

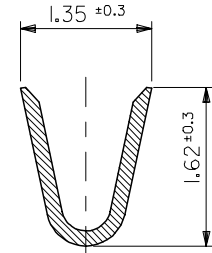
10 9 8 7 6 5 4 3 2 1

注記  
NOTES

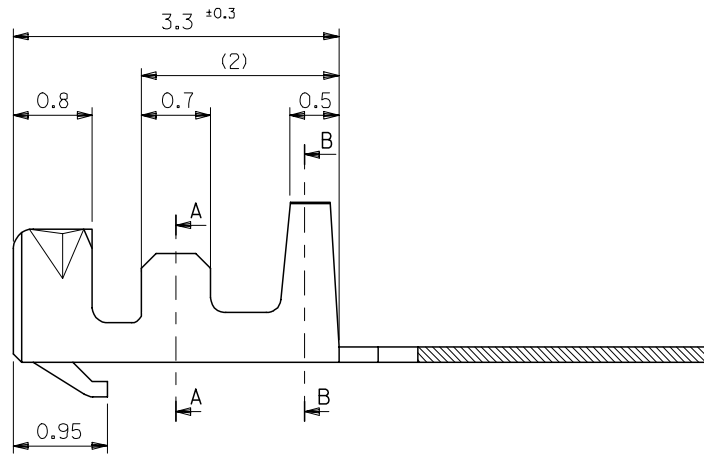
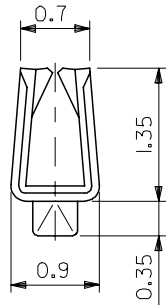
1. 適合ハウジング：51021シリーズ  
APPLICABLE HOUSING : 51021 SERIES
2. メッキ仕様 PLATING  
錫 0.9μm MIN. リフロー処理 (前メッキ)  
TIN 0.9μm MIN. REFLOW TREATMENT (PRE-PLATED)



SECT. A-A



SECT. B-B



50079-8100	バラ状 LOOSE
50079-8000	連鎖状 CHAIN
MATERIAL NO.	端子形状 FORM

MODEL NO. 50079-8\*00

材料 MATERIAL リン青銅 (t=0.15) PHOSPHOR BRONZE 仕上げ FINISH —#— 適用電線範囲 WIRE RANGE AWG #26-28 被覆外径 INS. RANGE φ0.5-1.04	REVISED EC NO: J2005-1535 DRAWN:SUZUKI 2004/11/30 CHKD:KTOJO 2004/11/30 APPR:NUKITA 2004/12/06 G	GENERAL TOLERANCES (UNLESS SPECIFIED)		DIMENSION STYLE MM ONLY		SCALE 20:1	DESIGN UNITS METRIC	THIRD ANGLE PROJECTION	
		10 UNDER	±0.2	DRAWN BY HHIRAMOT	DATE 92/10/21	TITLE 1.25 WIRE TO BOARD CONN. CRIMP REC. TERMINAL -LEAD FREE-			
		10 OVER 30 UNDER	±0.25	CHECKED BY SKUNISHI	DATE 98/07/07				
		30 OVER	±0.3	APPROVED BY MFUKUSHI	DATE 98/07/07	MATERIAL NO. SD-50079-001			
ANGULAR ±3 °		DRAFT WHERE APPLICABLE MUST REMAIN WITHIN DIMENSIONS		SEE CHART		DOCUMENT NO. SD-50079-001	SHEET NO. 1 OF 1		
SIZE A3 THIS DRAWING CONTAINS INFORMATION THAT IS PROPRIETARY TO MOLEX INCORPORATED AND SHOULD NOT BE USED WITHOUT WRITTEN PERMISSION									

10 9 8 7 6 5 4 3 2 1

F

F

E

E

D

D

C

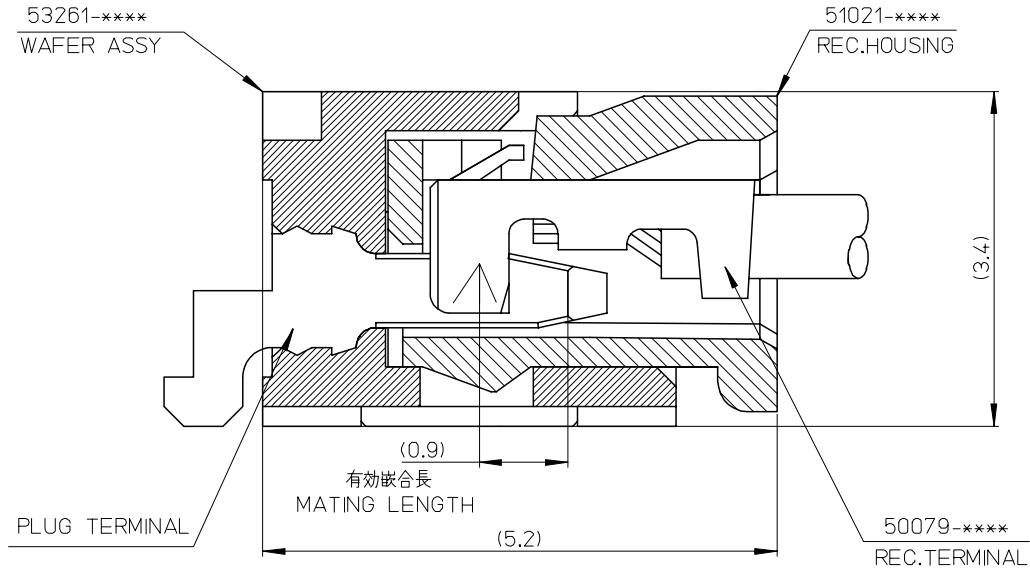
C

B

B

A

A



53261-****	WAFER ASSY	MODEL NO./MATERIAL NO.
50079-****	TERMINAL	
51021-****	HOUSING	

RELEASED EC NO: J2006-2426 DRWN: A0YAGI 2006/02/02 CHKD: YMAEDA 2006/02/03 APPR: NUKITA 2006/02/07	GENERAL TOLERANCES (UNLESS SPECIFIED)		DIMENSION STYLE MM ONLY		SCALE ---	DESIGN UNITS METRIC	THIRD ANGLE PROJECTION	
	10 UNDER	± ---	DRAWN BY Y. A0YAGI	DATE 2006/01/30	TITLE 1.25 W-TO-B CONN. 51021,53261 MATING CROSS SECTION			
	10 OVER 30 UNDER	± ---	CHECKED BY Y. MAEDA	DATE 2006/01/30	MOLEX INCORPORATED			
	30 OVER	± ---	APPROVED BY N. UKITA	DATE 2006/01/30	DOCUMENT NO. SD-51021-002			
	ANGULAR	± --- °	MATERIAL NO. SEE CHART		SHEET NO. 1 OF 1			
0	DRAFT WHERE APPLICABLE MUST REMAIN WITHIN DIMENSIONS		SIZE A3		THIS DRAWING CONTAINS INFORMATION THAT IS PROPRIETARY TO MOLEX INCORPORATED AND SHOULD NOT BE USED WITHOUT WRITTEN PERMISSION			

9

8

7

6

5

4

3

2