

PLEASE CHECK WWW.MOLEX.COM FOR LATEST PART INFORMATION

Part Number: [0015244745](#)
Status: **Active**
Overview: [disk drive power connector](#)
Description: 5.08mm (.200") Pitch Disk Drive Power Connection System Header, Vertical, Through Hole, 4 Circuits, Lead-free, 3.58mm (.141") PC Tail Length, without PCB Locator Peg

Documents:

[3D Model](#) [Product Specification PS-8981-4V4/4R1-P \(PDF\)](#)
[Drawing \(PDF\)](#) [RoHS Certificate of Compliance \(PDF\)](#)

Agency Certification

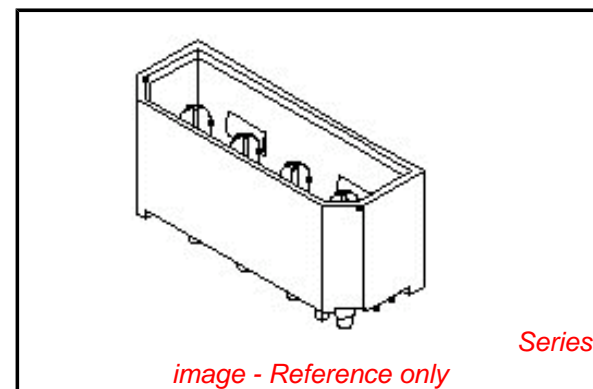
CSA LR19980
 UL E29179

General

Product Family PCB Headers
 Series [8981](#)
 Application Wire-to-Board
 MolexKits Yes
 Overview [disk drive power connector](#)
 Product Name Disk Drive Power

Physical

Breakaway No
 Circuits (Loaded) 4
 Circuits (maximum) 4
 Color - Resin Black
 Durability (mating cycles max) 25
 First Mate / Last Break No
 Flammability 94V-0
 Glow-Wire Compliant No
 Guide to Mating Part No
 Keying to Mating Part None
 Lock to Mating Part Yes
 Mated Height (in) 0.944 In
 Mated Height (mm) 23.99 mm
 Material - Metal Phosphor Bronze
 Material - Plating Mating Tin
 Material - Plating Termination Tin
 Material - Resin High Temperature Thermoplastic
 Number of Rows 1
 Orientation Vertical
 PC Tail Length (in) 0.141 In
 PC Tail Length (mm) 3.58 mm
 PCB Locator No
 PCB Retention None
 PCB Thickness Recommended (in) 0.062 In
 PCB Thickness Recommended (mm) 1.60 mm
 Packaging Type Tray
 Pitch - Mating Interface (in) 0.200 In
 Pitch - Mating Interface (mm) 5.08 mm
 Plating min: Mating (µin) 101.6
 Plating min: Mating (µm) 2.54
 Plating min: Termination (µin) 101.6
 Plating min: Termination (µm) 2.54
 Polarized to Mating Part Yes



EU RoHS

ELV and RoHS Compliant
REACH SVHC
 Not Reviewed
Halogen-Free Status

China RoHS



Not Halogen-Free

Need more information on product environmental compliance?

Email productcompliance@molex.com
 For a multiple part number RoHS Certificate of Compliance, [click here](#)

Please visit the [Contact Us](#) section for any non-product compliance questions.

Search Parts in this Series

[8981Series](#)

Mates With

[15244048](#) (8981-4P) Disk Drive Power Connection System Female Crimp Housing with Terminal [02081201](#) (8980-3C) or [02081202](#) (8980-3L)

Polarized to PCB	No
Shrouded	Fully
Stackable	No
Surface Mount Compatible (SMC)	Yes
Temperature Range - Operating	-40°C to +85°C
Termination Interface: Style	Through Hole

Electrical

Current - Maximum per Contact	10A
Voltage - Maximum	250V

Solder Process Data

Duration at Max. Process Temperature (seconds)	10
Lead-free Process Capability	SMC & Wave Capable (TH only)
Max. Cycles at Max. Process Temperature	1
Process Temperature max. C	265

Material Info

Old Part Number	A-8981-4V5-LF
-----------------	---------------

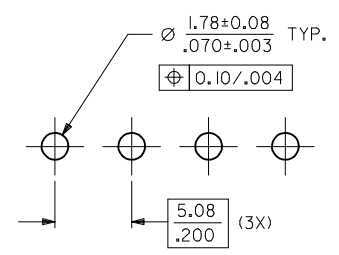
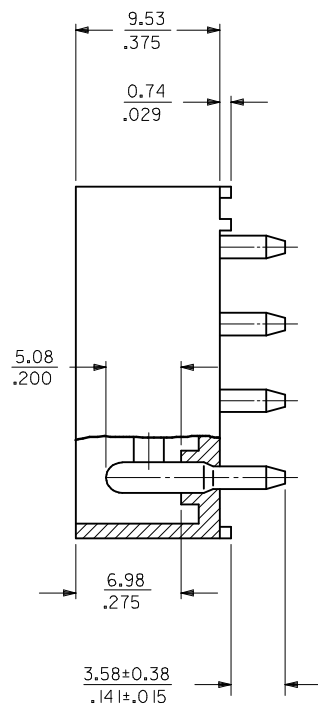
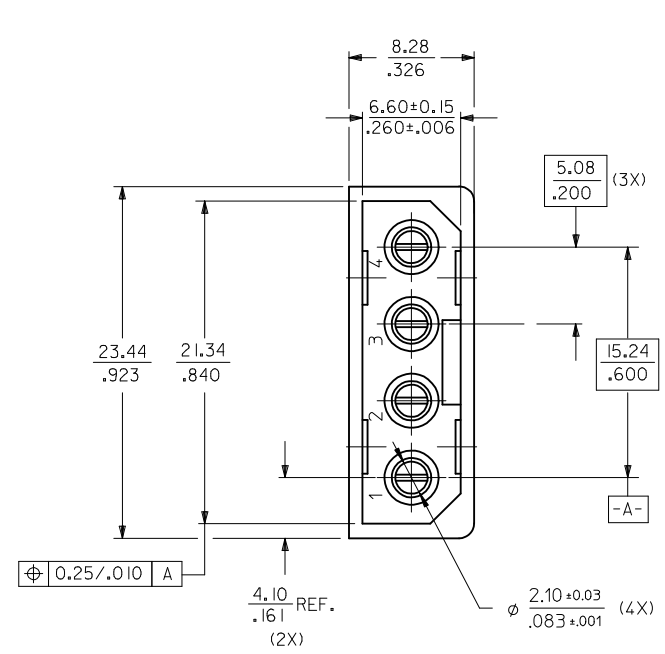
Reference - Drawing Numbers

Product Specification	PS-8981-4V4/4R1-P
Sales Drawing	SD-8981-4V5

This document was generated on 06/07/2010

PLEASE CHECK WWW.MOLEX.COM FOR LATEST PART INFORMATION

MAT'L NO.	ENG NO.
15-24-4745	A-8981-4V5-LF



RECOMMENDED PCB HOLE LAYOUT

NOTES :

1. PLATING
POSTPLATE 0.00254/.000100 MIN. TIN
OVER 0.00127/.000050 MIN. NICKEL OVERALL.
2. PART TO MATE WITH HOUSING 8981-4P2
AND TERMINAL 8980-3*.
3. PRODUCT SPEC PS-8981-4V4/4R1-P APPLIES.
4. MATERIAL:
HOUSING - PCT, GLASS FILLED, UL94V-0
COLOR BLACK
TERMINAL - PHOS BRONZE

ADD CKT INDICATION EC NO: S2009-0836 DRWN:SKANG 2009/05/08 CHKD:ATSEE 2009/05/08 APPR:MLONG 2009/05/11	QUALITY SYMBOLS	GENERAL TOLERANCES (UNLESS SPECIFIED)	DIMENSION STYLE	SCALE	DESIGN UNITS	THIRD ANGLE PROJECTION															
	$\nabla=0$ $\square=0$	<table border="1"> <tr> <td></td> <td>mm</td> <td>INCH</td> </tr> <tr> <td>4 PLACES</td> <td>± ---</td> <td>± ---</td> </tr> <tr> <td>3 PLACES</td> <td>± ---</td> <td>± .008</td> </tr> <tr> <td>2 PLACES</td> <td>± 0.20</td> <td>± ---</td> </tr> <tr> <td>1 PLACE</td> <td>± ---</td> <td>± ---</td> </tr> </table>		mm	INCH	4 PLACES	± ---	± ---	3 PLACES	± ---	± .008	2 PLACES	± 0.20	± ---	1 PLACE	± ---	± ---	MM/IN	NTS	METRIC	
		mm	INCH																		
	4 PLACES	± ---	± ---																		
3 PLACES	± ---	± .008																			
2 PLACES	± 0.20	± ---																			
1 PLACE	± ---	± ---																			
DESCRIPTION	ANGULAR ± 3 °	DRAWN BY	DATE	TITLE																	
REV	DRAFT WHERE APPLICABLE MUST REMAIN WITHIN DIMENSIONS	SKTOH	1991/10/17	POWER CONNECTOR, 4 CKTS VERTICAL MOUNT																	
1		CHECKED BY	DATE	MOLEX INCORPORATED																	
		MLA1	1991/10/17	DOCUMENT NO.																	
		APPROVED BY	DATE	SD-8981-4V5																	
		RWONG	1991/10/18	SHEET NO.																	
		MATERIAL NO.		1 OF 1																	
		SEE TABLE		THIS DRAWING CONTAINS INFORMATION THAT IS PROPRIETARY TO MOLEX INCORPORATED AND SHOULD NOT BE USED WITHOUT WRITTEN PERMISSION																	