

PLEASE CHECK WWW.MOLEX.COM FOR LATEST PART INFORMATION

Part Number: **0002095106**
Status: **Active**
Overview: [standard_093](#)
Description: 2.36mm (.093") Diameter, Standard .093" Pin and Socket Crimp Terminal, Series 1189, Female, with Gold (Au) Plated Brass Contact, 14-20 AWG, Bag

Documents:

[Drawing \(PDF\)](#) [RoHS Certificate of Compliance \(PDF\)](#)
[Product Specification PS-02-09 \(PDF\)](#)

General

| | |
|-------------------------|------------------------------|
| Product Family | Crimp Terminals |
| Series | 1189 |
| Crimp Quality Equipment | Yes |
| Overview | standard_093 |
| Product Name | Standard .093" |

Physical

| | |
|--------------------------------|--------------------------|
| Gender | Female |
| Material - Metal | Brass |
| Material - Plating Mating | Gold |
| Material - Plating Termination | Nickel |
| Packaging Type | Bag |
| Plating min: Mating (µin) | 15 |
| Plating min: Mating (µm) | 0.38 |
| Plating min: Termination (µin) | 30 |
| Plating min: Termination (µm) | 0.76 |
| Termination Interface: Style | Crimp or Compression |
| Wire Insulation Diameter | 1.65-4.06mm (.065-.160") |
| Wire Size AWG | 14, 16, 18, 20 |
| Wire Size mm ² | N/A |

Material Info

Old Part Number 1189-A(P550)L

Reference - Drawing Numbers

Product Specification [PS-02-09](#)
 Sales Drawing [SD-1189*](#)

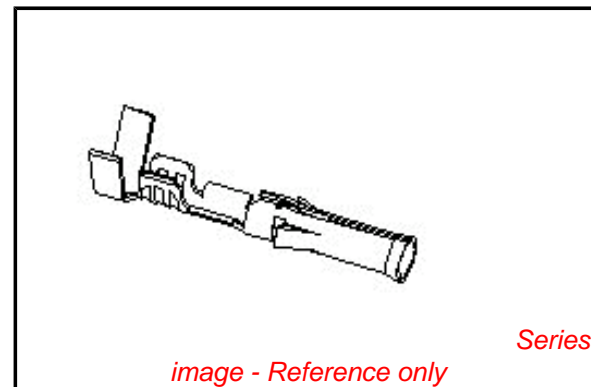


image - Reference only

EU RoHS

**ELV and RoHS
Compliant**
**REACH SVHC
Contains SVHC: No**
**Halogen-Free
Status**

China RoHS



**Need more information on product
environmental compliance?**

Email productcompliance@molex.com
 For a multiple part number RoHS Certificate of Compliance, [click here](#)

Please visit the [Contact Us](#) section for any non-product compliance questions.

Search Parts in this Series

[1189Series](#)

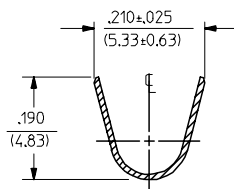
Application Tooling | [FAQ](#)

Tooling specifications and manuals are found by selecting the products below. Crimp Height Specifications are then contained in the Application Tooling Specification document.

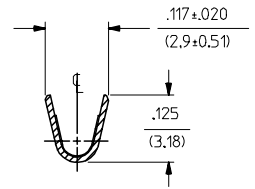
Global

| Description | Product # |
|----------------------------------|----------------------------|
| Hand Crimp Tool | 0638191100 |
| Insertion Tool | 0011020003 |
| Extraction Tool | 0011030006 |
| Hand Crimper - DISTRIBUTION ONLY | 0638111000 |

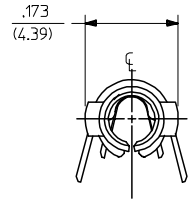
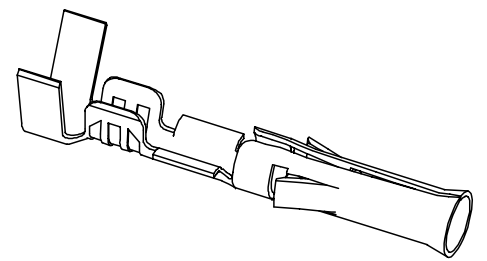
| PART NO. | ENG. NO. |
|------------|---------------|
| 02-09-1104 | 1189-A(P901L) |
| 02-09-1102 | 1189-A(P901) |
| 02-09-5111 | 1189-A(P591L) |
| 02-09-5102 | 1189-A(P591) |
| 02-09-5106 | 1189-A(P550)L |
| 02-09-5100 | 1189-A(P550) |



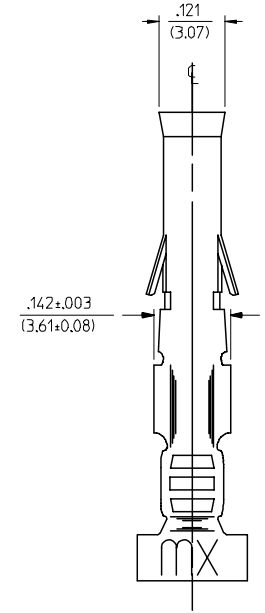
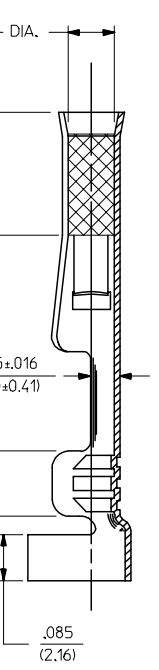
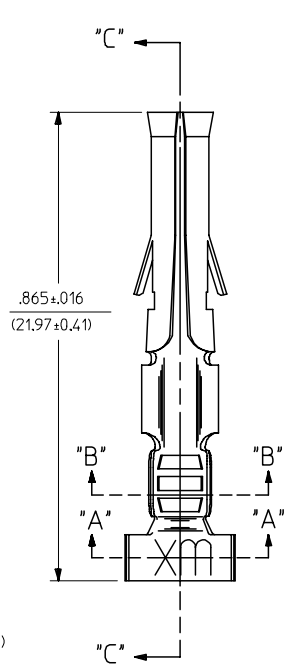
SECT. "A-A"



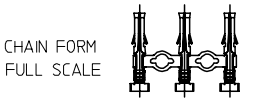
SECT. "B-B"



LEGEND
 1189-A(****)*
 *FORM
 BLANK=CHAIN
 L=LOOSE
 P=PREPLATE
 BLANK=POSTPLATE
 FINISH CODE



SECT. "C-C"



- NOTES:
- MATERIAL: CARTRIDGE BRASS, ALLOY #C26000, .010/(0.25) THICK
 - FINISH CODES:
 - 901 HOT TIN DIP .000020/(0.00051) MIN.
 - 591 SELECT GOLD PLATE .000050/(0.00127) MIN. IN CONTACT AREA, OVER .000050/(0.00127) MIN. NICKEL OVERALL WITH .000010/(0.00025) MAX. GOLD FLASH OVERALL.
 - 550 SELECT GOLD PLATE .000015/(0.00038) MIN. IN CONTACT AREA, OVER .000030/(0.00076) MIN. NICKEL OVERALL WITH .000010/(0.00025) MAX. GOLD FLASH OVERALL.
 - *THE PRIMARY SHIPPING CARTON WILL BE LABELED, "COMPLIANT TO RoHS DIRECTIVE 2002/95/EC AND ELV ANNEX OF DIRECTIVE 2000/53/EC", AND CARTONS WITHOUT THIS LABEL MAY CONTAIN PRODUCT WITH TIN-LEAD.
 - THIS PART CONFORMS TO PROD. SPEC. 02-09.
 - PACKAGING INFORMATION: NOT AVAILABLE
 - TERMINAL FOR USE WITH .093/(2.36) SERIES HOUSINGS AND WILL ACCEPT 14 THRU 20 AWG WIRE.
 - INSERTION FORCE: 3.5 LBS. MAX. WHEN TERMINAL IS INSERTED INTO AN .093 SERIES HOUSING.
 - RETENTION: 20 LBS. MIN. FROM HOUSING.

| | | | | | | | | | |
|--|-------------------------------|--|-----------------------|--------------------------|----------------------|---------------------|----------------------|---------------------------|---|
| ADDED PARTS FC NO: UCP2006-1061 DRAWN: PETERSON 2005/11/18 CHKD: FSI TH 2005/11/29 APPR: FSI TH 2005/12/02 | QUALITY SYMBOLS ▽=0 ▽=0 | GENERAL TOLERANCES (UNLESS SPECIFIED) | | DIMENSION STYLE IN/MM | | SCALE 6:1 | DESIGN UNITS INCH | THIRD ANGLE PROJECTION | |
| | | 4 PLACES ± --- ± --- | 3 PLACES ± --- ± .010 | 2 PLACES ± 0.25 ± .014 | 1 PLACE ± 0.35 ± --- | ANGULAR ±1/2° | DRAWN BY GEP | DATE 1987/10/26 | TITLE CRIMP TERMINAL, FEMALE, .093/(2.36) DIA. 14-20 AWG |
| C1 | DESCRIPTION | DRAFT WHERE APPLICABLE MUST REMAIN WITHIN DIMENSIONS | | SEE CHART | | MATERIAL NO. RAS | | DOCUMENT NO. SD-1189-* | |
| | | MATERIAL NO. RAS | | DATE 1987/10/26 | | MATERIAL NO. RAS | | DATE 1987/10/26 | |
| SHEET NO. 1 OF 1 | | MATERIAL NO. RAS | | | | | | | |