

# Crystal filter QF10.7-0020/4



## Application

- 4 pol filter
- i.f.- filter
- use in mobile and stationary transceivers

## Limiting values

		Unit	Value
Nominal frequency	$f_0$	MHz	10.7
Centre frequency	$f_c$	MHz	$10.7 \pm 200$ Hz
Insertion loss		dB	< 12.0
Pass band at 6.0dB		kHz	$\pm 85 \dots 109$ Hz
Ripple in pass band	$f_c \pm 0.085$ kHz	dB	~Gaussian
Stop band attenuation	$f_c \pm 0.22$ kHz	dB	> 20
	$f_0 \pm 1 \dots 10$ kHz	dB	> 60
Group delay distortion	within 3 dB bandwidth	ms	< 1
IP3 at input level 0 dBm	$f_0 - 5$ kHz; $f_0 + 5$ kHz	dBm	> 25
Level nonlinearity	at input level $-50 \dots 0$ dBm	dB	< 1.5

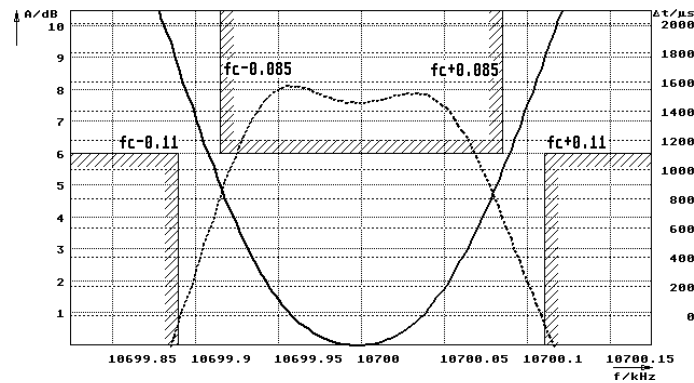
## Terminating impedance Z

R1  C1	Ohm/pF	50    0
R2  C2	Ohm/pF	50    0

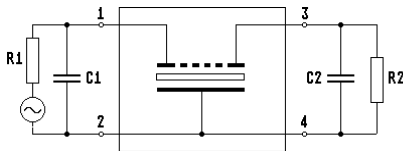
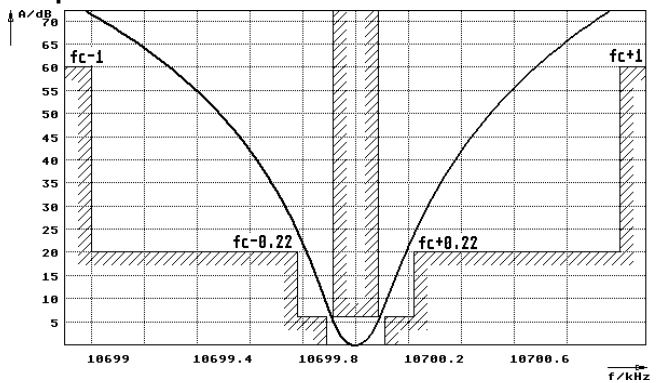
Operating temp. range	°C	+10...+60
Storage temp. range	°C	-25... +80
Environment conditions		according to CF001

## Characteristics QF10.7-0020/4

### Pass band



### Stop band



- Pin connections:
- |   |               |
|---|---------------|
| 1 | Input         |
| 2 | Ground-Input  |
| 3 | Output        |
| 4 | Ground-Output |

