

# PC Board Fuseclips for 5mm Diameter Fuses

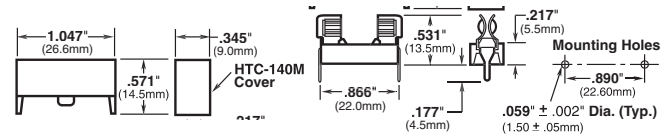
## HTC-15M, HTC-140M\*\*

PCB Mounted Fuse Holder & Snap-On Cover

Voltage Rating: 250V, 6.3A, 1.6W

HTC-15M (fuse holder), HTC-140M (natural cover),  
HTC-150M\* (transparent cover)

\*Available in bulk only. Use this format: BK/HTC-150M



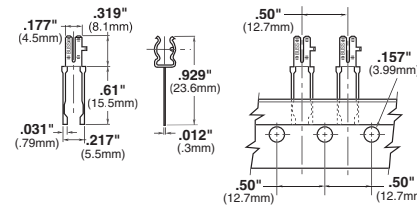
## HTC-200M\*\*

PCB Mounted Fuseclip

Construction: Tin-plated bronze

Tape and Fan Fold packed

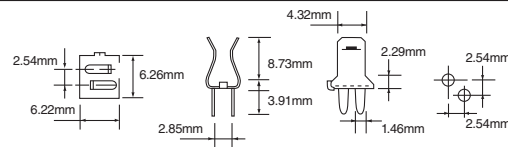
Ammo Pack (AP/HTC-200M) 1000 pieces per box



## HTC-210M\*\*

PCB Mounted Fuseclip with End Stops

Construction: Tin-plated brass

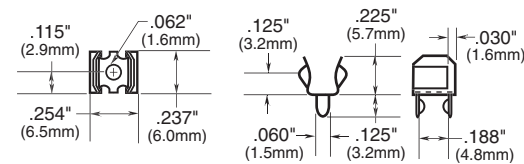


## 1A3399 Series\*\*

PCB Fuseclips with End Stops & Straight Leads

Catalog Numbers	Clip Material*	Finish
1A3399-01	Beryllium copper*	Silver
1A3399-04	Beryllium copper*	Bright tin
1A3399-10	Spring bronze	Bright tin

\*Beryllium copper recommended for amps higher than 15 amps (1/4" clips).

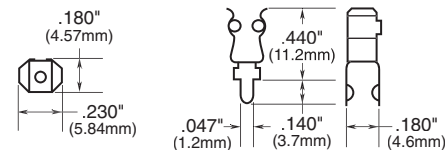


## 1A5018 Series\*\*

PCB High Profile Fuseclips with End Stops & Straight Leads

Catalog Numbers	Clip Material*	Finish
1A5018-07	Spring bronze	Silver
1A5018-10	Spring bronze	Bright tin

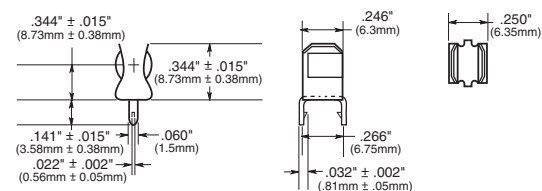
\*Beryllium copper recommended for amps higher than 15 amps (1/4" clips).



## 1A5601 Series\*\*

PCB Fuseclips (0-7A)

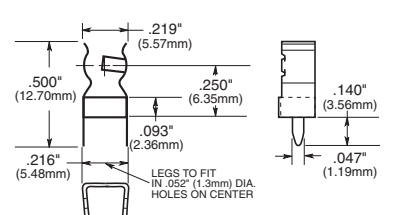
Catalog Number	Clip Material	Finish
1A5601	Cartridge brass	Bright tin



## 1A5602 Series\*\*

PCB Fuseclips (0-7A)

Catalog Number	Clip Material	Finish
1A5602	Cartridge brass	Bright tin



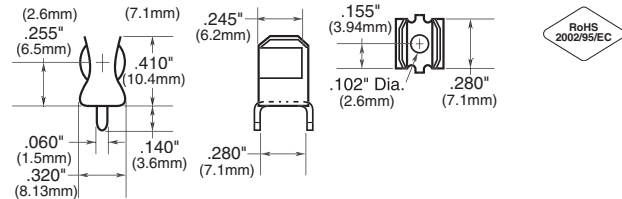
\*\*For RoHS compliant version, add "-R" option code suffix to part number.

# PC Board Fuseclips for 1/4" Diameter Fuses

## 1A3398 Series\*\*

PCB Fuseclips without End Stops or Straight Leads

Catalog Numbers	Clip Material	Finish
1A3398-07	Cartridge brass	Bright tin

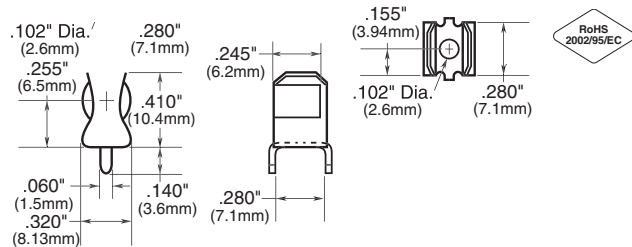


## 1A1907 Series\*\*

PCB Fuseclips with End Stops & Straight Leads

Catalog Numbers	Clip Material*	Finish
1A1907-02	Cartridge brass	None/bright dipped
1A1907-03	Beryllium copper*	Bright tin
1A1907-05	Beryllium copper*	Silver
1A1907-06	Cartridge brass	Bright tin

\*Beryllium copper recommended for amps higher than 15A (1/4" clips).

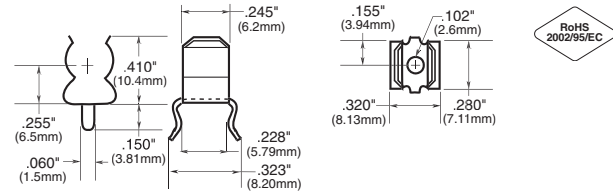


## 1A4533 Series\*\*

PCB Fuseclips without End Stops or Angled Out Leads

Catalog Numbers	Clip Material*	Finish
1A4533-01	Beryllium copper*	Bright tin
1A4533-06	Cartridge brass	Bright tin

\*Beryllium copper recommended for amps higher than 15A (1/4" clips).

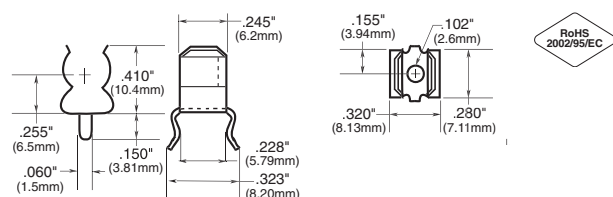


## 1A4534 Series\*\*

PCB Fuseclips with End Stops & Angled Out Leads

Catalog Numbers	Clip Material*	Finish
1A4534-01	Beryllium copper*	Bright tin
1A4534-06	Cartridge brass	Bright tin

\*Beryllium copper recommended for amps higher than 15A (1/4" clips).

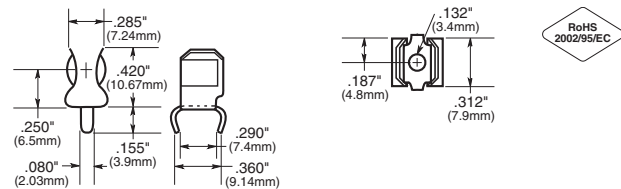


## 1A1119 Series\*\*

Fuseclips with End Stops & Angled In Leads

Catalog Numbers	Clip Material*	Finish
1A1119-04	Beryllium copper*	Bright tin
1A1119-05	Beryllium copper*	Silver
1A1119-10	Cartridge brass	Bright tin

\*Beryllium copper recommended for amps higher than 15A (1/4" clips).

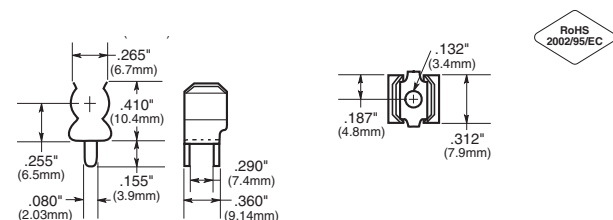


## 1A1120 Series\*\*

PCB Fuseclips without End Stops or Angled In Leads

Catalog Numbers	Clip Material*	Finish
1A1120-02	Cartridge brass	None/bright dipped
1A1120-05	Beryllium copper*	Silver
1A1120-06	Beryllium copper*	Bright tin
1A1120-09	Cartridge brass	Bright tin

\*Beryllium copper recommended for amps higher than 15A (1/4" clips).



\*\*For RoHS compliant version, add "-R" option code suffix to part number.