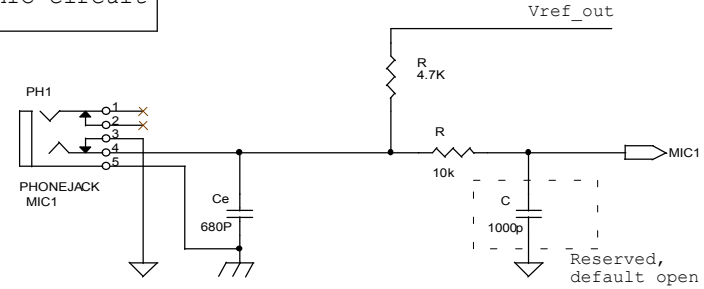
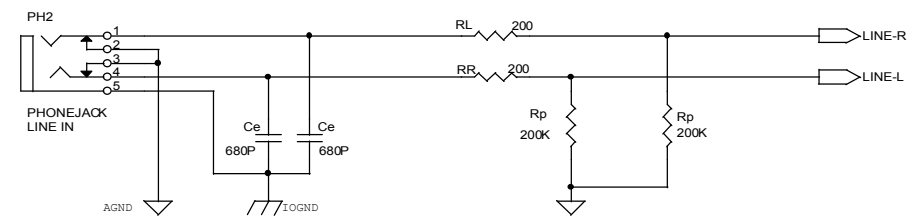


Avance Logic, Inc.			
Title ALC100 circuit			
Size	Document Number	Primary Codec	Rev A
Custom			
Date:	Thursday, May 17, 2001	Sheet	www.DataSheet4U.com

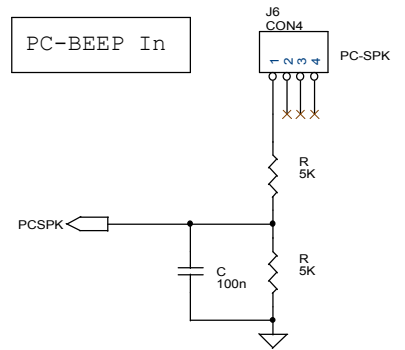
MIC circuit



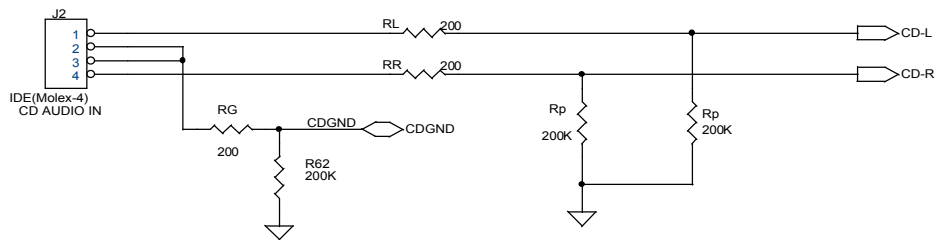
Line-In circuit



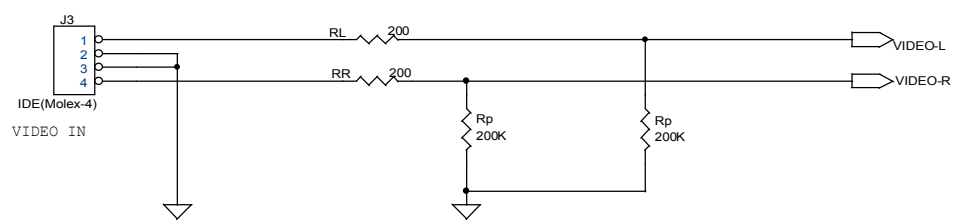
PC-BEEP In



CD-In circuit



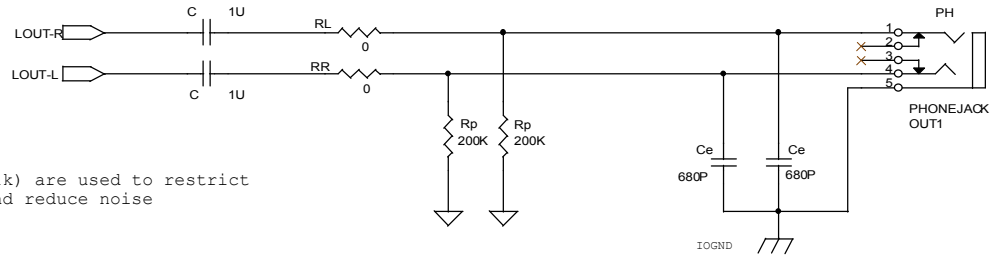
VIDEO, AUX In circuit



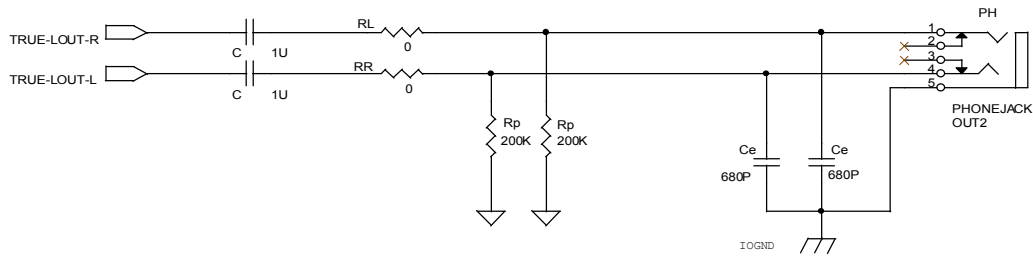
- *Ce capacitor is used for EMI issue
- *RL,RR are used to restrict current, and reduce noise
- *Rp is used for impedance match
- *CDGND treated as input signal, not direct grounded

AVANCE LOGIC/NC.		
Title AC97 input circuits		
Size Custom	Document Number	Rev A
Date: Thursday, May 17, 2001	Sheet	www.DataSheet4U.com

LINE-OUT, TRUE-LINE-OUT



*RL,RR (0~1k) are used to restrict current, and reduce noise



Title			
AC97 output circuit			
Size	Document Number	Sheet	Rev
Custom:Doc>			A
Date:	Thursday, May 17, 2001	Sheet	
		E	