

RJ-45

RJ-45 Connector with CMC

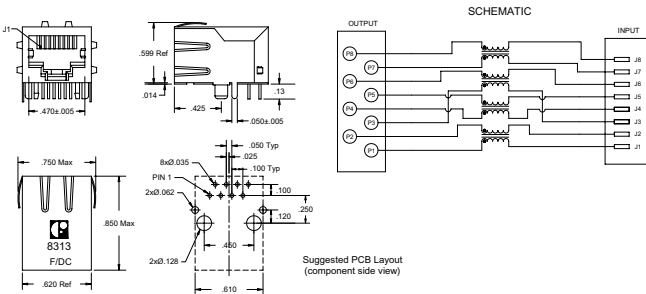
8313



- Same size as RJ-45 connector to save PCB board space
- Designed for reduced EMI radiation
- Operating temperature: 0°C to +70°C
- Storage temperature: +25°C to +125°C
- Operating life: 750 cycles Min.



MECHANICAL AND SCHEMATIC (All dimensions in inches)



UNLESS OTHERWISE SPECIFIED, ALL TOLERANCES ARE ±0.010

ELECTRICAL SPECIFICATION @ 25°C

Part Number	Turns Ratio (±2%)	DCR (Ω Max)	CMA [dB Min (dB Typ)]							Hi-Pot (VAC)
			1 MHz	5 MHz	20 MHz	70 MHz	200 MHz	500 MHz		
8313	1:1	0.5	-5 (-8)	-15 (-17)	-15 (-23)	-20 (-25)	-17 (-22)	-6 (-11)	500	

ISSUE A 31/03/03 8313



229 Colonnade Road, Ottawa, Ontario, Canada K2E 7K3
 Tel: (613) 226-1626 Fax: (613) 226-7124 www.filtran.com