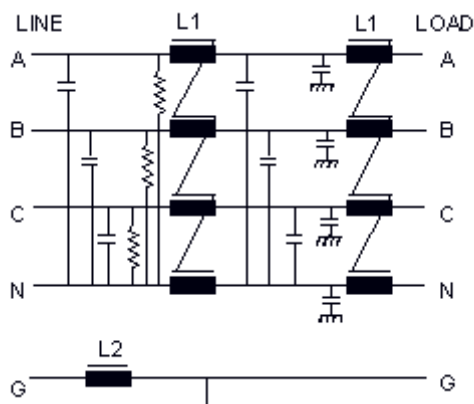


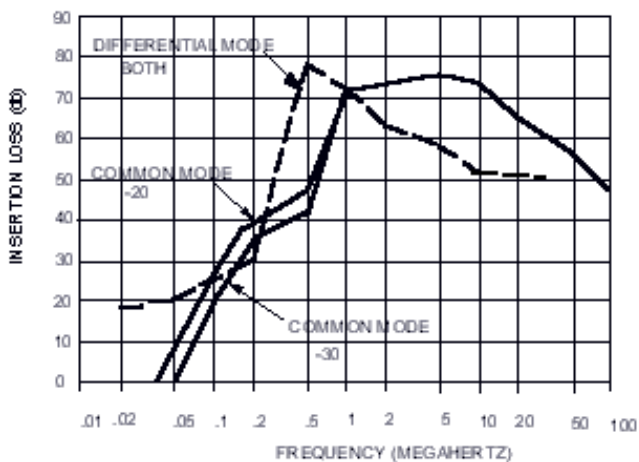
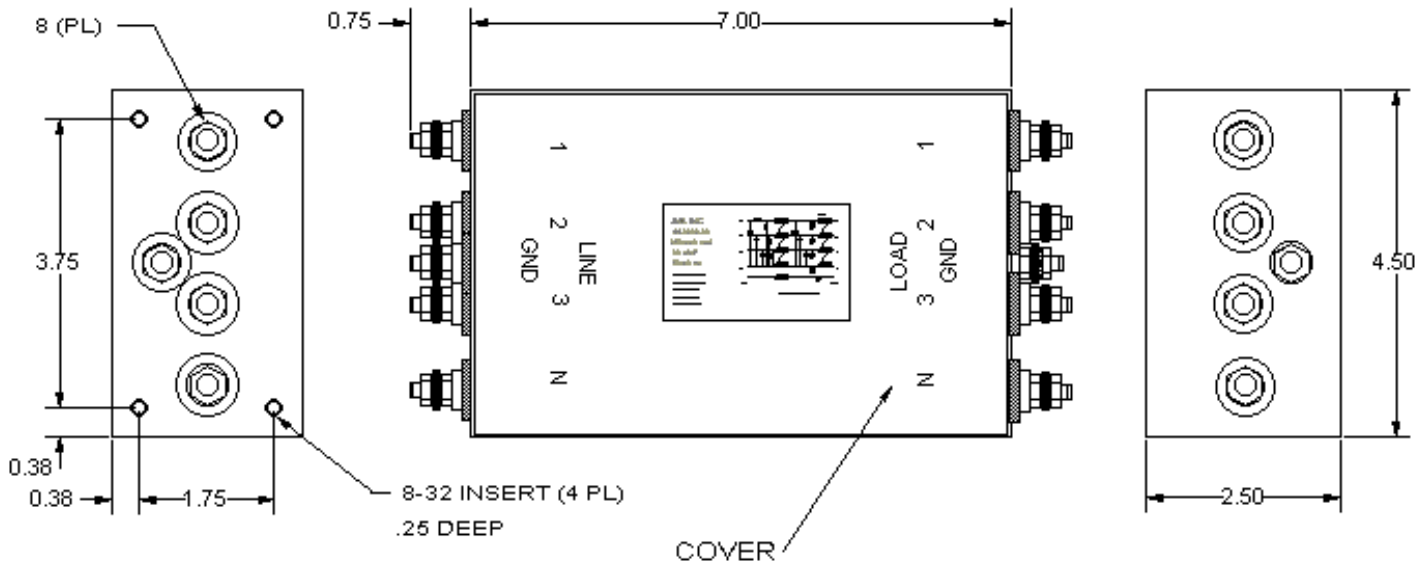


# KK-0902-20-30

Operating Voltage = 250/480 Vac 3 PH Wye  
 Operating Current Max= 20 & 30 amps  
 Operating Frequency = 50 - 60Hz  
 Operating Temperature = -20 to +50oC  
 Dielectric Withstand ( L to Case)= 1500V~for 1 Min.  
 Dielectric Withstand ( L to L )= 1500Vdc for 1 Min.  
 Leakage current @ 250V~50Hz= 1.8 mA  
 Max Residual Voltage after 5 secs = 34 Volts Max  
 Agency Approvals = UL ( Pending )  
 Ordering Information:  
 20 Amps 10-32 Threaded Terminals KK-0902-20  
 30 Amps 10-32 Threaded Terminals KK-0902-30



10-32UNF TERM



The 902 filter is a three phase filter designed to operate with computers, motors, power distribution systems or any system using three phase power. This filter is designed to be used on 3 phase wye power systems but can be used in a delta configuration by not connecting to the neutral (N) terminal of the filter. The ground coil is designed to eliminate ground loops caused by inter-system connections.

The package features threaded studs for mounting in a "through bulkhead" manner providing the ultimate in RF noise suppression. The filter can also be purchased without the ground coil for use with stand alone systems.