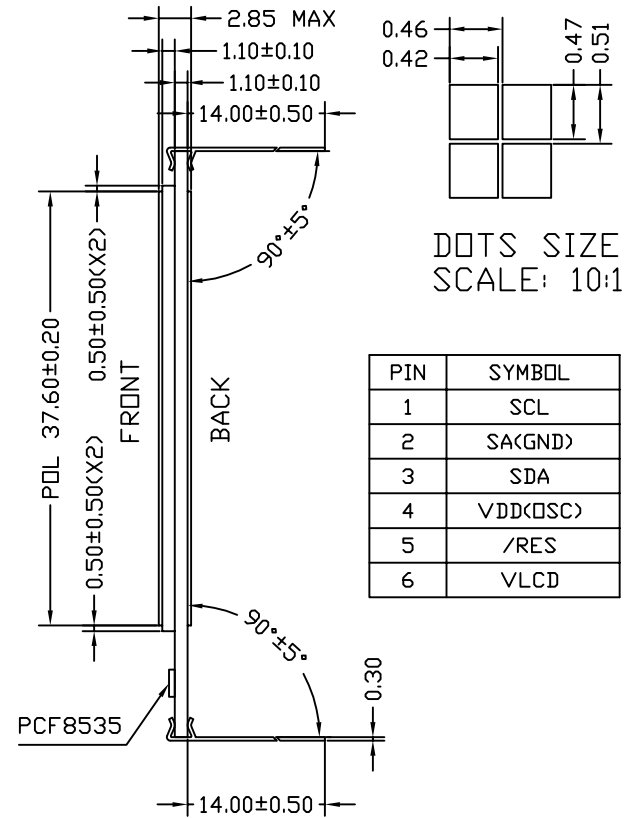
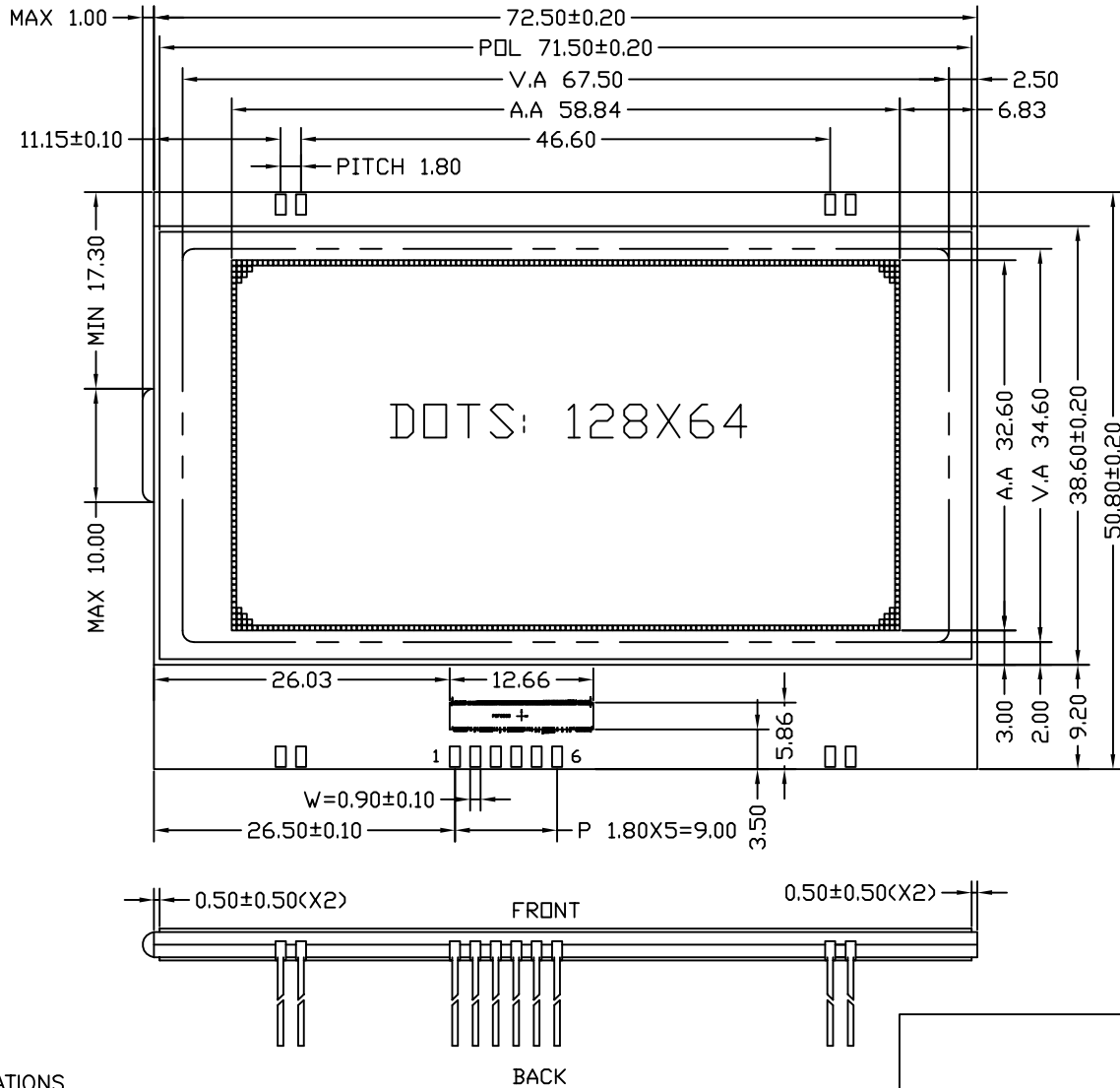


www.DataSheet4U.com
 VIEWING DIRECTION

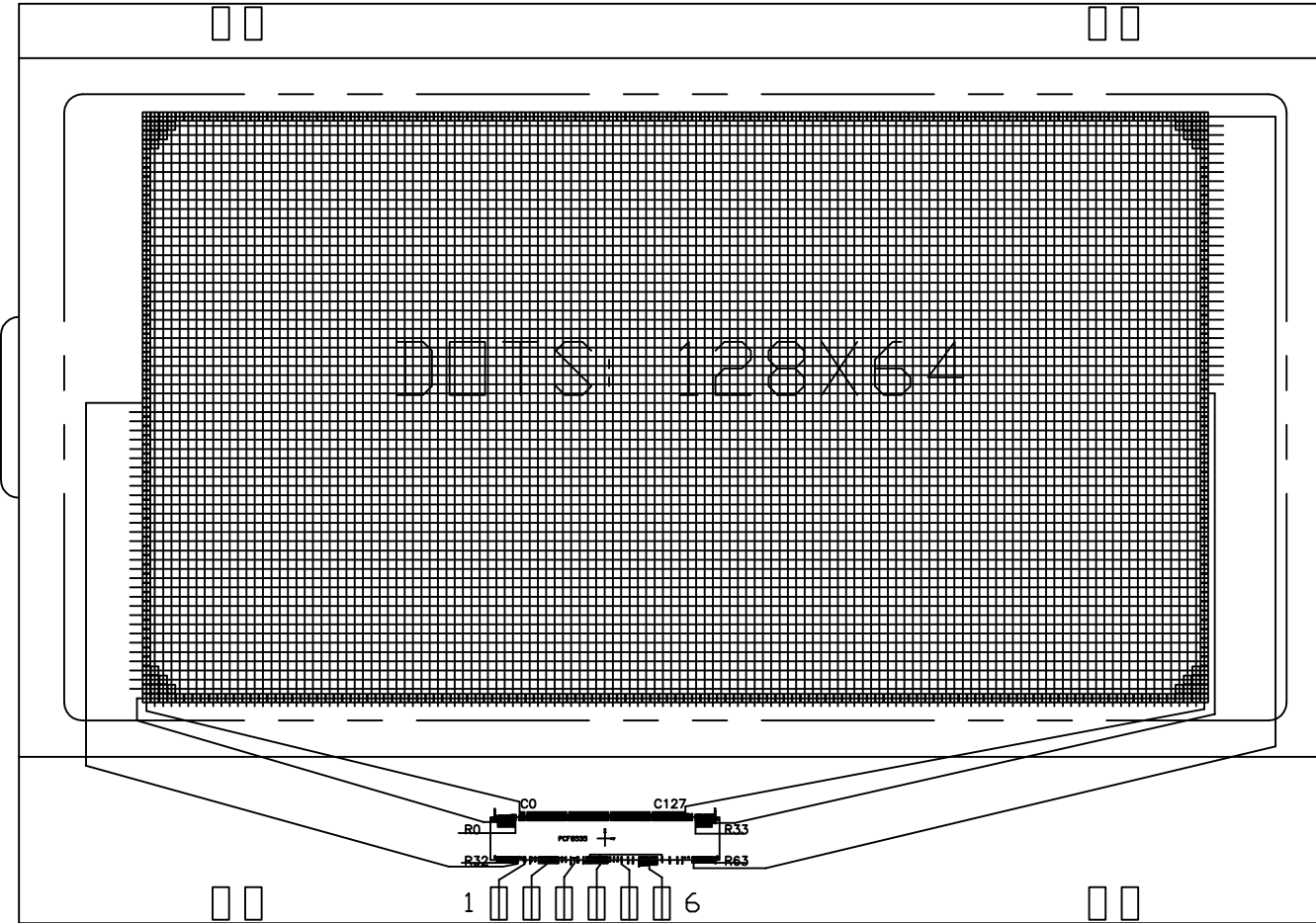


PIN	SYMBOL
1	SCL
2	SA<GND>
3	SDA
4	VDD<OSC>
5	/RES
6	VLCD

SPECIFICATIONS

DISPLAY MODE : FSTN , POSITIVE MODE
 DRIVE CONDITION : 1/65 DUTY , 1/9 BIAS
 VIEWING DIRECTION : 11 O'CLOCK
 OPERATING TEMP : -30°C TO +60°C
 STORAGE TEMP : -35°C TO +70°C
 OPERATING VOLTAGE: 9.0 V
 FRONT POLARIZER : TRANSMISSIVE,ADHESIVE(□□)
 BACK POLARIZER : TRANSFLECTIVE,ADHESIVE
 CUSTOMER NO.:
 CONNECTORS : PIN <IC:PCF8535>

GENERAL TOL ALL UNITS: 0.20 mm	DATE 27/12	MODEL NUMBER : G77E0		SHEET: 1 OF 5
DWN: YIN	CHK:	DO NOT SCALE THIS DRAWING.		PROJECTION
APP:				

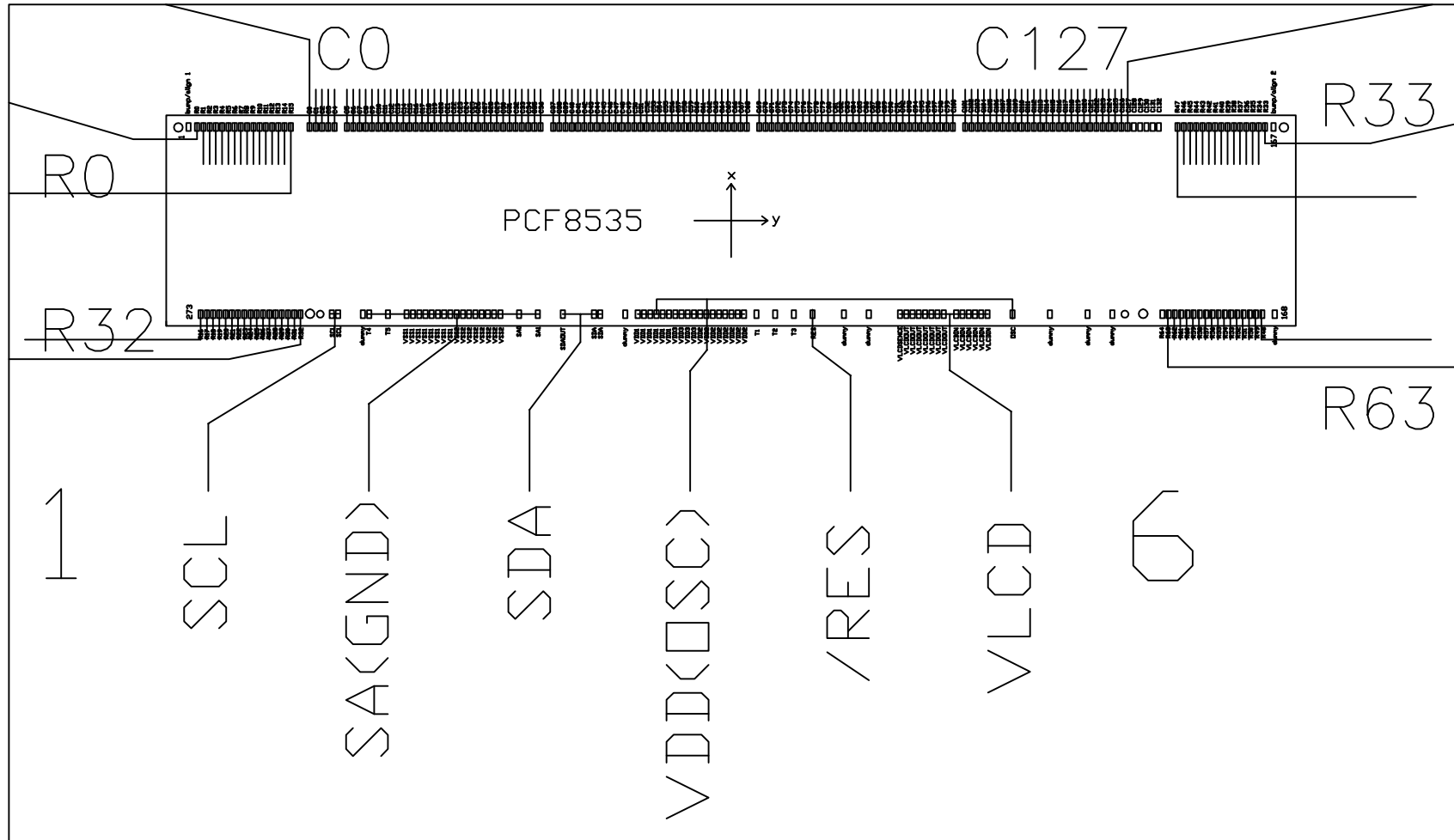


SEG ———
 COM ———

1 SCL
 2 SAK(GND)
 3 SDA
 4 VDD(O5C)
 5 /RES
 6 VLCD

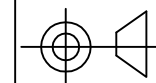
GENERAL TOL		ALL UNITS:	DATE	MODEL NUMBER :		SHEET: 2 OF 5
0.20		mm				
DWN:		YIN				DATE:
CHK:						27-12-2006
APP:				DO NOT SCALE THIS DRAWING.	PROJECTION	

www.DataSheet4U.com



GENERAL TOL	ALL UNITS:	DATE
0.20	mm	27/12
DWN:	YIN	
CHK:		
APP:		

MODEL NUMBER :
G77E0



PROJECTION

SHEET: 3 OF 5
DATE:
27-12-2006

www.DataSheet4U.com