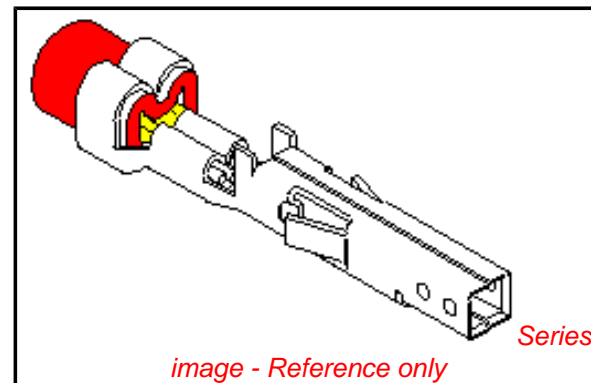


PLEASE CHECK WWW.MOLEX.COM FOR LATEST PART INFORMATION

Part Number: **0039000213**
Status: **Active**
Overview: [minifit_jr](#)
Description: 4.20mm (.165") Pitch Mini-Fit™ Crimp Terminal, Female, Phosphor Bronze, Tin (Sn), 18-24 AWG, Reel

Documents:

| | |
|---|---|
| Test Summary (PDF) | Product Specification PS-5556-002 (PDF) |
| Drawing (PDF) | Product Specification PS-5556-003 (PDF) |
| Product Specification PS-5556-001 (PDF) | RoHS Certificate of Compliance (PDF) |



General

| | |
|-------------------------|----------------------------|
| Product Family | Crimp Terminals |
| Series | 5556 |
| Crimp Quality Equipment | Yes |
| Overview | minifit_jr |
| Product Name | Mini-Fit® |

Physical

| | |
|--------------------------------|--------------------------|
| Durability (mating cycles max) | 30 |
| Gender | Female |
| Material - Metal | Phosphor Bronze |
| Material - Plating Mating | Tin |
| Material - Plating Termination | Nickel |
| Packaging Type | Reel |
| Plating min: Mating (µin) | 100 |
| Plating min: Mating (µm) | 2.54 |
| Plating min: Termination (µin) | 50 |
| Plating min: Termination (µm) | 1.27 |
| Termination Interface: Style | Crimp or Compression |
| Wire Insulation Diameter | 1.30-3.10mm (.051-.122") |
| Wire Size AWG | 18, 20, 22, 24 |
| Wire Size mm² | N/A |

Electrical

| | |
|-------------------------------|------|
| Current - Maximum per Contact | 9A |
| Voltage - Maximum | 600V |

Material Info

| | |
|-----------------|-----------|
| Old Part Number | 5556-PBSP |
|-----------------|-----------|

Reference - Drawing Numbers

| | |
|-------------------------|---------------------------------------|
| Packaging Specification | PK-5556-001 |
| Product Specification | PS-5556-001, PS-5556-002, PS-5556-003 |
| Test Summary | TS-5556-002 |

| | |
|---|--|
| EU RoHS ELV and RoHS Compliant REACH SVHC Contains SVHC: No Halogen-Free Status Halogen-Free | China RoHS  |
|---|--|

Need more information on product environmental compliance?

Email productcompliance@molex.com
 For a multiple part number RoHS Certificate of Compliance, [click here](#)

Please visit the [Contact Us](#) section for any non-product compliance questions.

Search Parts in this Series

5556Series

Mates With

5558 Male Crimp Terminals, Mini-Fit Jr.™ Header, Dual Row, 5566 , 5569

Use With

5557 Mini-Fit Jr.™ Receptacle Housing, 30067 TPA, 42474 BMI Panel Mount, 5559 Mini-Fit Jr.™ Plug Housing, Dual Row

Application Tooling | FAQ

Tooling specifications and manuals are found by selecting the products below. Crimp Height Specifications are then contained in the Application Tooling Specification document.

Global

| Description | Product # |
|--|------------|
| FineAdjust™ Applicator for Mini-Fit Jr.™, Mini-Fit HCS™ Crimp Terminals, | 0639015600 |

| | |
|-------------------------------------|-------------------|
| 18-24 AWG and smaller insulation | |
| T2 Terminator Die | <u>0639102600</u> |
| FineAdjust™ | <u>0639002600</u> |
| Applicator | |
| FineAdjust™ | <u>0639002900</u> |
| Applicator, Small | |
| Insulation | |
| T2 Terminator | <u>0639102900</u> |
| Tooling Die | |
| Extraction Tool | <u>0011030044</u> |
| Hand Crimp Tool for | <u>0638190900</u> |
| Mini-Fit™ Jr. Male | |
| and Female Crimp | |
| Terminals, 16-24 | |
| AWG | |

This document was generated on 06/01/2010

PLEASE CHECK WWW.MOLEX.COM FOR LATEST PART INFORMATION

| PART NO. | ENG. NO. | MAT'L. | PLATE | WIRE GAGE | QUANTITY PER REEL | DIM. "B" | DIM. "C" | DIM. "D" | DIM. "E" | DIM. "F" | DIM. "G" | |
|------------|-------------|--------|-------|-----------|-------------------|--------------------------|--------------------------|----------------|--------------------------|--------------------------|----------------|--|
| 39-00-0207 | 5556-SP | A | A | 18-24 GA. | 4,000 | .142±.012 (3.60±0.30) | .177±.016 (4.50±0.40) | .035 (0.90) | .075±.012 (1.90±0.30) | .091±.016 (2.40±0.40) | .020 (0.50) | |
| 39-00-0208 | 5556-SPL | | | 22-28 GA. | 6,000 | .091±.012 (2.30±0.30) | .091±.016 (2.30±0.40) | .024 (0.60) | .071±.012 (1.80±0.30) | .065±.016 (1.65±0.40) | .016 (0.40) | |
| 39-00-0209 | 5556-S2P | | | 16 GA. | 4,000 | .142±.012 (3.60±0.30) | .177±.016 (4.50±0.30) | .035 (0.90) | .091±.012 (2.30±0.30) | .106±.016 (2.70±0.40) | .024 (0.60) | |
| 39-00-0210 | 5556-S2PL | | | | | | | | | | | |
| 39-00-0211 | 5556-S3P | | | | | | | | | | | |
| 39-00-0212 | 5556-S3PL | | | | | | | | | | | |
| NOT TOOLED | 5556-S5P | B | A | 28-30 GA. | 6,000 | .091±.012 (2.30±0.30) | .091±.016 (2.30±0.40) | .024 (.60) | .050±.010 (1.27±0.25) | .044±.010 (1.12±0.25) | .010 (0.25) | |
| NOT TOOLED | 5556-S5PL | | | 18-24 GA. | 4,000 | .142±.012 (3.60±0.30) | .177±.016 (4.50±0.40) | .035 (0.90) | .075±.012 (1.90±0.30) | .091±.016 (2.40±0.40) | .020 (0.50) | |
| 39-00-0213 | 5556-PBSP | | | 22-28 GA. | 6,000 | .091±.012 (2.30±0.30) | .091±.016 (2.30±0.40) | .024 (0.60) | .071±.012 (1.80±0.30) | .065±.016 (1.65±0.40) | .016 (0.40) | |
| 39-00-0214 | 5556-PBSPL | | | 16 GA. | 4,000 | .142±.012 (3.60±0.30) | .177±.016 (4.50±0.30) | .035 (0.90) | .091±.012 (2.30±0.30) | .106±.016 (2.70±0.40) | .024 (0.60) | |
| 39-00-0215 | 5556-PBS2P | | | | | | | | | | | |
| 39-00-0216 | 5556-PBS2PL | | | | | | | | | | | |
| 39-00-0217 | 5556-PBS3P | | | | | | | | | | | |
| 39-00-0218 | 5556-PBS3PL | | | | | | | | | | | |
| NOT TOOLED | 5556-PBS5P | | | 28-30 GA. | 6,000 | .091±.012 (2.30±0.30) | .091±.016 (2.30±0.40) | .024 (.60) | .050±.010 (1.27±0.25) | .044±.010 (1.12±0.25) | .010 (0.25) | |
| NOT TOOLED | 5556-PBS5PL | | | | | | | | | | | |

LEGEND:

5556 - ** S * P *

BASE NO. _____

MATERIAL _____

BLANK= BRASS

PB= PHOS. BRONZE

S= TIN OVER NICKEL

PLATING & CRIMP SIZE COMB. _____

BLANK THRU 5

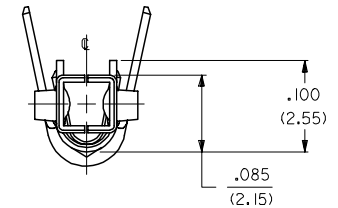
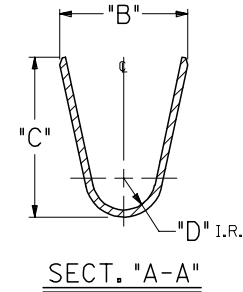
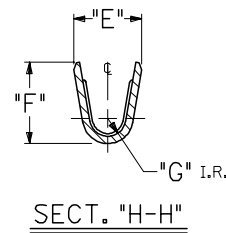
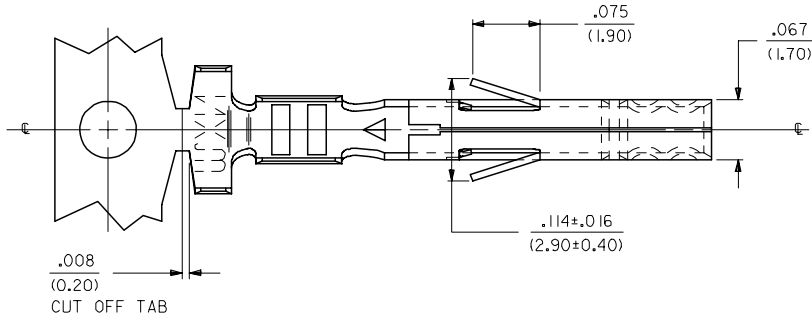
CHAIN OR LOOSE _____

BLANK= CHAIN

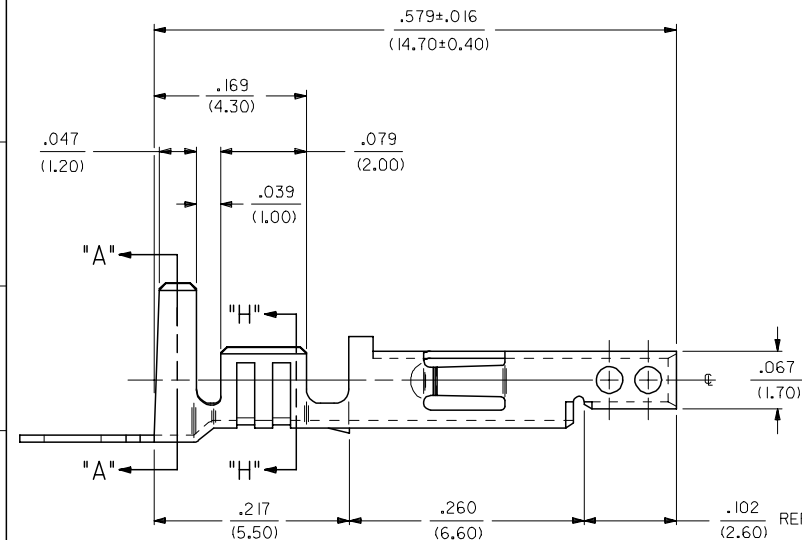
L= LOOSE

NOTES:

- PART DESIGNED IN METRIC.
- TERMINAL FOR USE WITH 5557, 42474, 43760 AND 30067 SERIES HOUSINGS.
- MATES WITH 5558, 5566 AND 5569 SERIES CONNECTORS.
- REFER TO DWG. NO. CS-5556*/5558* FOR CRIMP SPECIFICATIONS.
- MATERIAL:
 - A= BRASS, CDA 260
 - B= PHOS. BRONZE, CDA 510
- PLATING:
 - A= .000100/(.00254) MIN. BRIGHT TIN OVER .000050/(.00127) MIN. NICKEL.
- PRODUCT SPECIFICATION: PS-5556-001, PS-5556-002, PS-5556-003



RoHS COMPLIANT



| REMOVED 14 GA. FC NO: UCP2005-2552 DRW:NDUNNE 2005/06/01 CHKD:GOLGAR 2005/06/01 APPR: YMARGULL 2005/06/03 | QUALITY SYMBOLS | GENERAL TOLERANCES (UNLESS SPECIFIED) | DIMENSION STYLE IN/MM | SCALE 10:1 | DESIGN UNITS INCH | THIRD ANGLE PROJECTION | | | | | | | | | | | | | | |
|---|--|---|--------------------------|------------|-------------------|------------------------|-------|--------|----------|-------|--------|----------|-------|--------|---------|-------|--------|--------------------------------|---|--------------------------|
| | DESCRIPTION | <table border="1"> <tr> <th>PLACES</th> <th>mm</th> <th>INCH</th> </tr> <tr> <td>4 PLACES</td> <td>± .10</td> <td>± .004</td> </tr> <tr> <td>3 PLACES</td> <td>± .15</td> <td>± .006</td> </tr> <tr> <td>2 PLACES</td> <td>± .25</td> <td>± .010</td> </tr> <tr> <td>1 PLACE</td> <td>± .36</td> <td>± .014</td> </tr> </table> | PLACES | mm | INCH | 4 PLACES | ± .10 | ± .004 | 3 PLACES | ± .15 | ± .006 | 2 PLACES | ± .25 | ± .010 | 1 PLACE | ± .36 | ± .014 | DRAWN BY DATE GEP 5/17/1990 | TITLE MINI FIT JR TERMINAL FEMALE, CRIMP, TIN/NICKLE | MATERIAL NO. SD-5556-SP* |
| PLACES | mm | INCH | | | | | | | | | | | | | | | | | | |
| 4 PLACES | ± .10 | ± .004 | | | | | | | | | | | | | | | | | | |
| 3 PLACES | ± .15 | ± .006 | | | | | | | | | | | | | | | | | | |
| 2 PLACES | ± .25 | ± .010 | | | | | | | | | | | | | | | | | | |
| 1 PLACE | ± .36 | ± .014 | | | | | | | | | | | | | | | | | | |
| REV | DRAFT WHERE APPLICABLE MUST REMAIN WITHIN DIMENSIONS | APPROVED BY DATE RAS 5/17/1990 | MATERIAL NO. SD-5556-SP* | | SHEET NO. 1 OF 1 | | | | | | | | | | | | | | | |
| THIS DRAWING CONTAINS INFORMATION THAT IS PROPRIETARY TO MOLEX INCORPORATED AND SHOULD NOT BE USED WITHOUT WRITTEN PERMISSION | | | | | | | | | | | | | | | | | | | | |