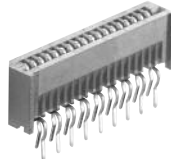
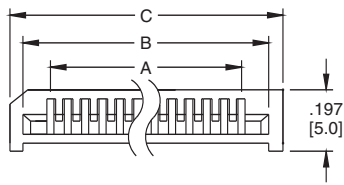
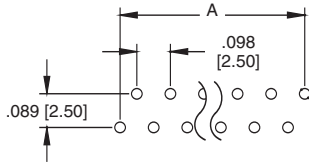
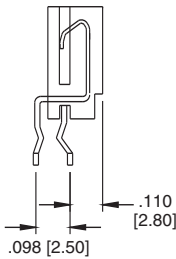
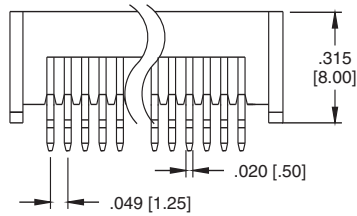


### PCB-B

.049"(1.25) TOP ENTRY THRU HOLE



PCB-B-18-T-25

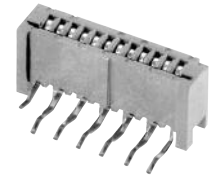
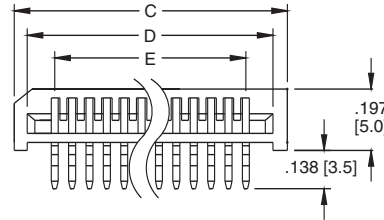


A = .049 [1.25] X No. of Spaces  
 B = A + .098 [2.50]  
 C = A + .197 [5.00]

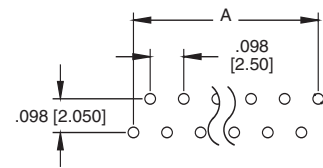
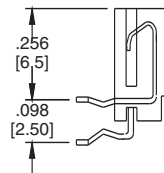
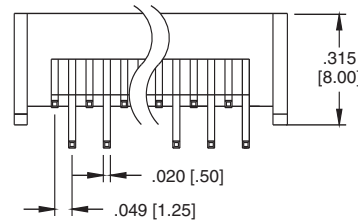
Recommended PCB Layout

### PCB-B

.049"(1.25) SIDE ENTRY THRU HOLE



PCB-B-12-SA-25



A = .049 [1.25] X No. of Spaces  
 B = A + .098 [2.50]  
 C = A + .197 [5.00]

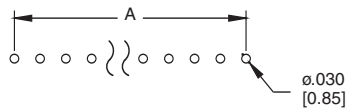
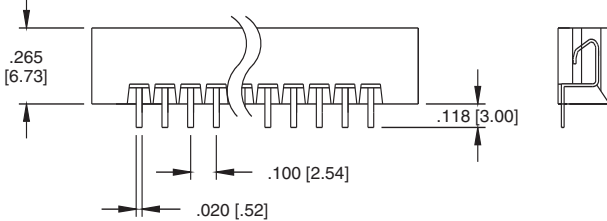
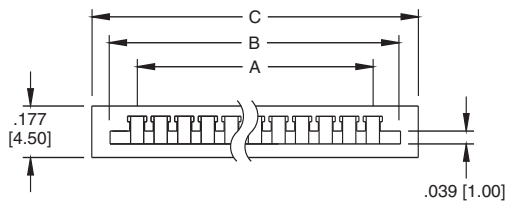
Recommended PCB Layout

### PCB-A

.100"(2.54) TOP ENTRY INLINE THRU HOLE



PCB-A-10-T



A = .100 [2.54] x no. of Spaces  
 B = A + .232 [5.90]  
 C = A + .315 [8.00]

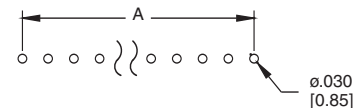
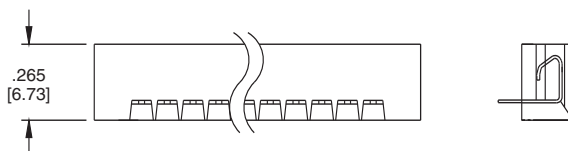
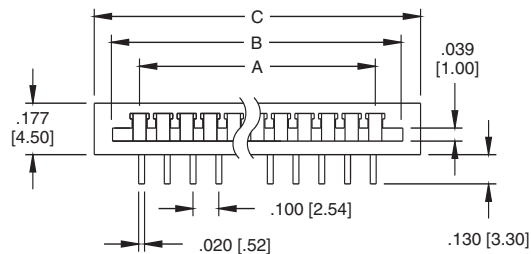
Recommended PCB Layout

### PCB-A

.100"(2.54) SIDE ENTRY INLINE THRU HOLE



PCB-A-13-SA



A = .100 [2.54] x no. of Spaces  
 B = A + .232 [5.90]  
 C = A + .315 [8.00]

Recommended PCB Layout