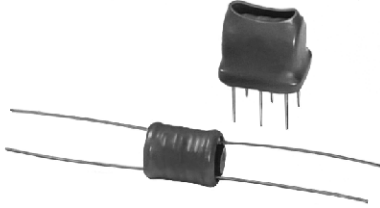


## Transformers Pulse, Trigger Type



### FEATURES

- Choice of printed circuit or bobbin-type configurations.
- Designed to transfer high amplitude or long duration pulses without saturation.
- Designed for low-cost trigger source isolation in half and full wave SCR power control circuits, including motor speed controls, heater controls and incandescent lighting controls.



**RoHS**  
COMPLIANT

| STANDARD ELECTRICAL SPECIFICATIONS |              |        |                                 |                                 |                                    |                    |                      |
|------------------------------------|--------------|--------|---------------------------------|---------------------------------|------------------------------------|--------------------|----------------------|
| DASH NUMBER                        | TURNS RATIO  | FIGURE | PRIMARY INDUCTANCE MINIMUM (μH) | LEAKAGE INDUCTANCE MAXIMUM (μH) | INTERWINDING CAPACITY MAXIMUM (pF) | DCR MAXIMUM (Ohms) | UNIPOLAR ET (V-μSEC) |
| 101*                               | 1:1 ± 10 %   | 1/3    | 200                             | 3                               | 800                                | 1.5-1.5            | 570                  |
| 102*                               | 1:1 ± 10 %   | 1/3    | 500                             | 6                               | 1500                               | 4.5-4.5            | 912                  |
| 103*                               | 1:1 ± 10 %   | 1/3    | 1000                            | 12                              | 2000                               | 8-8                | 1283                 |
| 104                                | 1:1 ± 10 %   | 1/3    | 2000                            | 13                              | 2800                               | 12-12              | 1853                 |
| 105                                | 1:1 ± 10 %   | 1/3    | 5000                            | 15                              | 3500                               | 18-18              | 2850                 |
| 106*                               | 1:1:1 ± 10 % | 2/4    | 200                             | 3                               | 800                                | 2-2-2              | 570                  |
| 107                                | 1:1:1 ± 10 % | 2/4    | 500                             | 6                               | 1500                               | 6-6-6              | 912                  |
| 108                                | 1:1:1 ± 10 % | 2/4    | 1000                            | 12                              | 2000                               | 10-10-10           | 1283                 |
| 109                                | 1:1:1 ± 10 % | 2/4    | 2000*                           | 13                              | 2800                               | 15-15-15           | 1853                 |
| 110                                | 1:1:1 ± 10 % | 2/4    | 5000                            | 15                              | 3500                               | 27-27-27           | 2850                 |
| 111*                               | 2:1 ± 10 %   | 1/3    | 500                             | 6                               | 1000                               | 4-2                | 912                  |
| 112*                               | 2:1 ± 10 %   | 1/3    | 1000                            | 10                              | 1300                               | 10-2               | 1288                 |
| 113                                | 2:1 ± 10 %   | 1/3    | 2000                            | 12                              | 1800                               | 10-5               | 1881                 |
| 114                                | 2:1 ± 10 %   | 1/3    | 5000                            | 15                              | 2400                               | 18-10              | 2850                 |
| 115*                               | 2:1:1 ± 10 % | 2/4    | 200                             | 8                               | 700                                | 4-2-2              | 570                  |
| 116*                               | 2:1:1 ± 10 % | 2/4    | 500                             | 11                              | 1000                               | 6-2-2              | 912                  |
| 117*                               | 2:1:1 ± 10 % | 2/4    | 1000                            | 15                              | 1300                               | 5-2-2              | 1311                 |
| 118                                | 2:1:1 ± 10 % | 2/4    | 2000                            | 60                              | 2000                               | 10-5-5             | 1881                 |
| 119                                | 2:1:1 ± 10 % | 2/4    | 5000                            | 75                              | 2100                               | 20-10-10           | 2850                 |
| 120*                               | 5:1 ± 10 %   | 1/3    | 5000                            | 1500                            | 400                                | 19-3               | 2850                 |
| 121                                | 5:1:1 ± 10 % | 2/4    | 5000                            | 1500                            | 400                                | 20-4-4             | 2850                 |

\*Standard items in PT-10 Model. Other Dash Numbers available on request. All Dash Numbers standard in PT-20 Model.

### ELECTRICAL SPECIFICATIONS

**Primary Inductance Values:** From 200 μH to 5000 μH

**Turns Ratio:** 1:1, 1:1:1, 2:1, 2:1:1 and 5:1

**Temperature Range:** - 10 °C to + 70 °C

**Dielectric Test at 60 Hz:** 1600 V RMS (Windings to case)

**AC Line Voltage at 60 Hz:** 240 V RMS maximum in test circuits shown

### MATERIAL SPECIFICATIONS

**Bobbin:** Nylon

**Leads:** Tinned, solderable

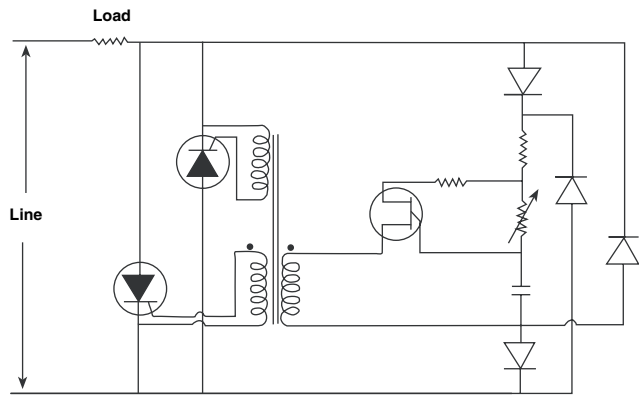
PT-10 = Polyurethane insulated magnet wire for clip or bracket mounting

PT-20 = Tinned copper 0.025 [0.635]Sq. for printed circuit mounting

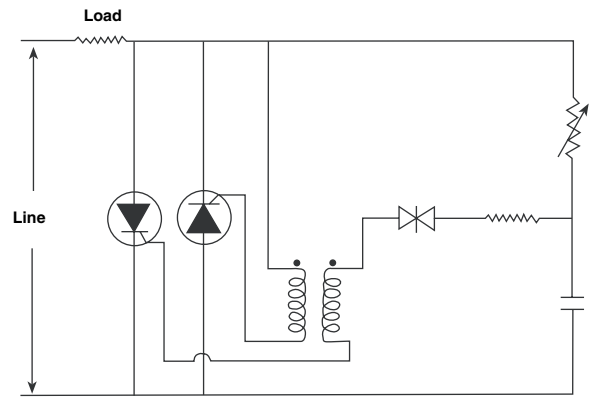
**Header:** Thermoset plastic

**Covering:** Thermoplastic

## CIRCUIT DIAGRAMS



Transformer Coupled Unijunction Transistor Triggering Circuit



Transformer Coupled Breakdown Diode Triggering Circuit

## DIMENSIONS in inches (millimeters)

### PT-10

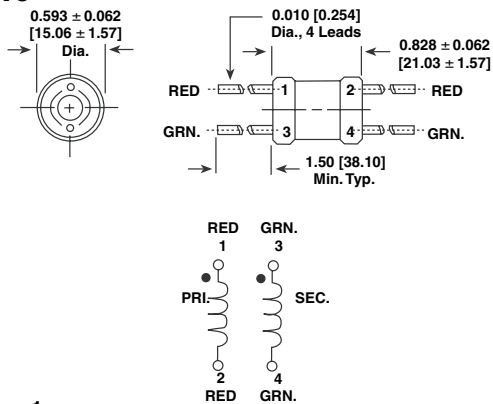


Figure 1

### PT-10

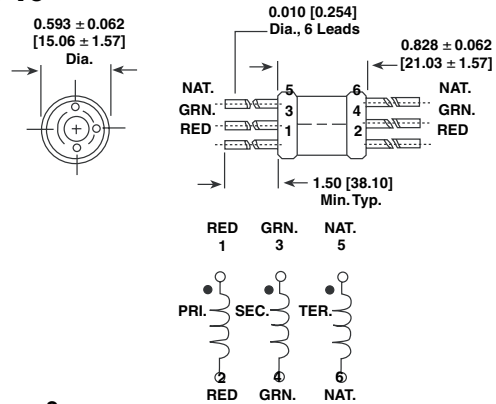


Figure 2

### PT-20

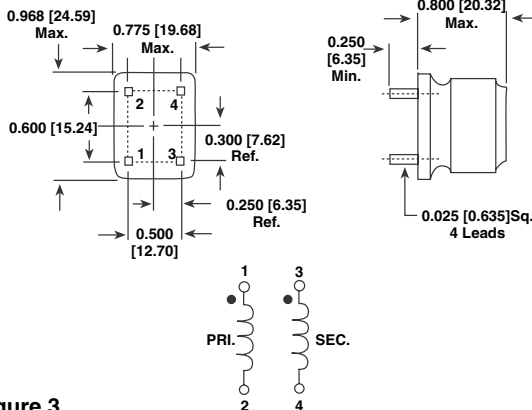


Figure 3

### PT-20

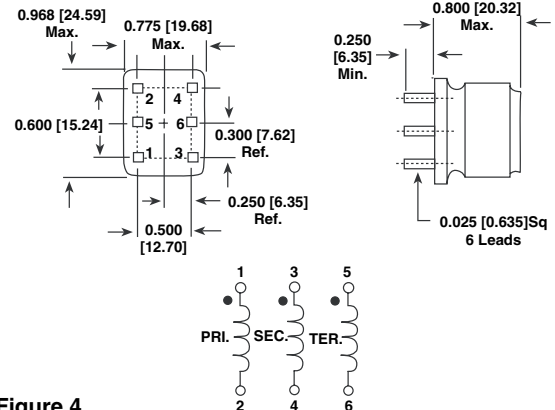


Figure 4

## PART MARKING

- Vishay Dale
- Model
- Style
- Dash number



## ORDERING INFORMATION

PT  
MODEL

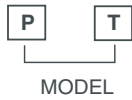
10  
STYLE

101  
DASH NUMBER

EB  
PACKAGE CODE

e2  
JEDEC LEAD (Pb)-FREE  
STANDARD

## GLOBAL PART NUMBER





## Disclaimer

All product specifications and data are subject to change without notice.

Vishay Intertechnology, Inc., its affiliates, agents, and employees, and all persons acting on its or their behalf (collectively, "Vishay"), disclaim any and all liability for any errors, inaccuracies or incompleteness contained herein or in any other disclosure relating to any product.

Vishay disclaims any and all liability arising out of the use or application of any product described herein or of any information provided herein to the maximum extent permitted by law. The product specifications do not expand or otherwise modify Vishay's terms and conditions of purchase, including but not limited to the warranty expressed therein, which apply to these products.

No license, express or implied, by estoppel or otherwise, to any intellectual property rights is granted by this document or by any conduct of Vishay.

The products shown herein are not designed for use in medical, life-saving, or life-sustaining applications unless otherwise expressly indicated. Customers using or selling Vishay products not expressly indicated for use in such applications do so entirely at their own risk and agree to fully indemnify Vishay for any damages arising or resulting from such use or sale. Please contact authorized Vishay personnel to obtain written terms and conditions regarding products designed for such applications.

Product names and markings noted herein may be trademarks of their respective owners.