

- Microphones
- Test Instruments
- Mixers
- D/C Converters
- Amplifiers
- TV Cameras
- Speakers
- VCRs
- Medical Instruments
- Tuners
- Equalizers

**Standard Data**

● **Specifications (Detail p4)**

Rated Current	5A-15A
Service Voltage	133VAC
Dielectric Withstanding Voltage	1400VAC
Insulation Resistance	5000M $\Omega$ min at 500VDC
Contact Resistance	2A, 3, 4 : 5m $\Omega$ MAX 5, 6, 6A, 7 : 10m $\Omega$ MAX

● **Materials (Finishes)**

Contacts	Copper Alloy/Silver (Gold contacts available)
Insulator	Soaker : Chloroprene Pin : Nylon
Shell	Aluminum Alloy (Satin Nickel)
Barrel	Steel
Bushing	Chloroprene

**How To Order**

**XLR-3-11C-\***

● Series Prefix -----

● Contact Arrangements -----

2A, 3, 4, 5, 6, 6A, 7 (SEE PAGE 4)

● Shell Styles -----

- 11C — Female Plug
- 12C — Male Plug
- 13 — Female Round Flange Receptacle
- 14 — Male Round Flange Receptacle
- 31 — Female Flange Receptacle
- 32 — Male Flange Receptacle

● Modifications -----

- F77 — Rectangular Small Flange (Receptacle 31 and 32)
- F512 — Rectangular Mini-Flange (Receptacle 32 only)
- A176 — Gold Plated Contacts

**\* Black shell available. Contact Factory**

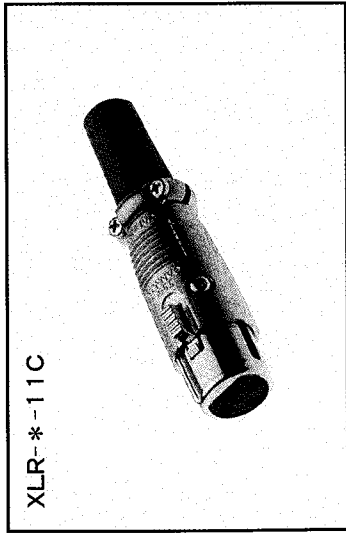
**ITT Cannon**

Dimensions are shown in millimeters (inches).  
Dimensions subject to change.

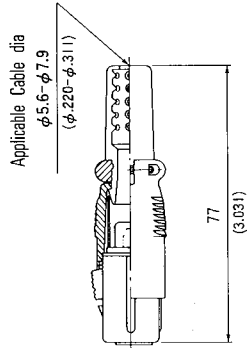
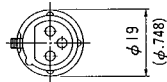
# XLR

## Plugs

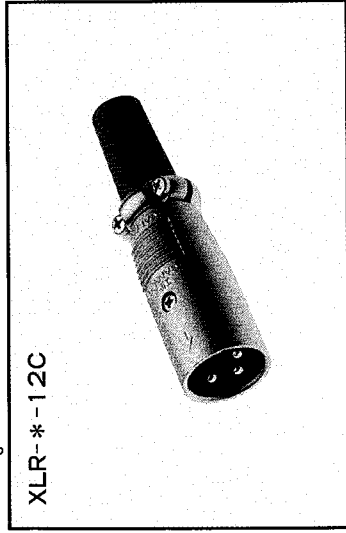
Female Plug



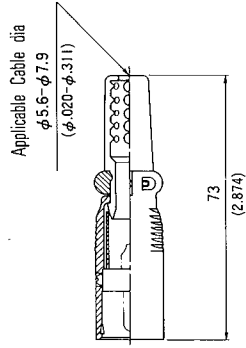
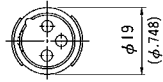
XLR- \*-11C



Male Plug

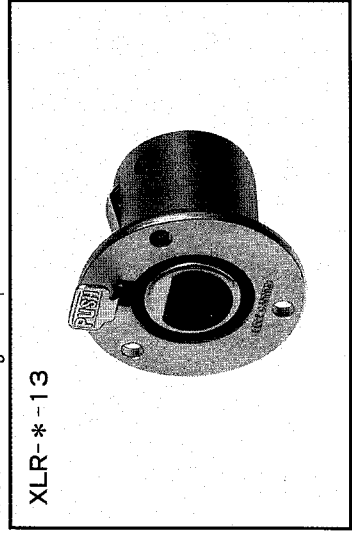


XLR- \*-12C

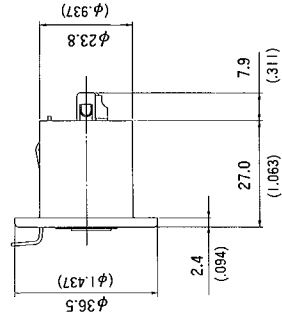
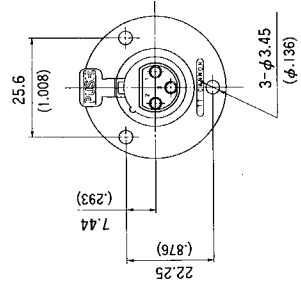


## Receptacles

Female Round Flange Receptacles



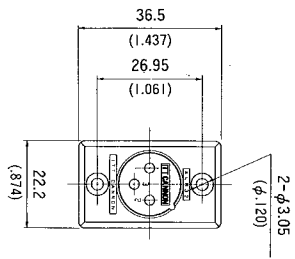
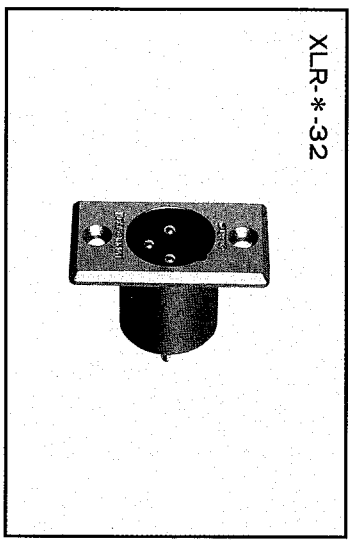
XLR- \*-13



Male Round Flange Receptacles

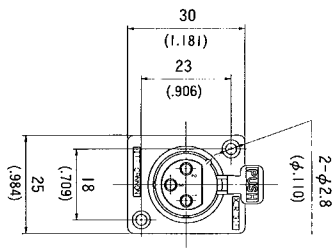
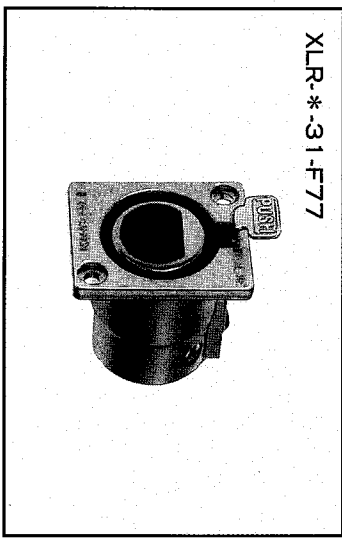
Male Flange Receptacle

XLR-\* -32



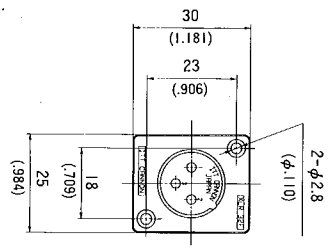
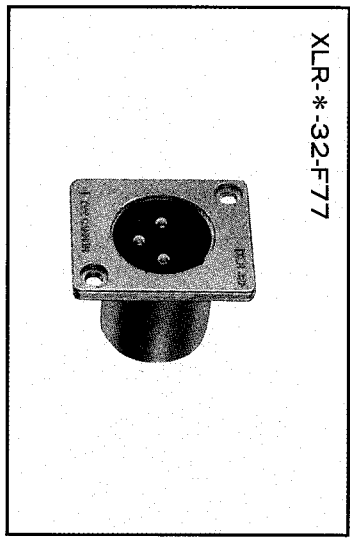
Small Female Flange Receptacle

XLR-\* -31-F77



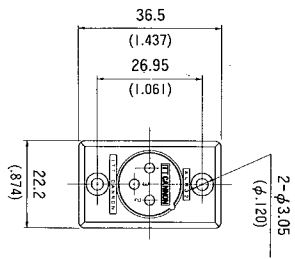
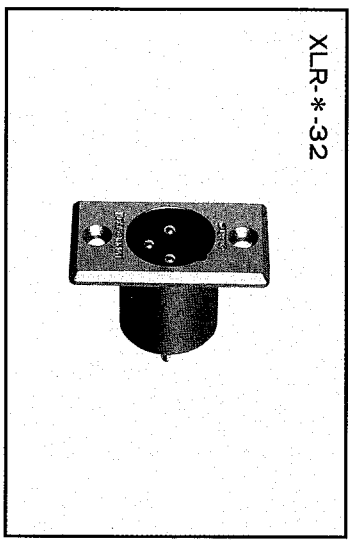
Small Male Flange Receptacle

XLR-\* -32-F77



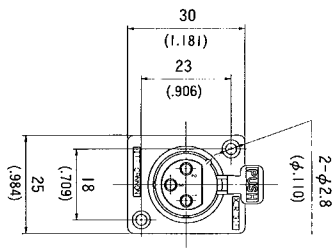
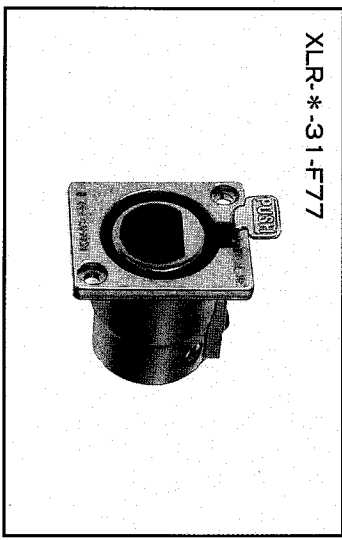
Male Flange Receptacle

XLR- \*-32



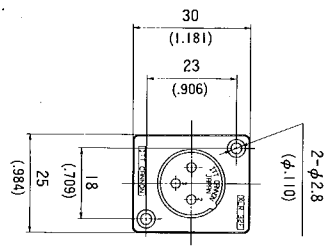
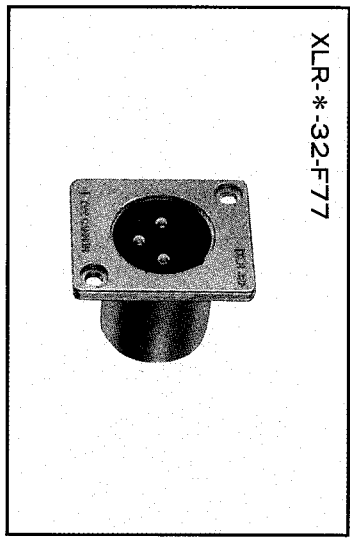
Small Female Flange Receptacle

XLR- \*-31-F77



Small Male Flange Receptacle

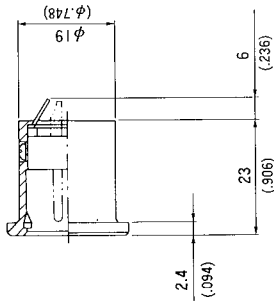
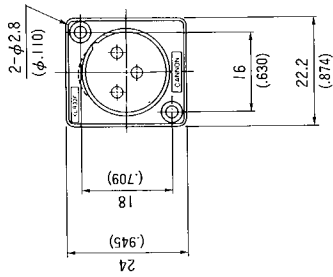
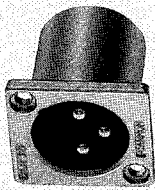
XLR- \*-32-F77



# XLR

Male Mini Flange Receptacle

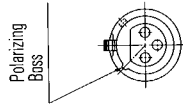
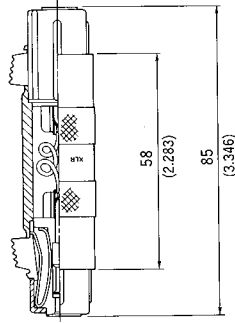
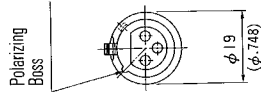
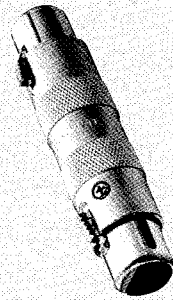
XLR-\*.32-F512



## Bulkhead-Adapters

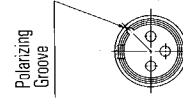
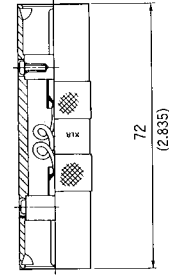
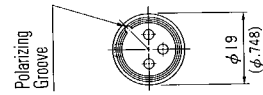
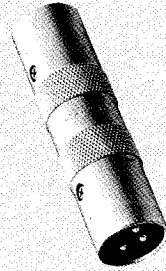
Female-Female Bulkhead

XLR-\*.1-1-1-1



Male-Male Bulkhead

XLR-\*.1-1-2-12



Dust Caps

Plastic

Metallic

For use with

# General Performance Characteristics

Number of Contacts	2	3	4	5	6	6	7
Contact Arrangement Designator	2A	3	4	5	6	6A	7
Contact Arrangement Configuration							
Rated Current	15A	※ 10A	10A	7.5A	7.5A	7.5A	5A
Service Voltage(AC)	200V	133V	133V	133V	133V	133V	133V
Dielectric Withstanding Voltage(AC)	1600V	1400V	1400V	1400V	1400V	1400V	1400V
Insulation Resistance	5,000MΩ min. at 500VDC						
Contact Resistance	See specifications in each series						
Operating Temperature	-35°C ~ +85°C (XLR/XLG; -55°C ~ +125°C)						
Wire Accommodation Reference AWG	#14	#14	#16	#18	#18	#18	#20
Wire Cross Section (max.)	2.0mm <sup>2</sup>	2.0mm <sup>2</sup>	1.4mm <sup>2</sup>	0.9mm <sup>2</sup>	0.9mm <sup>2</sup>	0.9mm <sup>2</sup>	0.5mm <sup>2</sup>
Stranded Wire O.D. (max.)	2.1mm	2.1mm	1.6mm	1.4mm	1.4mm	1.4mm	1.0mm

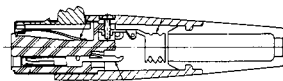
※ XLR/XLG : 15A  
XLM/XLB-PC : 3A

## Series Variations

Series/Shell	Styles	Contact Arrangement						
		2A	3	4	5	6	6A	7
XLB2	11/11B	*	*	*	*	*	*	*
	12/12B	*	*	*	*	*	*	*
	31/31B	*	*	*	*	*	*	*
	32/32B	*	*	*	*	*	*	*
	41/41B	*	*	*	*	*	*	*
	42/42B	*	*	*	*	*	*	*
(Crimp)	11F		*					
XLR	11C	*	*	*	*	*	*	*
	12C	*	*	*	*	*	*	*
	13	*	*	*	*	*	*	*
	14	*	*	*	*	*	*	*
	31	*	*	*	*	*	*	*
	32	*	*	*	*	*	*	*
	31-F77	*	*	*	*	*	*	*
	32-F77	*	*	*	*	*	*	*
	32-F512	*	*	*	*	*	*	*
XLA	11		*	*				
	12		*					
XLG	11/11B		*					
	12/12B		*					
	31/31B		*					
	32/32B		*					
XLB	31/32-PCS		*					
	31/32-PCV		*					
	31/32-PCH-L		*					
	31/32-PCH-R		*					
XLM	31/32-PCS		*					
	31/32-PCV		*					
	31/32-PCH-L		*					
	31/32-PCH-R		*					

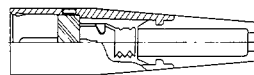
## Shell Styles

### ● Female Plug



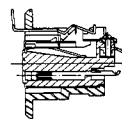
Type ; 11, 11B, 11C

### ● Male Plug



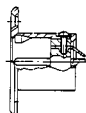
Type ; 12, 12B, 12C

### ● Female Flange Receptacle



Type ; 13  
31, 31B,  
41, 41B,  
31-F77

### ● Male Flange Receptacle



Type ; 14  
32, 32B,  
42, 42B,  
32-F77,  
32-F512