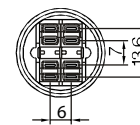
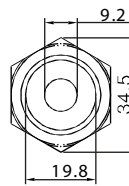
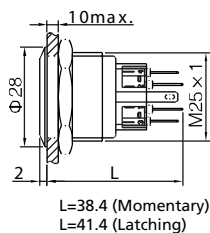


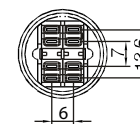
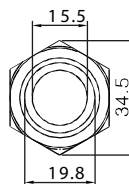
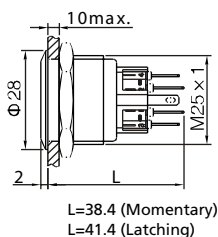
Pushbutton Switches

Anti-Vandal Pushbutton Switch - Mounting Hole Ø25mm

PAV25 Series



PAV25D...1... Dot illuminated; 2NO2NC



PAV25D...2... Ring illuminated; 2NO2NC

LAMP RATINGS

Lamp Type	LED Lamp AC/DC *			Lamp Circuit Diagram
	AC/DC6V	AC/DC12V	AC/DC110V	
Rated Voltage	AC/DC24V	AC/DC36V	AC/DC220V	<p>Using AC/DC LED lamp, the terminals have not difference of anode and cathode; Using inner resistance, don't need to connect outer resistance. (PAV16 Series have no inner resistance).</p>
Rated Amper	about 15mA		about 5mA	
LED Colors	red, green, yellow, orange, blue, white			
Life	40,000 hours (reference)			

* DC LED and other voltages can be made by request.

SWITCHING

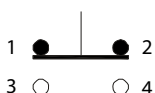
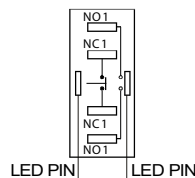


DIAGRAM OF TERMINATION



The second and third switch unit are the same.

How to order:

PAV25

1 CONTACT:

- S 1NO1NC
- D 2NO2NC

2 OPERATING MODE:

- M Momentary
- L Latching

3 TERMINATION:

- S Solder Lug 2.8x0.5mm

4 ILLUMINATION:

- 0 No Illumination
- 1 Dot Type Illumination
- 2 Ring Type Illumination

5 LED COLOR:

- N No Illumination
- C Red
- D Orange
- F Green
- G Blue
- E Yellow
- B White

6 LED VOLTAGE:

- 0 No Illumination
- 6 AC/DC 6V
- 12 AC/DC 12V
- 24 AC/DC 24V
- 110 AC/DC 110V
- 220 AC/DC 220V
(Other Voltage can be made by request)

7 ENGRAVING:

- A Stop
 - B Start
 - C Return
 - D Reset
 - E Vertical bar
 - F Double vertical bar
 - G Left arrow
 - H Up arrow
 - J Square
 - K Power
 - L Light bulb
 - M Light bulb
 - N Circle
- (Other engraving can be made by request)

Specifications:

CHARACTERISTICS

- > Protection Degree: IP65 (for surface of the panel)
- > Anti Vandal Degree: IK10
- > Front Shape: Flat round
- > Switch Rating: 5A 250VAC Max.
- > Contact Resistance: 50mΩ Max.
- > Insulation Resistance: 1000MΩ Min.
- > Dielectric Intensity: 2000VAC
- > Operating Temperature: -20°C to +55°C
- > Mechanical Life: 1,000,000 cycles
- > Electrical Life: 50,000 cycles
- > Panel Thickness: 1 to 10 mm
- > Torque: 5 to 14 Nm
- > Operation Pressure: 5.5 to 7 N
- > Operation Distance: about 2.8mm

MATERIAL

- > Contact: Silver alloy
- > Button: Stainless steel
- > Body: Stainless steel
- > Base: PA