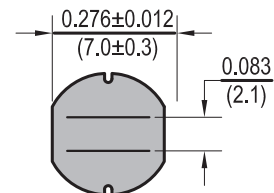
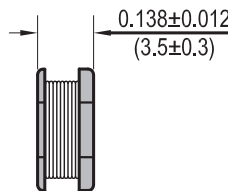
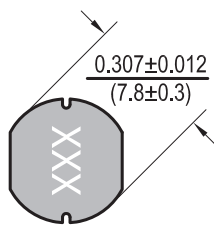




Dimensions:  $\frac{\text{Inches}}{\text{(mm)}}$



Allied Part Number	Inductance (μh)	Tolerance (%)	Test Freq.	DCR Max. (Ω)	IDC Max. (A)
PC0703-4R7M-RC	4.7	20	2.52MHz,1V	0.04	1.60
PC0703-100M-RC	10	20	2.52MHz,1V	0.08	1.44
PC0703-120M-RC	12	20	2.52MHz,1V	0.09	1.39
PC0703-150M-RC	15	20	2.52MHz,1V	0.10	1.24
PC0703-180M-RC	18	20	2.52MHz,1V	0.11	1.12
PC0703-220M-RC	22	20	2.52MHz,1V	0.13	1.07
PC0703-270M-RC	27	20	2.52MHz,1V	0.15	0.94
PC0703-330K-RC	33	10	2.52MHz,1V	0.17	0.85
PC0703-390K-RC	39	10	2.52MHz,1V	0.22	0.74
PC0703-470K-RC	47	10	2.52MHz,1V	0.25	0.68
PC0703-560K-RC	56	10	2.52MHz,1V	0.28	0.64
PC0703-680K-RC	68	10	2.52MHz,1V	0.33	0.59
PC0703-820K-RC	82	10	2.52MHz,1V	0.41	0.54
PC0703-101K-RC	100	10	1KHz,1V	0.48	0.51
PC0703-121K-RC	120	10	1KHz,1V	0.54	0.49
PC0703-151K-RC	150	10	1KHz,1V	0.75	0.40
PC0703-181K-RC	180	10	1KHz,1V	1.02	0.36
PC0703-221K-RC	220	10	1KHz,1V	1.20	0.31
PC0703-271K-RC	270	10	1KHz,1V	1.31	0.29
PC0703-330K-RC	330	10	1KHz,1V	1.50	0.28

All specifications subject to change without notice.

### Features

- Unshielded SMD low cost design
- Designed for high current applications
- Accurate and consistent dimensions for auto insertion
- Excellent for use in DC-DC converter applications
- High saturation for surface mounting

### Electrical

**Inductance Range:** 4.7μh to 330μh

**Tolerance:** 20% over entire range

Also available in tighter tolerances

**Test Frequency:** (L) as specified

**Operating Temp:** -40°C ~ +85°C

**IDC:** Current at which Inductance drops 10% of original value with a ΔT= 40 C whichever is lower.

### Resistance to Soldering Heat

Pre-Heat 150°C, 1 Min.

**Solder Composition:** Sn/Ag3.0/Cu0.5

**Solder Temp:** 260°C +/- 5°C for 10 sec ± 1 sec.

### Test Equipment

**(L):** HP4192A Impedance Analyzer

**(DCR):** Chen Hwa 502

**(IDC):** HP4284A with HP42841A or Chen Hwa 1061 + Chen Hwa 301A

### Physical

**Packaging:** 1000 pieces per 13 inch reel.

**Marking:** EIA Inductance Code.