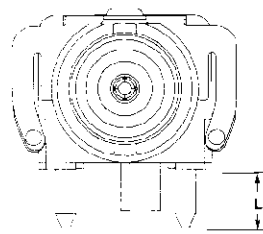


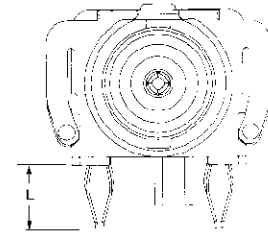
Decoupled Connectors (Continued)

Features

Mounting Post Styles



Standard



Compliant

Description	Capacitance/ Voltage	Clip	Mounting Post	L Mounting Post Length	B (see page 53 for dim. ref.)	A (see page 53 for dim. ref.)	Style ¹	Part No.
Vertical	940pF 500VDC	Standard	Standard	.137 3.48	—	—	A	413476-1
	940pF 1500VDC	Standard	Standard	.137 3.48	—	—	A	413476-2
	940pF 500VDC	Flush	Standard	.137 3.48	—	—	A	413476-3
	940pF 1500VDC	Flush	Standard	.137 3.48	—	—	A	413476-4
	940pF 1500VDC	Standard	Standard	.231 5.87	—	—	A	413476-5
Low Profile Right Angle	940pF 500VDC	Standard	Standard	.158 4.01	.519 13.18	.272 6.91	B	413515-1
	940pF 1500VDC	Standard	Standard	.158 4.01	.519 13.18	.272 6.91	B	413515-2
	2000pF 500VDC	Standard	Standard	.158 4.01	.519 13.18	.272 6.91	B	413515-3
	940pF 500VDC	Flush	Standard	.158 4.01	.519 13.18	.272 6.91	B	413515-4
	940pF 500VDC	Flush	Standard	.158 4.01	.519 13.18	.272 6.91	B	413515-5
	790pF 1600VDC	Standard	Compliant	.185 4.70	.519 13.18	.272 6.91	B	413515-6
	790pF 1600VDC	Standard	Compliant	.110 2.79	.519 13.18	.272 6.91	3	413515-7
	940pF 1500VDC	Standard	Compliant	.185 4.70	.519 13.18	.272 6.91	3	413515-8
	940pF 1500VDC	Standard	Compliant	.110 2.79	.519 13.18	.272 6.91	B	413515-9
	500pF 2200VDC	Standard	Standard	.158 4.01	.519 13.18	.272 6.91	B	1-413515-1
Standard Right Angle	940pF 500VDC	Standard	Standard	.158 4.01	.625 15.88	.338 8.59	B	413524-1
	940pF 1500VDC	Standard	Standard	.158 4.01	.625 15.88	.338 8.59	B	413524-2
	940pF 500VDC	Flush	Standard	.158 4.01	.625 15.88	.338 8.59	B	413524-3
	940pF 1500VDC	Flush	Standard	.158 4.01	.625 15.88	.338 8.59	B	413524-4
	940pF 1500VDC	Standard	Compliant	.110 2.79	.625 15.88	.338 8.59	B	413524-5
Low Profile Right Angle TAC	640pF 1500VDC	Standard	Standard	.158 4.01	.519 13.18	.272 6.91	B	414138-1
Standard Right Angle W/O Mounting Post ²	940pF 1500VDC	Standard	—	—	.625 15.88	.338 8.59	B	414215-1
Low Profile Right Angle W/Special Clip & High Temperature Housing	940pF 500VDC	Extended	Compliant	.185 4.70	.519 13.18	.272 6.91	B	414284-1
	940pF 500VDC	Extended	Compliant	.110 2.79	.519 13.18	.272 6.91	B	414284-2
Low Profile Right Angle W/High Temperature Housing	940pF 500VDC	Flush	Compliant	.185 4.70	.519 13.18	.272 6.91	B	414352-1
	940pF 500VDC	Flush	Compliant	.110 2.79	.519 13.18	.272 6.91	B	414352-2
Low Profile Right-Angle Shortened Electrical Path Clip	940pF 1500VDC	Short Electrical Path	Compliant	.185 4.70	.519 13.18	.272 6.91	B	414458-1

¹See page 53 for Connector Styles

²See customer drawing for PC Board Layout