

PLEASE CHECK WWW.MOLEX.COM FOR LATEST PART INFORMATION

Part Number: [0009503221](#)
Status: **Active**
Overview: [kk](#)
Description: 3.96mm (.156") Pitch KK® Crimp Terminal Housing, Friction Ramp, 22 Circuits

Documents:

[3D Model](#) [Product Specification PS-08-50 \(PDF\)](#)
[Drawing \(PDF\)](#) [RoHS Certificate of Compliance \(PDF\)](#)

Agency Certification

CSA LR19980

General

Product Family Crimp Housings
 Series [2139](#)
 Overview [kk](#)
 Product Name KK®

Physical

Circuits (maximum) 22
 Color - Resin Natural
 Flammability 94V-2
 Gender Female
 Glow-Wire Compliant No
 Lock to Mating Part Yes
 Material - Resin Nylon
 Number of Rows 1
 Packaging Type Bag
 Panel Mount No
 Pitch - Mating Interface (in) 0.156 In
 Pitch - Mating Interface (mm) 3.96 mm
 Temperature Range - Operating 0°C to +75°C

Material Info

Old Part Number 2139-22A

Reference - Drawing Numbers

Packaging Specification PK-2139-001
 Product Specification PS-08-50
 Sales Drawing SD-2139

EU RoHS

**ELV and RoHS
 Compliant**
**REACH SVHC
 Contains SVHC: No**
**Halogen-Free
 Status**
Not Reviewed

China RoHS



**Need more information on product
 environmental compliance?**

Email productcompliance@molex.com
 For a multiple part number RoHS Certificate of
 Compliance, [click here](#)

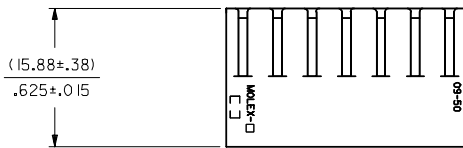
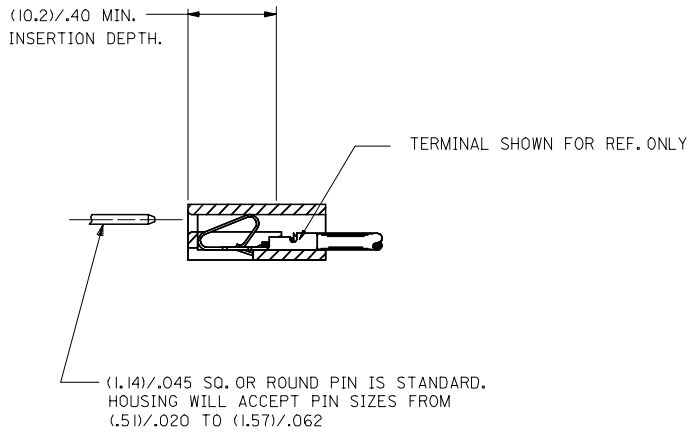
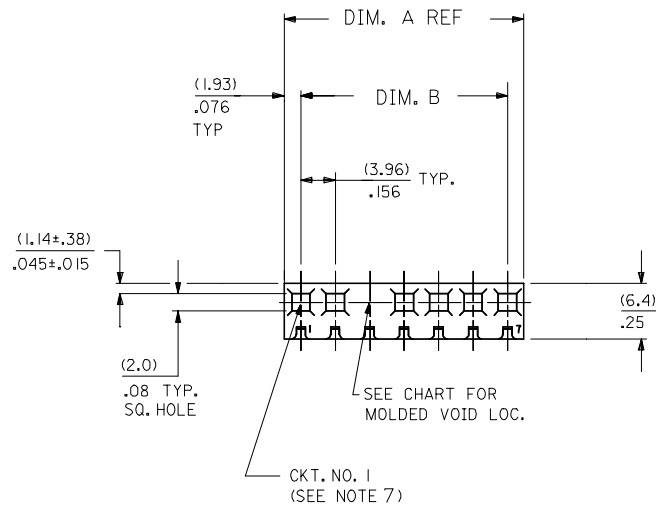
Please visit the [Contact Us](#) section for any
 non-product compliance questions.

Search Parts in this Series

[2139Series](#)

Use With

2478 Crimp Terminals for 18-24 AWG, [2578](#)
 Crimp Terminals for 22-26 AWG



| OPT. CODE | RAMP | POL. RIB | EARS | MATERIAL | ENGRAVING | PACKAGING |
|-----------|-----------|----------|------|---------------|-----------|---------------|
| A | STD. RAMP | NO | NO | NYLON 94V-2 | STD. | PK-2139-001 |
| C | NONE | NO | NO | NYLON 94V-2 | STD. | PK-2139-002 |
| G | WIDE RAMP | NO | NO | NYLON 94V-2 | STD. | PK-2139-001 |
| M | STD. RAMP | NO | NO | NYLON 6 94V-2 | STD. | TBD-INDIA |
| N | NONE | NO | NO | NYLON 6 94V-2 | STD. | TBD-INDIA |
| P | STD. RAMP | YES | NO | NYLON 94V-2 | STD. | TBD SINGAPORE |

NO. OF CKT'S. **2139-N***-***-*****

SELECTIVE RAMP LOC.
BLANK=NONE
AA=1ST. SEL. LOC.
AB=2ND. SEL. LOC., ETC.

VOID CODE
NO. CORRESPONDS TO
CKT. NO. VOIDED.
MULT. VOIDS START WITH 51.

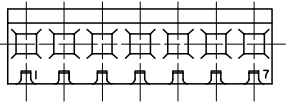
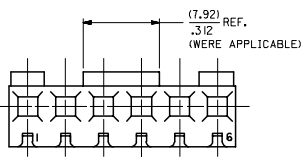
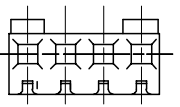
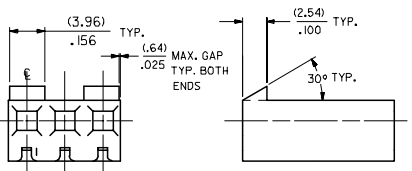
COLOR CODE
BLANK=NATURAL
GN=GREEN
YW=YELLOW
RD=RED
OR=ORNANGE
BU=BLUE
BK=BLACK

SEE NOTE 6

| DIM. A | DIM. B | NO. OF |
|---------|-------------|--------|
| (7.82) | (3.96±.13) | 2 |
| .308 | .156±.005 | |
| (11.79) | (7.92±.13) | 3 |
| .464 | .312±.005 | |
| (15.75) | (11.89±.13) | 4 |
| .620 | .468±.005 | |
| (19.71) | (15.85±.13) | 5 |
| .776 | .624±.005 | |
| (23.67) | (19.81±.13) | 6 |
| .932 | .780±.005 | |
| (27.64) | (23.77±.13) | 7 |
| 1.088 | .936±.005 | |
| (31.60) | (27.74±.25) | 8 |
| 1.244 | 1.092±.010 | |
| (35.56) | (31.70±.25) | 9 |
| 1.400 | 1.248±.010 | |
| (39.52) | (35.66±.25) | 10 |
| 1.556 | 1.404±.010 | |
| (43.48) | (39.62±.25) | 11 |
| 1.712 | 1.560±.010 | |
| (47.45) | (43.59±.25) | 12 |
| 1.868 | 1.716±.010 | |
| (51.41) | (47.55±.31) | 13 |
| 2.024 | 1.872±.012 | |
| (55.37) | (51.51±.36) | 14 |
| 2.180 | 2.028±.014 | |
| (59.33) | (55.47±.36) | 15 |
| 2.336 | 2.184±.014 | |
| (63.30) | (59.44±.36) | 16 |
| 2.492 | 2.340±.014 | |
| (67.26) | (63.40±.36) | 17 |
| 2.648 | 2.496±.014 | |
| (71.22) | (67.36±.36) | 18 |
| 2.804 | 2.652±.014 | |
| (75.18) | (71.32±.36) | 19 |
| 2.960 | 2.808±.014 | |
| (79.15) | (75.29±.36) | 20 |
| 3.116 | 2.964±.014 | |
| (83.11) | (79.25±.46) | 21 |
| 3.272 | 3.120±.018 | |
| (87.07) | (83.21±.46) | 22 |
| 3.428 | 3.276±.018 | |
| (91.03) | (87.17±.46) | 23 |
| 3.584 | 3.432±.018 | |
| (95.00) | (91.14±.46) | 24 |
| 3.740 | 3.588±.018 | |

- NOTES:
- MATERIAL: SEE LEGEND.
 - FINISH: N/A
 - PARTS CONFORM TO PRODUCT SPECIFICATION PS-08-50.
 - PACKAGING INFORMATION: SEE LEGEND
 - THIS HOUSING FOR USE WITH TERMINAL NO. 2478 (18 TO 24 GA) & 2578 (22 TO 26 GA), WITH (2.54)±.100 MAX. INSULATION DIA. HOUSING 41695 IS RECOMMENDED FOR OVER (2.54)±.100 DIA. INSULATION.
 - DIMENSIONS GIVEN ACROSS CENTERLINES ARE SYMMETRICAL ABOUT THOSE CENTERLINES WITHIN HALF THE TOTAL TOLERANCE.
 - FIRST CKT. NO. ON 1 THRU 5 CKT. HOUSINGS, FIRST AND LAST CKT. NO. ON 6 CKT HOUSING AND LARGER.
 - MAX BOW .005 MM/MM OR .005 IN/IN
 - 2139-NP-* IS MANUFACTURED IN SINGAPORE ONLY.

| UPDATE PER ECN ECN NO: UCP2006-0451 2005/11/09 DRAWN: JUNE CHECKED: JUNE APPROVED: JUNE APPROVAL: JUNE | QUALITY SYMBOLS ▽=0 ▽=0 | GENERAL TOLERANCES (UNLESS SPECIFIED) <table border="1"> <tr><th></th><th>MM</th><th>INCH</th></tr> <tr><td>4 PLACES ±</td><td>±.010</td><td>±.0004</td></tr> <tr><td>3 PLACES ±</td><td>±.010</td><td>±.0004</td></tr> <tr><td>2 PLACES ±</td><td>±.025</td><td>±.0010</td></tr> <tr><td>1 PLACE ±</td><td>±0.36</td><td>±.0141</td></tr> <tr><td colspan="3">ANGULAR ±1/2°</td></tr> </table> | | | MM | INCH | 4 PLACES ± | ±.010 | ±.0004 | 3 PLACES ± | ±.010 | ±.0004 | 2 PLACES ± | ±.025 | ±.0010 | 1 PLACE ± | ±0.36 | ±.0141 | ANGULAR ±1/2° | | | DIMENSION STYLE MM/IN | SCALE --- | DESIGN UNITS INCH | THIRD ANGLE PROJECTION |
|--|-------------------------------|--|-------|---|----|------|------------|-------|--------|------------|-------|--------|------------|-------|--------|-----------|-------|--------|---------------|--|--|---------------------------------|--------------|-----------------------------|------------------------|
| | | | MM | INCH | | | | | | | | | | | | | | | | | | | | | |
| | | 4 PLACES ± | ±.010 | ±.0004 | | | | | | | | | | | | | | | | | | | | | |
| | | 3 PLACES ± | ±.010 | ±.0004 | | | | | | | | | | | | | | | | | | | | | |
| 2 PLACES ± | ±.025 | ±.0010 | | | | | | | | | | | | | | | | | | | | | | | |
| 1 PLACE ± | ±0.36 | ±.0141 | | | | | | | | | | | | | | | | | | | | | | | |
| ANGULAR ±1/2° | | | | | | | | | | | | | | | | | | | | | | | | | |
| DRAWN BY: SAMIEC CHECKED BY: PATEL APPROVED BY: LENZ DATE: 1986/01/17 | | DRAWN BY: DATE: 1986/01/17 CHECKED BY: DATE: 1986/01/17 APPROVED BY: DATE: 1986/01/07 | | TITLE CONNECTOR HOUSING .156 CL CRIMP TERMINAL 2139 SERIES DWG. | | | | | | | | | | | | | | | | | | | | | |
| MATERIAL NO. SEE CHART SIZE D | | DOCUMENT NO. SD-2139 | | MOLEX INCORPORATED | | | | | | | | | | | | | | | | | | | | | |
| DRAFT WHERE APPLICABLE MUST REMAIN WITHIN DIMENSIONS | | THIS DRAWING CONTAINS INFORMATION THAT IS PROPRIETARY TO MOLEX INCORPORATED AND SHOULD NOT BE USED WITHOUT WRITTEN PERMISSION | | SHEET NO. 1 OF 4 | | | | | | | | | | | | | | | | | | | | | |



| NO. OF CKT'S. | STANDARD RAMP IS LOCATED ON % OF CKT. NOS. |
|---------------|--|
| 2 | ACROSS ENTIRE PART |
| 3 | 1,3 |
| 4 | 1,4 |
| 5 | 1,3,5 |
| 6 | 1,3,4,6 |
| 7 | ACROSS ENTIRE PART |
| 8 | 1,3,6,8 |
| 9 | ACROSS ENTIRE PART |
| 10 | 1,3,5,6,8,10 |
| 11 | ACROSS ENTIRE PART |
| 12 | 1,3,5,8,10,12 |
| 13 | 1,3,5,7,9,11,13 |
| 14 | 1,3,5,7,8,10,12,14 |
| 15 | 1,3,5,7,9,11,13,15 |
| 16 | 1,3,5,7,10,12,14,16 |
| 17 | 1,3,5,7,9,11,13,15,17 |
| 18 | 1,3,5,7,9,10,12,14,16,18 |
| 19 | 1,3,5,7,9,11,13,15,17,19 |
| 20 | 1,3,5,7,9,12,14,16,18,20 |
| 21 | 1,3,5,7,9,11,13,15,17,19,21 |
| 22 | 1,3,5,7,9,11,12,14,16,18,20,22 |
| 23 | 1,3,5,7,9,11,13,15,17,19,21,23 |
| 24 | 1,3,5,7,9,11,14,16,18,20,22,24 |

STD. RAMP OPTION
SEE CHART FOR RAMP LOCATIONS.

| 2139-NA-* | | | 2139-NC-* | | |
|------------|-------------|--------|--------------|-------------|--------|
| ORDER NO. | ENG. NO. | VOIDS | ORDER NO. | ENG. NO. | VOIDS |
| 09-50-3021 | 2139-2A | | 09-50-7021 | 2139-2C | |
| 09-50-3031 | 2139-3A | | 09-50-7031 | 2139-3C | |
| 09-50-3041 | 2139-4A | | 09-50-7041 | 2139-4C | |
| 09-50-3051 | 2139-5A | | 09-50-7051 | 2139-5C | |
| 09-50-3061 | 2139-6A | | 09-50-7061 | 2139-6C | |
| 09-50-3071 | 2139-7A | | 09-50-7071 | 2139-7C | |
| 09-50-3081 | 2139-8A | | 09-50-7081 | 2139-8C | |
| 09-50-3091 | 2139-9A | | 09-50-7091 | 2139-9C | |
| 09-50-3101 | 2139-10A | | 09-50-7101 | 2139-10C | |
| 09-50-3111 | 2139-11A | | 09-50-7111 | 2139-11C | |
| 09-50-3121 | 2139-12A | | 09-50-7121 | 2139-12C | |
| 09-50-3131 | 2139-13A | | 09-50-7131 | 2139-13C | |
| 09-50-3141 | 2139-14A | | 09-50-7141 | 2139-14C | |
| 09-50-3151 | 2139-15A | | 09-50-7151 | 2139-15C | |
| 09-50-3161 | 2139-16A | | 09-50-7161 | 2139-16C | |
| 09-50-3171 | 2139-17A | | 09-50-7171 | 2139-17C | |
| 09-50-3181 | 2139-18A | | 09-50-7181 | 2139-18C | |
| 09-50-3191 | 2139-19A | | 09-50-7191 | 2139-19C | |
| 09-50-3201 | 2139-20A | | 09-50-7201 | 2139-20C | |
| 09-50-3211 | 2139-21A | | 09-50-7211 | 2139-21C | |
| 09-50-3221 | 2139-22A | | 09-50-7221 | 2139-22C | |
| 09-50-3231 | 2139-23A | | 09-50-7231 | 2139-23C | |
| 09-50-3241 | 2139-24A | | 09-50-7241 | 2139-24C | |
| 09-50-3036 | 2139-3A-2 | 2 | 09-50-7117 | 2139-11C-51 | 2,7,10 |
| | 2139-10A-2 | 2 | 09-50-7166 | 2139-16C-2 | 2 |
| | 2139-10A-51 | 2,5 | 09-50-7106 | 2139-10C-2 | 2 |
| | 2139-7A-2 | 2 | 09-50-7107 | 2139-10C-51 | 2,5 |
| | 2139-11A-51 | 2,7,10 | 09-50-7076 | 2139-7C-2 | 2 |
| 09-50-3163 | 2139-16A-2 | 2 | | 2139-4C-3 | 3 |
| 09-50-3073 | 2139-10A-7 | 7 | T 09-50-7108 | 2139-10C-4 | 4 |
| 09-50-3083 | 2139-10A-8 | 8 | T 09-50-7109 | 2139-10C-5 | 5 |
| 09-50-3104 | 2139-10A-9 | 9 | | 2139-5C-2 | 2 |
| 09-50-3162 | 2139-16A-51 | 2,15 | 09-50-3077 | 2139-7C-3 | 3 |
| 09-50-3092 | 2139-9A-51 | 2,6 | 09-50-3078 | 2139-7C-5 | 5 |
| 09-50-3075 | 2139-7A-51 | 1,7 | 09-50-7142 | 2139-14C-5 | 5 |
| | 2139-7A-6 | 6 | | | |
| | 2139-5A-51 | 2,4 | | | |
| 09-50-3047 | 2139-4A-3 | 3 | | | |
| | 2139-11A-2 | 2 | | | |
| 09-50-3052 | 2139-5A-4 | 4 | | | |
| 09-50-3076 | 2139-7A-52 | 4,7 | | | |
| 09-50-3125 | 2139-12A-5 | 5 | | | |
| | 2139-7A-3 | 3 | | | |
| 09-50-3053 | 2139-7A-5 | 5 | | | |
| | 2139-5A-2 | 2 | | | |
| 09-50-3127 | 2139-12A-2 | 2 | | | |
| 09-50-3143 | 2139-14A-2 | 2 | | | |
| 09-50-3202 | 2139-20A-2 | 2 | | | |
| S | 2139-9A-4 | 4 | | | |
| 09-50-3126 | 2139-12A-11 | 11 | | | |
| 09-50-3142 | 2139-14A-13 | 13 | | | |
| 09-50-3084 | 2139-8A-4 | 4 | | | |
| 09-50-3037 | 2139-3A-3 | 3 | | | |
| 09-50-3182 | 2139-18A-2 | 2 | | | |
| 09-50-3157 | 2139-15A-2 | 2 | | | |

| | | | | | |
|---|--------------------------------------|---|--|---|------------------------|
| UPDATE TITLE BLOCK DEC NO: UCP2006-0451 DRAWN: JUNE 2005/17/09 CHECKED: JUNE 2005/17/12 APPROVED: JUNE 2005/17/14 AFT | QUALITY SYMBOLS ▽=0 ▽=0 | GENERAL TOLERANCES (UNLESS SPECIFIED) mm INCH 4 PLACES ± .010 ± .010 3 PLACES ± .025 ± .014 2 PLACES ± 0.36 ± .014 1 PLACE ± 0.36 ± .014 ANGULAR ±1/2° | DIMENSION STYLE MM/IN | SCALE --- DESIGN UNITS INCH | THIRD ANGLE PROJECTION |
| | | DRAWN BY: SAMIEC DATE: 1986/01/17 CHECKED BY: PATEL DATE: 1986/01/17 APPROVED BY: LENZ DATE: 1986/01/17 | MATERIAL NO. SEE CHART DOCUMENT NO. SD-2139 SHEET NO. 2 OF 4 | CONNECTOR HOUSING FOR CRIMP TERMINAL 2139 SERIES DWG. MOLEX INCORPORATED | |