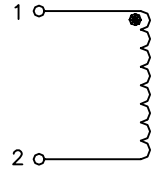


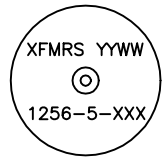
XFRL-1256-5 SERIES INDUCTORS

1. OCL drop 5% Typ at Isat
2. Temp Rise of 40°C Typ at Irated
3. Inductance $\pm 10\%$ measured at 1KHZ, values below 10uH $\pm 20\%$
4. Leads for PC mounting tinned to within 1/16" of body
5. Custom values available upon request
6. Coils wrapped with sleeving UL-VW-1 rated
7. Center hole for mechanical mounting
8. 1000VAC Hypot (Wdg to Core through Sleeve)
9. DCR measured @20°C
10. Spacer available at additional cost to facilitate PC board washing
11. Operating Temp -40°C to +85°C

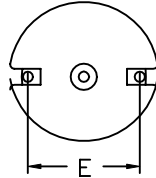
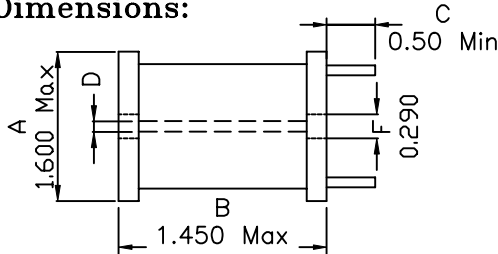
Schematic:



Mechanical Dimensions:



TOP VIEW



BOTTOM VIEW

D: Clearance Hole for
8/32 Screw With Washer

TOLERANCES:

.xxx ± 0.010

Dimensions in INCH

Part Number	INDUCTANCE ³ (uH)	DCR ⁹ Ohms Max	Isat ¹ (A)	Irated ² (A)	Dimension E Typ
XFRL-1256-5-1.8	1.8	0.002	155.0	35.0	1.110
XFRL-1256-5-2.2	2.2	0.002	155.0	35.0	1.110
XFRL-1256-5-2.7	2.7	0.002	125.0	35.0	1.110
XFRL-1256-5-3.3	3.3	0.002	125.0	35.0	1.110
XFRL-1256-5-3.9	3.9	0.003	102.0	35.0	1.110
XFRL-1256-5-4.7	4.7	0.003	87.0	35.0	1.110
XFRL-1256-5-5.6	5.6	0.003	87.0	35.0	1.110
XFRL-1256-5-6.8	6.8	0.003	87.0	35.0	1.110
XFRL-1256-5-8.2	8.2	0.003	76.0	35.0	1.110
XFRL-1256-5-10	10.0	0.004	67.0	35.0	1.110
XFRL-1256-5-12	12.0	0.004	60.0	35.0	1.160
XFRL-1256-5-15	15.0	0.005	49.0	35.0	1.160
XFRL-1256-5-18	18.0	0.007	45.0	27.0	1.160
XFRL-1256-5-22	22.0	0.007	42.0	27.0	1.160
XFRL-1256-5-27	27.0	0.008	35.0	27.0	1.160
XFRL-1256-5-33	33.0	0.009	34.0	27.0	1.160
XFRL-1256-5-39	39.0	0.010	30.0	27.0	1.160
XFRL-1256-5-47	47.0	0.011	28.0	27.0	1.160
XFRL-1256-5-56	56.0	0.013	26.0	21.0	1.160
XFRL-1256-5-68	68.0	0.015	23.0	21.0	1.250
XFRL-1256-5-82	82.0	0.017	20.0	21.0	1.280
XFRL-1256-5-100	100.0	0.018	19.0	21.0	1.250
XFRL-1256-5-120	120.0	0.022	18.0	17.0	1.160
XFRL-1256-5-150	150.0	0.025	16.0	17.0	1.160
XFRL-1256-5-180	180.0	0.035	14.0	13.5	1.100
XFRL-1256-5-220	220.0	0.040	13.0	13.5	1.100
XFRL-1256-5-270	270.0	0.044	11.0	13.5	1.100
XFRL-1256-5-330	330.0	0.049	10.0	13.5	1.110
XFRL-1256-5-390	390.0	0.070	9.7	11.4	1.150
XFRL-1256-5-470	470.0	0.078	8.8	11.4	1.070
XFRL-1256-5-560	560.0	0.105	8.1	9.0	1.070
XFRL-1256-5-680	680.0	0.115	7.4	9.0	1.070
XFRL-1256-5-820	820.0	0.127	6.7	9.0	1.120
XFRL-1256-5-1000	1000.0	0.176	6.1	7.2	1.120
XFRL-1256-5-1200	1200.0	0.195	5.5	7.2	1.120
XFRL-1256-5-1500	1500.0	0.274	5.0	5.5	1.120
XFRL-1256-5-1800	1800.0	0.302	4.5	5.5	1.130
XFRL-1256-5-2200	2200.0	0.338	4.1	5.5	1.160
XFRL-1256-5-2700	2700.0	0.459	3.7	4.5	1.020
XFRL-1256-5-3300	3300.0	0.642	3.4	4.0	1.020
XFRL-1256-5-3900	3900.0	0.699	3.0	4.0	1.140
XFRL-1256-5-4700	4700.0	0.775	2.8	4.0	1.140
XFRL-1256-5-5600	5600.0	0.843	2.6	4.0	1.140
XFRL-1256-5-6800	6800.0	1.150	2.3	2.8	1.060
XFRL-1256-5-8200	8200.0	1.260	2.1	2.8	1.160
XFRL-1256-5-10000	10000.0	1.740	1.9	2.0	1.130
XFRL-1256-5-12000	12000.0	1.920	1.7	2.0	1.130
XFRL-1256-5-15000	15000.0	2.170	1.5	2.0	1.130