

PLEASE CHECK WWW.MOLEX.COM FOR LATEST PART INFORMATION

Part Number: [0533131465](#)
Status: **Active**
Description: 2.00mm (.079") Pitch Mi II™ System Wire-to-Board Header, Dual Row, Vertical, Lead-free, 14 Circuits

Documents:

| | |
|--|--|
| 3D Model | Product Specification PS-51160-006 (PDF) |
| Drawing (PDF) | Product Specification PS-52478-002 (PDF) |
| Product Specification PS-51089-005 (PDF) | RoHS Certificate of Compliance (PDF) |

Agency Certification

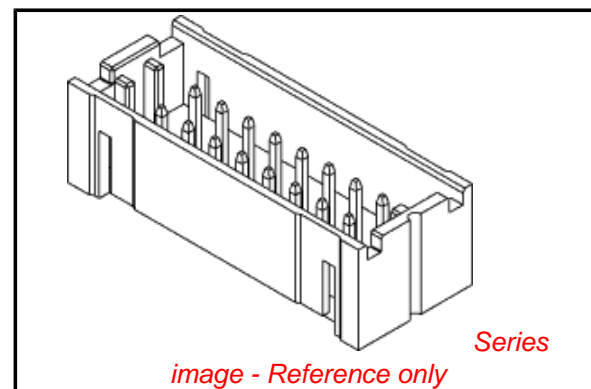
| | |
|-----|---------|
| CSA | LR19980 |
| UL | E29179 |

General

| | |
|----------------|-----------------------|
| Product Family | PCB Headers |
| Series | 53313 |
| Application | Wire-to-Board |
| Product Name | Mi II™ |

Physical

| | |
|--------------------------------|-----------------|
| Breakaway | No |
| Circuits (Loaded) | 14 |
| Circuits (maximum) | 14 |
| Color - Resin | Gray |
| Durability (mating cycles max) | 30 |
| First Mate / Last Break | No |
| Flammability | 94V-0 |
| Glow-Wire Compliant | No |
| Guide to Mating Part | No |
| Keying to Mating Part | None |
| Lock to Mating Part | Yes |
| Material - Metal | Brass |
| Material - Plating Mating | Tin |
| Material - Plating Termination | Tin |
| Material - Resin | Nylon |
| Number of Rows | 2 |
| Orientation | Vertical |
| PC Tail Length (in) | 0.138 In |
| PC Tail Length (mm) | 3.50 mm |
| PCB Locator | Yes |
| PCB Retention | Yes |
| PCB Thickness Recommended (in) | 0.062 In |
| PCB Thickness Recommended (mm) | 1.60 mm |
| Packaging Type | Tray |
| Pitch - Mating Interface (in) | 0.079 In |
| Pitch - Mating Interface (mm) | 2.00 mm |
| Plating min: Mating (µin) | 40 |
| Plating min: Mating (µm) | 1.00 |
| Plating min: Termination (µin) | 40 |
| Plating min: Termination (µm) | 1.00 |
| Polarized to PCB | Yes |
| Shrouded | Fully |
| Stackable | No |
| Surface Mount Compatible (SMC) | No |
| Temperature Range - Operating | -40°C to +105°C |



EU RoHS

ELV and RoHS Compliant
REACH SVHC
 Not Reviewed
Halogen-Free Status

China RoHS



Need more information on product environmental compliance?

Email productcompliance@molex.com
 For a multiple part number RoHS Certificate of Compliance, [click here](#)

Please visit the [Contact Us](#) section for any non-product compliance questions.

Search Parts in this Series

[53313Series](#)

Mates With

Wire-to-Board IDT Receptacle [52478](#) ,
[52484](#). [51089](#) Crimp Terminal

Termination Interface: Style

Through Hole

Electrical

Current - Maximum per Contact

2A

Voltage - Maximum

125V

Material Info

Reference - Drawing Numbers

Product Specification

PS-51089-005, PS-51160-006, PS-52478-002,

RPS-51160-005

Sales Drawing

SD-53313-002

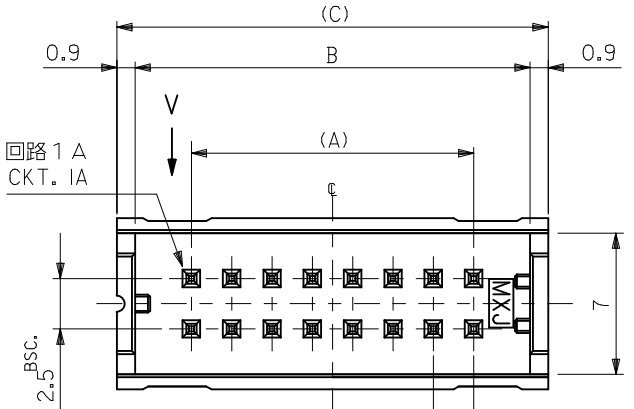
This document was generated on 04/16/2010

PLEASE CHECK WWW.MOLEX.COM FOR LATEST PART INFORMATION

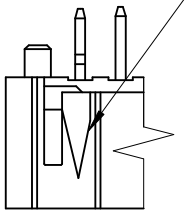
注記
NOTES

- 材料:
MATERIALS:
ウエハー : ホリアミド、ガラス充填、UL94V-0、色: グレー
WAFER : PA, GLASS FILLED, UL94V-0, COLOR: GRAY
ピン : 黄銅、スズメッキ
PIN : BRASS, PRE-TINNED
- 適合メスコネクター : 51089-***5, 52478-***15, 52484-***15
MATING CONNECTOR
適合クリップ : 51094-***00
MATING CLIP
- 推奨基板厚 :
RECOMMENDED PCB THICKNESS : t
- メッキ仕様
TERMINAL PLATING
表面メッキ : スズメッキ 1μm MIN.
SURFACE PLATE : TIN 1μm MIN.
下地メッキ : ニッケルメッキ 0.5μm MIN.
UNDER PLATE : NICKEL 0.5μm MIN.
5. ELV AND RoHS COMPLIANT.

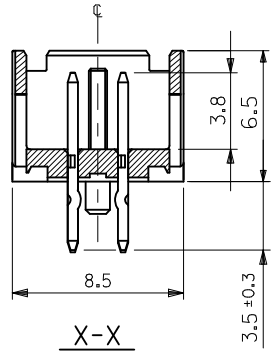
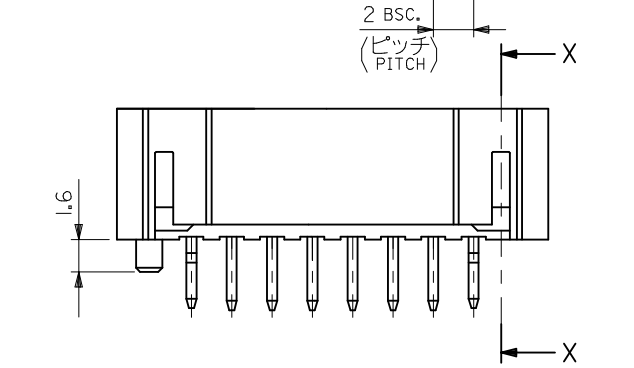
無鉛
LEAD FREE



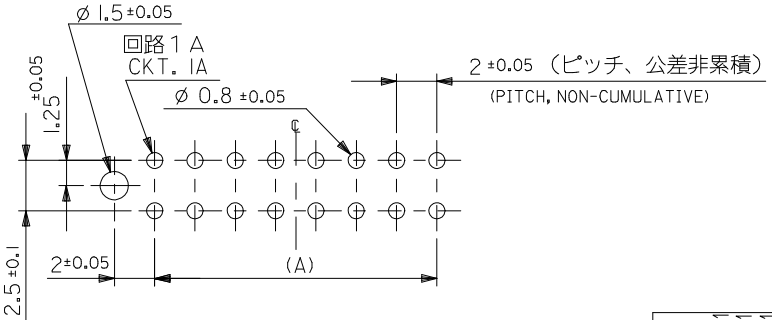
回路1 A表示
CKT. IA IDENTIFICATION



V



X-X



基板取付穴推奨寸法 (参考)
RECOMMENDED PCB HOLE DIM.(REF.)

| | | | | |
|------|------|----|--------------|------|
| 65.4 | 63.6 | 58 | 53313-6065 | 60 |
| 55.4 | 53.6 | 48 | -5065 | 50 |
| 45.4 | 43.6 | 38 | -4065 | 40 |
| 39.4 | 37.6 | 32 | -3465 | 34 |
| 35.4 | 33.6 | 28 | -3065 | 30 |
| 33.4 | 31.6 | 26 | -2865 | 28 |
| 31.4 | 29.6 | 24 | -2665 | 26 |
| 29.4 | 27.6 | 22 | -2465 | 24 |
| 27.4 | 25.6 | 20 | -2265 | 22 |
| 25.4 | 23.6 | 18 | -2065 | 20 |
| 23.4 | 21.6 | 16 | -1865 | 18 |
| 21.4 | 19.6 | 14 | -1665 | 16 |
| 19.4 | 17.6 | 12 | -1465 | 14 |
| 17.4 | 15.6 | 10 | -1265 | 12 |
| 15.4 | 13.6 | 8 | -1065 | 10 |
| 13.4 | 11.6 | 6 | -0865 | 8 |
| 11.4 | 9.6 | 4 | 53313-0665 | 6 |
| (C) | B | A | TRAY PACKAGE | CKT. |
| | | | ORDER NO. | |

| | | | | | | |
|--|--|--|-----------------|---|--------------|---|
| REVISED EC NO: J2010-0349 DRWN:TKON 2009/08/31 CHKD:KASAKAWA 2009/08/31 APPR:NUKITA 2009/08/31 | GENERAL TOLERANCES (UNLESS SPECIFIED) | | DIMENSION STYLE | SCALE | DESIGN UNITS | TITLE 2.0 W/B DUAL ROW S/T HEADER ASSY MOLEX INCORPORATED DOCUMENT NO. SD-53313-002 SHEET NO. 1 OF 1 |
| | 10 UNDER ±0.2 | | MM ONLY | 4:1 | METRIC | |
| | 10 OVER 30 UNDER ±0.25 | | DRAWN BY | DATE | | |
| | 30 OVER ±0.3 | | A. IDA | 2003/05/07 | | |
| MATERIAL 材料 注記参照 SEE NOTES | ANGULAR ±3 ° | | CHECKED BY | DATE | | |
| | DRAFT WHERE APPLICABLE MUST REMAIN WITHIN DIMENSIONS | | J. MIYAZAWA | 2003/05/07 | | |
| | | | APPROVED BY | DATE | | |
| | | | Y. ITO | 2003/05/07 | | |
| | | | MATERIAL NO. | SEE CHART | | |
| | | | SIZE | THIS DRAWING CONTAINS INFORMATION THAT IS PROPRIETARY TO MOLEX INCORPORATED AND SHOULD NOT BE USED WITHOUT WRITTEN PERMISSION | | |