

PLEASE CHECK WWW.MOLEX.COM FOR LATEST PART INFORMATION

Part Number: [0438600018](#)
Status: **Active**
Overview: [modular_plugs_jacks](#)
Description: Modular Jack, Right Angle, Low Profile, Inverted, Shielded, Offset Panel Grounding Tabs, Lightpipes, 6/4

Documents:

| | |
|---|--|
| Packaging Specification (PDF) | Drawing (PDF) |
| 3D Model | Product Specification PS-43860-003 (PDF) |
| Application Specification (PDF) | RoHS Certificate of Compliance (PDF) |

Agency Certification

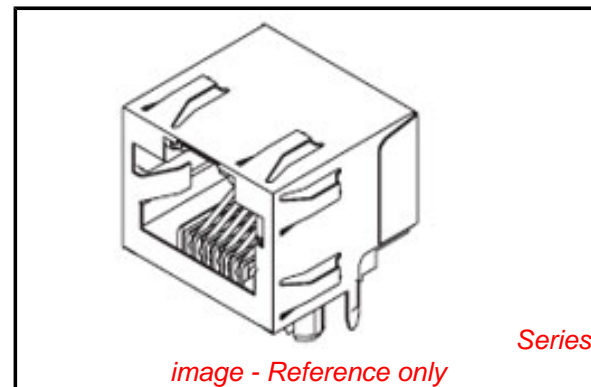
| | |
|-----|---------|
| CSA | LR19980 |
| UL | E107635 |

General

| | |
|---------------------------|-------------------------------------|
| Product Family | Modular Jacks/Plugs |
| Series | 43860 |
| Component Type | PCB Jack |
| Magnetic | No |
| Overview | modular_plugs_jacks |
| Performance Category | 3 |
| Power over Ethernet (PoE) | N/A |
| Product Name | RJ11 |

Physical

| | |
|--------------------------------|---|
| Boot Color | N/A |
| Color - Resin | Black, Clear |
| Durability (mating cycles max) | 500 |
| Flammability | 94V-0 |
| Inverted / Top Latch | Yes |
| Lightpipes/LEDs | Lightpipes |
| Material - Metal | Brass, Phosphor Bronze |
| Material - Plating Mating | Gold |
| Material - Plating Termination | Tin |
| Material - Resin | High Temperature Thermoplastic, Polycarbonate |
| Orientation | Right Angle (Side Entry) |
| PCB Locator | Yes |
| PCB Retention | Yes |
| PCB Thickness Recommended (in) | 0.062 In |
| PCB Thickness Recommended (mm) | 1.60 mm |
| Packaging Type | Tray |
| Panel Mount | With Flange |
| Pitch - Mating Interface (in) | 0.040 In |
| Pitch - Mating Interface (mm) | 1.02 mm |
| Plating min: Mating (µin) | 50 |
| Plating min: Mating (µm) | 1.25 |
| Plating min: Termination (µin) | 100 |
| Plating min: Termination (µm) | 2.5 |
| Ports | 1 |
| Positions / Loaded Contacts | 6/4 |
| Surface Mount Compatible (SMC) | No |
| Temperature Range - Operating | -40°C to +85°C |
| Termination Interface: Style | Through Hole |
| Waterproof / Dustproof | No |
| Wire/Cable Type | N/A |



EU RoHS

ELV and RoHS Compliant
REACH SVHC
 Not Reviewed
Halogen-Free Status
 Not Reviewed

China RoHS



Need more information on product environmental compliance?

Email productcompliance@molex.com
 For a multiple part number RoHS Certificate of Compliance, [click here](#)

Please visit the [Contact Us](#) section for any non-product compliance questions.

Search Parts in this Series

[43860Series](#)

Mates With

FCC 68 Plugs

Electrical

| | |
|-------------------------------|--------------------------|
| Current - Maximum per Contact | 1.5A |
| Grounding to PCB | Yes |
| Grounding to Panel | Offset Panel Ground Tabs |
| Shielded | Yes |
| Voltage - Maximum | 150V AC (RMS) |

Solder Process Data

| | |
|------------------------------|------------------------|
| Lead-free Process Capability | Wave Capable (TH only) |
|------------------------------|------------------------|

Material Info**Reference - Drawing Numbers**

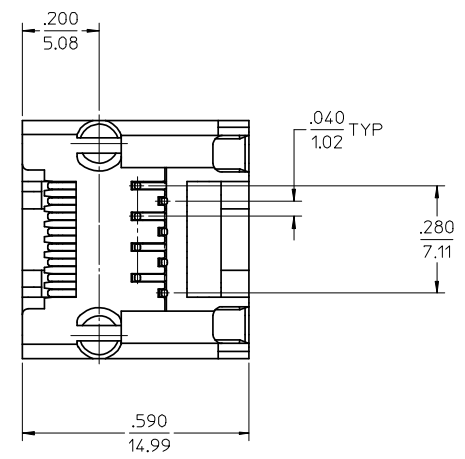
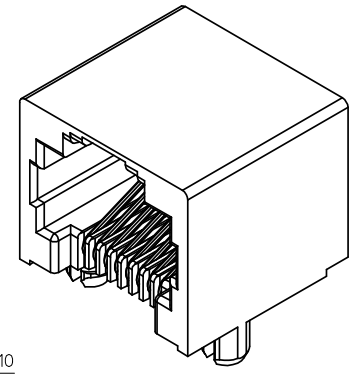
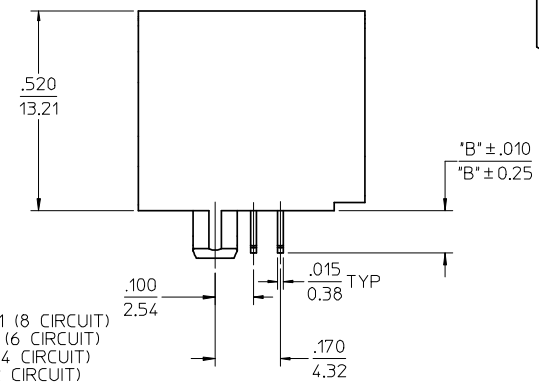
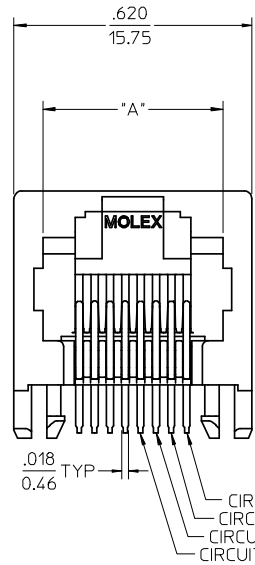
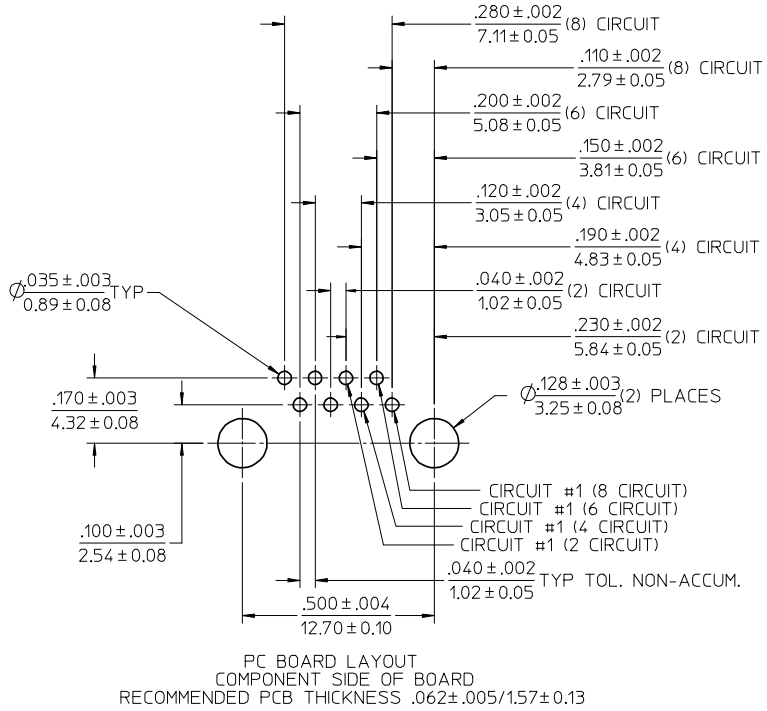
| | |
|---------------------------|---|
| Application Specification | AS-43860-001 |
| Packaging Specification | PK-43860-005 |
| Product Specification | PS-43860-003, RPS-43860-004, RPS-43860-007, RPS-43860-008, RPS-43860-013 |
| Sales Drawing | SD-43860-001 |
| Test Summary | TS-43860-001 |

This document was generated on 06/07/2010

PLEASE CHECK WWW.MOLEX.COM FOR LATEST PART INFORMATION

NOTES:

- 1) MATERIAL:
HOUSING: NYLON(PA), GLASS FILLED, UL94V-0, COLOR: SEE CHART
TERMINALS: PHOSPHOR BRONZE
- 2) FINISH:
TERMINALS:
SELECT GOLD IN CONTACT AREA: 50 MICROINCHES (1.27 MICROMETERS) MIN.
*SELECT TIN IN PC TAIL AREA: 100 MICROINCHES (2.54 MICROMETERS) MIN.,
WITH OVERALL NICKEL UNDERPLATE: 50 MICROINCHES (1.27 MICROMETERS) MIN.
*THE PRIMARY SHIPPING CARTON WILL BE LABELED "COMPLIANT TO
RoHS DIRECTIVE 2002/95/EC AND ELV ANNEX II OF DIRECTIVE
2000/53/EC". CARTONS WITHOUT THIS LABEL MAY CONTAIN PRODUCT
WITH TIN-LEAD IN THE PC TAILS.
- 3) PRODUCT SPECIFICATION AND PROCESSING PARAMETERS: PS-43860-003.
- 4) PACKAGING SPECIFICATION:
CONNECTOR ASSEMBLIES PACKAGED IN EXTRUDED TUBES PER MOLEX
PACKAGING SPECIFICATION PK-43860-004.
- 5) ALL UNTOLERANCED DIMENSIONS ARE SHOWN FOR REFERENCE ONLY.
- 6) CONFORMS TO FCC REGULATION PART 68.5 FOR MODULAR JACKS.
- 7) THIS PART CONFORMS TO CLASS B REQUIREMENTS OF COSMETIC
SPECIFICATION PS-45499-002.



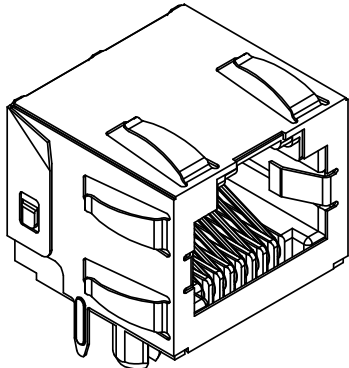
| ASSEMBLY MAT. NUM. | CONNECTOR SIZE | DIM "A" | DIM "B" | CIRCUITS | HOUSING COLOR |
|--------------------|----------------|------------|-----------|----------|---------------|
| 43860-0001 | 8 | .469/11.91 | .110/2.79 | 8 | BLACK |
| 43860-2001 | 8 | .469/11.91 | .080/2.03 | 8 | BLACK |
| 43860-0002 | 6 | .389/9.88 | .110/2.79 | 6 | BLACK |
| 43860-0003 | 6 | .389/9.88 | .110/2.79 | 4 | BLACK |
| 43860-0019 | 8 | .469/11.91 | .110/2.79 | 4 | BLACK |
| 43860-0020 | 6 | .389/9.88 | .110/2.79 | 2 | BLACK |

| | | |
|-----------------------|--------------------------|-----------------|
| ADD PART #, SHT 2 | DESCRIPTION | QUALITY SYMBOLS |
| EC NO: UCP2008-3111 | DRWN: SCHMIDT 2008/06/20 | ▽=0 |
| CHKD: JELL 2008/06/27 | APPR: FSMTH 2008/07/14 | ▽=0 |
| REV | | |
| H6 | | |

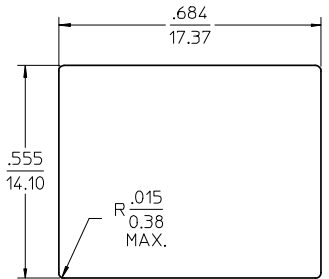
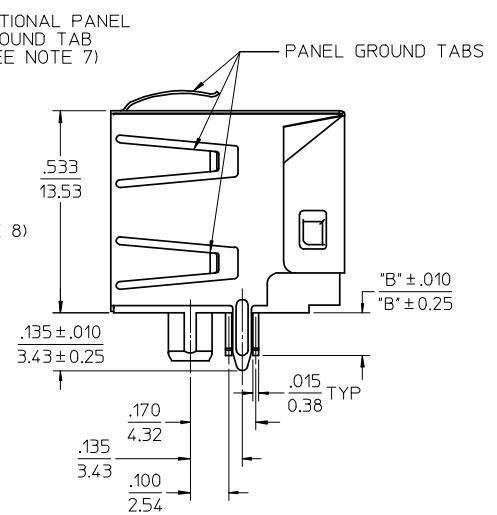
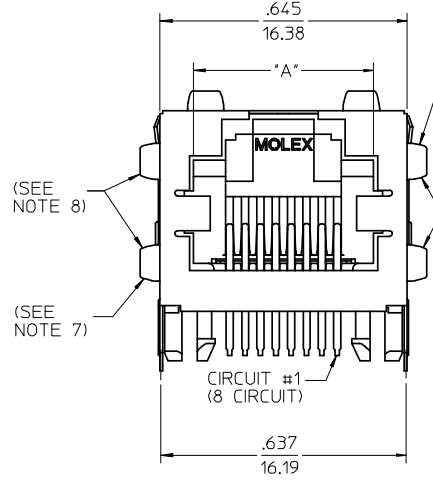
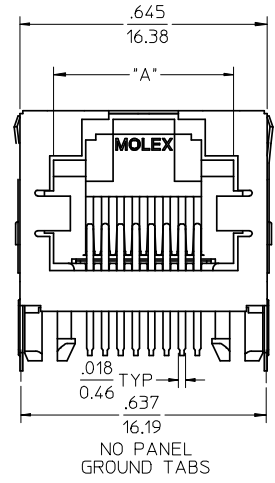
| | |
|---------------------------------------|------------------|
| GENERAL TOLERANCES (UNLESS SPECIFIED) | DIMENSION STYLE |
| | IN/MM |
| | DRAWN BY DATE |
| | CHECKED BY DATE |
| | APPROVED BY DATE |
| | MATERIAL NO. |
| | DOCUMENT NO. |
| | SHEET NO. |
| | |

| | | | |
|--|-----------------------|-----------------------|---------------------|
| 4 PLACES ± --- ± --- | 3 PLACES ± --- ± .010 | 2 PLACES ± 0.25 ± --- | 1 PLACE ± --- ± --- |
| ANGULAR ± 1/2° | | | |
| DRAFT WHERE APPLICABLE MUST REMAIN WITHIN DIMENSIONS | | | |
| SEE CHART | | | |

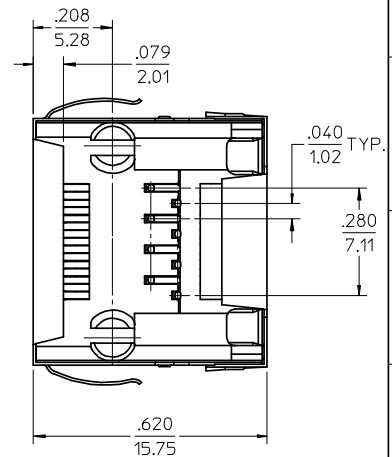
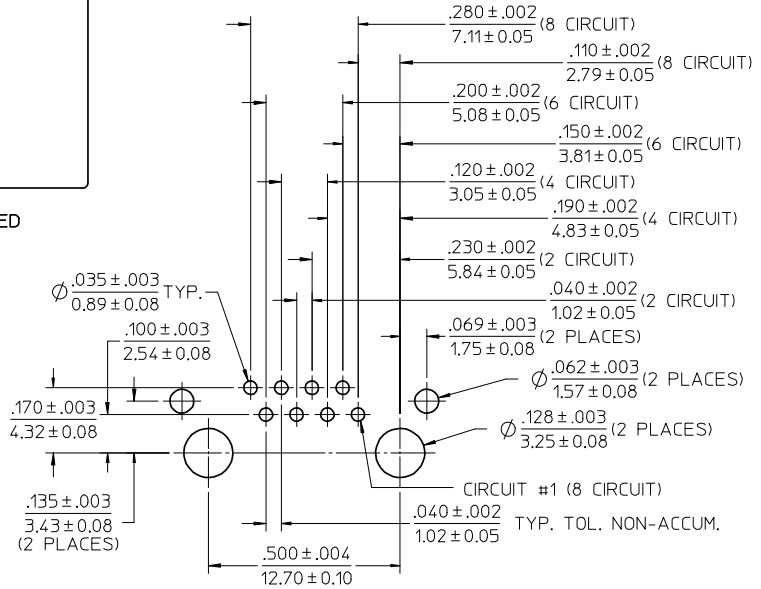
| | | |
|---|-------------------|------------------------|
| SCALE 4:1 | DESIGN UNITS INCH | THIRD ANGLE PROJECTION |
| TITLE INVERTED MODULAR JACK ASSEMBLY | | |
| MOLEX MOLEX INCORPORATED | | |
| DOCUMENT NO. SD-43860-001 | | SHEET NO. 1 OF 5 |
| THIS DRAWING CONTAINS INFORMATION THAT IS PROPRIETARY TO MOLEX INCORPORATED AND SHOULD NOT BE USED WITHOUT WRITTEN PERMISSION | | |



- NOTES:
 1) MATERIAL:
 HOUSING: NYLON(PA), GLASS FILLED, UL94V-0,
 COLOR: BLACK
 TERMINALS: PHOSPHOR BRONZE
 SHIELD: BRASS
 2) FINISH:
 TERMINALS:
 SELECT GOLD IN CONTACT AREA: 50 MICROINCHES/
 1.27 MICROMETERS MIN.
 *SELECT TIN IN PC TAIL AREA: 100 MICROINCHES/
 2.54 MICROMETERS MIN.,
 WITH OVERALL NICKEL UNDERPLATE: 50 MICROINCHES/
 1.27 MICROMETERS MIN.
 SHIELD:
 *100 MICROINCHES/2.54 MICROMETERS NICKEL OVER
 50 MICROINCHES/1.27 MICROMETERS COPPER
 UNDERPLATE, PCB GROUND TABS DIPPED IN TIN
 *THE PRIMARY SHIPPING CARTON WILL BE LABELED
 "COMPLIANT TO RoHS DIRECTIVE 2002/95/EC AND
 ELV ANNEX II OF DIRECTIVE 2000/53/EC".
 CARTONS WITHOUT THIS LABEL MAY CONTAIN
 PRODUCT WITH TIN-LEAD IN THE PC TAILS AND/OR SHIELD.
 3) PRODUCT SPECIFICATION: PS-43860-003.
 4) PACKAGING SPECIFICATION:
 CONNECTOR ASSEMBLIES PACKAGED IN THERMOFORMED TRAYS
 PER MOLEX PACKAGING SPECIFICATION PK-43860-005.
 43860-5025 CONNECTOR ASSEMBLIES PACKAGED IN TAPE AND
 REEL PER MOLEX PACKAGING SPECIFICATION PK-70873-700*
 5) ALL UNTOLERANCED DIMENSIONS ARE SHOWN FOR REFERENCE ONLY.
 6) CONFORMS TO FCC REGULATION PART 68.5 FOR MODULAR JACKS.
 7) AVAILABLE WITH THE (2) SPECIFIED PANEL GROUND TABS
 OMITTED FOR SIDE TO SIDE STACKABILITY, PER THE ASSEMBLY
 MATERIAL NUMBER TABLE.
 8) AVAILABLE WITH TOP PANEL GROUND TABS ONLY, PER THE
 ASSEMBLY MATERIAL NUMBER TABLE.
 9) THIS PART CONFORMS TO CLASS B REQUIREMENTS OF COSMETIC
 SPECIFICATION PS-45499-002.



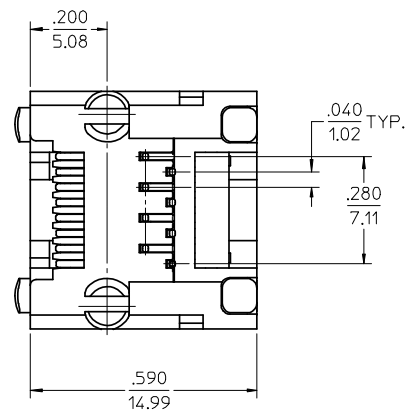
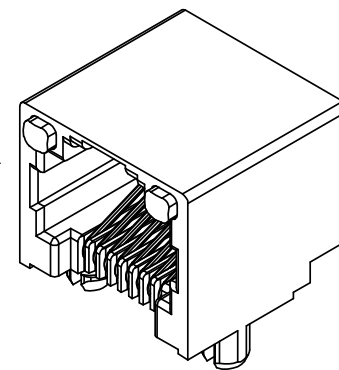
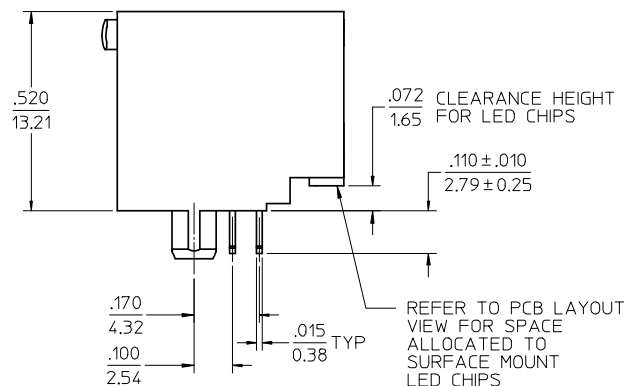
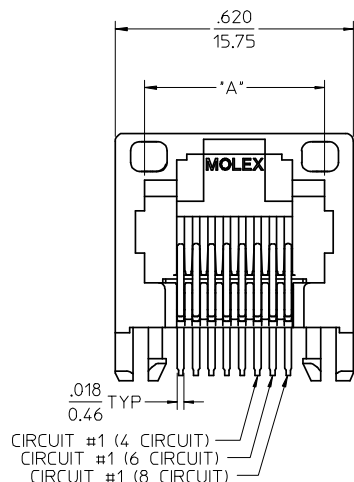
RECOMMENDED
 PANEL
 OPENING



PC BOARD LAYOUT
 COMPONENT SIDE OF BOARD
 RECOMMENDED PCB THICKNESS .062 ± .005/1.57 ± 0.13

| ASSEMBLY MAT. NUM. | CONNECTOR SIZE | DIM "A" | DIM "B" | CIRCUITS | PANEL GROUND TABS | PACKAGING OPTION |
|--------------------|----------------|------------|-----------|----------|-------------------|------------------|
| 43860-0004 | 8 | .469/11.91 | .110/2.79 | 8 | ALL | TRAY |
| 43860-2004 | 8 | .469/11.91 | .080/2.03 | 8 | ALL | TRAY |
| 43860-0005 | 6 | .389/9.88 | .110/2.79 | 6 | ALL | TRAY |
| 43860-0006 | 6 | .389/9.88 | .110/2.79 | 4 | ALL | TRAY |
| 43860-0013 | 8 | .469/11.91 | .110/2.79 | 8 | SEE NOTE #7 | TRAY |
| 43860-0014 | 6 | .389/9.88 | .110/2.79 | 6 | SEE NOTE #7 | TRAY |
| 43860-0015 | 6 | .389/9.88 | .110/2.79 | 4 | SEE NOTE #7 | TRAY |
| 43860-0024 | 6 | .389/9.88 | .110/2.79 | 2 | ALL | TRAY |
| 43860-0025 | 8 | .469/11.91 | .110/2.79 | 8 | NONE | TRAY |
| 43860-0026 | 6 | .389/9.88 | .110/2.79 | 6 | NONE | TRAY |
| 43860-0027 | 6 | .389/9.88 | .110/2.79 | 4 | NONE | TRAY |
| 43860-0031 | 8 | .469/11.91 | .110/2.79 | 8 | SEE NOTE #8 | TRAY |
| 43860-5025 | 8 | .469/11.91 | .110/2.79 | 8 | NONE | TAPE |

| | | | | | | |
|--|---|---|---|--|---|--|
| ADD 43860-5025 EC NO: UCP2008-3111 DRAWN: SCHMIDT 2008/06/20 CHKD: JEBEL 2008/06/27 APPR: FSM/TH 2008/07/14 H6 REV | QUALITY SYMBOLS ▽=0 ▽=0 | GENERAL TOLERANCES (UNLESS SPECIFIED) mm INCH 4 PLACES ± --- ± --- 3 PLACES ± --- ± .010 2 PLACES ± 0.25 ± --- 1 PLACE ± --- ± --- ANGULAR ± 1/2° | DIMENSION STYLE IN/MM DRAWN BY DATE TALEND 1997/02/13 CHECKED BY DATE ROBERTS 1997/03/03 APPROVED BY DATE FRY 1997/03/04 | SCALE 4:1 DESIGN UNITS INCH THIRD ANGLE PROJECTION | TITLE INVERTED MODULAR JACK ASSEMBLY | MATERIAL NO. SEE CHART DOCUMENT NO. SD-43860-001 SHEET NO. 2 OF 5 |
| | DRAFT WHERE APPLICABLE MUST REMAIN WITHIN DIMENSIONS | | | | | |
| | THIS DRAWING CONTAINS INFORMATION THAT IS PROPRIETARY TO MOLEX INCORPORATED AND SHOULD NOT BE USED WITHOUT WRITTEN PERMISSION | | | | | |
| | MOLEX MOLEX INCORPORATED | | | | | |

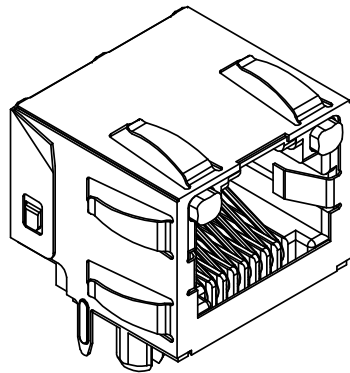


NOTES:

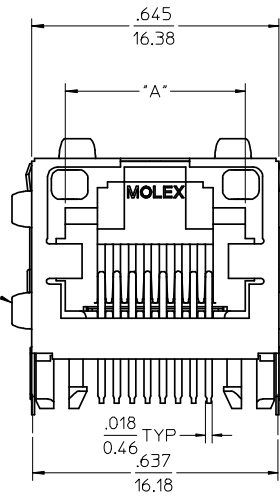
- 1) MATERIAL:
 HOUSING: NYLON(PA), GLASS FILLED, UL94V-0, COLOR: BLACK
 TERMINALS: PHOSPHOR BRONZE
 LIGHT PIPES: POLYCARBONATE - WAVE OR HAND SOLDER ONLY (NOT DESIGNED FOR I/R REFLOW OR CONVECTION REFLOW SOLDER PROCESSES)
 POLYSULFONE - MAXIMUM REFLOW TEMPERATURE 400°F (205°C)
- 2) FINISH:
 TERMINALS:
 SELECT GOLD IN CONTACT AREA: 50 MICROINCHES (1.27 MICROMETERS) MIN.,
 *SELECT TIN IN PC TAIL AREA: 100 MICROINCHES (2.54 MICROMETERS) MIN.,
 WITH OVERALL NICKEL UNDERPLATE: 50 MICROINCHES (1.27 MICROMETERS) MIN.
 *THE PRIMARY SHIPPING CARTON WILL BE LABELED "COMPLIANT TO RoHS DIRECTIVE 2002/95/EC AND ELV ANNEX II OF DIRECTIVE 2000/53/EC". CARTONS WITHOUT THIS LABEL MAY CONTAIN PRODUCT WITH TIN-LEAD IN THE PC TAILS.
- 3) PRODUCT SPECIFICATION AND PROCESSING PARAMETERS: PS-43860-003.
- 4) PACKAGING SPECIFICATION:
 CONNECTOR ASSEMBLIES PACKAGED IN EXTRUDED TUBES PER MOLEX PACKAGING SPECIFICATION PK-43860-004.
- 5) APPLICATION SPECIFICATION: AS-43860-001
- 6) ALL UNTOLERANCED DIMENSIONS ARE SHOWN FOR REFERENCE ONLY.
- 7) CONFORMS TO FCC REGULATION PART 68.5 FOR MODULAR JACKS.
- 8) REFER TO SHEET (5) OF (5) FOR RECOMMENDED PCB LAYOUT.
- 9) THIS PART CONFORMS TO CLASS B REQUIREMENTS OF COSMETIC SPECIFICATION PS-45499-002.

| ASSEMBLY MAT. NUM. | LIGHT PIPE MATERIAL | CONNECTOR SIZE | DIM "A" | CIRCUITS |
|--------------------|---------------------|----------------|------------|----------|
| 43860-0007 | POLYCARBONATE | 8 | .469/11.91 | 8 |
| 43860-0008 | POLYCARBONATE | 6 | .389/9.88 | 6 |
| 43860-0009 | POLYCARBONATE | 6 | .389/9.88 | 4 |
| 43860-0021 | POLYSULFONE | 8 | .469/11.91 | 8 |
| 43860-0022 | POLYSULFONE | 6 | .389/9.88 | 6 |
| 43860-0023 | POLYSULFONE | 6 | .389/9.88 | 4 |

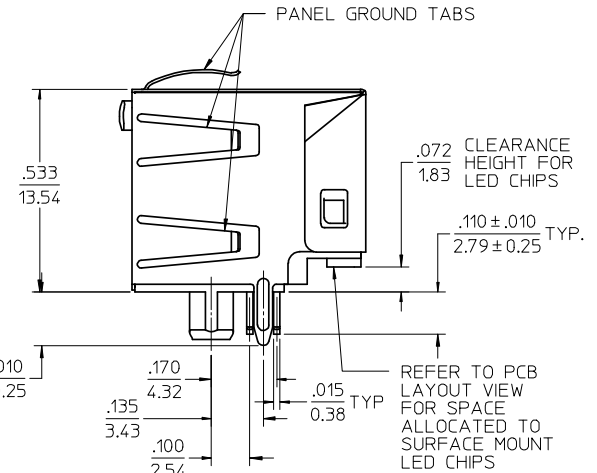
| | | | | | | | | |
|---|--|-------------------|--|---------------------------------------|--------------------------|---|------------------------------|------------------------|
| SEE SHEET 1 EC NO: UCP2008-3111 DRAWN: SCHMIDT CHKD: JEBEL APPR: FSMITH | 2008/06/20 2008/06/27 2008/07/14 | DESCRIPTION H6 | QUALITY SYMBOLS ▽=0 ▽=0 | GENERAL TOLERANCES (UNLESS SPECIFIED) | DIMENSION STYLE IN/MM | SCALE 4:1 | DESIGN UNITS INCH | THIRD ANGLE PROJECTION |
| | | | 4 PLACES ± --- ± --- | DRAWN BY TALEND | DATE 1997/02/13 | TITLE INVERTED MODULAR JACK ASSEMBLY | | |
| | | | 3 PLACES ± --- ± .010 | CHECKED BY ROBERTS | DATE 1997/03/03 | | | |
| | | | 2 PLACES ± 0.25 ± --- | APPROVED BY FRY | DATE 1997/03/04 | MOLEX MOLEX INCORPORATED | | |
| 1 PLACE ± --- ± --- | ANGULAR ± 1/2° | | DRAFT WHERE APPLICABLE MUST REMAIN WITHIN DIMENSIONS | | SEE CHART | MATERIAL NO. SD-43860-001 | DOCUMENT NO. SD-43860-001 | SHEET NO. 3 OF 5 |
| THIS DRAWING CONTAINS INFORMATION THAT IS PROPRIETARY TO MOLEX INCORPORATED AND SHOULD NOT BE USED WITHOUT WRITTEN PERMISSION | | | | | | | | |



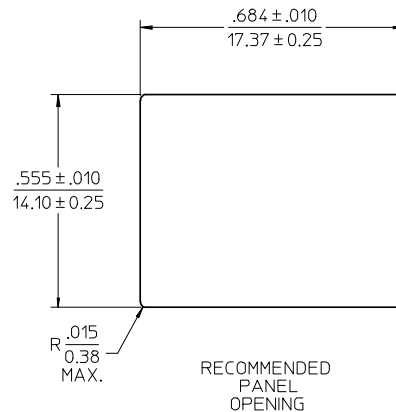
OPTIONAL PANEL GROUND TAB (SEE NOTE 8)



OPTIONAL PANEL GROUND TAB (SEE NOTE 8)



REFER TO PCB LAYOUT VIEW FOR SPACE ALLOCATED TO SURFACE MOUNT LED CHIPS



RECOMMENDED PANEL OPENING

- NOTES:
- MATERIAL: HOUSING: NYLON(PA), GLASS FILLED, UL94V-0, COLOR: BLACK
TERMINALS: PHOSPHOR BRONZE
SHIELD: BRASS
LIGHT PIPES: POLYCARBONATE - WAVE OR HAND SOLDER ONLY (NOT DESIGNED FOR I/R REFLOW OR CONVECTION REFLOW SOLDER PROCESSES), POLYSULFONE - MAXIMUM REFLOW TEMPERATURE 400° F (205° C)
 - FINISH: TERMINALS: SELECT GOLD IN CONTACT AREA: 50 MICROINCHES/1.27 MICROMETERS MIN., SELECT TIN IN PC TAIL AREA: 100 MICROINCHES/2.54 MICROMETERS MIN., WITH OVERALL NICKEL UNDERPLATE: 50 MICROINCHES/1.27 MICROMETERS MIN. SHIELD: *100 MICROINCHES/2.54 MICROMETERS OVER 50 MICROINCHES/1.27 MICROMETERS COPPER UNDERPLATE, PCB GROUND TABS DIPPED IN TIN *THE PRIMARY SHIPPING CARTON WILL BE LABELED 'COMPLIANT TO RoHS DIRECTIVE 2002/95/EC AND ELV ANNEX II OF DIRECTIVE 2000/53/EC'. CARTONS WITHOUT THIS LABEL MAY CONTAIN PRODUCT WITH TIN-LEAD IN THE PC TAILS AND/OR SHIELD.
 - PRODUCT SPECIFICATION AND PROCESSING PARAMETERS: PS-43860-003.
 - PACKAGING SPECIFICATION: CONNECTOR ASSEMBLIES PACKAGED IN THERMOFORMED TRAYS PER MOLEX PACKAGING SPECIFICATION PK-43860-005.
 - APPLICATION SPECIFICATION: AS-43860-001
 - ALL UNTOLERANCED DIMENSIONS ARE SHOWN FOR REFERENCE ONLY.
 - CONFORMS TO FCC REGULATION PART 68.5 FOR MODULAR JACKS.
 - AVAILABLE WITH THE (2) SPECIFIED PANEL GROUND TABS OMITTED FOR SIDE TO SIDE STACKABILITY, PER THE ASSEMBLY MATERIAL NUMBER TABLE.
 - REFER TO SHEET (5) OF (5) FOR RECOMMENDED PCB LAYOUT.
 - THIS PART CONFORMS TO CLASS B REQUIREMENTS OF COSMETIC SPECIFICATION PS-45499-002.

| ASSEMBLY MAT. NUM. | LIGHT PIPE MATERIAL | CONNECTOR SIZE | DIM "A" | CIRCUITS | PANEL GROUND TABS |
|--------------------|---------------------|----------------|------------|----------|-------------------|
| 43860-0010 | POLYCARBONATE | 8 | .469/11.91 | 8 | ALL |
| 43860-0011 | POLYCARBONATE | 6 | .389/9.88 | 6 | ALL |
| 43860-0012 | POLYCARBONATE | 6 | .389/9.88 | 4 | ALL |
| 43860-0016 | POLYCARBONATE | 8 | .469/11.91 | 8 | SEE NOTE #8 |
| 43860-0017 | POLYCARBONATE | 6 | .389/9.88 | 6 | SEE NOTE #8 |
| 43860-0018 | POLYCARBONATE | 6 | .389/9.88 | 4 | SEE NOTE #8 |
| 43860-1010 | POLYSULFONE | 8 | .469/11.91 | 8 | ALL |
| 43860-1011 | POLYSULFONE | 6 | .389/9.88 | 6 | ALL |
| 43860-1012 | POLYSULFONE | 6 | .389/9.88 | 4 | ALL |
| 43860-1016 | POLYSULFONE | 8 | .469/11.91 | 8 | SEE NOTE #8 |
| 43860-1017 | POLYSULFONE | 6 | .389/9.88 | 6 | SEE NOTE #8 |
| 43860-1018 | POLYSULFONE | 6 | .389/9.88 | 4 | SEE NOTE #8 |

| SEE SHEET 1 EC NO: UCP2008-3111 DRAWN: SCHMIDT 2008/06/20 CHKD: JEBEL 2008/06/27 APPR: FSM/TH 2008/07/14 | QUALITY SYMBOLS ▽=0 ▽=0 | GENERAL TOLERANCES (UNLESS SPECIFIED) <table border="1"> <tr> <th></th> <th>mm</th> <th>INCH</th> </tr> <tr> <td>4 PLACES ±</td> <td>---</td> <td>±---</td> </tr> <tr> <td>3 PLACES ±</td> <td>---</td> <td>±.010</td> </tr> <tr> <td>2 PLACES ±</td> <td>0.25</td> <td>±---</td> </tr> <tr> <td>1 PLACE ±</td> <td>---</td> <td>±---</td> </tr> </table> | | mm | INCH | 4 PLACES ± | --- | ±--- | 3 PLACES ± | --- | ±.010 | 2 PLACES ± | 0.25 | ±--- | 1 PLACE ± | --- | ±--- | DIMENSION STYLE IN/MM | SCALE 4:1 | DESIGN UNITS INCH | THIRD ANGLE PROJECTION |
|--|-------------------------------|--|-------------------------------------|----------------------------|--------------------|---|-----|------|------------|-----|-------|------------|------|------|-----------|-----|------|--------------------------|--------------|----------------------|------------------------|
| | | | | mm | INCH | | | | | | | | | | | | | | | | |
| 4 PLACES ± | --- | ±--- | | | | | | | | | | | | | | | | | | | |
| 3 PLACES ± | --- | ±.010 | | | | | | | | | | | | | | | | | | | |
| 2 PLACES ± | 0.25 | ±--- | | | | | | | | | | | | | | | | | | | |
| 1 PLACE ± | --- | ±--- | | | | | | | | | | | | | | | | | | | |
| DRAWN BY TALEND | DATE 1997/02/13 | CHECKED BY ROBERTS | DATE 1997/03/03 | APPROVED BY FRY | DATE 1997/03/04 | TITLE INVERTED MODULAR JACK ASSEMBLY | | | | | | | | | | | | | | | |
| DRAFT WHERE APPLICABLE MUST REMAIN WITHIN DIMENSIONS | | MATERIAL NO. SEE CHART | DOCUMENT NO. SD-43860-001 | SHEET NO. 4 OF 5 | | THIS DRAWING CONTAINS INFORMATION THAT IS PROPRIETARY TO MOLEX INCORPORATED AND SHOULD NOT BE USED WITHOUT WRITTEN PERMISSION | | | | | | | | | | | | | | | |

