

PLEASE CHECK WWW.MOLEX.COM FOR LATEST PART INFORMATION

Part Number: [0010441123](#)
Status: **Active**
Overview: [kk](#)
Description: 5.08mm (.200") Pitch KK® Header, Vertical, with Polarizing Backwall, 12 Circuits, Gold (Au) Plating

Documents:

[3D Model](#) [RoHS Certificate of Compliance \(PDF\)](#)
[Drawing \(PDF\)](#)

General

| | |
|----------------|----------------------|
| Product Family | PCB Headers |
| Series | 2599 |
| Application | Wire-to-Board |
| Overview | kk |
| Product Name | KK® |

Physical

| | |
|--------------------------------|--------------|
| Breakaway | No |
| Circuits (Loaded) | 12 |
| Circuits (maximum) | 12 |
| Color - Resin | Natural |
| Durability (mating cycles max) | 50 |
| First Mate / Last Break | No |
| Glow-Wire Compliant | No |
| Guide to Mating Part | No |
| Keying to Mating Part | None |
| Lock to Mating Part | None |
| Material - Metal | Brass |
| Material - Plating Mating | Gold |
| Material - Plating Termination | Nickel |
| Material - Resin | Nylon |
| Number of Rows | 1 |
| Orientation | Vertical |
| PC Tail Length (in) | 0.175 In |
| PC Tail Length (mm) | 4.45 mm |
| PCB Retention | None |
| PCB Thickness Recommended (in) | 0.062 In |
| PCB Thickness Recommended (mm) | 1.60 mm |
| Packaging Type | Bag |
| Pitch - Mating Interface (in) | 0.200 In |
| Pitch - Mating Interface (mm) | 5.08 mm |
| Shrouded | Partial |
| Stackable | Yes |
| Surface Mount Compatible (SMC) | No |
| Temperature Range - Operating | 0°C to +75°C |
| Termination Interface: Style | Through Hole |

Electrical

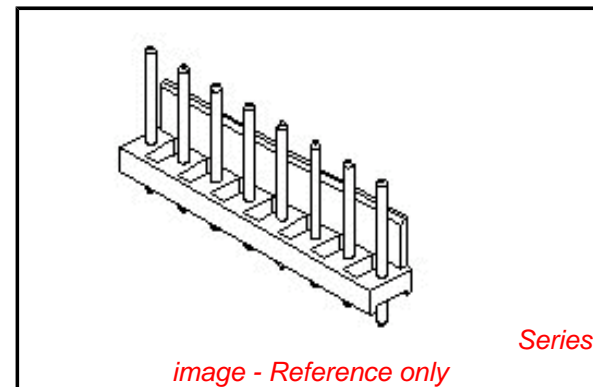
| | |
|-------------------------------|------|
| Current - Maximum per Contact | 7A |
| Voltage - Maximum | 250V |

Material Info

| | |
|-----------------|-----------|
| Old Part Number | 2599-12BG |
|-----------------|-----------|

Reference - Drawing Numbers

| | |
|---------------|--------------|
| Sales Drawing | SDA-2599-NBG |
|---------------|--------------|



EU RoHS **China RoHS**

Compliance Status

Not Reviewed

REACH SVHC

Not Reviewed

Halogen-Free

Status

Not Reviewed

Need more information on product environmental compliance?

Email productcompliance@molex.com
 For a multiple part number RoHS Certificate of Compliance, [click here](#)

Please visit the [Contact Us](#) section for any non-product compliance questions.

Search Parts in this Series

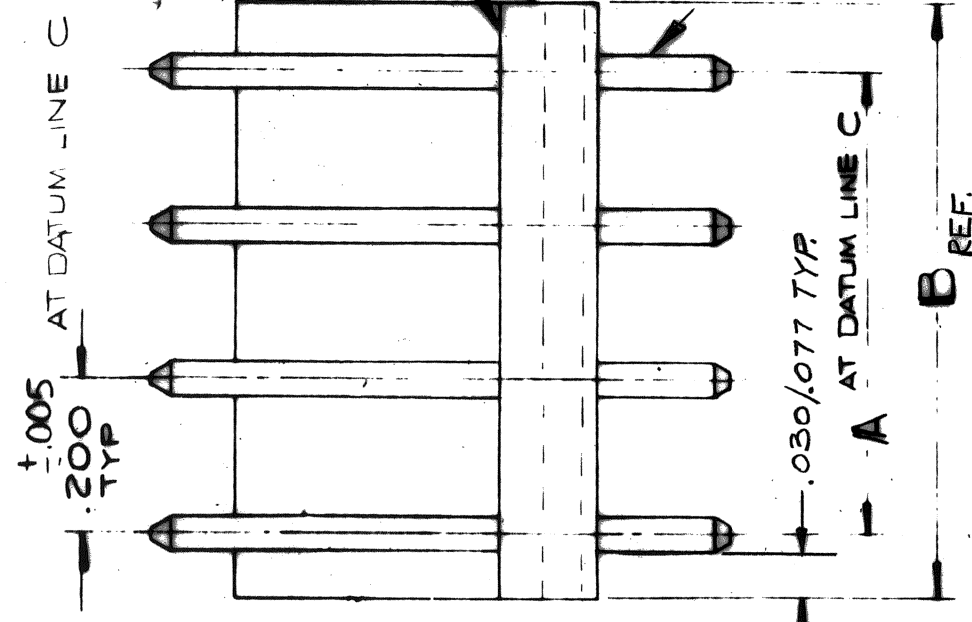
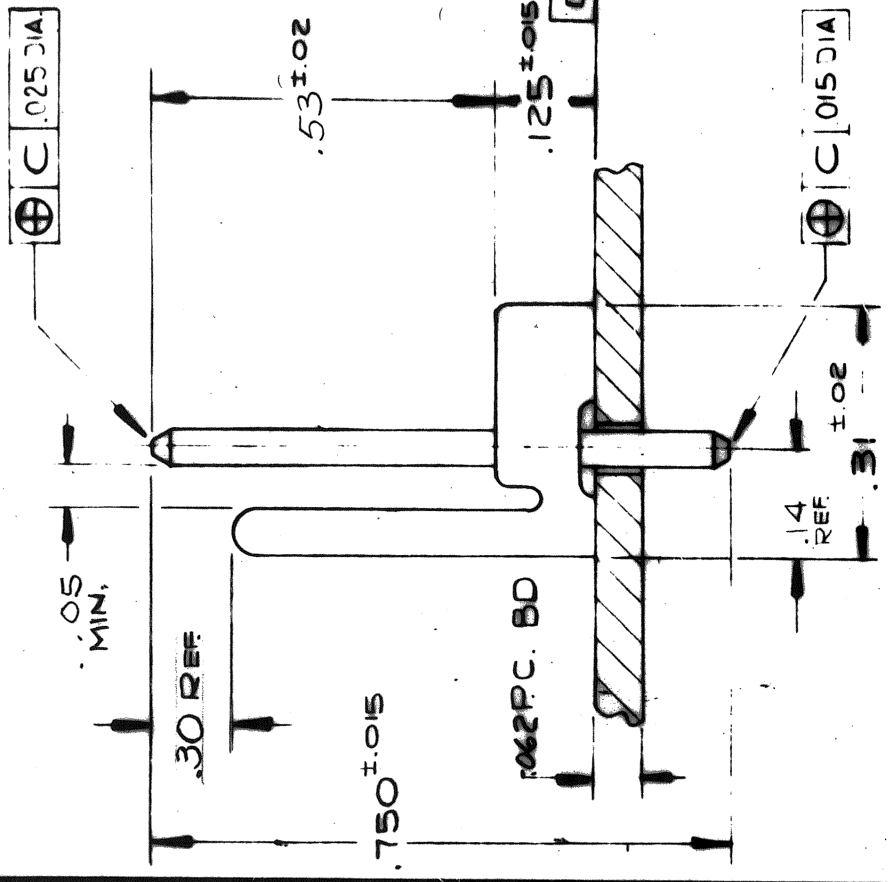
[2599Series](#)

Mates With

KK® Crimp Terminal Housing [3001](#) , [5058](#)

This document was generated on 05/24/2010

PLEASE CHECK WWW.MOLEX.COM FOR LATEST PART INFORMATION

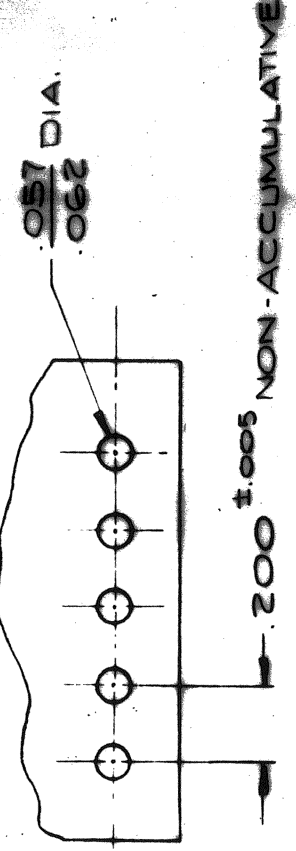


SEE CHART
PART NO.
A-2599-NBG

SEE NOTE 1

SLIGHT SAW BURR PERMITTED
ON TOP & SIDE EDGES - BOTH ENDS

.045 DIA BRASS PIN
.000030/.000020 GOLD
OVER .000040/.000030 NICKEL.



RECOMMENDED P.C. BOARD
HOLE DIMENSIONS

| NOT TOOLED | A-2599-18BG | 18 | 34.00±.009 | 3.608/3.496 |
|------------|-------------|----------------|------------|-------------|
| | -17 | 17 | 3.200±.009 | 3.408/3.296 |
| | -16 | 16 | 3.000±.008 | 3.207/3.097 |
| | -15 | 15 | 2.800±.008 | 3.007/2.897 |
| | -14 | 14 | 2.600±.008 | 2.807/2.697 |
| NOT TOOLED | -13 | 13 | 2.400±.007 | 2.606/2.498 |
| 10-44-1123 | -12 | 12 | 2.200±.007 | 2.406/2.298 |
| NOT TOOLED | -11 | 11 | 2.000±.007 | 2.206/2.098 |
| | -10 | 10 | 1.800±.006 | 2.005/1.899 |
| | -9 | 9 | 1.600±.006 | 1.805/1.699 |
| | -8 | 8 | 1.400±.005 | 1.604/1.500 |
| | -7 | 7 | 1.200±.005 | 1.404/1.300 |
| | -6 | 6 | 1.000±.005 | 1.204/1.100 |
| | -5 | 5 | 800±.004 | 1.003/1.901 |
| | -4 | 4 | 600±.004 | 803/701 |
| | -3 | 3 | 400±.003 | 602/502 |
| NOT TOOLED | A-2599-28G | 2 | 200±.003 | 402/302 |
| PART NO. | ENG NO. | NO OF CIRCUITS | DIM. A | DIM. B |

- NOTES:
- PIN PUSH OUT FORCE: 3 LBS. MIN.
 - BURRS NOT TO EXTEND BELOW SURFACE D
 - PRODUCT MUST COMPLY TO MOLEX SOLDERABILITY SPEC. NO 152.
 - THIS PART CONFORMS TO MOLEX PROD. SPEC. 10-39.

WAFER MATERIAL: NYLON 6/6 94V-2

.200 CENTER DIST.

FILED

| REV | DATE | BY | DESCRIPTION |
|-----|--------|-----|-------------|
| 1 | 8-1-80 | JMR | 8-1-80 JMR |
| 2 | | | 8-1-80 JMR |
| 3 | | | 8-1-80 JMR |
| 4 | | | 8-1-80 JMR |
| 5 | | | 8-1-80 JMR |
| 6 | | | 8-1-80 JMR |
| 7 | | | 8-1-80 JMR |
| 8 | | | 8-1-80 JMR |
| 9 | | | 8-1-80 JMR |
| 10 | | | 8-1-80 JMR |
| 11 | | | 8-1-80 JMR |
| 12 | | | 8-1-80 JMR |
| 13 | | | 8-1-80 JMR |
| 14 | | | 8-1-80 JMR |
| 15 | | | 8-1-80 JMR |
| 16 | | | 8-1-80 JMR |
| 17 | | | 8-1-80 JMR |
| 18 | | | 8-1-80 JMR |
| 19 | | | 8-1-80 JMR |
| 20 | | | 8-1-80 JMR |
| 21 | | | 8-1-80 JMR |
| 22 | | | 8-1-80 JMR |
| 23 | | | 8-1-80 JMR |
| 24 | | | 8-1-80 JMR |
| 25 | | | 8-1-80 JMR |
| 26 | | | 8-1-80 JMR |
| 27 | | | 8-1-80 JMR |
| 28 | | | 8-1-80 JMR |
| 29 | | | 8-1-80 JMR |
| 30 | | | 8-1-80 JMR |
| 31 | | | 8-1-80 JMR |
| 32 | | | 8-1-80 JMR |
| 33 | | | 8-1-80 JMR |
| 34 | | | 8-1-80 JMR |
| 35 | | | 8-1-80 JMR |
| 36 | | | 8-1-80 JMR |
| 37 | | | 8-1-80 JMR |
| 38 | | | 8-1-80 JMR |
| 39 | | | 8-1-80 JMR |
| 40 | | | 8-1-80 JMR |
| 41 | | | 8-1-80 JMR |
| 42 | | | 8-1-80 JMR |
| 43 | | | 8-1-80 JMR |
| 44 | | | 8-1-80 JMR |
| 45 | | | 8-1-80 JMR |
| 46 | | | 8-1-80 JMR |
| 47 | | | 8-1-80 JMR |
| 48 | | | 8-1-80 JMR |
| 49 | | | 8-1-80 JMR |
| 50 | | | 8-1-80 JMR |
| 51 | | | 8-1-80 JMR |
| 52 | | | 8-1-80 JMR |
| 53 | | | 8-1-80 JMR |
| 54 | | | 8-1-80 JMR |
| 55 | | | 8-1-80 JMR |
| 56 | | | 8-1-80 JMR |
| 57 | | | 8-1-80 JMR |
| 58 | | | 8-1-80 JMR |
| 59 | | | 8-1-80 JMR |
| 60 | | | 8-1-80 JMR |
| 61 | | | 8-1-80 JMR |
| 62 | | | 8-1-80 JMR |
| 63 | | | 8-1-80 JMR |
| 64 | | | 8-1-80 JMR |
| 65 | | | 8-1-80 JMR |
| 66 | | | 8-1-80 JMR |
| 67 | | | 8-1-80 JMR |
| 68 | | | 8-1-80 JMR |
| 69 | | | 8-1-80 JMR |
| 70 | | | 8-1-80 JMR |
| 71 | | | 8-1-80 JMR |
| 72 | | | 8-1-80 JMR |
| 73 | | | 8-1-80 JMR |
| 74 | | | 8-1-80 JMR |
| 75 | | | 8-1-80 JMR |
| 76 | | | 8-1-80 JMR |
| 77 | | | 8-1-80 JMR |
| 78 | | | 8-1-80 JMR |
| 79 | | | 8-1-80 JMR |
| 80 | | | 8-1-80 JMR |
| 81 | | | 8-1-80 JMR |
| 82 | | | 8-1-80 JMR |
| 83 | | | 8-1-80 JMR |
| 84 | | | 8-1-80 JMR |
| 85 | | | 8-1-80 JMR |
| 86 | | | 8-1-80 JMR |
| 87 | | | 8-1-80 JMR |
| 88 | | | 8-1-80 JMR |
| 89 | | | 8-1-80 JMR |
| 90 | | | 8-1-80 JMR |
| 91 | | | 8-1-80 JMR |
| 92 | | | 8-1-80 JMR |
| 93 | | | 8-1-80 JMR |
| 94 | | | 8-1-80 JMR |
| 95 | | | 8-1-80 JMR |
| 96 | | | 8-1-80 JMR |
| 97 | | | 8-1-80 JMR |
| 98 | | | 8-1-80 JMR |
| 99 | | | 8-1-80 JMR |
| 100 | | | 8-1-80 JMR |

POLARIZING WAFER ASSEMBLY
MOLEX PRODUCTS CO.
BATH

8-1-80

MOLEX SDA - 2599-NBG