

PLEASE CHECK WWW.MOLEX.COM FOR LATEST PART INFORMATION

Part Number: [0355191601](#)
Status: **Active**
Description: 2.29/6.35mm (.090/.250") Tab Hybrid Wire-to-Wire Housing, Female, 16 Circuits

Documents:

[Drawing \(PDF\)](#) [RoHS Certificate of Compliance \(PDF\)](#)
[Product Specification PS-35519-001 \(PDF\)](#)

General

Product Family	Crimp Housings
Series	35519
Comments	With option #1 polarization
Product Name	N/A

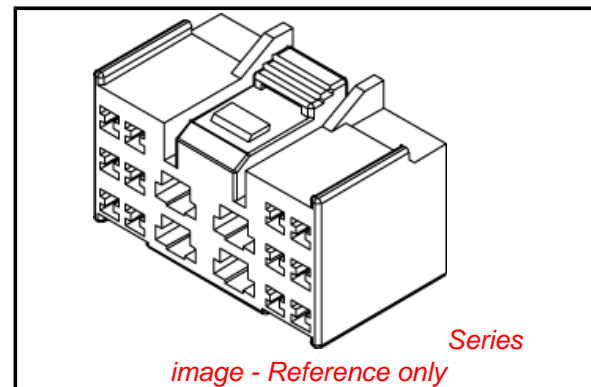
Physical

Circuits (maximum)	16
Color - Resin	Black
Gender	Female
Glow-Wire Compliant	No
Material - Resin	Polyester
Number of Rows	3
Packaging Type	Bag
Panel Mount	No
Pitch - Mating Interface (in)	0.165 In, 0.374 In
Pitch - Mating Interface (mm)	4.20 mm, 9.50 mm
Temperature Range - Operating	-40°C to +120°C

Material Info

Reference - Drawing Numbers

Product Specification	PS-35519-001
Sales Drawing	SD-35519-160*



EU RoHS

**ELV and RoHS
Compliant**
REACH SVHC
 Not Reviewed
**Halogen-Free
Status**

China RoHS



**Need more information on product
environmental compliance?**

Email productcompliance@molex.com
 For a multiple part number RoHS Certificate of Compliance, [click here](#)

Please visit the [Contact Us](#) section for any non-product compliance questions.

Search Parts in this Series

[35519Series](#)

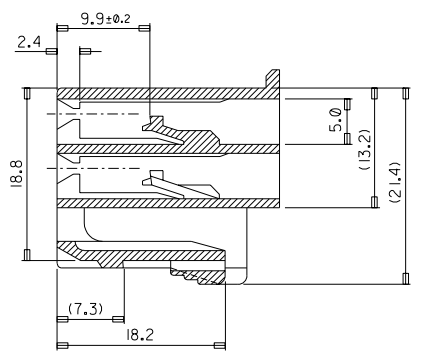
Mates With

[35522|35523](#)

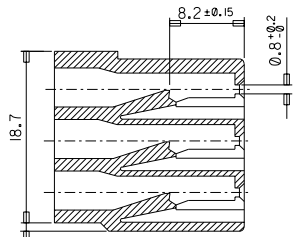
Use With

[35407](#) , [35427](#)

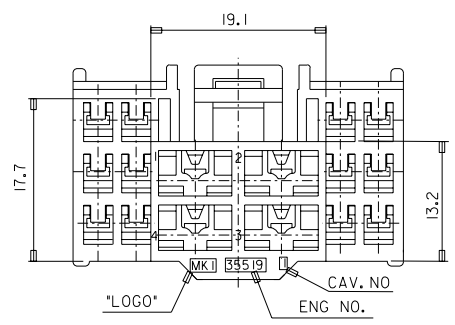
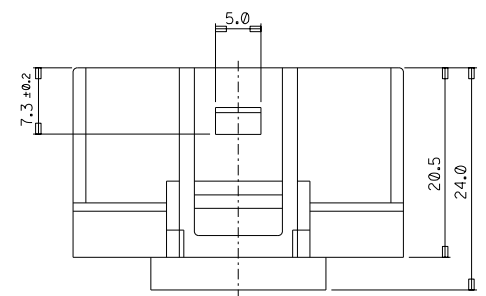
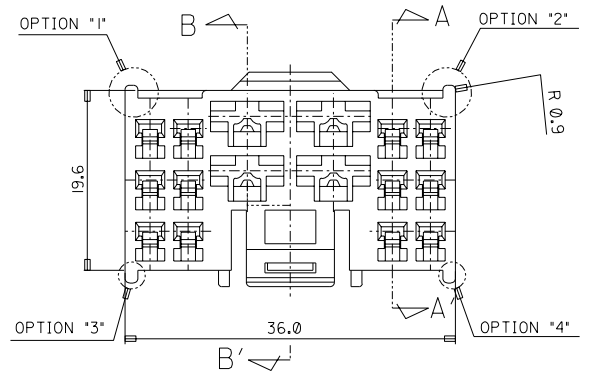
DWG. NO. SD 35519-160*
 PROJECT NO. KOR 96-038
 SIMILAR ITEM
 DO NOT SCALE DRAWING DIMENSION IN METRIC



SECTION B-B'

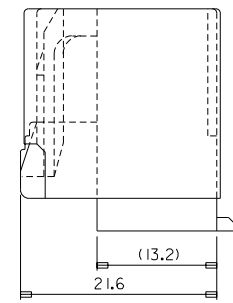


SECTION A-A'



*TABLE 1

PART NO.	COLOR	REMARKS
E 35519-1600	NATERAL	WITH OPTION "2"
E 35519-1601	BLACK	WITH OPTION "1"
E 35519-1603	YELLOW	WITH OPTION "4"
E 35519-1605	GRAY	WITH OPTION "3"



- NOTE
- MATERIAL : POLYESTER (P.B.T)
 - COLOR : SEE TABLE 1.
 - APPLICABLE TERMINAL : 35407-6*02/
35427-9***
 - APPLICABLE HOUSING : 35522-240*/35523-160*.
 - PRODUCT SPECIFICATION : PS-35519-0001.

REVISED EC NO. KOR 1998-0116 DRAWN: C.Y.CHO CHK: B.K.CHOI APPR: C.W.LEE	DESCRIPTION MAJOR CRITICAL C	QUALITY SYMBOLS	GENERAL TOLERANCES: (UNLESS SPECIFIED) <table border="1"> <tr> <td></td> <td>mm</td> <td>INCH</td> </tr> <tr> <td>4 PLACES</td> <td>±0.</td> <td>±.</td> </tr> <tr> <td>3 PLACES</td> <td>±0.</td> <td>±.</td> </tr> <tr> <td>2 PLACES</td> <td>±0.20</td> <td>±.</td> </tr> <tr> <td>1 PLACE</td> <td>±0.30</td> <td>±.</td> </tr> </table>		mm	INCH	4 PLACES	±0.	±.	3 PLACES	±0.	±.	2 PLACES	±0.20	±.	1 PLACE	±0.30	±.	SCALE DESIGN UNITS <input checked="" type="checkbox"/> mm <input type="checkbox"/> INCH	DRAWN BY & DATE C.Y.CHO 1998.05.15	CHECKED BY & DATE B.K.CHOI 1998.05.15	APPROVED BY & DATE C.W.LEE 1998.05.15	THIRD ANGLE PROJECTION <input type="checkbox"/> mm <input type="checkbox"/> INCH <input checked="" type="checkbox"/> mm ONLY	DIMENSIONS:	SHT REV
					mm	INCH																			
4 PLACES	±0.	±.																							
3 PLACES	±0.	±.																							
2 PLACES	±0.20	±.																							
1 PLACE	±0.30	±.																							
CAD FILENAME SD35519.DGN	MATERIAL NO. SD 35519-160*	DRAWING NO. SD 35519-160*	SHEET NO. 1/1																						
TITLE: 090/250 HYBRID FEMALE HOUSING (16P)						MOLEX INCORPORATED KOREA			DRAFT WHERE APPLICABLE MUST REMAIN WITHIN DIMENSIONS																
THIS DRAWING CONTAINS INFORMATION THAT IS PROPRIETARY TO MOLEX INCORPORATED AND SHOULD NOT BE USED WITHOUT WRITTEN PERMISSION.									SIZE B																