

**PLEASE CHECK WWW.MOLEX.COM FOR LATEST PART INFORMATION**

**Part Number:** [0783670001](#)  
**Status:** **Active**  
**Description:** 1.27mm (.050") Signal Pitch, 0.80mm (.031") SCSI Pitch, 1.27mm (.050") Power Pitch SAS Extended Height Receptacle, SMT, Vertical, with Pegs and Solder Tabs, 15.85mm (.624") Mounted Height, 29 Circuits, Tray, Leadfree

**Documents:**

[3D Model](#) [Product Specification PS-78367-001 \(PDF\)](#)  
[Drawing \(PDF\)](#) [RoHS Certificate of Compliance \(PDF\)](#)

**Agency Certification**

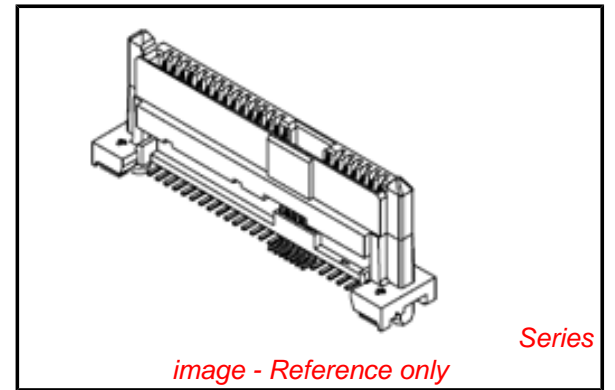
CSA LR19980  
 UL E29179

**General**

Product Family I/O Connectors  
 Series [78367](#)  
 Application Board-to-Board  
 Comments No pick and place cap  
 Component Type Receptacle  
 Product Name SAS  
 Type N/A

**Physical**

Boot Color N/A  
 Circuits (Loaded) 29  
 Circuits (maximum) 29  
 Circuits Detail Signal 7, SCSI 7, Power 15  
 Color - Resin Black  
 Durability (mating cycles max) 500  
 Flammability 94V-0  
 Gender Female  
 Keying to Mating Part Yes  
 Lock to Mating Part None  
 Material - Metal Copper Alloy  
 Material - Plating Mating Gold  
 Material - Plating Termination Tin  
 Material - Resin High Temperature Thermoplastic  
 Number of Rows 2  
 Orientation Vertical  
 PCB Locator Yes  
 PCB Retention Yes  
 PCB Thickness Recommended (in) 0.100 In  
 PCB Thickness Recommended (mm) 2.54 mm  
 Packaging Type Tray  
 Panel Mount Yes  
 Pitch - Mating Interface (in) 0.031 In, 0.050 In  
 Pitch - Mating Interface (mm) 0.80 mm, 1.27 mm  
 Pitch - Term. Interface (in) 0.031 In, 0.050 In  
 Pitch - Term. Interface (mm) 0.80 mm, 1.27 mm  
 Plating min: Mating (µin) 30  
 Plating min: Mating (µm) 0.76  
 Plating min: Termination (µin) 102  
 Plating min: Termination (µm) 2.54  
 Polarized to Mating Part Yes  
 Polarized to PCB Yes



**EU RoHS**

**ELV and RoHS  
 Compliant**  
**REACH SVHC  
 Contains SVHC: No**  
**Halogen-Free  
 Status**

**China RoHS**



**Need more information on product  
 environmental compliance?**

Email [productcompliance@molex.com](mailto:productcompliance@molex.com)  
 For a multiple part number RoHS Certificate of Compliance, [click here](#)

Please visit the [Contact Us](#) section for any non-product compliance questions.

**Search Parts in this Series**

[78367Series](#)

**Mates With**

SFF-8482 Hard Disk Drive and Backplane Plug. [87679](#) Serial ATA Device Plug with Latch. [87703](#) Serial ATA Device Plug without Jumper. [87799](#) Serial ATA Device Plug with Jumper

Surface Mount Compatible (SMC)	N/A
Temperature Range - Operating	0°C to +55°C
Termination Interface: Style	Surface Mount
Waterproof / Dustproof	No
Wire Size AWG	N/A

### **Electrical**

Current - Maximum per Contact	1.5A
Shielded	No
Voltage - Maximum	30V

### **Solder Process Data**

Duration at Max. Process Temperature (seconds)	3
Lead-free Process Capability	Reflow Capable (SMT only)
Max. Cycles at Max. Process Temperature	1
Process Temperature max. C	260

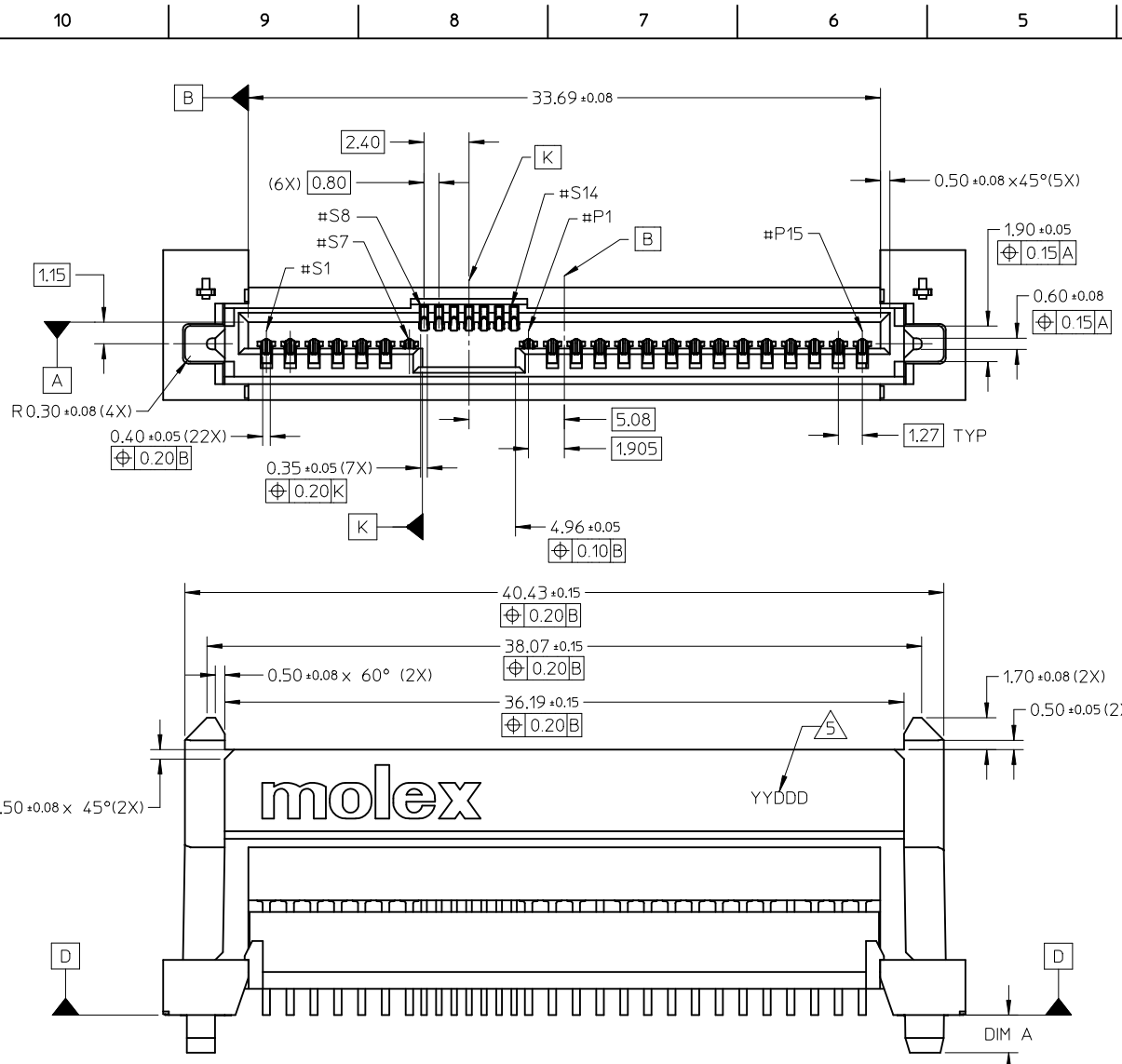
### **Material Info**

#### **Reference - Drawing Numbers**

Packaging Specification	PK-78367-002
Product Specification	PS-78367-001
Sales Drawing	SD-78367-001

This document was generated on 04/27/2010

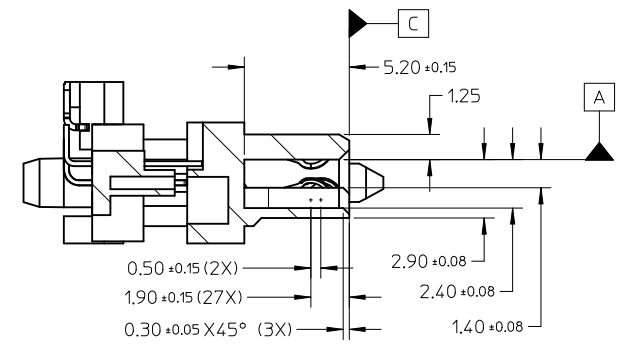
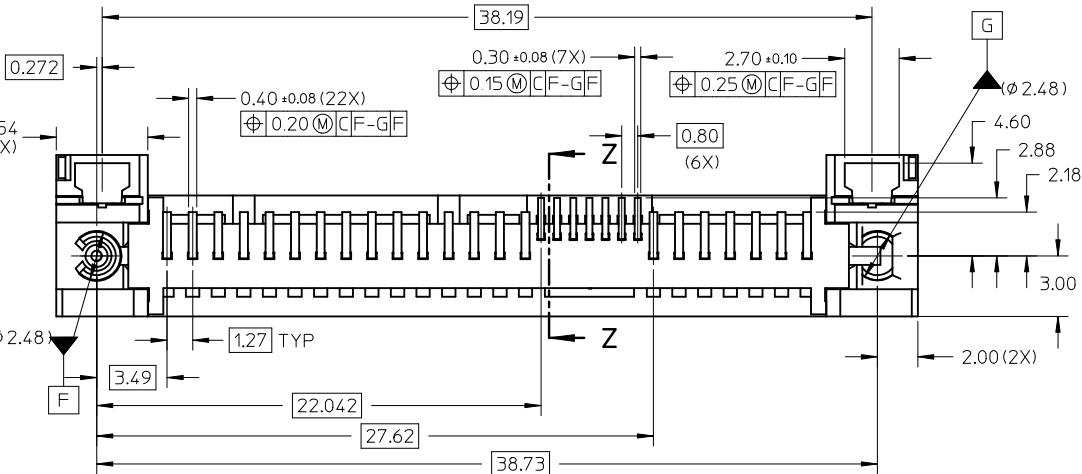
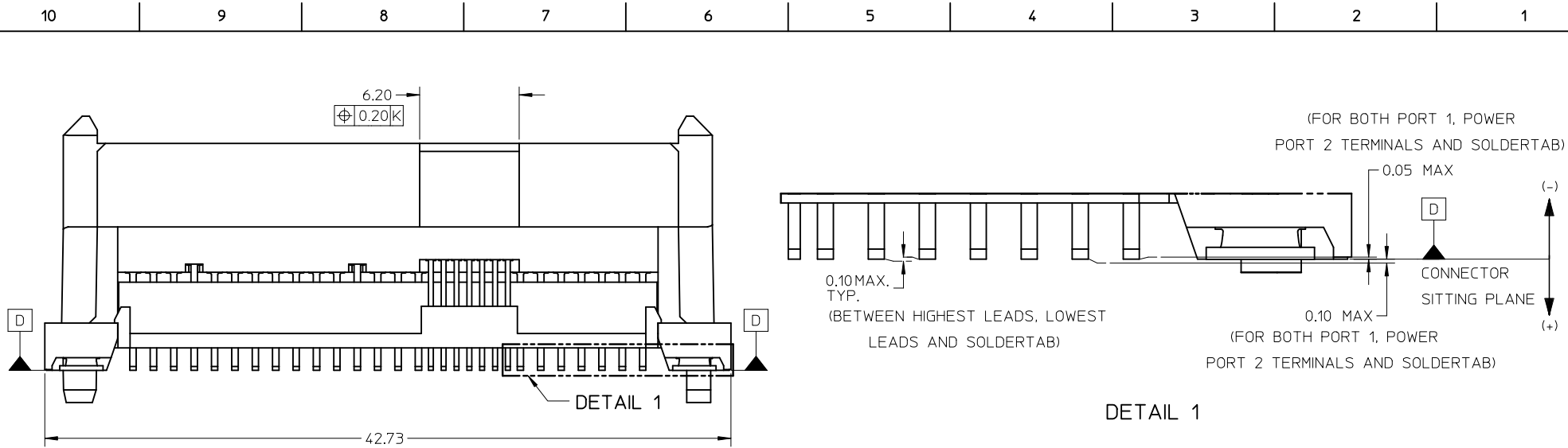
**PLEASE CHECK [WWW.MOLEX.COM](http://WWW.MOLEX.COM) FOR LATEST PART INFORMATION**



- NOTES:
- MATERIAL: LIQUID CRYSTALLINE POLYMER (LCP), GLASS FILLED, UL 94V-0, COLOR: BLACK.  
 TERMINAL & SOLERTAB: COPPER ALLOY  
 PICK & PLACE CAP: PA46, UL 94V-0, COLOR: BLACK.
  - PLATING:  
 CONTACT: 0.76µm MIN. SELECTIVE GOLD OVER 1.27µm MIN.  
 NICKEL UNDERPLATE  
 SOLDER TAIL: 2.54µm MIN. TIN OVER 1.27µm MIN. NICKEL UNDERPLATE  
 SOLDER TAB: 2.54µm MIN. TIN OVER 1.91µm MIN. NICKEL UNDERPLATE.
  - MOLEX LOGO LOCATED APPROXIMATELY AS SHOWN
  - PACKAGING: REFER TO ATTACHED
  - DATE CODE TO BE LOCATED APPROXIMATELY AS SHOWN.
  - PRODUCT IS COMPLIANT TO RoHS DIRECTIVE WITH THE FOLLOWING BANNED SUBSTANCES - LEAD, MERCURY, CADMIUM, HEXAVALENT CHROMIUM, POLYBROMINATED BIPHENYLS AND POLYBROMINATED DIPHENYL ETHERS.
  - PRODUCT SPECIFICATION PS-78367-001 APPLIES.
  - MATES WITH: SFF-8482 PLUG  
 SATA PLUG SERIES: 87679, 87703, 87799.
  - NON-FUNCTIONAL CORING MAY VARY.

PART NUMBER	DIM A	PACKAGING
78367-0001	2.00	TRAY
78367-0003	1.00	TRAY
78367-0005	2.00	TAPE & REEL
78367-0006	1.00	TAPE & REEL

CHANGE TAPE WIDTH EC NO: S2010-0654 DRWN: JYAP 2010/02/03 CHKD: YKOH 2008/02/18 APPR: BOKOK 2010/02/20	QUALITY SYMBOLS F <sub>A</sub> =0 F <sub>C</sub> =0 F <sub>P</sub> =0	GENERAL TOLERANCES (UNLESS SPECIFIED)		DIMENSION STYLE	SCALE	DESIGN UNITS	THIRD ANGLE PROJECTION
		mm	INCH	MM ONLY	NTS	METRIC	
A3		4 PLACES	± ---	± ---	DRAWN BY	DATE	TITLE
		3 PLACES	± ---	± ---	BOKOK	2008/02/01	SAS RECEPTACLE EXTENDED HEIGHT, SMT WITH SOLDER TAB
		2 PLACES	± 0.20	± ---	CHECKED BY	DATE	MOLEX INCORPORATED
		1 PLACE	± ---	± ---	YKOH	2008/02/18	
		ANGULAR ± 3 °		APPROVED BY	DATE	MATERIAL NO.	DOCUMENT NO.
DRAFT WHERE APPLICABLE MUST REMAIN WITHIN DIMENSIONS		SEE TABLE		BOKOK	2010/02/19	SD-78367-001	1 OF 5
THIS DRAWING CONTAINS INFORMATION THAT IS PROPRIETARY TO MOLEX INCORPORATED AND SHOULD NOT BE USED WITHOUT WRITTEN PERMISSION							



DETAIL 1

SECTION Z-Z

CHANGE TAPE WIDTH EC NO: S2010-0654 DRWN:WJAP 2010/02/03 CHKD:YKOH 2008/02/18 APPR:BOKOK 2010/02/20	DESCRIPTION A3	QUALITY SYMBOLS	GENERAL TOLERANCES (UNLESS SPECIFIED)	DIMENSION STYLE	SCALE	DESIGN UNITS	THIRD ANGLE PROJECTION															
		$\nabla_A = 0$ $\nabla_C = 0$ $\nabla_B = 0$	<table border="1"> <thead> <tr> <th></th> <th>mm</th> <th>INCH</th> </tr> </thead> <tbody> <tr> <td>4 PLACES</td> <td>± ---</td> <td>± ---</td> </tr> <tr> <td>3 PLACES</td> <td>± ---</td> <td>± ---</td> </tr> <tr> <td>2 PLACES</td> <td>± 0.20</td> <td>± ---</td> </tr> <tr> <td>1 PLACE</td> <td>± ---</td> <td>± ---</td> </tr> </tbody> </table>		mm	INCH	4 PLACES	± ---	± ---	3 PLACES	± ---	± ---	2 PLACES	± 0.20	± ---	1 PLACE	± ---	± ---	MM ONLY	NTS	METRIC	
			mm	INCH																		
		4 PLACES	± ---	± ---																		
3 PLACES	± ---	± ---																				
2 PLACES	± 0.20	± ---																				
1 PLACE	± ---	± ---																				
	ANGULAR ± 3 °	DRAWN BY	DATE	TITLE																		
	DRAFT WHERE APPLICABLE MUST REMAIN WITHIN DIMENSIONS	BOKOK	2008/02/01	SAS RECEPTACLE EXTENDED HEIGHT, SMT WITH SOLDERTAB																		
		YKOH	2008/02/18	MOLEX INCORPORATED																		
		BOKOK	2010/02/19	MATERIAL NO.	DOCUMENT NO.	SHEET NO.																
				SEE TABLE	SD-78367-001	2 OF 5																
				THIS DRAWING CONTAINS INFORMATION THAT IS PROPRIETARY TO MOLEX INCORPORATED AND SHOULD NOT BE USED WITHOUT WRITTEN PERMISSION																		

10 9 8 7 6 5 4 3 2 1

F

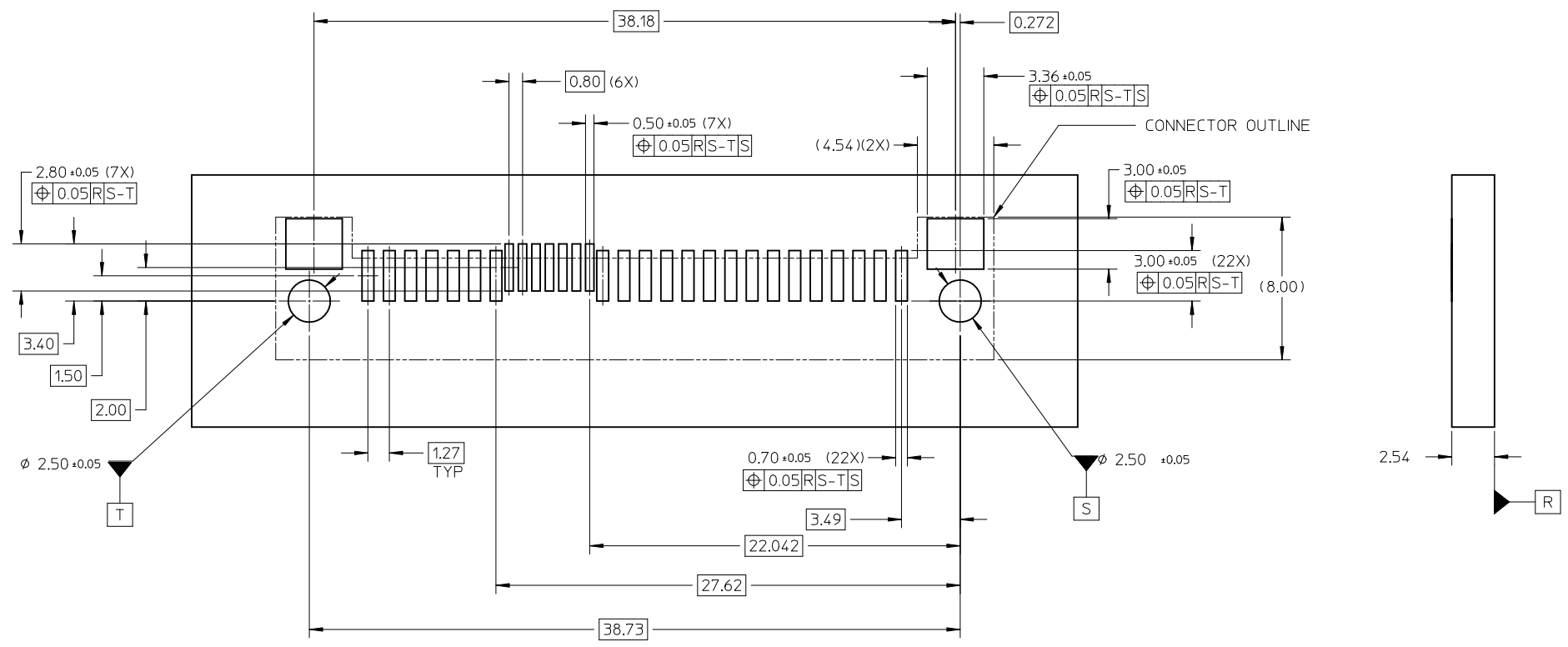
E

D

C

B

A

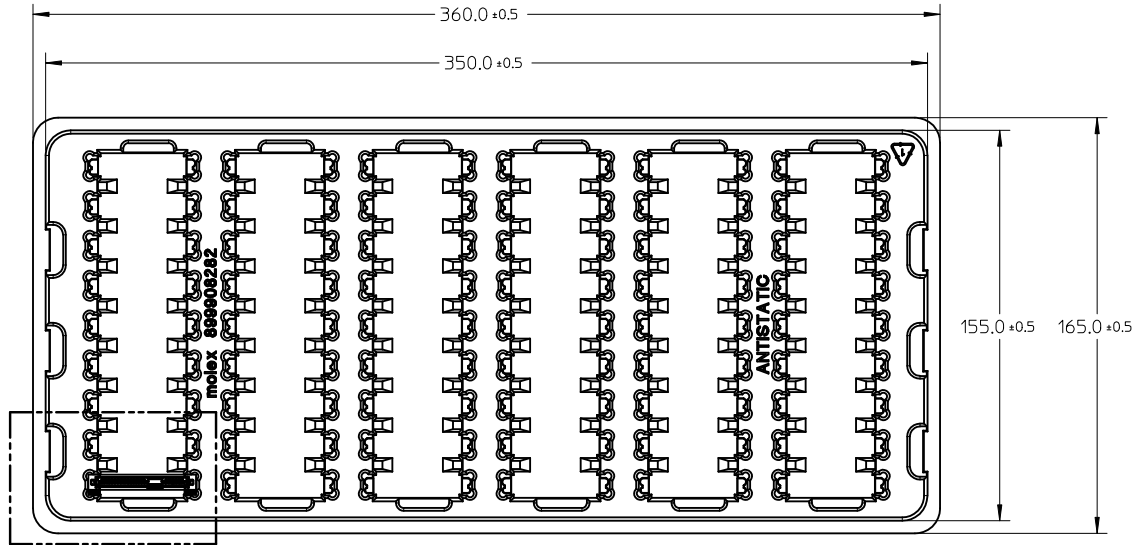


RECOMMENDED PCB LAYOUT

<b>CHANGE TAPE WIDTH</b> EC NO: S2010-0654 DRWN:WJAP 2010/02/03 CHKD:YKOH 2008/02/18 APPR:BOKOK 2010/02/20	QUALITY SYMBOLS $F_A=0$ $F_C=0$ $F_P=0$	GENERAL TOLERANCES (UNLESS SPECIFIED)		DIMENSION STYLE <b>MM ONLY</b>	SCALE <b>NTS</b>	DESIGN UNITS <b>METRIC</b>	THIRD ANGLE PROJECTION	
		mm	INCH	DRAWN BY BOKOK	DATE 2008/02/01	TITLE <b>SAS RECEPTACLE EXTENDED HEIGHT, SMT WITH SOLDERTAB</b>		
		4 PLACES ± --- ± --- 3 PLACES ± --- ± --- 2 PLACES ± 0.20 ± --- 1 PLACE ± --- ± ---	ANGULAR ± 3 °	CHECKED BY YKOH	DATE 2008/02/18	<b>MOLEX INCORPORATED</b>		
		DRAFT WHERE APPLICABLE MUST REMAIN WITHIN DIMENSIONS		APPROVED BY BOKOK	DATE 2010/02/19	MATERIAL NO. <b>SEE TABLE</b>	DOCUMENT NO. <b>SD-78367-001</b>	SHEET NO. <b>3 OF 5</b>

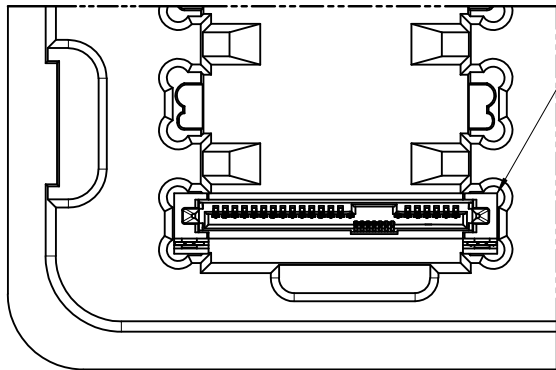
9 8 7 6 5 4 3 2 1

TRAY PACKAGING



- NOTES:  
 1. PACKAGING QTY: 54PCS/TRAY  
 2. NO PICK AND PLACE CAP

DETAIL 2

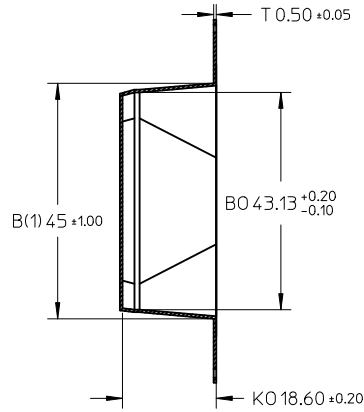


PART ORIENTATION IN TRAY

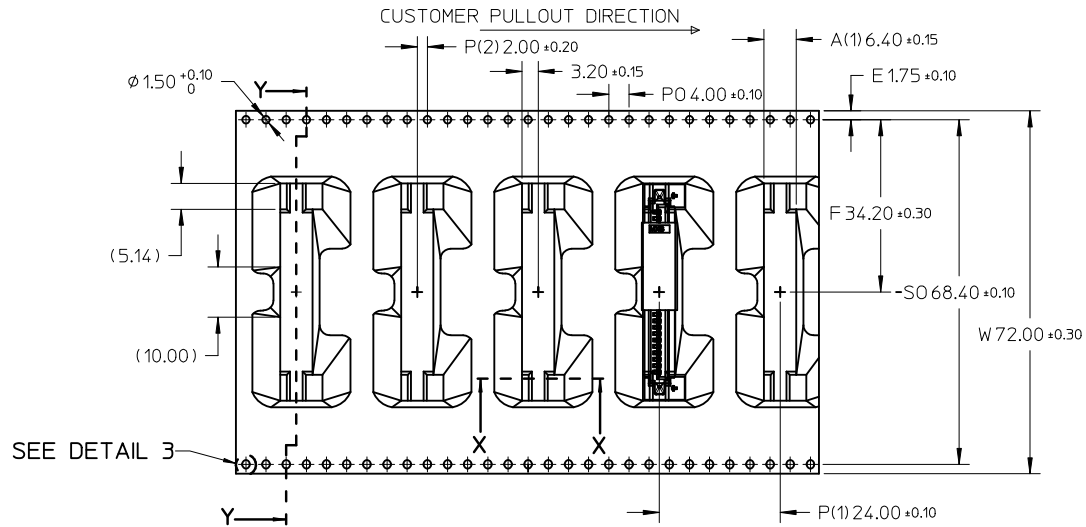
DETAIL 2

CHANGE TAPE WIDTH EC NO: S2010-0654 2010/02/03 DRWN:WJAP 2008/02/18 CHKD:YKOH 2008/02/18 APPR:BOKOK 2010/02/20	QUALITY SYMBOLS F <sub>A</sub> =0 F <sub>C</sub> =0 F <sub>P</sub> =0	GENERAL TOLERANCES (UNLESS SPECIFIED)		DIMENSION STYLE MM ONLY	SCALE NTS	DESIGN UNITS METRIC	THIRD ANGLE PROJECTION		
				DRAWN BY BOKOK	DATE 2008/02/01	TITLE SAS RECEPTACLE EXTENDED HEIGHT, SMT WITH SOLDERTAB			
A3	REV	4 PLACES	± ---	± ---	CHECKED BY YKOH	DATE 2008/02/18	MOLEX INCORPORATED		
		3 PLACES	± ---	± ---	APPROVED BY BOKOK	DATE 2010/02/19	MATERIAL NO. SEE TABLE	DOCUMENT NO. SD-78367-001	SHEET NO. 4 OF 5
		2 PLACES	± 0.20	± ---	THIS DRAWING CONTAINS INFORMATION THAT IS PROPRIETARY TO MOLEX INCORPORATED AND SHOULD NOT BE USED WITHOUT WRITTEN PERMISSION				
		1 PLACE	± ---	± ---					
		ANGULAR ± 3 °							
		DRAFT WHERE APPLICABLE MUST REMAIN WITHIN DIMENSIONS							

TAPE AND REEL PACKAGING

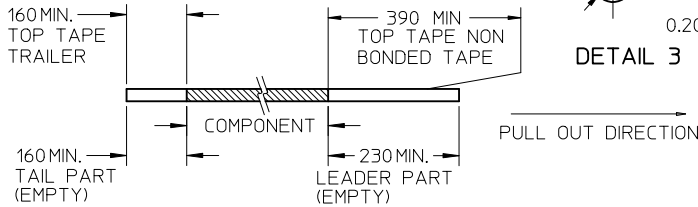


SECTION Y-Y

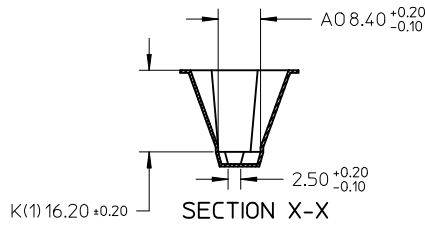


NOTES:

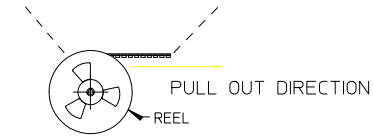
1. LEADER AND TRAILER TAPE



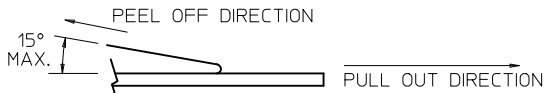
DETAIL 3



SECTION X-X



2. PEELING OFF FORCE OF THE TOP TAPE: 20 - 80gf.  
(PEELING DIRECTION AS SHOWN IN FOLLOWING FIGURE)



- 3. TAPE AND REEL SPECIFICATION IS AS PER EIA-481.
- 4. TAPE AND REEL QUANTITY : 100 PCS/ REEL.
- 5. THE TAPE IS TREATED FOR ANTI-STATIC.
- 6. COLOUR: BLACK. THICKNESS: 0.50mm THICK.

CHANGE TAPE WIDTH EC NO: S2010-0654 DRWN:WJAP CHKD:YKOH APPR:BOKOK	DESCRIPTION 2010/02/03 2008/02/18 2010/02/20	QUALITY SYMBOLS	GENERAL TOLERANCES (UNLESS SPECIFIED)		DIMENSION STYLE MM ONLY		SCALE NTS	DESIGN UNITS METRIC	THIRD ANGLE PROJECTION	
		▽ <sub>A</sub> =0	mm	INCH	DRAWN BY	DATE	TITLE			
		▽ <sub>C</sub> =0	4 PLACES ± --- ± ---	3 PLACES ± --- ± ---	BOKOK	2008/02/01	SAS RECEPTACLE EXTENDED HEIGHT, SMT WITH SOLDERTAB			
		▽ <sub>P</sub> =0	2 PLACES ± 0.20 ± ---	1 PLACE ± --- ± ---	YKOH	2008/02/18				
ANGULAR ± 3 °			APPROVED BY		DATE	MATERIAL NO. DOCUMENT NO. SHEET NO.				
DRAFT WHERE APPLICABLE MUST REMAIN WITHIN DIMENSIONS			SEE TABLE		BOKOK 2010/02/19		molex SD-78367-001		5 OF 5	
THIS DRAWING CONTAINS INFORMATION THAT IS PROPRIETARY TO MOLEX INCORPORATED AND SHOULD NOT BE USED WITHOUT WRITTEN PERMISSION										