

PLEASE CHECK WWW.MOLEX.COM FOR LATEST PART INFORMATION

Part Number: [112000005](#)
Status: **Active**
Description: applicom® PCU2000ETH Ethernet TCP/IP 10/100 Mbps card, PCI 3.3/ 5V bus, RoHS compliant

Documents:

[Drawing \(PDF\)](#) [RoHS Certificate of Compliance \(PDF\)](#)

General

Product Family	Network Interface
Series	112000
Approvals	CE
Communication Speed	Ethernet: 10/100 Mbps
Mounting Style	N/A
Product Name	applicom®
Protocol	N/A
Type	PC Card

Physical

Channels	1
Interface	Ethernet
Network Connection Type	Ethernet: RJ45
Packaging Type	Carton
Processor	AMD SC520
Temperature Range - Operating	0°C to +65°C

Electrical

Current - Maximum Input	5.5W
EMC	EN 55022 Class B, EN 61000-3-2, EN 61000-3-3, EN 61000-6-2
Supply Voltage	N/A

Material Info

Old Part Number	APP-ETH-PCU-C
-----------------	---------------

Reference - Drawing Numbers

Sales Drawing	E-112000-0001
---------------	---------------

EU RoHS

**ELV and RoHS
Compliant**
**REACH SVHC
Not Reviewed**
**Halogen-Free
Status
Not Reviewed**

China RoHS



Need more information on product environmental compliance?

Email productcompliance@molex.com
 For a multiple part number RoHS Certificate of Compliance, [click here](#)

Please visit the [Contact Us](#) section for any non-product compliance questions.

Search Parts in this Series

[112000Series](#)



Connect your applications to industrial networks through Ethernet messaging.

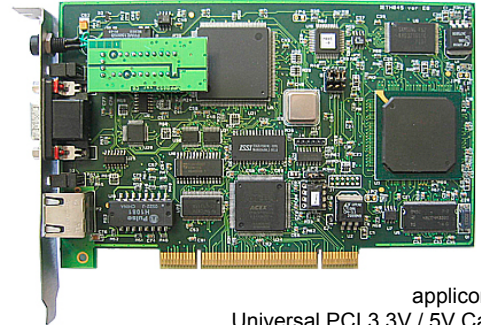
20 Aug. 09
DW2005101

applicom® Ethernet PCU2000ETH

Best choice for SCADA/HMI applications

Features

- RoHS compliant
- All protocols included in the package
- Free full technical support during 2 years of hardware warranty
- On-board processor eliminates data bottle necks, ensuring delivery of time critical information
- Certified with over 50 major SCADA/HMI packages
- Fast Ethernet 10/100, RJ-45 Port
- COMBO Offer =
Ethernet + Profibus 1.5Mbps
or
Ethernet + Serial 38.4Kbps
- Simultaneously run all TCP/IP protocols in Client/Server modes
- Redundancy feature via OPC Server
- Win32 NDIS driver (using applicom® interface as a standard Ethernet card)
- Onboard internal data base (32 Kwords + 32 Kbits)



applicom®
Universal PCI 3.3V / 5V Card



Overview

applicom® is a range of intelligent communication solutions, complete and ready to use covering more than 40 protocols among a wide choice of industrial networks and fieldbuses: Ethernet TCP/IP, Profibus, Modbus Plus, Data Highway Plus, WorldFIP and Serial Links. These solutions connect your PC-based applications (HMI, SCADA, MES, custom applications) to industrial equipment (programmable controller, I/O modules, devices...).

Thanks to applicom® smart built-in processor technology - each interface card is able to execute all management and the processing (polling, frame management, etc.) of communications protocols, resulting in extremely fast, efficient application performance.

The applicom® software package includes:

- Graphical configuration software.
- Test and network diagnostic tools.
- Data servers
 - ✓ OPC DA v1.0a, v2.05 and v3.0 (including an OPC client with its source code)
 - ✓ Wonderware I/O Server (DAServer, DDE, FastDDE, SuiteLink)
- Development libraries
 - ✓ DLL Library
 - ✓ MS Visual Studio (.NET/C#/VB/C++/C), Borland Delphi
 - ✓ National Instruments (LabWindows CVI, LabVIEW/VI)

Supported OS

Standard package

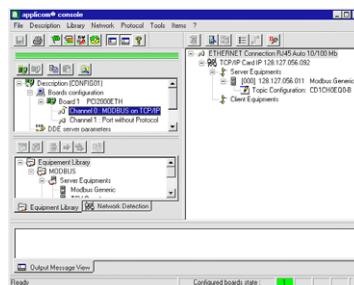
- Windows 32-bit (Vista / XP / 2003 Server)

Free Download

- Windows XP Embedded, VenturCom RTX, VxWorks, QNX, Linux, DOS

Compatible with

- Altus
- GE Fanuc
- Mitsubishi Electric Automation
- Omron
- Rockwell Automation
- Schneider Electric
- Siemens



- Configuration Software -



- OPC Server -



Communication Ports

1 Ethernet port

Port Type	1 Ethernet port - IEEE 802.3 for industrial and office (NDIS driver for XP/2000/NT)
Connector	10/100baseT (RJ45)
LED Indicators	4 LEDs - TX, RX, Link, 100 Mbps
Speed	10/100 Mbps (Auto-negotiation)

+

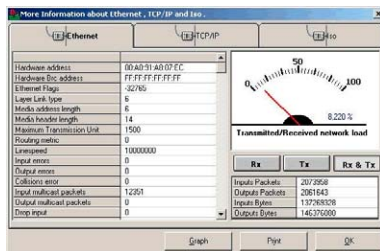
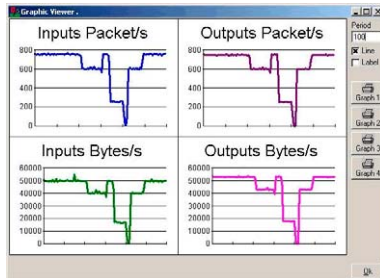
1 Profibus port

Port Type	1 Profibus port (EN 50 170)
Connector	D-Sub, 9 pin, female
LED Indicators	2 LEDs - TX / RX
Electrical Interface	RS485 with galvanic insulation (500 V)
Speed	9.6 Kbps to 1.5 Mbps

or

1 Serial port

Port Type	1 asynchronous serial port
Connector	D-Sub, 9 pin, male
LED Indicators	2 LEDs - TX / RX
Electrical Interface	RS485/RS422 with galvanic insulation (500 V)
Speed	50 bps to 38.400 Kbps



- Network Diagnostic Tools -

Hardware Specifications

Unit	PCI rev 2.2, 32-bit, 33 MHz, PCI Universal 3.3V/5V keying, PCI-X compatible
Processor	AMD SC520 - 133 MHz
Memory	16 Mbytes SDRAM
Flash Memory	4 Mbytes
Interruption	Hardware Plug&Play
DPRAM Address	Hardware Plug&Play (32 Kbytes used per board)
Digital I/O	Opto-coupled discrete input Voltage -> DC +10 to +30 or AC 24 V (50 to 60 Hz) "Watchdog" output dry contact (24V DC, 0.25 A)
Dimensions (L x W)	168mm x 107mm (6.61" x 4.21")
Consumption	5.5 W
Temperature	Operating: 0° C (32° F) up to +65° C (149° F) Storage: -40° C (-40° F) up to +85° C (185° F)
EMC Compliance	EN55022 Class B, EN61000-6-2, EN61000-3-2, EN61000-3-3
RoHS Compliant	Yes

Protocols (all included in the package)

Ethernet TCP/IP	<ul style="list-style-type: none"> Allen-Bradley - EtherNet/IP (ControlLogix, PLC-5 & SLC 500 Series) Alstom - SRTP (Alspa C80-35 and C80-75) Altus - AInet II (AL2000 and WebGate Series) GE Fanuc - SRTP (90-30 and 90-70 Series) Mitsubishi - Melsec (A and Q Series) Omron - FINS (C, CV and CS Series) Schneider - Open Modbus TCP (TSX Premium, TSX Micro, etc) Schneider - Uni-TE (TSX Premium, TSX Micro, etc) Send/Receive on UDP (dev. free messaging on UDP) Siemens - Industrial Ethernet (S5, S7 and TI-505 Series) Development toolkit for TCP and UDP protocols in client/server modes
Ethernet	<ul style="list-style-type: none"> Schneider - Ethway (TSX Premium, TSX Micro, etc) Siemens - Industrial Ethernet ISO (S5, S7, TF and TI Series)
Profibus	<ul style="list-style-type: none"> Profibus-DP V0 Master Class-1 & Class-2 - All DP slaves devices FDL for S5 Master - Siemens S5 S7 / MPI Master - Siemens S7-300, S7-400 Send/Rec on FDL - Develop your free messaging on Profibus-FDL
Serial	3964/3964R, AS511, DataLink, DF1, Modbus, PPI/PPI+, Saia-BUS, SNP-X, Sucoma, Sysmac-Way, TI-Direct, Uni-Telway, and development toolkit for Serial protocols.

Ordering Information

Part Number	SAP	Product description
APP-ETH-PCU-C	1120000005	applicom® PCU2000ETH Ethernet TCP/IP 10/100 Mbps card, Universal PCI bus (3.3V / 5V), RoHS compliant
APP-EPB-PCU-C	1120000001	applicom® PCU2000ETH Combo Ethernet 10/100 Mbps + Profibus 1.5 MB card, Universal PCI bus (3.3V / 5V), RoHS compliant
APP-ESR-PCU-C	1120000003	applicom® PCU2000ETH Combo Ethernet 10/100 Mbps + Serial RS485/422 card, Universal PCI bus (3.3V / 5V), RoHS compliant

Other related products: IP67/IP20 Ethernet switches, Software solution based on standard Ethernet card, Ethernet I/O for control/command, Ethernet connectivity.

To contact us: www.woodhead.com

North America: US: + 1 800 225 7724 – Canada: +1 519 725 5136
Europe: France: +33 2 32 96 04 20 – Germany: +49 7252 94 96 0 – Italy: +39 010 59 30 77 –
 United: Kingdom +44 1495 356300
Asia: Shanghai, China: +86 21-5835-9885 - Tianjin, China: +86 22-23321717
 Singapore: +65 6268-6868 – Yamato, Japan: +81 46-265-2428 – Nagoya, Japan: +81 52-221-5950