

PLEASE CHECK WWW.MOLEX.COM FOR LATEST PART INFORMATION

Part Number: [0465371200](#)
Status: **Active**
Description: 1.20mm (.047") x 2.00mm (.079") Pitch HD Mezz™ Receptacle, 104 Circuits, 20.00mm (.787") Unmated Height, 11 Rows, 1 Millimeter Wipe, Selectively Filled, Lead-free

Documents:

[3D Model](#)
[Drawing \(PDF\)](#)

[RoHS Certificate of Compliance \(PDF\)](#)

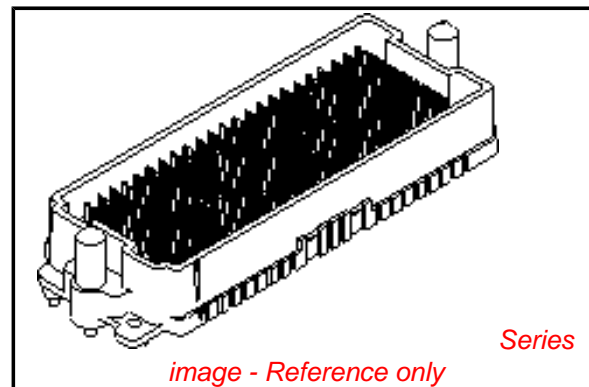
General

| | |
|----------------|---|
| Product Family | PCB Headers |
| Series | 46537 |
| Application | Board-to-Board |
| Comments | 1.20mm (.047") Pitch Pin-to-Pin and 2.00mm (.079") Pitch Row-to-Row |
| Product Name | HD Mezz™ |

Physical

| | |
|--------------------------------|--------------------------------|
| Breakaway | No |
| Circuits (Loaded) | 104 |
| Circuits (maximum) | 104 |
| Circuits Detail | 104 |
| Color - Resin | Black |
| Durability (mating cycles max) | 100 |
| First Mate / Last Break | No |
| Glow-Wire Compliant | No |
| Guide to Mating Part | No |
| Keying to Mating Part | None |
| Lock to Mating Part | Yes |
| Material - Metal | High Performance Alloy (HPA) |
| Material - Plating Mating | Gold |
| Material - Plating Termination | Tin |
| Material - Resin | High Temperature Thermoplastic |
| Number of Rows | 11 |
| Orientation | Vertical |
| PCB Locator | Yes |
| PCB Retention | Yes |
| Packaging Type | Tray |
| Pitch - Mating Interface (in) | 0.047 In |
| Pitch - Mating Interface (mm) | 1.20 mm |
| Pitch - Term. Interface (in) | 0.047 In |
| Pitch - Term. Interface (mm) | 1.20 mm |
| Plating min: Mating (µin) | 30 |
| Plating min: Mating (µm) | 0.75 |
| Plating min: Termination (µin) | 100 |
| Plating min: Termination (µm) | 2.5 |
| Polarized to Mating Part | Yes |
| Polarized to PCB | Yes |
| Robotic Placement | Vacuum Pick-Up Clip |
| Shrouded | Closed Ends |
| Stackable | No |
| Surface Mount Compatible (SMC) | Yes |
| Temperature Range - Operating | -55°C to +105°C |
| Termination Interface: Style | Surface Mount |

Electrical



EU RoHS

ELV and RoHS Compliant
REACH SVHC
 Not Reviewed
Halogen-Free
Status
Not Reviewed

China RoHS



Need more information on product environmental compliance?

Email productcompliance@molex.com
 For a multiple part number RoHS Certificate of Compliance, [click here](#)

Please visit the [Contact Us](#) section for any non-product compliance questions.

Search Parts in this Series

[46537Series](#)

| | |
|-------------------------------|---------|
| Current - Maximum per Contact | 2A |
| Voltage - Maximum | 250V AC |

Solder Process Data

| | |
|--|---------------------------|
| Duration at Max. Process Temperature (seconds) | 20 |
| Lead-free Process Capability | Reflow Capable (SMT only) |
| Max. Cycles at Max. Process Temperature | 2 |
| Process Temperature max. C | 260 |

Material Info

Reference - Drawing Numbers

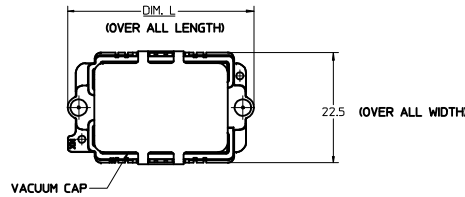
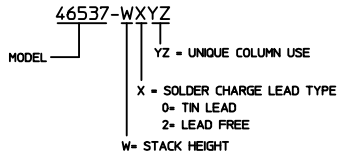
| | |
|---------------|--------------|
| Sales Drawing | SD-46537-001 |
|---------------|--------------|

This document was generated on 03/24/2010

PLEASE CHECK WWW.MOLEX.COM FOR LATEST PART INFORMATION

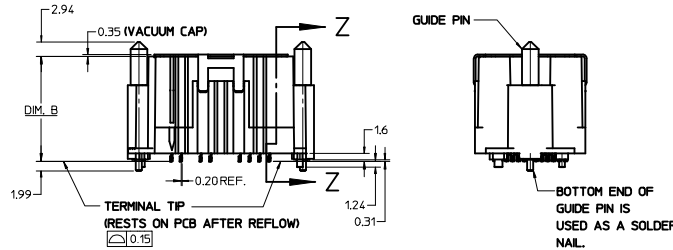
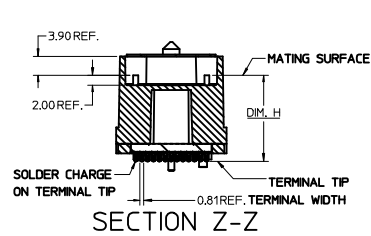
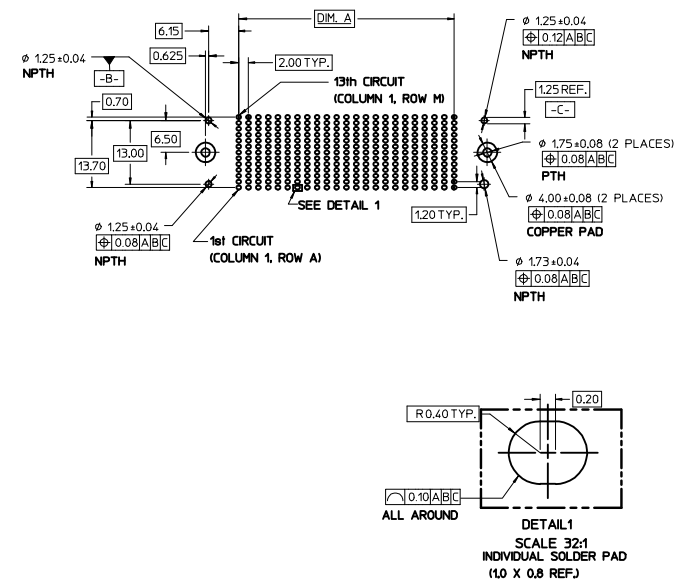
| PART NUMBER | STACK HEIGHT | SOLDER CHARGE | CIRCUIT COUNT | AVAILABLE COLUMNS | USED COLUMNS | DIM. A | DIM. B | DIM. L | DIM. H | PACK PER PK-45830-001 STYLE: MM / COLS |
|-------------|--------------|--------------------|---------------|-------------------|-------------------|--------|--------|--------|--------|---|
| 465371200 | 20mm | Sn95.5 Ag3.8 Cu0.7 | 104 CKT | 11 | 1,2,4,5,8,9,10,11 | 20.00 | 21.4 | 38.1 | 17.51 | 18 MM / 11 ROWS |
| 465371600 | 20mm | SnPb (Eutectic) | 104 CKT | 11 | 1,2,4,5,8,9,10,11 | 20.00 | 21.4 | 38.1 | 17.51 | 18 MM / 11 ROWS |
| 465371201 | 20mm | Sn95.5 Ag3.8 Cu0.7 | 143 CKT | 11 | ALL 11 ROWS | 20.00 | 21.4 | 38.1 | 17.51 | 18 MM / 11 ROWS |
| 465371601 | 20mm | SnPb (Eutectic) | 143 CKT | 11 | ALL 11 ROWS | 20.00 | 21.4 | 38.1 | 17.51 | 18 MM / 11 ROWS |

PART NUMBER SYSTEM

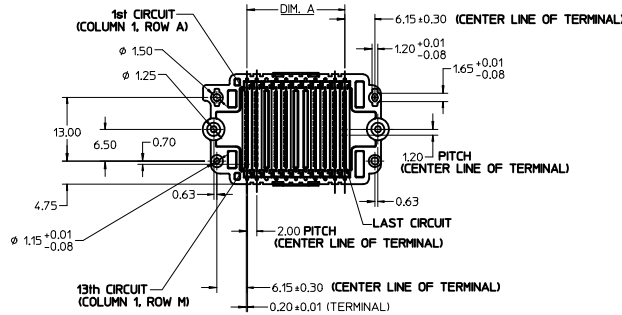


PCB FOOTPRINT LAYOUT

COMPONENT SIDE SHOWN
NOTE: DATUM A IS OPPOSITE SIDE OF PCB.
STENCIL APERTURE REQUIRED FOR 4.0 DIA. COPPER PAD
AS WELL AS SOLDER PAD.



- NOTES:
- MATERIAL:**
HOUSING: BLACK, GLASS FILLED LCP
WAFER: GLASS FILLED LCP
GUIDE PIN: STAINLESS STEEL
TERMINALS: COPPER ALLOY
SOLDER CHARGE: SEE CHART
 - FINISH**
GUIDE PIN: 225 MICRON MIN TIN OVER 13 MICRON MIN NICKEL.
TERMINALS: 0.75 MICRON MIN SELECT GOLD IN CONTACT AREA.
2.50 MICRON MIN SELECT TIN IN SOLDER TAIL AREA.
1.25 MICRON MIN OVERALL NICKEL.
 - PRODUCT SPECIFICATION:** PS-45802-001
 - EACH PART TO HAVE LASER MARK: "X WWWW" FOR LEAD IDENTIFICATION AND DATE CODE.**
X=0 FOR TIN LEAD, X= 2 FOR LEAD FREE
WW = WEEK OF YEAR, YY= LAST TWO DIGITS OF YEAR
(EXAMPLE: 2 1207 IS LEAD FREE, 12TH WEEK OF 2007)
 - THIRTEEN (13) CIRCUITS PER COLUMN.**
 - PART CONFORMS TO CLASS B REQUIREMENTS OF COSMETIC SPECIFICATION PS-45499-002.**
 - PACKAGING SPECIFICATION:** PK-45830-001



| ADD PACKAGING IEC NO. UCP2009-2274 DRAWNSAMIEC 2009/03/12 CHKD: 2009/03/12 APPR.: JCOMERCI 2009/04/20 REV DESCRIPTION | QUALITY SYMBOLS ▽=0 ▽=0 | | GENERAL TOLERANCES (UNLESS SPECIFIED) <table border="1"> <thead> <tr> <th></th> <th>mm</th> <th>INCH</th> </tr> </thead> <tbody> <tr> <td>4 PLACES</td> <td>±0.10</td> <td>±---</td> </tr> <tr> <td>3 PLACES</td> <td>±0.10</td> <td>±---</td> </tr> <tr> <td>2 PLACES</td> <td>±0.15</td> <td>±---</td> </tr> <tr> <td>1 PLACE</td> <td>±0.25</td> <td>±---</td> </tr> </tbody> </table> | | | mm | INCH | 4 PLACES | ±0.10 | ±--- | 3 PLACES | ±0.10 | ±--- | 2 PLACES | ±0.15 | ±--- | 1 PLACE | ±0.25 | ±--- | DIMENSION STYLE MM ONLY | | SCALE 2:1 | | DESIGN UNITS METRIC | | THIRD ANGLE PROJECTION | |
|---|--------------------------------------|-------|---|--|-------------------------------------|----|----------------------------|----------|--|------|----------|-------|------|----------|-------|------|---------|-------|------|-----------------------------------|--|---------------------|--|-------------------------------|--|-----------------------------------|--|
| | | mm | INCH | | | | | | | | | | | | | | | | | | | | | | | | |
| | 4 PLACES | ±0.10 | ±--- | | | | | | | | | | | | | | | | | | | | | | | | |
| | 3 PLACES | ±0.10 | ±--- | | | | | | | | | | | | | | | | | | | | | | | | |
| 2 PLACES | ±0.15 | ±--- | | | | | | | | | | | | | | | | | | | | | | | | | |
| 1 PLACE | ±0.25 | ±--- | | | | | | | | | | | | | | | | | | | | | | | | | |
| DRAFT WHERE APPLICABLE MUST REMAIN WITHIN DIMENSIONS | | | DATE 5/30/07 DATE 13NOV07 | | DATE 14NOV07 | | DATE 14NOV07 | | MOLEX INCORPORATED | | | | | | | | | | | | | | | | | | |
| SIZE D | | | SEE CHART | | DOCUMENT NO. SD-46537-001 | | SHEET NO. 1 OF 1 | | THIS DRAWING CONTAINS INFORMATION THAT IS PROPRIETARY TO MOLEX INCORPORATED AND SHOULD NOT BE USED WITHOUT WRITTEN PERMISSION | | | | | | | | | | | | | | | | | | |