

**PLEASE CHECK WWW.MOLEX.COM FOR LATEST PART INFORMATION**

**Part Number:** [0354648000](#)  
**Status:** **Active**  
**Overview:** [bulb sockets](#)  
**Description:** Positive Terminal for PT Bulb Socket, AVSS 0.50~0.85mm<sup>2</sup>

**Documents:**

[Drawing \(PDF\)](#) [RoHS Certificate of Compliance \(PDF\)](#)  
[Product Specification PS-35842-001 \(PDF\)](#)

**General**

Product Family	Crimp Terminals
Series	<a href="#">35464</a>
Crimp Quality Equipment	Yes
Overview	<a href="#">bulb sockets</a>
Product Name	Bulb Socket

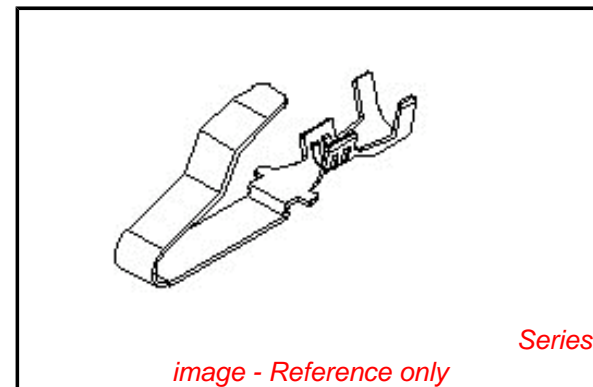
**Physical**

Gender	Female
Material - Metal	Phosphor Bronze
Material - Plating Mating	Unplated
Material - Plating Termination	Unplated
Packaging Type	Reel
Termination Interface: Style	Crimp or Compression
Wire Insulation Diameter	1.90mm (.075") max.
Wire Size AWG	18, 20
Wire Size mm <sup>2</sup>	N/A

**Material Info**

**Reference - Drawing Numbers**

Packaging Specification	PK-35464-8000
Product Specification	PS-35842-001
Sales Drawing	SD-35464-001



**EU RoHS**

**ELV and RoHS  
Compliant**  
**REACH SVHC  
Contains SVHC: No**  
**Halogen-Free  
Status**

**China RoHS**



**Need more information on product  
environmental compliance?**

Email [productcompliance@molex.com](mailto:productcompliance@molex.com)  
 For a multiple part number RoHS Certificate of Compliance, [click here](#)

Please visit the [Contact Us](#) section for any non-product compliance questions.

**Search Parts in this Series**

[35464Series](#)

**Use With**

[35842](#) , [35843](#)

**Application Tooling | FAQ**

*Tooling specifications and manuals are found by selecting the products below. Crimp Height Specifications are then contained in the Application Tooling Specification document.*

**Global**

Description	Product #
Hand Crimp Tool for Bulb Socket Positive Terminal	<a href="#">0638195000</a>
Fine Adjust Applicator for Sealed PT-Bulb Socket Positive Terminal 0.50-0.85mm <sup>2</sup> and 18-20 AWG.	<a href="#">0639012100</a>

This document was generated on 06/01/2010

**PLEASE CHECK [WWW.MOLEX.COM](http://WWW.MOLEX.COM) FOR LATEST PART INFORMATION**

DWG. NO. SD-35464-001

PROJECT NO.

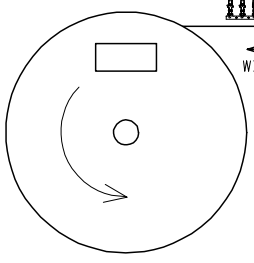
E

D

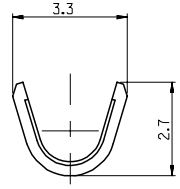
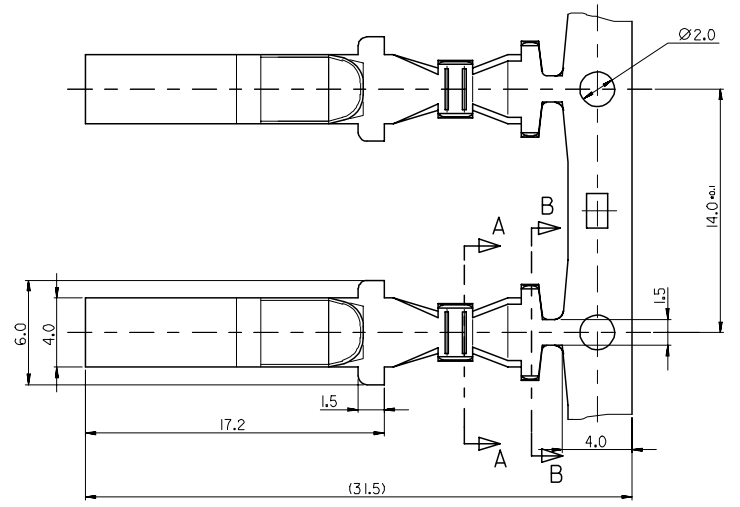
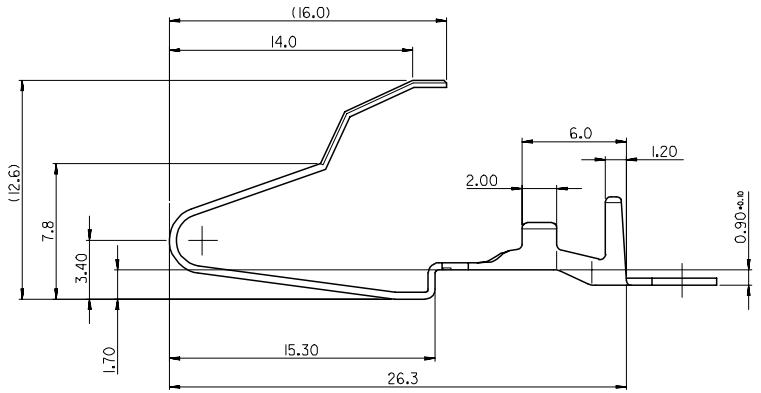
C

B

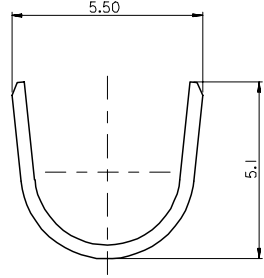
DO NOT SCALE DRAWING  
DIMENSION IN METRIC



WINDING FEEDING SIDE



SECT. A-A



SECT. B-B

NOTES

1. APPLICABLE WIRE SIZE :AVS (AVSS)0.5±0.85 SQUARE MILIMETER
2. APPLICABLE WIRE SEAL PART NO: 35903-0096
3. APPLICABLE SOCKET PART NO: 35842-030\*/35843-02\*\*
4. MATERIAL: PHOSPHOR BRONZE,  
PLATING=UNPLATED, THICKNESS=0.40mm

CHANGED DIMENSION	EC NO.	DRWN: Y.SIK,KIM/01/09/20	CHK: Y.SIK,KIM/01/09/20	APPR: C.W.LEE 01/09/21	QUALITY SYMBOLS	GENERAL TOLERANCES: (UNLESS SPECIFIED)		SCALE	DESIGN UNITS	THIRD ANGLE PROJECTION	DIMENSIONS:	SHT	REV	
						mm	INCH	5:1	mm	INCH	mm	mm	mm	mm
B	REV				MAJOR	4 PLACES	±0.	±.	Y.SIK,KIM	98/11/26	TITLE:			
					CRITICAL	3 PLACES	±0.	±.	CHECKED BY & DATE	98/11/30	SEALED PT BULB SOCKET			
						2 PLACES	±0.20	±.	B.K.CHOI	98/11/30	POSITIVE TERMINAL			
						1 PLACE	±0.30	±.	APPROVED BY & DATE	98/11/30	MOLEX INCORPORATED			
									C.W.LEE	98/11/30	KOREA			
									CAD FILENAME		MATERIAL NO.	DRAWING NO.	SHEET NO.	
									sd35464.dgn		35464-8000	SD-35464-001	1 OF 1	
									DRAFT WHERE APPLICABLE MUST REMAIN WITHIN DIMENSIONS				SIZE	
									THIS DRAWING CONTAINS INFORMATION THAT IS PROPRIETARY TO MOLEX INCORPORATED AND SHOULD NOT BE USED WITHOUT WRITTEN PERMISSION.				C	