

PLEASE CHECK WWW.MOLEX.COM FOR LATEST PART INFORMATION

Part Number: [0050579202](#)
Status: **Active**
Overview: [cgrid_sl_products](#)
Description: 2.54mm (.100") Pitch SL™ Crimp Housing, Single Row, Version C, Front Ribs, 2 Circuits

Documents:

| | |
|---|--|
| 3D Model | Product Specification PS-70058 (PDF) |
| Drawing (PDF) | Product Specification PS-70400 (PDF) |
| Packaging Specification (PDF) | RoHS Certificate of Compliance (PDF) |

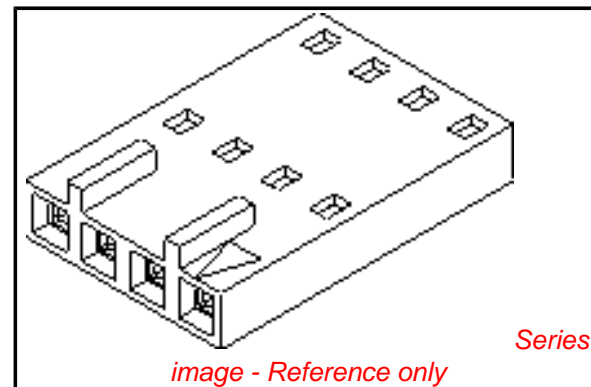


image - Reference only

Agency Certification

| | |
|-----|-----------|
| CSA | LR19980 |
| TUV | R72081037 |
| UL | E29179 |

General

| | |
|----------------|-----------------------------------|
| Product Family | Crimp Housings |
| Series | 70066 |
| Comments | Version C |
| Overview | cgrid_sl_products |
| Product Name | SL™ |

Physical

| | |
|-------------------------------|-----------------|
| Circuits (maximum) | 2 |
| Color - Resin | Black |
| Flammability | 94V-0 |
| Gender | Female |
| Glow-Wire Compliant | No |
| Material - Resin | Polyester Alloy |
| Number of Rows | 1 |
| Packaging Type | Bag |
| Panel Mount | No |
| Pitch - Mating Interface (in) | 0.100 In |
| Pitch - Mating Interface (mm) | 2.54 mm |
| Stackable | No |
| Temperature Range - Operating | -40°C to +105°C |

Material Info

| | |
|-----------------|------------|
| Old Part Number | 70066-0071 |
|-----------------|------------|

Reference - Drawing Numbers

| | |
|-------------------------|--------------------|
| Packaging Specification | PK-70066-100 |
| Product Specification | PS-70058, PS-70400 |
| Sales Drawing | SD-70066-0071-0094 |
| Test Summary | TS-70058-001 |

| | |
|---|--|
| EU RoHS ELV and RoHS Compliant REACH SVHC Contains SVHC: No Halogen-Free Status Not Halogen-Free | China RoHS  |
|---|--|

Need more information on product environmental compliance?

Email productcompliance@molex.com
 For a multiple part number RoHS Certificate of Compliance, [click here](#)

Please visit the [Contact Us](#) section for any non-product compliance questions.

Search Parts in this Series

[70066Series](#)

Mates With

[70544](#), [70546](#), [70554](#), [70556](#), [70543](#), [70545](#), [70553](#), [70555](#)

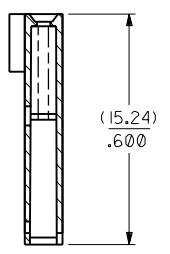
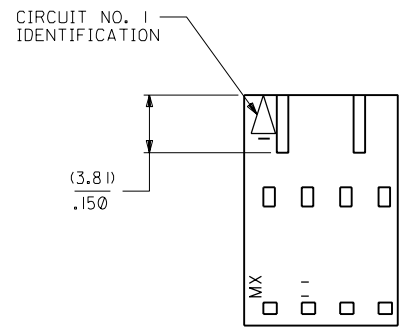
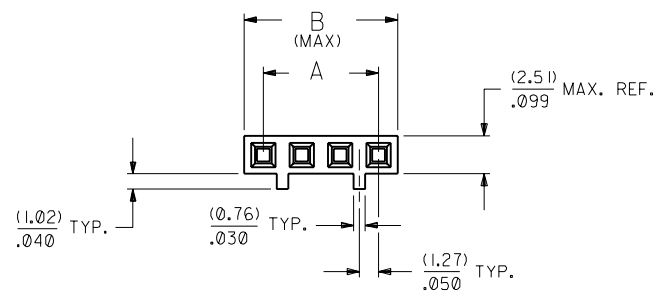
Use With

[70058](#), [71851](#)

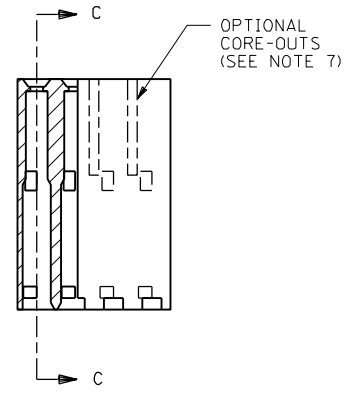
NOTES:

- 1) MATERIAL: G.F. POLYESTER
- 2) HOUSING TO BE USE WITH TERMINAL PT. NO. 70058-****
- 3) SEE CHART FOR CIRCUIT SIZES.
- 4) TO BE USED WITH (0.64)/.025 SQ. OR RD. PINS.
- 5) PARTS STACKABLE END TO END ON (2.54)/.100 CENTERS.
- 6) REFER TO PRODUCT SPECIFICATION NO. : P.S.-70058
- 7) PARTS MAY OR MAY NOT BE SUPPLIED WITH EXTERIOR CORE-OUT CONFIGURATION. SEE DWG. SD-70066-**** FOR OPTIONAL HOUSING DETAILS.
- 8) PACKAGE PER PK-70066-100.

OPTION "C"



SECTION C-C



| CKT. SIZE | EDP. NO. | ENG. NO. | A | B |
|-----------|------------|------------|-----------------|-----------------|
| 2 | 50-57-9202 | 70066-0071 | (2.54) / .100 | (5.05) / .199 |
| 3 | 50-57-9203 | 70066-0072 | (5.08) / .200 | (7.59) / .299 |
| 4 | 50-57-9204 | 70066-0073 | (7.62) / .300 | (10.13) / .399 |
| 5 | 50-57-9205 | 70066-0074 | (10.16) / .400 | (12.67) / .499 |
| 6 | 50-57-9206 | 70066-0075 | (12.70) / .500 | (15.21) / .599 |
| 7 | 50-57-9207 | 70066-0076 | (15.24) / .600 | (17.75) / .699 |
| 8 | 50-57-9208 | 70066-0077 | (17.78) / .700 | (20.29) / .799 |
| 9 | 50-57-9209 | 70066-0078 | (20.32) / .800 | (22.83) / .899 |
| 10 | 50-57-9210 | 70066-0079 | (22.86) / .900 | (25.37) / .999 |
| 11 | 50-57-9211 | 70066-0080 | (25.40) / 1.000 | (27.91) / 1.099 |
| 12 | 50-57-9212 | 70066-0081 | (27.94) / 1.100 | (30.45) / 1.199 |
| 13 | 50-57-9213 | 70066-0082 | (30.48) / 1.200 | (32.99) / 1.299 |
| 14 | 50-57-9214 | 70066-0083 | (33.02) / 1.300 | (35.53) / 1.399 |
| 15 | 50-57-9215 | 70066-0084 | (35.56) / 1.400 | (38.07) / 1.499 |
| 16 | 50-57-9216 | 70066-0085 | (38.10) / 1.500 | (40.61) / 1.599 |
| 17 | 50-57-9217 | 70066-0086 | (40.64) / 1.600 | (43.15) / 1.699 |
| 18 | 50-57-9218 | 70066-0087 | (43.18) / 1.700 | (45.69) / 1.799 |
| 19 | 50-57-9219 | 70066-0088 | (45.72) / 1.800 | (48.23) / 1.899 |
| 20 | 50-57-9220 | 70066-0089 | (48.26) / 1.900 | (50.77) / 1.999 |
| 21 | 50-57-9221 | 70066-0090 | (50.80) / 2.000 | (53.31) / 2.099 |
| 22 | 50-57-9222 | 70066-0091 | (53.34) / 2.100 | (55.85) / 2.199 |
| 23 | 50-57-9223 | 70066-0092 | (55.88) / 2.200 | (58.39) / 2.299 |
| 24 | 50-57-9224 | 70066-0093 | (58.42) / 2.300 | (60.93) / 2.399 |
| 25 | 50-57-9225 | 70066-0094 | (60.96) / 2.400 | (63.47) / 2.499 |

| | | | | | | | |
|--|--|--|--|--|--|---|--|
| REVISIONS LTR. REVISIONS LTR. REVISIONS | | E REVISOR PER ECR# U10967 8-8-91 MJM/MGB D REVISOR PER ECR# U80051 3-27-89 MCB C REDRAWN ON CAD ECR # 9120 5/5/86 WZ | | DIMENSIONS SHOWN (METRIC) INCH UNLESS OTHERWISE SPECIFIED TOLERANCES: ANGULAR ± 1/2° 3 PLACE ± .010 INCH --- METRIC 2 PLACE ± .014 ± 0.25 1 PLACE --- ± 0.35 DRAFT WHERE APPLICABLE MUST REMAIN WITHIN DIMENSIONS DRWG. NO. SD-70066-0071-0094 FILE NAME 700660071 THIS DRAWING CONTAINS INFORMATION THAT IS PROPRIETARY TO MOLEX INC. AND SHOULD NOT BE USED WITHOUT WRITTEN PERMISSION. | | MFG. SH. REV. REVISIONS TITLE HOUSING CONNECTOR (2.54)/.100 GRID STACKABLE SINGLE ROW SHEET NO. 1 DATE 03/26/86 MOLEX INCORPORATED U.S.A. L1SLE,ILL. 60532 DIV. DA | |
|--|--|--|--|--|--|---|--|