

PLEASE CHECK WWW.MOLEX.COM FOR LATEST PART INFORMATION

Part Number: [0989821010](#)
Status: **Active**
Overview: [mox crimp terminals](#)
Description: 2.54mm (.100") Pitch MOX Receptacle Kit, Dual Row, 20 Circuits, White

Documents:

[Drawing \(PDF\)](#) [RoHS Certificate of Compliance \(PDF\)](#)

General

Product Family Crimp Housings
 Series [98982](#)
 Overview [mox crimp terminals](#)
 Product Name MOX

Physical

Breakaway No
 Circuits (maximum) 20
 Color - Resin White
 Gender Receptacle
 Glow-Wire Compliant No
 Keying to Mating Part None
 Lock to Mating Part Yes
 Material - Resin Polyester
 Number of Rows 2
 Packaging Type Bag
 Panel Mount No
 Pitch - Mating Interface (in) 0.100 In
 Pitch - Mating Interface (mm) 2.54 mm
 Pitch - Term. Interface (in) 0.100 In
 Pitch - Term. Interface (mm) 2.54 mm
 Polarized to Mating Part No
 Ports 1
 Stackable No
 Temperature Range - Operating -40°C to +125°C

Electrical

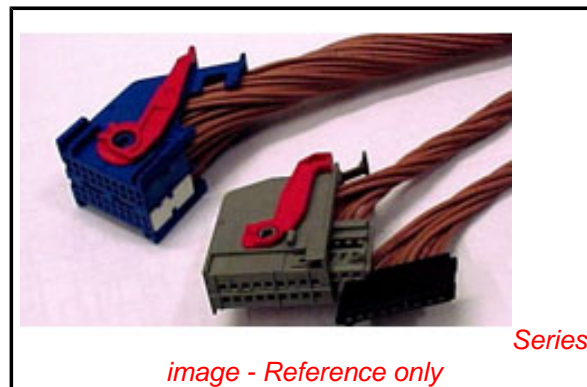
Current - Maximum per Contact 6A

Material Info

Old Part Number 74100310

Reference - Drawing Numbers

Application Specification AS-98982-001
 Packaging Specification PK-98982-002
 Sales Drawing SD-98982-001



EU RoHS

**ELV and RoHS
 Compliant**
**REACH SVHC
 Contains SVHC: No**
**Halogen-Free
 Status
 Not Reviewed**

China RoHS



**Need more information on product
 environmental compliance?**

Email productcompliance@molex.com
 For a multiple part number RoHS Certificate of
 Compliance, [click here](#)

Please visit the [Contact Us](#) section for any
 non-product compliance questions.

Search Parts in this Series

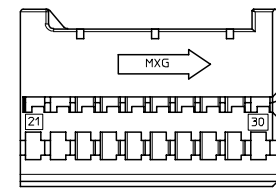
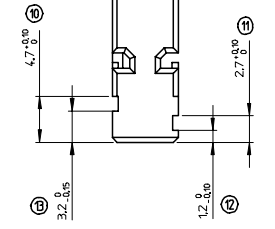
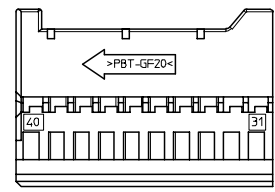
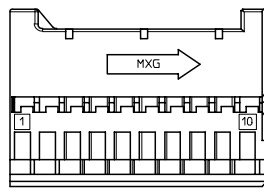
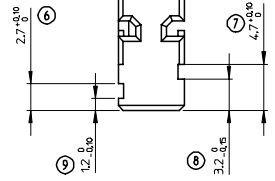
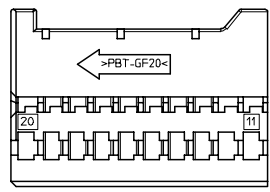
[98982Series](#)

Mates With

Contact Molex

Use With

[98658](#) MOX Crimp Terminal



MOLEX P/N : 0989821016

DESCRIPTION : MOX Rcpt Module 0.635 Blu 20Ckt

COLOR : BLUE

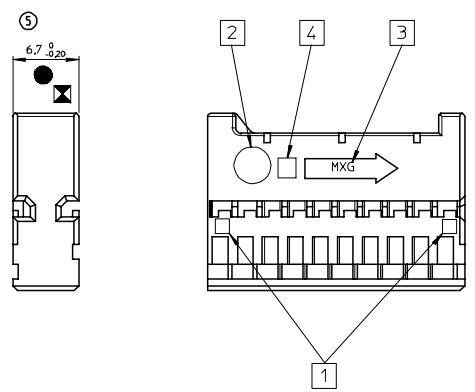
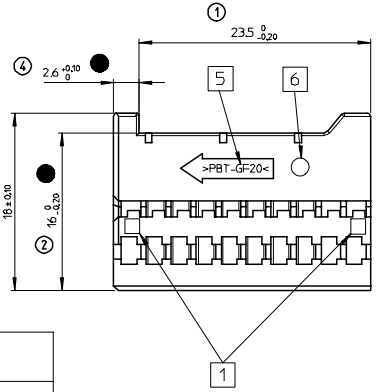
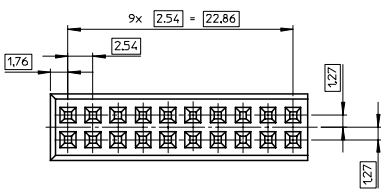
MOLEX P/N : 0989821010

DESCRIPTION : MOX Rcpt Module 0.635 Whi 20Ckt

COLOR : WHITE

MATERIAL : >PBT-GF20<

WEIGHT : 1.622 g



- FOR ILLUSTRATION PURPOSE, THE MOX RCPT MODULE SHOWN IS THE BLUE CODING P/N 0989821016. SEE CODING CHART FOR OTHER COLOR VERSION.

- PRODUCT QUALIFIED ACCORDING TO PSA STANDARD: 9629764699A.

- APPLICATION SPECIFICATION: RAS-98982-001

- INTERFACE DRAWING IS THE PROPERTY FROM PSA: 963329799.

- USE WITH MOX TERMINAL FOLLOWING SD-98658-004.

- THESE MODULES FIT INTO MOX MOUNTING HOUSING RECEPTACLE 40CKT P/N :

- 0989821020
- 0989821021
- 0989821026
- 0989821028



1:1

MARKING :

- 1 - CAVITY NUMBER
- 2 - DATUM MONTH/YEAR
- 3 - MOLEX MARK
- 4 - IMPRESSION MARK
- 5 - RAW MATERIAL
- 6 - REVISION LEVEL

INDICATION DIMENSIONS S.P.C DENOTES S.P.C DIMENSIONS
 INDICATION DIMENSIONS CRITIQUES DENOTES CRITICAL DIMENSIONS
 INDICATION DIMENSIONS FONCTIONNELLES DENOTES FUNCTIONAL DIMENSIONS

QUANTITE PAR FEUILLE INDIVIDUELLE QUANTITY PER INDIVIDUAL SHEET

1 0 3

FIRST RELEASE E.C. NO. 02008-0096 DRAWING POUCHAUD 2007/10/15 CHECKED LUELL 2007/10/15 APPREUVE L'EUR 2007/10/15 A	QUALITY SYMBOLS	GENERAL TOLERANCES (UNLESS SPECIFIED)	DIMENSION STYLE MM ONLY	SCALE 4:1	DESIGN UNITS METRIC	THIRD ANGLE PROJECTION	
	0 1 2 3	4 PLACES ± 3 PLACES ± 2 PLACES ±0.05 1 PLACE ±0.10 ANGULAR ± 2°	mm INCH ± ± ± ± ± ± ± ±	DRAWN BY LPOUCHAUD 2007/09/07 CHECKED BY YIGEL 2007/09/07 APPROVED BY STICKEIR 2007/09/10	TITLE MOX RCPT MODULE 20CKT	MOLEX INCORPORATED DOCUMENT NO. SD-98982-001	SHEET NO. 1 OF 1
	DRAFT WHERE APPLICABLE MUST REMAIN WITHIN DIMENSIONS		SEE CHART	THIS DRAWING CONTAINS INFORMATION THAT IS PROPRIETARY TO MOLEX INCORPORATED AND SHOULD NOT BE USED WITHOUT WRITTEN PERMISSION			
	MATERIAL NO. _____ SIZE 1						