

PLEASE CHECK WWW.MOLEX.COM FOR LATEST PART INFORMATION

Part Number: [0050375093](#)
Status: **Active**
Overview: [spox](#)
Description: 2.50mm (.098") Pitch SPOX™ Wire-to-Board Crimp Housing, Friction Lock, 9 Circuits

Documents:

[3D Model](#) [Product Specification PS-5264-001 \(PDF\)](#)
[Drawing \(PDF\)](#) [RoHS Certificate of Compliance \(PDF\)](#)

Agency Certification

CSA LR37272
 UL E29179

General

Product Family Crimp Housings
 Series [5264](#)
 Overview [spox](#)
 Product Name SPOX™

Physical

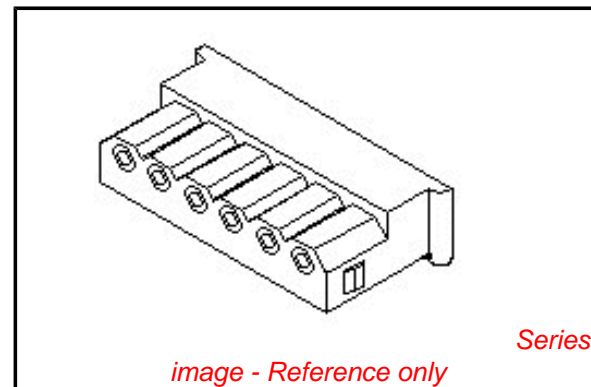
Circuits (maximum) 9
 Flammability 94V-0
 Gender Female
 Glow-Wire Compliant No
 Number of Rows 1
 Packaging Type Bag
 Panel Mount No
 Pitch - Mating Interface (in) 0.098 In
 Pitch - Mating Interface (mm) 2.50 mm
 Polarized to Mating Part Yes
 Stackable No
 Temperature Range - Operating -40°C to +105°C

Material Info

Old Part Number 5264-09

Reference - Drawing Numbers

Packaging Specification SPK-5264-001
 Product Specification PS-5264-001, RPS-5264-001, RPS-5264-002,
 RPS-5264-003, RPS-5264-004, RPS-5264-005,
 RPS-5264-006
 Sales Drawing SD-5264-N



EU RoHS

**ELV and RoHS
 Compliant**
**REACH SVHC
 Contains SVHC: No**
**Halogen-Free
 Status**

China RoHS



Not Halogen-Free

**Need more information on product
 environmental compliance?**

Email productcompliance@molex.com
 For a multiple part number RoHS Certificate of
 Compliance, [click here](#)

Please visit the [Contact Us](#) section for any
 non-product compliance questions.

Search Parts in this Series

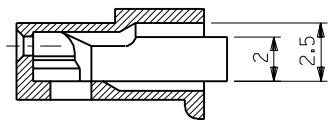
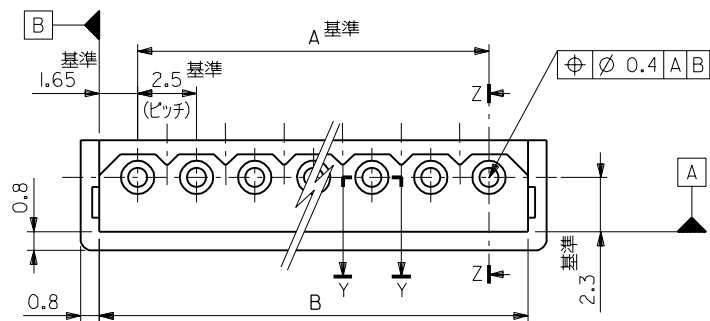
[5264Series](#)

Mates With

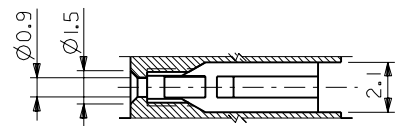
[5267](#) vertical shrouded PCB header, [5268](#)
 right angle shrouded PCB header

Use With

[5263](#)



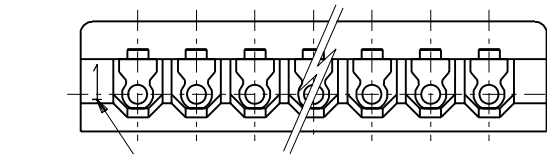
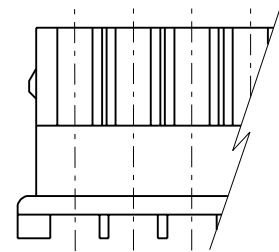
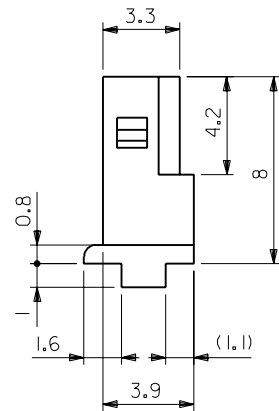
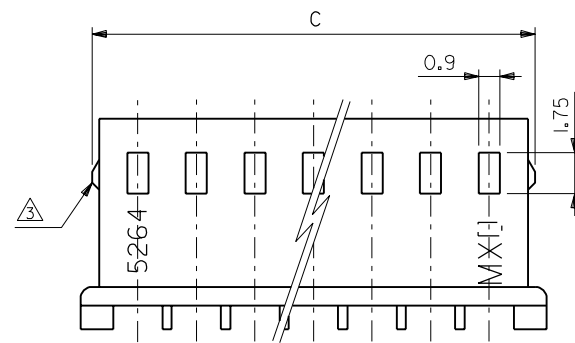
断面 Z-Z



断面 Y-Y

注記:

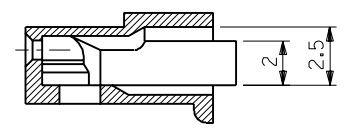
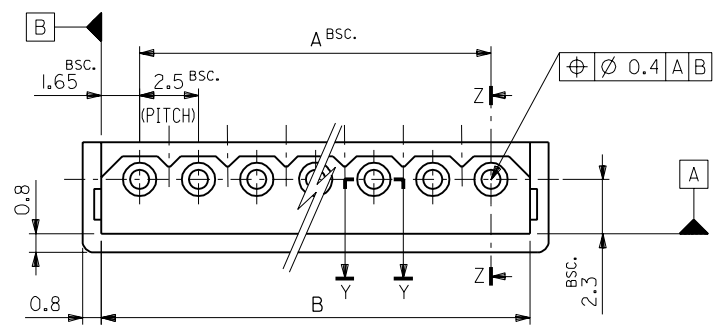
- 適合端子: 5263PBT
- 嵌合相手: 5267 シリーズ, 5268 シリーズ
- 9極以上はロックなし。



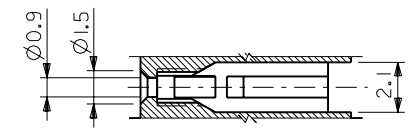
CIRCUIT NO.

| | | | | | | |
|---|------|------|------------|------------|---------|---|
| | 38.3 | 35 | 50-37-5153 | 5264-15 | 15 | |
| | 35.8 | 32.5 | -5143 | -14 | 14 | |
| | 33.3 | 30 | -5133 | -13 | 13 | |
| | 30.8 | 27.5 | -5123 | -12 | 12 | |
| | 28.3 | 25 | -5113 | -11 | 11 | |
| | 25.8 | 22.5 | -5103 | -10 | 10 | |
| | 23.3 | 20 | -5093 | -09 | 9 | |
| | 21.4 | 20.8 | 17.5 | -5083 | -08 | 8 |
| | 18.9 | 18.3 | 15 | -5073 | -07 | 7 |
| | 16.4 | 15.8 | 12.5 | -5063 | -06 | 6 |
| | 13.9 | 13.3 | 10 | -5053 | -05 | 5 |
| | 11.4 | 10.8 | 7.5 | -5043 | -04 | 4 |
| | 8.9 | 8.3 | 5 | -5033 | -03 | 3 |
| | 6.4 | 5.8 | 2.5 | 50-37-5023 | 5264-02 | 2 |
| C | B | A | EDP NO. | ENG. NO. | 極数 | |

| | | | | | | | |
|---|--|--|--|---|--|--|--|
| 角度 ANGLE ±3° 30以上 OVER ±0.3 10以上 30未滿 UNDER ±0.25 10未滿 UNDER ±0.2 一般公差 GENERAL TOLERANCES | | H 再作図及び変更 (J10590) K.1 記号 LTR 変更内容 REVISION RECORD DR. CHK. DATE 9/17/26 REVISE ONLY ON CAD SYSTEM | | 材料 MATERIAL 66ナイロン UL94V-0 仕上げ FINISH // 適用電線範囲 WIRE RANGE // 被覆外径 INS. RANGE // DRAWN BY K.TOJO '91/7/26 APP'D BY '91/07/30 M.ENOMOTO CHK'D BY '91/07/30 M.FUKUSHIMA 尺度 SCALE 5-1 | | MOLEX-JAPAN CO.,LTD. 日本モレックス株式会社 EDP. NO. 50-37-5**3 ENG. NO. SD-5264-N TITLE 名称 2.5 LOW PROFILE RECEPTACLE HOUSING REV H | |
|---|--|--|--|---|--|--|--|



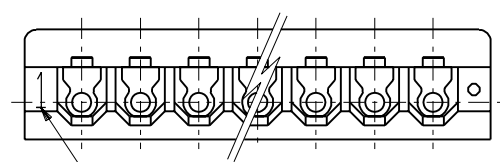
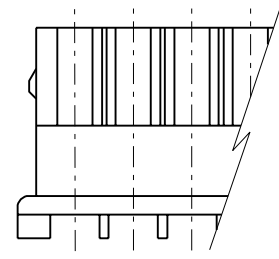
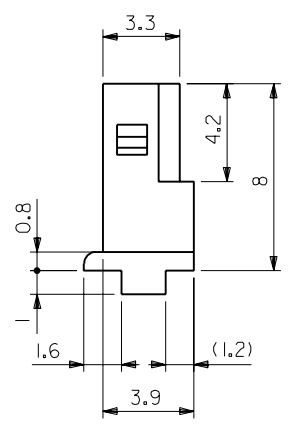
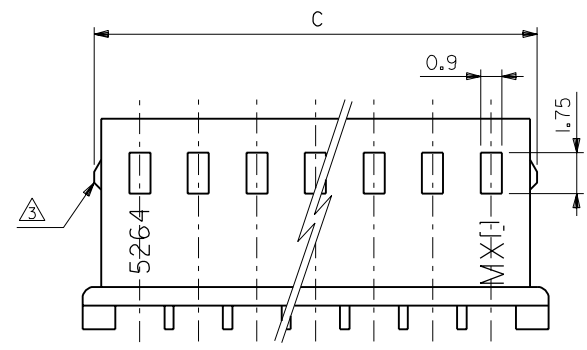
SECT.Z-Z



SECT.Y-Y

NOTES:

1. SUITABLE TERMINAL : 5263SERIES
2. MATES WITH : 5267SERIES,5268SERIES
3. 9 CIRCUITS OR MORE WITHOUT LOOK.



CIRCUIT NO.

| | | | | | | |
|--|------|------|------------|------------|---------|------|
| | 50.8 | 47.5 | 50-37-5203 | 5264-20 | 20 | |
| | 48.3 | 45 | -5193 | -19 | 19 | |
| | 45.8 | 42.5 | -5183 | -18 | 18 | |
| | 43.3 | 40 | -5173 | -17 | 17 | |
| | 40.8 | 37.5 | -5163 | -16 | 16 | |
| | 38.3 | 35 | -5153 | -15 | 15 | |
| | 35.8 | 32.5 | -5143 | -14 | 14 | |
| | 33.3 | 30 | -5133 | -13 | 13 | |
| | 30.8 | 27.5 | -5123 | -12 | 12 | |
| | 28.3 | 25 | -5113 | -11 | 11 | |
| | 25.8 | 22.5 | -5103 | -10 | 10 | |
| | 23.3 | 20 | -5093 | -09 | 9 | |
| | 21.4 | 20.8 | 17.5 | -5083 | -08 | 8 |
| | 18.9 | 18.3 | 15 | -5073 | -07 | 7 |
| | 16.4 | 15.8 | 12.5 | -5063 | -06 | 6 |
| | 13.9 | 13.3 | 10 | -5053 | -05 | 5 |
| | 11.4 | 10.8 | 7.5 | -5043 | -04 | 4 |
| | 8.9 | 8.3 | 5 | -5033 | -03 | 3 |
| | 6.4 | 5.8 | 2.5 | 50-37-5023 | 5264-02 | 2 |
| | C | B | A | EDP NO. | ENG.NO. | CKT. |

| | | | | | | | | |
|---|--|---|--|--|--|---|--|-------|
| 角度 ANGLE ±3° 30以上 OVER ±0.3 10以上 30未滿 UNDER ±0.25 10未滿 UNDER ±0.2 一般公差 GENERAL TOLERANCES | | H REVISED & REDRAWN (J105910) 記号 LTR 変更内容 REVISION RECORD DR. CHK. DATE | | K.T. H.A. 9/11/15 日付 DATE 材料 MATERIAL 66NYLON,UL94V-0 仕上げ FINISH // 適用電線範囲 WIRE RANGE // 被覆外径 INS. RANGE // DRAWN BY K.TOJO '91/11/5 APP'D BY M.ENOMOTO '92/01/15 CHK'D BY M.FUKUSHIMA '92/01/15 尺度 SCALE 5-1 | | MOLEX-JAPAN CO.,LTD. 日本モレックス株式会社 EDP. NO. 50-37-5**3 ENG. NO. SD-5264-N TITLE 名称 2.5 LOW PROFILE RECEPTACLE HOUSING | | REV H |
|---|--|---|--|--|--|---|--|-------|