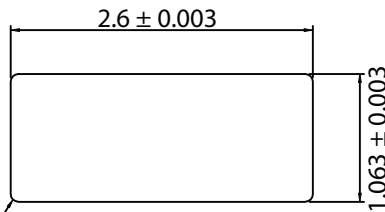
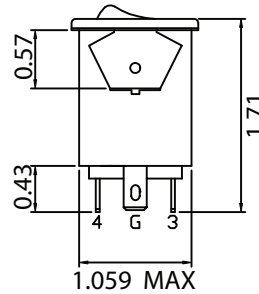
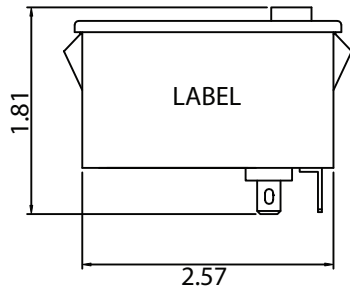
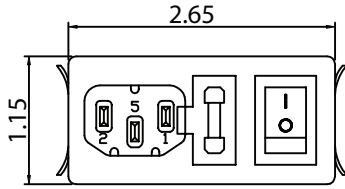


THESE DRAWINGS ARE THE PROPERTY OF QUALTEK ELECTRONICS AND NOT TO BE REPRODUCED FOR OR COMMUNICATED TO A THIRD PARTY WITHOUT THE EXPRESS WRITTEN PERMISSION OF AN OFFICER OF QUALTEK ELECTRONICS.

REVISION			
REV.	DESCRIPTION	DATE	APPROVED
B	RoHS Compliancy	06-01-06	DP
C	Updated Specifications	01-24-08	DP

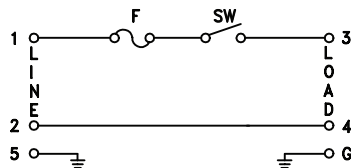
MECHANICAL DIMENSIONS:



R0.04 MAX PANEL CUTOUT

RECOMMENDED PANEL THICKNESS: 0.04~0.07in

ELECTRICAL SCHEMATIC:



ELECTRICAL CHARACTERISTICS:

- 1-1. VOLTAGE RATING.....115/250VAC
- 1-2. CURRENT RATING
  - A. @ 115/250 VAC (UL, CSA) .....6/6 A RMS MAX
  - B. @ 250 VAC (SEMKO) .....6 A RMS MAX
- 1-3. OPERATING FREQUENCY.....50-60Hz
- 1-4. LEAKAGE CURRENT EACH LINE TO GROUND
  - A. AT 115VAC 60Hz.....2uA MAX.
  - B. AT 250VAC 50Hz.....5uA MAX.
- 1-5. HIPOT RATING (FOR ONE MINUTE)
  - A. LINE TO GROUND.....2000 VAC
  - B. LINE TO LINE.....2000 VAC
- 1-6. MINIMUM INSULATION RESISTANCE: @ 500VDC
  - A. LINE & NEUTRAL TO GROUND.....100M OHM
  - B. LINE TO NEUTRAL.....100M OHM
- 1-7. AMBIENT TEMPERATURE ..... 25°C
- 1-8. OPERATING TEMPERATURE ..... -25°C TO +85°C
- 1.9. APPROVALS: UL, CSA, SEMKO
- 1-10. RoHS COMPLIANT

**CONTROLLED**

Dim range (mm)	Tolerance +/- (mm)	Qualtek Electronics Corp. PPC DIVISION		
		Part Number: 762-18/002	RoHS Compliant	
0-1	0.15	Description: MULTI-FUNCTION MODULE		
1-6	0.20			
6-18	0.30			
18-50	0.50		UNIT: in	REV. C
50-120	0.70	Drawn / Date	Checked / Date	Approved / Date
120-250	0.90	B.ZHANG 03-19-04	03-19-04	JJH / 03-19-04
250-500	1.20			