

PLEASE CHECK WWW.MOLEX.COM FOR LATEST PART INFORMATION

Part Number: [0941035006](#)
Status: **Active**
Description: 2.00mm (.079") Pitch SIP Socket, SMT Version, 6 Circuit

Documents:

[3D Model](#) [Product Specification PS-94103-005 \(PDF\)](#)
[Drawing \(PDF\)](#) [RoHS Certificate of Compliance \(PDF\)](#)

General

Product Family	Other Sockets
Series	94103
Component Type	Socket
Product Name	SIP

Physical

Circuits (Loaded)	7
Circuits (maximum)	7
Color - Resin	Black
Durability (mating cycles max)	20
Entry Angle	Vertical
Keying to Mating Part	None
Material - Metal	Phosphor Bronze
Material - Plating Mating	Tin
Material - Plating Termination	Tin
Material - Resin	High Temperature Thermoplastic
PCB Locator	No
PCB Retention	None
Packaging Type	Embossed Tape on Reel
Pitch - Mating Interface (in)	0.079 In
Pitch - Mating Interface (mm)	2.00 mm
Pitch - Term. Interface (in)	0.079 In
Pitch - Term. Interface (mm)	2.00 mm
Plating min: Mating (µin)	120.00
Plating min: Mating (µm)	3.000
Plating min: Termination (µin)	120.00
Plating min: Termination (µm)	3.00
Temperature Range - Operating	-40°C to +105°C
Termination Interface: Style	Surface Mount

Electrical

Current - Maximum per Contact	1A
Voltage - Maximum	125V AC

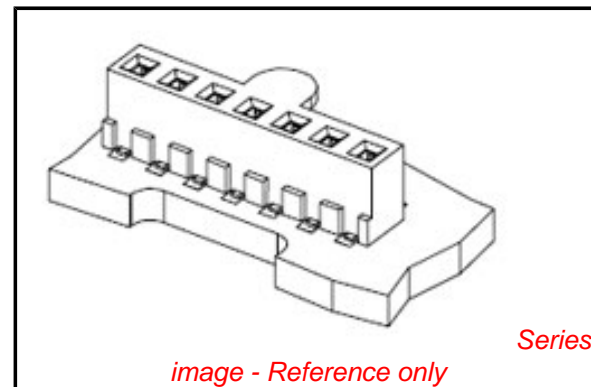
Solder Process Data

Lead-free Process Capability	Reflow Capable (SMT only)
Process Temperature max. C	260

Material Info

Reference - Drawing Numbers

Product Specification	PS-94103-005
Sales Drawing	SD-94103-004



EU RoHS

**ELV and RoHS
Compliant**
**REACH SVHC
Contains SVHC: No**
**Halogen-Free
Status**

China RoHS



**Need more information on product
environmental compliance?**

Email productcompliance@molex.com
 For a multiple part number RoHS Certificate of
 Compliance, [click here](#)

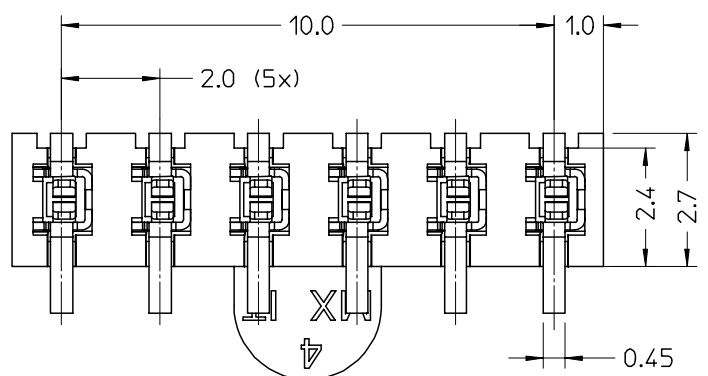
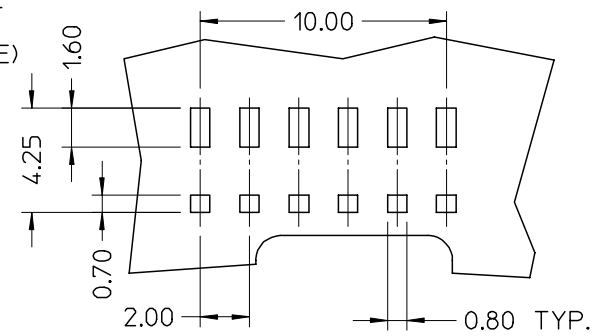
Please visit the [Contact Us](#) section for any
 non-product compliance questions.

Search Parts in this Series

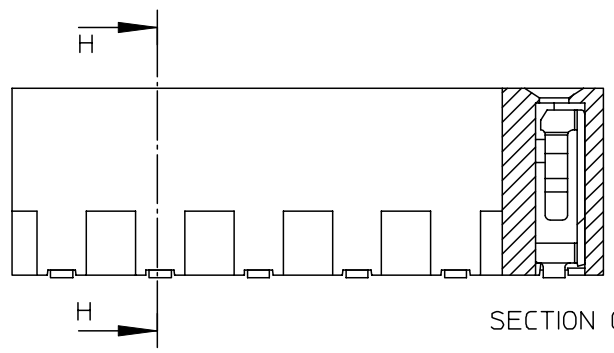
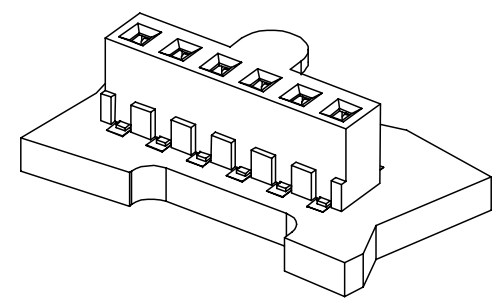
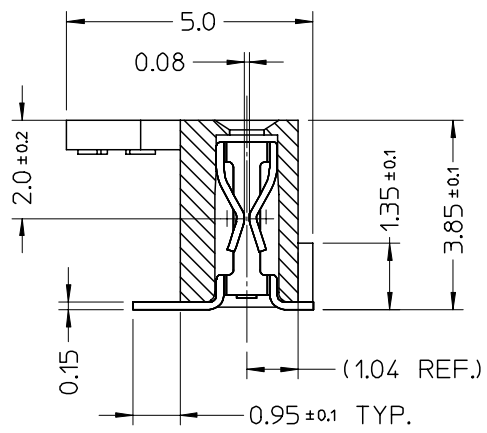
94103Series

10 9 8 7 6 5 4 3 2 1

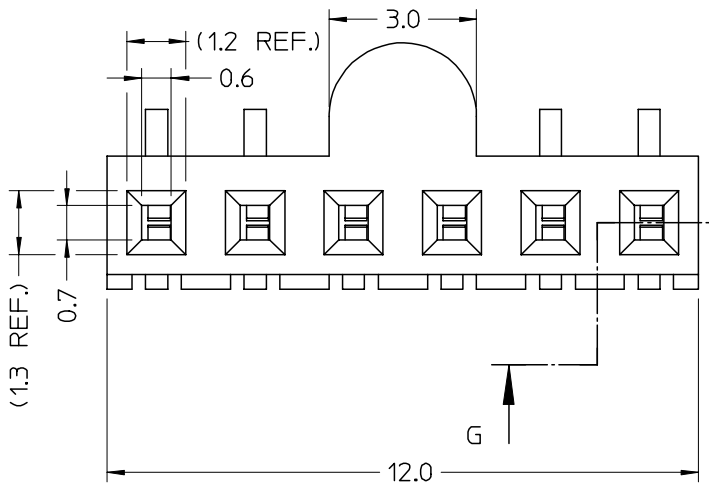
RECOMMENDED PCB LAYOUT
(VIEW FROM COMPONENT SIDE)
SCALE 5:1



SECTION H-H



SECTION G-G



- NOTES
- MATERIALS:
 - HOUSING: BLACK PA 46, 30 % GF, UL 94 V0
 - TERMINALS: 4 um PRETINNED PhBz
 - SMT LEADS COPLANARITY: 0.15 mm MAX
 - PACKAGING: IN TAPE & REEL
 - SPQ: 16800 pcs/BOX (2400 pcs/REEL - 7 REELS/BOX)
 - PRODUCT CHARACTERISTICS: ACCORDING TO PS 94103-005

Std. Descr.: SIP SOCKET SMT 6 CKT

EC NO: Z2006-0182 DRWN: SBARBER 2006/05/16 CHKD: RSANDANO 2006/05/16 APPR: FBI SELLO 2006/05/16	QUALITY SYMBOLS ▽=0 ▽=0	GENERAL TOLERANCES (UNLESS SPECIFIED)		DIMENSION STYLE	SCALE	DESIGN UNITS	FIRST ANGLE PROJECTION	
				MM ONLY	10:1	METRIC		
				mm	INCH	DRAWN BY	DATE	TITLE
		4 PLACES	± ---	± ---		SBARBER	1999/04/20	6 CKT SIP SOCKET SMT VERSION MOLEX INCORPORATED
3 PLACES	± ---	± ---		CHECKED BY	DATE			
2 PLACES	± 0.05	± ---		SSORATO	1999/04/20			
1 PLACE	± 0.10	± ---		APPROVED BY	DATE			
		ANGULAR ± 2 °		RMARTUCC	1999/04/20			
		DRAFT WHERE APPLICABLE MUST REMAIN WITHIN DIMENSIONS		MATERIAL NO.	DOCUMENT NO.	SHEET NO.		
				94103-5006	SD-94103-004	1 OF 1		
				THIS DRAWING CONTAINS INFORMATION THAT IS PROPRIETARY TO MOLEX INCORPORATED AND SHOULD NOT BE USED WITHOUT WRITTEN PERMISSION				

9 8 7 6 5 4 3 2 1