

**PLEASE CHECK WWW.MOLEX.COM FOR LATEST PART INFORMATION**

**Part Number:** [0903253024](#)  
**Status:** **Active**  
**Description:** 1.27mm (.050") Pitch Picoflex® PF-50 Header, Vertical, Low Profile, with PCB Pegs, 24 Circuits

**Documents:**

[3D Model](#) [Product Specification PS-99020-0011 \(PDF\)](#)  
[Drawing \(PDF\)](#) [RoHS Certificate of Compliance \(PDF\)](#)

**General**

|                |                       |
|----------------|-----------------------|
| Product Family | PCB Headers           |
| Series         | <a href="#">90325</a> |
| Application    | Wire-to-Board         |
| Comments       | Low Profile           |
| Product Name   | Picoflex®             |

**Physical**

|                                |                 |
|--------------------------------|-----------------|
| Breakaway                      | No              |
| Circuits (Loaded)              | 24              |
| Color - Resin                  | Black           |
| Durability (mating cycles max) | 100             |
| First Mate / Last Break        | No              |
| Glow-Wire Compliant            | No              |
| Guide to Mating Part           | No              |
| Keying to Mating Part          | None            |
| Lock to Mating Part            | Yes             |
| Material - Metal               | Brass           |
| Material - Plating Mating      | Gold            |
| Material - Resin               | Polyester       |
| Number of Rows                 | 1               |
| Orientation                    | Vertical        |
| PCB Retention                  | Yes             |
| PCB Thickness Recommended (in) | 0.062 In        |
| PCB Thickness Recommended (mm) | 1.60 mm         |
| Packaging Type                 | Bag             |
| Pitch - Mating Interface (in)  | 0.050 In        |
| Pitch - Mating Interface (mm)  | 1.27 mm         |
| Plating min: Mating (µin)      | 30.4            |
| Plating min: Mating (µm)       | 0.76            |
| Plating min: Termination (µin) | 120             |
| Plating min: Termination (µm)  | 3               |
| Polarized to Mating Part       | Yes             |
| Polarized to PCB               | Yes             |
| Shrouded                       | No              |
| Stackable                      | No              |
| Surface Mount Compatible (SMC) | No              |
| Temperature Range - Operating  | -40°C to +105°C |
| Termination Interface: Style   | Through Hole    |

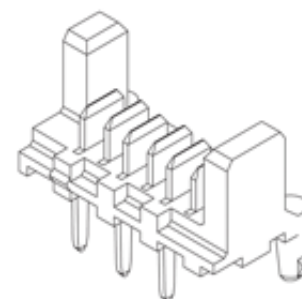
**Electrical**

|                               |      |
|-------------------------------|------|
| Current - Maximum per Contact | 1.2A |
| Voltage - Maximum             | 250V |

**Solder Process Data**

|                              |                        |
|------------------------------|------------------------|
| Lead-free Process Capability | Wave Capable (TH only) |
|------------------------------|------------------------|

**Material Info**



Series

image - Reference only

**EU RoHS**

**ELV and RoHS Compliant**

**REACH SVHC**

**Contains SVHC: No**

**Halogen-Free**

**Status**

**Not Reviewed**

**China RoHS**



**Need more information on product environmental compliance?**

Email [productcompliance@molex.com](mailto:productcompliance@molex.com)  
 For a multiple part number RoHS Certificate of Compliance, [click here](#)

Please visit the [Contact Us](#) section for any non-product compliance questions.

**Search Parts in this Series**

[90325Series](#)

**Mates With**

[90327 IDT Connector](#)

**Reference - Drawing Numbers**

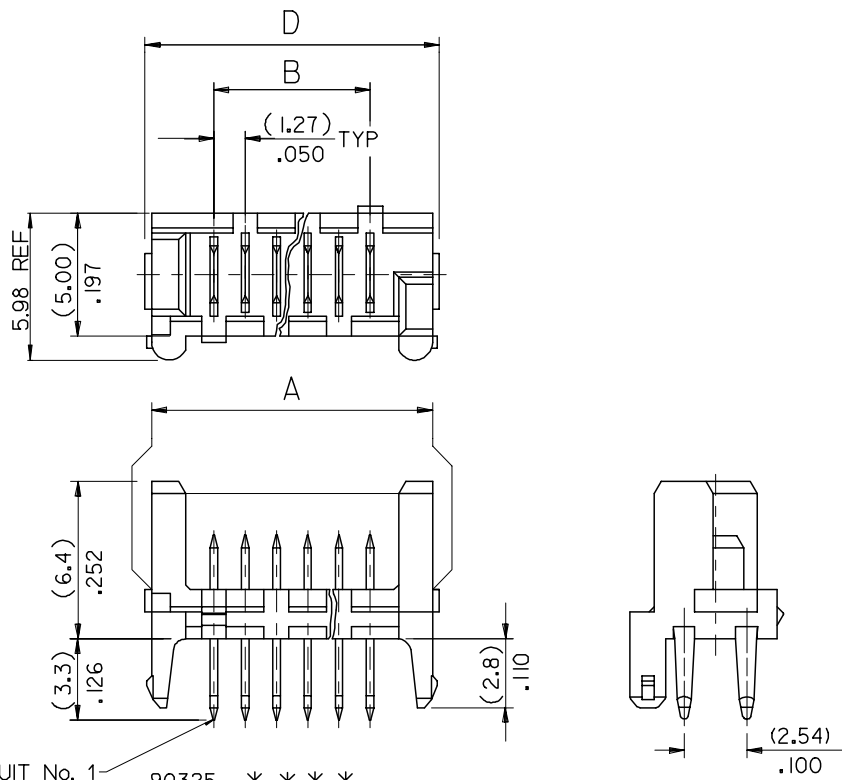
Product Specification  
Sales Drawing

PS-99020-0011  
SDA-90325

This document was generated on 04/21/2010

**PLEASE CHECK [WWW.MOLEX.COM](http://WWW.MOLEX.COM) FOR LATEST PART INFORMATION**

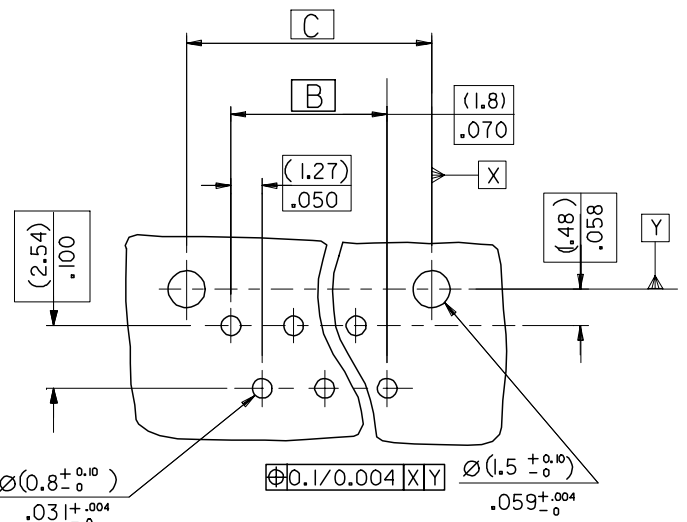
10 9 8 7 6 5 4 3 2 1



|              |             |               |               |               |               |                   |
|--------------|-------------|---------------|---------------|---------------|---------------|-------------------|
| 90325 - **26 | 26          | (36.80)/1.449 | (31.75)/1.250 | (35.35)/1.392 | (37.26)/1.467 | 14                |
| ↑ - **24     | 24          | (34.26)/1.349 | (29.21)/1.150 | (32.81)/1.292 | (34.72)/1.367 | 15                |
| - **22       | 22          | (31.72)/1.249 | (26.67)/1.050 | (30.27)/1.192 | (32.18)/1.267 | 16                |
| - **20       | 20          | (29.18)/1.149 | (24.13)/.950  | (27.73)/1.092 | (29.64)/1.167 | 18                |
| - **18       | 18          | (26.64)/1.049 | (21.59)/.850  | (25.19)/.992  | (27.10)/1.067 | 19                |
| - **16       | 16          | (24.10)/.949  | (19.05)/.750  | (22.65)/.892  | (24.56)/.967  | 22                |
| - **14       | 14          | (21.56)/.849  | (16.51)/.650  | (20.11)/.792  | (22.02)/.867  | 24                |
| - **12       | 12          | (19.02)/.749  | (13.97)/.550  | (17.57)/.692  | (19.48)/.767  | 27                |
| - **10       | 10          | (16.48)/.649  | (11.43)/.450  | (15.03)/.592  | (16.94)/.667  | 32                |
| - **08       | 8           | (13.94)/.549  | (8.89)/.350   | (12.49)/.492  | (14.40)/.567  | 36                |
| ↓ - **06     | 6           | (11.40)/.449  | (6.35)/.250   | (9.95)/.392   | (11.86)/.467  | 44                |
| 90325 - **04 | 4           | (8.86)/.349   | (3.81)/.150   | (7.41)/.292   | (9.32)/.367   | 57                |
| PART NO.     | NO. OF CKTS | DIM. A        | DIM. B        | DIM. C        | DIM. D        | NO. ASSYS IN TUBE |

CIRCUIT No. 1 90325- \* \* \* \*  
 CIRCUIT SIZE 04 CKT TO 26 CKT  
 0 = HOUSING : COLOUR BLACK  
 9 = HOUSING : CUSTOMER SPECIFIC (COLOUR BLACK)  
 0= 3-5um TIN ASSY  
 3= 0.76um GOLD ASSY  
 5= NON STANDARD VOIDED OPTION SEE SHEET 2  
 6= ROUND PEG WITH KINKS OPTION SEE SHEET 3  
 7= 0.76um GOLD, TUBED  
 9= 3-5um TIN ASSY TUBED

PCB LAYOUT VIEWED FROM SOLDER SIDE. BOARD (1.60±0.14) THK .063+0.006 THK.



NOTES:  
 1. HOUSING MATL. POLYESTER PBT 15% GLASS FILLED TO UL94 V-0.  
 2. TER. MATL. BRASS (0.28)/.011 THK  
 PLATING. TIN: (1.27um)/50u" MIN NICKEL UNDER (3-5um)/120-200u" TIN  
 PLATING. GOLD: (1.27um)/50u" MIN. NICKEL UNDER (3-5um)/120-200u" TIN SELECTIVE AND (0.76um)/30u" SELECTIVE GOLD  
 3. CONFORMS TO PRODUCT SPECIFICATION PS-99020-0011

|                                |             |
|--------------------------------|-------------|
| ADD CKT.1 INDICATOR            | DESCRIPTION |
| EC NO: E2007-0083              |             |
| DRWN:DMASZKI,EWI,CZ 2006/09/11 |             |
| CHKD:J.DENNEHY 2006/09/11      |             |
| APPR:J.DENNEHY 2006/09/13      |             |
| AN                             | REV         |

QUALITY SYMBOLS  
 ▽=0  
 ▽=0

|  |                 |            |   |              |                        |
|--|-----------------|------------|---|--------------|------------------------|
| GENERAL TOLERANCES (UNLESS SPECIFIED)                | DIMENSION STYLE |            | SCALE   | DESIGN UNITS | THIRD ANGLE PROJECTION |
|  | MM/IN           |            | 5:1   | METRIC       |                        |
| 4 PLACES ± --- ± ---                                 | DRAWN BY        | DATE       | TITLE   |              |                        |
| 3 PLACES ± --- ± .008                                | DMCN            | 2001/05/29 | HEADER ASSEMBLY   |              |                        |
| 2 PLACES ± 0.20 ± .008                               | CHECKED BY      | DATE       | MOLEX INCORPORATED  |              |                        |
| 1 PLACE ± 0.20 ± ---                                 | ROCONNOR        | 2001/05/29 | MATERIAL NO. SDA-90325  |              |                        |
| ANGULAR ±1/2°  | APPROVED BY     | DATE       | DOCUMENT NO. SHEET NO.  |              |                        |
| DRAFT WHERE APPLICABLE MUST REMAIN WITHIN DIMENSIONS | MWILHITE        | 2001/05/29 | 1 OF 3  |              |                        |
|  | SIZE SEE CHART  |            | THIS DRAWING CONTAINS INFORMATION THAT IS PROPRIETARY TO MOLEX INCORPORATED AND SHOULD NOT BE USED WITHOUT WRITTEN PERMISSION |              |                        |

9 8 7 6 5 4 3 2 1