

PLEASE CHECK WWW.MOLEX.COM FOR LATEST PART INFORMATION

Part Number: [0903257008](#)
Status: **Active**
Description: 1.27mm (.050") Pitch Picoflex® PF-50 Header, Vertical, Low Profile, with PCB Pegs, 8 Circuits, Tube Packaging

Documents:

[3D Model](#) [Product Specification PS-99020-0011 \(PDF\)](#)
[Drawing \(PDF\)](#) [RoHS Certificate of Compliance \(PDF\)](#)

Agency Certification

CSA LR19980
 UL E29179

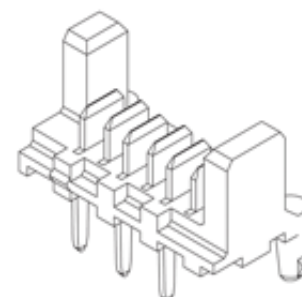
General

Product Family PCB Headers
 Series [90325](#)
 Application Wire-to-Board
 Comments Low Profile
 MolexKits Yes
 Product Name Picoflex®

Physical

Breakaway No
 Circuits (Loaded) 8
 Color - Resin Black
 Durability (mating cycles max) 100
 First Mate / Last Break No
 Flammability 94V-0
 Glow-Wire Compliant No
 Guide to Mating Part No
 Keying to Mating Part None
 Lock to Mating Part Yes
 Material - Metal Brass
 Material - Plating Mating Gold
 Material - Resin Polyester
 Number of Rows 1
 Orientation Vertical
 PCB Retention Yes
 PCB Thickness Recommended (in) 0.062 In
 PCB Thickness Recommended (mm) 1.60 mm
 Packaging Type Tube
 Pitch - Mating Interface (in) 0.050 In
 Pitch - Mating Interface (mm) 1.27 mm
 Plating min: Mating (µin) 30.4
 Plating min: Mating (µm) 0.76
 Plating min: Termination (µin) 120
 Plating min: Termination (µm) 3
 Polarized to Mating Part Yes
 Polarized to PCB Yes
 Shrouded No
 Stackable No
 Surface Mount Compatible (SMC) No
 Temperature Range - Operating -40°C to +105°C
 Termination Interface: Style Through Hole

Electrical



Series

image - Reference only

EU RoHS

ELV and RoHS Compliant
REACH SVHC Contains SVHC: No
Halogen-Free Status
Not Reviewed

China RoHS



Need more information on product environmental compliance?

Email productcompliance@molex.com
 For a multiple part number RoHS Certificate of Compliance, [click here](#)

Please visit the [Contact Us](#) section for any non-product compliance questions.

Search Parts in this Series

[90325Series](#)

Mates With

[90327 IDT Connector](#)

Current - Maximum per Contact	1.2A
Voltage - Maximum	250V

Material Info

Reference - Drawing Numbers

Packaging Specification	PK-90325-001
Product Specification	PS-99020-0011
Sales Drawing	SDA-90325

This document was generated on 06/08/2010

PLEASE CHECK WWW.MOLEX.COM FOR LATEST PART INFORMATION

10 9 8 7 6 5 4 3 2 1



90325 - **26	26	(36.80)/1.449	(31.75)/1.250	(35.35)/1.392	(37.26)/1.467	14
↑ - **24	24	(34.26)/1.349	(29.21)/1.150	(32.81)/1.292	(34.72)/1.367	15
- **22	22	(31.72)/1.249	(26.67)/1.050	(30.27)/1.192	(32.18)/1.267	16
- **20	20	(29.18)/1.149	(24.13)/.950	(27.73)/1.092	(29.64)/1.167	18
- **18	18	(26.64)/1.049	(21.59)/.850	(25.19)/.992	(27.10)/1.067	19
- **16	16	(24.10)/.949	(19.05)/.750	(22.65)/.892	(24.56)/.967	22
- **14	14	(21.56)/.849	(16.51)/.650	(20.11)/.792	(22.02)/.867	24
- **12	12	(19.02)/.749	(13.97)/.550	(17.57)/.692	(19.48)/.767	27
- **10	10	(16.48)/.649	(11.43)/.450	(15.03)/.592	(16.94)/.667	32
- **08	8	(13.94)/.549	(8.89)/.350	(12.49)/.492	(14.40)/.567	36
↓ - **06	6	(11.40)/.449	(6.35)/.250	(9.95)/.392	(11.86)/.467	44
90325 - **04	4	(8.86)/.349	(3.81)/.150	(7.41)/.292	(9.32)/.367	57
PART NO.	NO. OF CKTS	DIM. A	DIM. B	DIM. C	DIM. D	NO. ASSYS IN TUBE

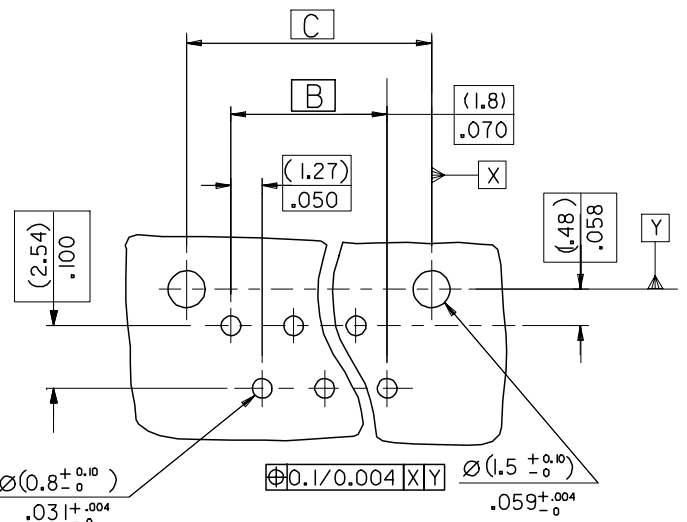
CIRCUIT No. 1 90325-***

CIRCUIT SIZE 04 CKT TO 26 CKT

0 = HOUSING : COLOUR BLACK
 9 = HOUSING : CUSTOMER SPECIFIC (COLOUR BLACK)

0= 3-5um TIN ASSY
 3= 0.76um GOLD ASSY
 5= NON STANDARD VOIDED OPTION SEE SHEET 2
 6= ROUND PEG WITH KINKS OPTION SEE SHEET 3
 7= 0.76um GOLD, TUBED
 9= 3-5um TIN ASSY TUBED

PCB LAYOUT VIEWED FROM SOLDER SIDE. BOARD (1.60 ± 0.14) THK .063 ± 0.006 THK.



NOTES:

- HOUSING MATL. POLYESTER PBT 15% GLASS FILLED TO UL94 V-0.
- TER. MATL. BRASS (0.28)/.011 THK
 PLATING. TIN: (1.27um)/50u" MIN NICKEL UNDER (3-5um)/120-200u" TIN
 PLATING. GOLD: (1.27um)/50u" MIN. NICKEL UNDER (3-5um)/120-200u" TIN SELECTIVE AND (0.76um)/30u" SELECTIVE GOLD
- CONFORMS TO PRODUCT SPECIFICATION PS-99020-0011

ADD CKT.1 INDICATOR	DESCRIPTION	QUALITY SYMBOLS
EC NO: E2007-0083	DRWN:DMASZKI/EMI/CZ 2006/09/11	▽=0
CHKD:J.DENNEHY 2006/09/11	APPR:J.DENNEHY 2006/09/13	▽=0
AN	REV	

GENERAL TOLERANCES (UNLESS SPECIFIED)		DIMENSION STYLE		SCALE	DESIGN UNITS	THIRD ANGLE PROJECTION	
		MM/IN		5:1	METRIC		
4 PLACES	± ---	± ---	DMCN	DRAWN BY DATE		TITLE	
3 PLACES	± ---	± .008	ROCONNOR	2001/05/29		HEADER ASSEMBLY	
2 PLACES	± 0.20	± .008	APPROVED BY DATE	2001/05/29		MOLEX INCORPORATED	
1 PLACE	± 0.20	± ---	MWILHITE	2001/05/29		MATERIAL NO. DOCUMENT NO.	
ANGULAR ±1/2°		DRAFT WHERE APPLICABLE MUST REMAIN WITHIN DIMENSIONS		SEE CHART		SDA-90325	
		SIZE A3		THIS DRAWING CONTAINS INFORMATION THAT IS PROPRIETARY TO MOLEX INCORPORATED AND SHOULD NOT BE USED WITHOUT WRITTEN PERMISSION		SHEET NO. 1 OF 3	

9 8 7 6 5 4 3 2 1