

PLEASE CHECK WWW.MOLEX.COM FOR LATEST PART INFORMATION

Part Number: [0643261009](#)
Status: **Active**
Overview: [cmc connectors](#)
Description: 2.50 mm (.098"), 4.20mm (.165") and 8.40mm, Power CMC Receptacles, 22 Circuits, Right Wire Output, Black Coding with Rear Seal Cover

Documents:
[Drawing \(PDF\)](#)

[RoHS Certificate of Compliance \(PDF\)](#)

General

Product Family	Crimp Housings
Series	64326
Comments	* Current tested on a fully loaded connector, current for temperature increase of 40°C. Current max = 26.0A for 2.8mm Terminal (5.0mm² wire), 4.5A for 0.635mm Terminal (0.75mm² wire)
Overview	cmc connectors
Product Name	CMC

Physical

Circuits (maximum)	22
Circuits Detail	2 x 2.80mm (.110") terminals high current, 20 x 0.635mm (.025") terminals signal pin
Color - Resin	Blue
Gender	Female
Glow-Wire Compliant	No
Keying to Mating Part	Yes
Lock to Mating Part	Yes
Material - Resin	Polyester
Number of Rows	4
Packaging Type	Carton
Panel Mount	No
Pitch - Mating Interface (in)	0.098 In, 0.165 In, 0.330 In
Pitch - Mating Interface (mm)	2.50 mm, 4.20 mm, 8.40 mm
Polarized to Mating Part	Yes
Stackable	No
Temperature Range - Operating	-40°C to +125°C

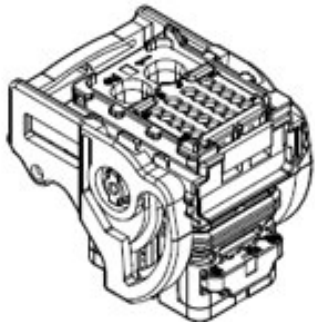
Electrical

Current - Maximum per Contact	26A, 4.5A
-------------------------------	-----------

Material Info

Reference - Drawing Numbers

Application Specification	AS-64326-001
Sales Drawing	SD-64326-001, SD-64326-002



Series

image - Reference only

EU RoHS
ELV and RoHS
Compliant
REACH SVHC
Not Reviewed
Halogen-Free
Status

China RoHS



Need more information on product environmental compliance?

Email productcompliance@molex.com
For a multiple part number RoHS Certificate of Compliance, [click here](#)

Please visit the [Contact Us](#) section for any non-product compliance questions.

Search Parts in this Series
[64326Series](#)

Mates With
No free available mating header, please contact Product Manager

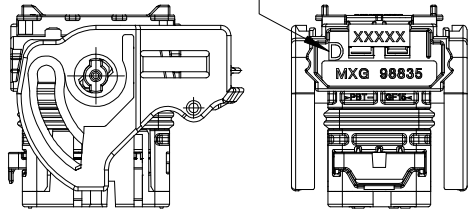
Use With
Terminals [64322](#) CP 0.635mm (.025"), [64324](#) CP 2.80mm (.110"), [643251010](#) Blind Plugs for CP 0.635mm (.025") cavity [643251091](#) Seal Plug for CP 2.80mm (.110") cavity, Wire Cap [643191201](#)

PLEASE CHECK WWW.MOLEX.COM FOR LATEST PART INFORMATION

FEMALE MODULE 22 WAY WITH REAR SEAL COVER CMC 22 WAY

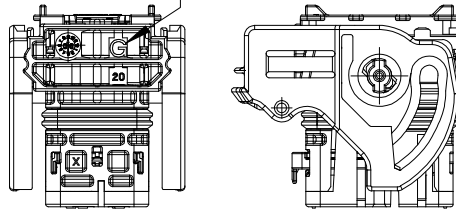
FEMALE MODULE RIGHT WIRE OUTPUT

RIGHT MARKING: "D"



FEMALE MODULE LEFT WIRE OUTPUT

LEFT MARKING: "G"



MOLEX PART NUMBERS

COLOR

0643261001

BLACK

0643261005

BROWN

0643261009

BLUE

MOLEX PART NUMBERS

COLOR

0643261002

BLACK

0643261006

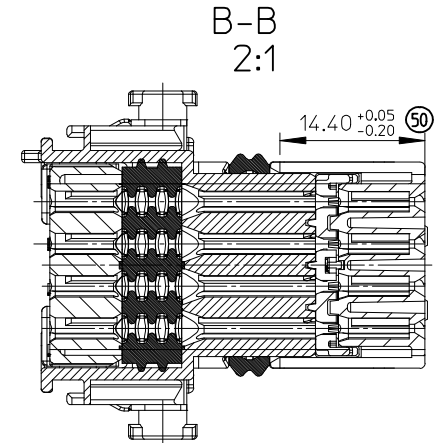
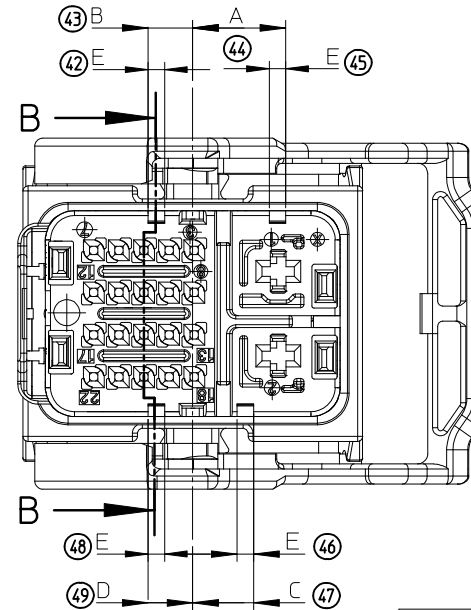
BROWN

0643261010

BLUE

ASSOCIATED TERMINALS

CAVITIES N°	TERMINAL	PLATING	MOLEX P/N°	WIRE SEAL P/N°	MIN / MAX WIRE INSULATION DIAMETER
1 to 2	CP2.8 0.50mm2 to 1mm2	Tin plated	0643241049	0643251162	Ø1.40 min / Ø2.15 Max
		Gold plated	0643241149		
	>1mm2 to 2mm2	Tin plated	0643241039	0643251175	Ø2.10 min / Ø2.80 Max
		Gold plated	0643241139		
	>2mm2 to 3mm2	Tin plated	0643241029	0643251188	Ø2.65 min / Ø3.45 Max
		Gold plated	0643241129		
	>3mm2 to 5mm2	Tin plated	0643241019	0643251196	Ø3.40 min / Ø4.00 Max
		Gold plated	0643241119		
3 to 22	CP0.6 0.35mm2	Tin plated	0643221019		Ø1.25 min / Ø1.40 Max
		Gold plated	0643221229		
	CP0.6 0.50mm2	Tin plated	0643221039		Ø1.40 min / Ø1.70 Max
		Gold plated	0643221239		
	CP0.6 0.75mm2	Tin plated	0643221029		Ø1.60 min / Ø1.90 Max
		Gold plated	0643221219		

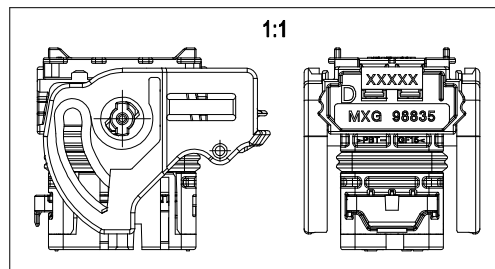


CODINGS

COLOR	A $\begin{smallmatrix} +0.10 \\ 0 \end{smallmatrix}$	B $\begin{smallmatrix} +0.10 \\ 0 \end{smallmatrix}$	C $\begin{smallmatrix} +0.10 \\ 0 \end{smallmatrix}$	D $\begin{smallmatrix} +0.10 \\ 0 \end{smallmatrix}$	E $\begin{smallmatrix} +0.10 \\ 0 \end{smallmatrix}$
BLACK	9.2	4.4	6.0	4.4	1.6
BROWN	6.0	7.6	9.2	9.2	1.6
BLUE	7.55	6.0	9.15	6.0	1.6

NOTES:

- FOR ILLUSTRATION PURPOSE THE FEMALE MODULE SHOWN IS THE RIGHT WIRE OUTPUT "D", CODING BLACK
- APPLICATION SPECIFICATION: AS-64326-001
- THE ASSEMBLED FEMALE MODULE IS ASSEMBLED WITH THE COVER P/N°0643191201
- FOR 0.6 CAVITIES USE PLUGS P/N°:0643251010
- FOR 2.8 CAVITIES USE CAP SEALS P/N°: 0643251091
- PART WEIGHT: 31.000 g



FIRST RELEASE
EC NO: G2009-0122
DRAWING: DESBRUERES 2008/12/19
CHKD: O. PLESSIS 2008/12/19
APPR: C. BOUCHAN 2009/01/12

QUALITY
SYMBOLS
DESCRIPTION
REV

GENERAL TOLERANCES (UNLESS SPECIFIED)

	mm	INCH
4 PLACES	± ---	± ---
3 PLACES	± ---	± ---
2 PLACES	± 0.05	± ---
1 PLACE	± 0.1	± ---
ANGULAR ± 2 °		

DRAFT WHERE APPLICABLE
MUST REMAIN
WITHIN DIMENSIONS

DIMENSION STYLE MM ONLY

DRAWN BY	DATE
G. DESBRUERES	2008/10/02
CHECKED BY	DATE
O. PLESSIS	2008/10/02
APPROVED BY	DATE
C. BOUCHAN	2008/10/03
MATERIAL NO.	

SCALE 1:1

DESIGN UNITS METRIC

FIRST ANGLE PROJECTION

CMC FEMALE MODULE 22W
GENERIC SALES DRAWING



MOLEX INCORPORATED

DOCUMENT NO.

SD-64326-001

SHEET NO.

1 OF 3

SIZE
A3

THIS DRAWING CONTAINS INFORMATION THAT IS PROPRIETARY TO MOLEX INCORPORATED AND SHOULD NOT BE USED WITHOUT WRITTEN PERMISSION

10

9

8

7

6

5

4

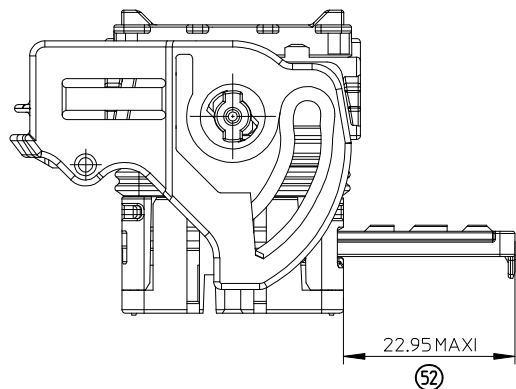
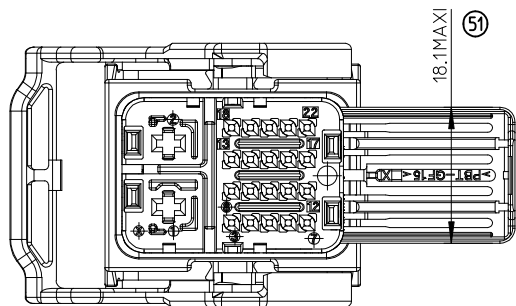
3

2

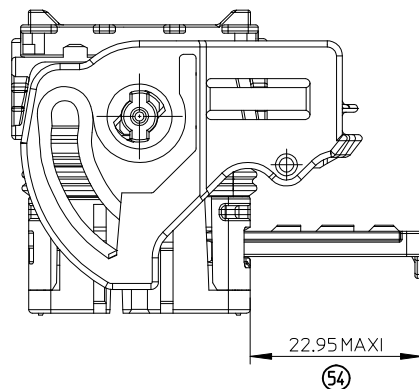
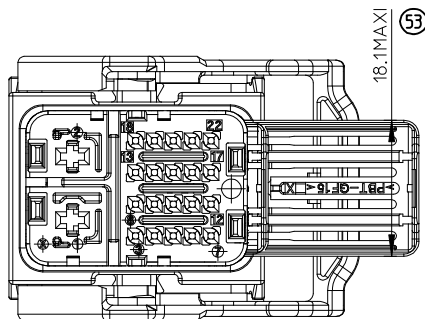
1

FEMALE MODULE OVERALLS - T.P.A IN POSITION TO FIT TERMINALS

FEMALE MODULE - RIGHT WIRE OUTPUT

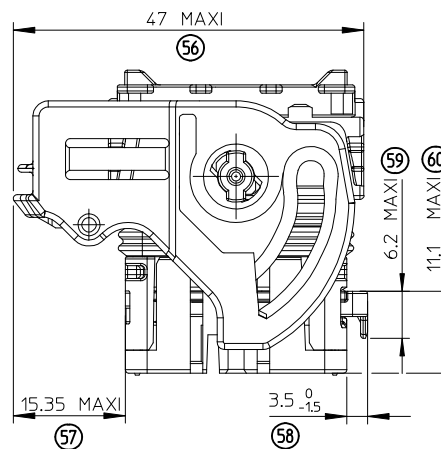
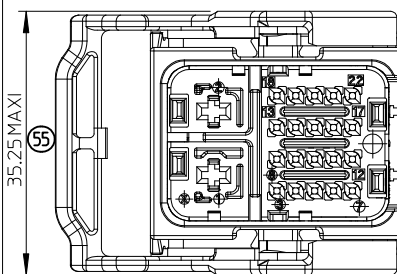


FEMALE MODULE - LEFT WIRE OUTPUT

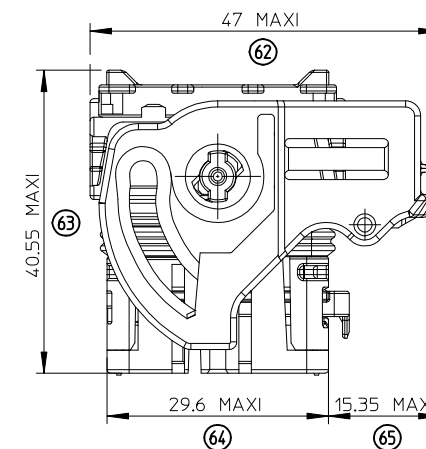
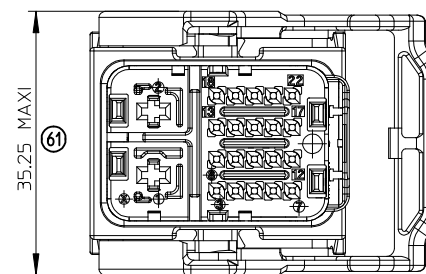


FEMALE MODULE OVERALLS - T.P.A IN DELIVERY POSITION

FEMALE MODULE - RIGHT WIRE OUTPUT



FEMALE MODULE - LEFT WIRE OUTPUT



FIRST RELEASE

EC NO: G2009-0122

DRWN:DESBRUERES 2008/12/19

CHKD:O.PLESSIS 2008/12/19

APPR:CBOUCHAN 2009/01/12

REV DESCRIPTION

1

QUALITY SYMBOLS

GENERAL TOLERANCES (UNLESS SPECIFIED)

	mm	INCH
4 PLACES	± ---	± ---
3 PLACES	± ---	± ---
2 PLACES	± 0.05	± ---
1 PLACE	± 0.1	± ---

ANGULAR ± 2 °

DRAFT WHERE APPLICABLE
MUST REMAIN
WITHIN DIMENSIONSDIMENSION STYLE
MM ONLY

DRAWN BY	DATE
G.DESBRUERES	2008/10/02
CHECKED BY	DATE
O.PLESSIS	2008/10/02
APPROVED BY	DATE
C.BOUCHAN	2008/10/03
MATERIAL NO.	

SEE SHEET 1

SIZE
A3

THIS DRAWING CONTAINS INFORMATION THAT IS PROPRIETARY TO MOLEX INCORPORATED AND SHOULD NOT BE USED WITHOUT WRITTEN PERMISSION

SCALE
1:1DESIGN UNITS
METRICFIRST ANGLE
PROJECTIONTITLE
CMC FEMALE MODULE 22W
GENERIC SALES DRAWING

MOLEX INCORPORATED

DOCUMENT NO.

SD-64326-001

SHEET NO.

3 OF 3

9

8

7

6

5

4

3

2

1

HOUSING OVERALLS - MALE TERMINALS AND WALLS FOR PROTECTION IMPLANTATION

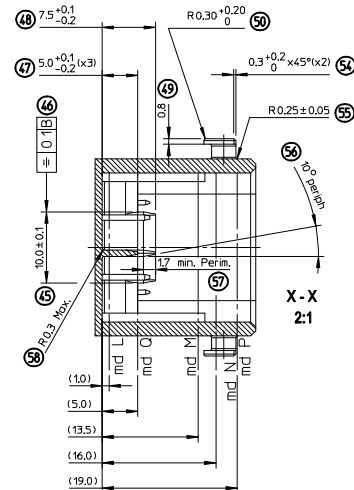
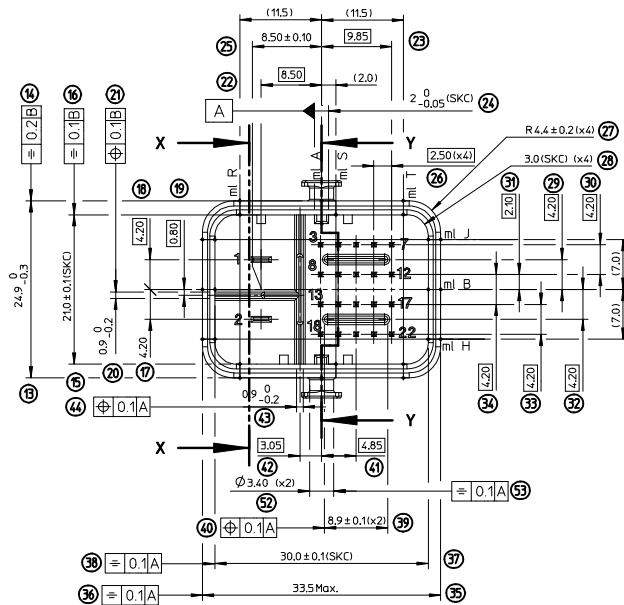
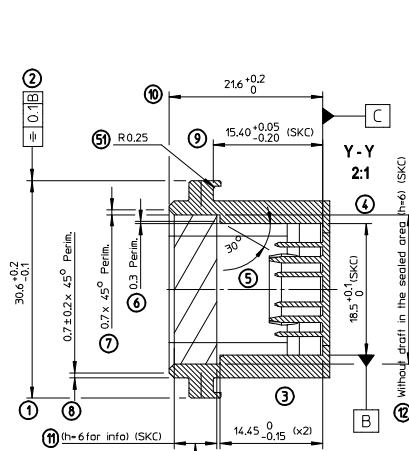
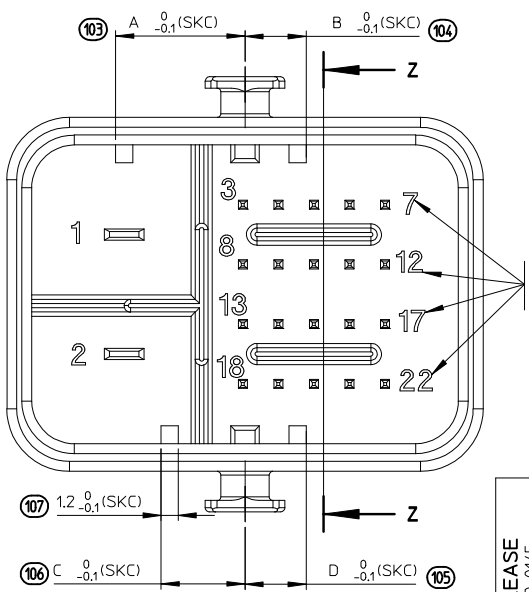
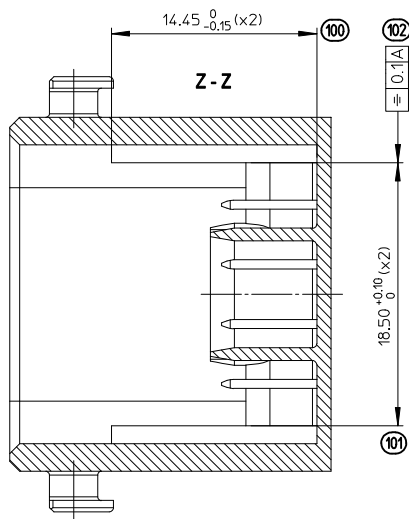
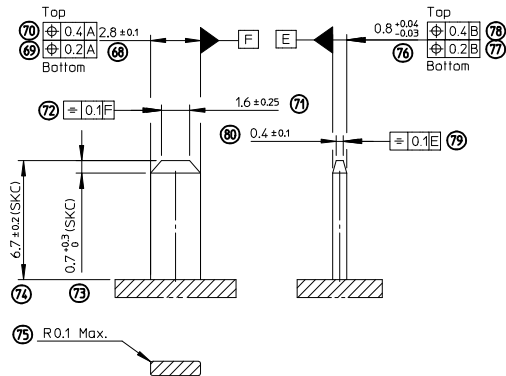


CHART MEASURES FOR INTERFACE

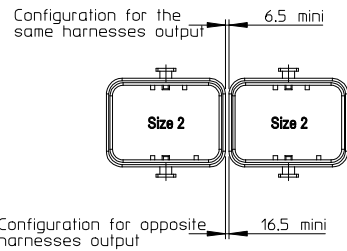
NUMB.	DIMENSION	MEASURE LINE	MEASURE DEPTH
35	33.5 MAXI	B H J	P
37	30 ± 0.1	B H J	N P
	29.8 mini 30.1 MAXI	B H J	L
15	21 ± 0.1	R T	L N P
		S	L
		A	N P
	20.8 mini 21.1 MAXI	R S T	L
13	24.9 0/-0.3	A R T	P
10	21.6 ± 0.2/0	MAX / MIN	
28	R3.0 ± 0.1		N P
4	18.5 ± 0.1/0	A	L M Q
107	1.2 0/-0.1	CODING	L M
101	18.5 ± 0.1/0	CODING	L M
103/105/106	9.1 0/-0.1	CODING	L M
103/104	7.5 0/-0.1	CODING	L M
103/104/105/106	5.9 0/-0.1	CODING	L M
104/105	4.3 0/-0.1	CODING	L M



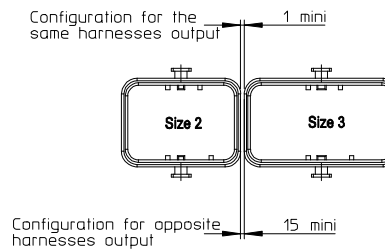
TAB 2.8 DEFINITION



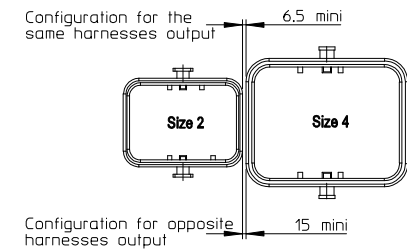
CONFIGURATION FOR 2 INTERFACES SIZE 2



CONFIGURATION FOR INTERFACES SIZE 2 & 3

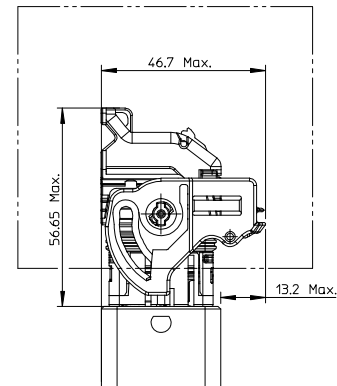
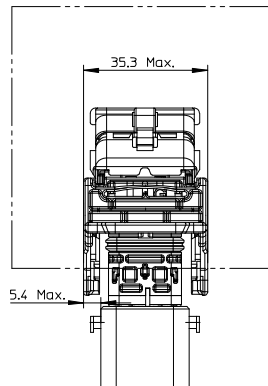


CONFIGURATION FOR INTERFACES SIZE 2 & 4

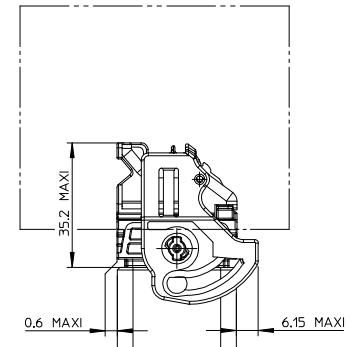


FEMALE HOUSING OVERALLS - MATING & UNMATING WITH HEADER

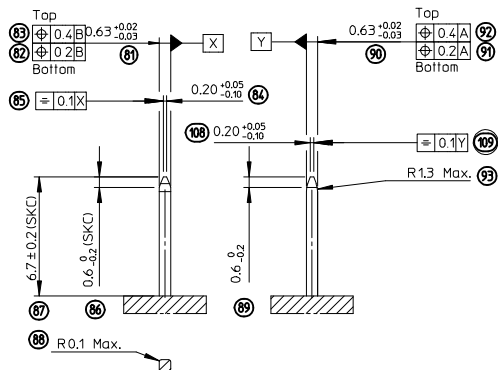
OVERALLS FOR MATING & UNMATING



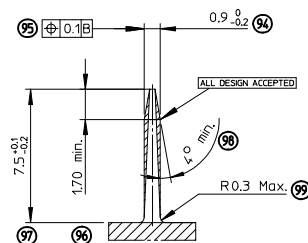
LOCKED FEMALE HOUSING OVERALL DIMENSIONS



PIN 0.635 DEFINITION



WALL FOR PROTECTION DEFINITION



(SKC) SPECIAL KEY CHARACTERISTICS

- ☒ DENOTES S.P.C DIMENSIONS
- ⊗ DENOTES CRITICAL DIMENSIONS
- DENOTES FUNCTIONAL DIMENSIONS

QUANTITY PER INDIVIDUAL SHEET

0 0 0 (SKC) 4

FIRST RELEASE

EC NO: G2009-0145
 DRAWN: G. DESBRUERES 2008/12/11
 CHKD: O. PLESSIS 2008/12/11
 APPR: C. BOUCHAN 2008/12/16

REV DESCRIPTION

GENERAL TOLERANCES (UNLESS SPECIFIED)

	mm	INCH
4 PLACES	± ---	± ---
3 PLACES	± ---	± ---
2 PLACES	± 0.05	± ---
1 PLACE	± 0.1	± ---
ANGULAR ± 2 °		

DRAFT WHERE APPLICABLE
MUST REMAIN
WITHIN DIMENSIONSDIMENSION STYLE
MM ONLY

DRAWN BY	DATE
G. DESBRUERES	2008/10/09
CHECKED BY	DATE
O. PLESSIS	2008/10/09
APPROVED BY	DATE
C. BOUCHAN	2008/10/10
MATERIAL NO.	N/A

SIZE A2 THIS DRAWING CONTAINS INFORMATION THAT IS PROPRIETARY TO MOLEX INCORPORATED AND SHOULD NOT BE USED WITHOUT WRITTEN PERMISSION

SCALE
2:1DESIGN UNITS
METRICFIRST ANGLE
PROJECTION

TITLE
 INTERFACE FOR HYBRIDE
 MODULE 22CKT CMC
 GENERIC SALES DRAWING

MOLEX MOLEX INCORPORATED

DOCUMENT NO. SD-64326-002 SHEET NO. 2 OF 2