

PLEASE CHECK WWW.MOLEX.COM FOR LATEST PART INFORMATION

Part Number: [0430250408](#)
Status: **Active**
Overview: [microfit_30](#)
Description: 3.00mm (.118") Pitch Micro-Fit 3.0™ Receptacle Housing, Single Row, 4 Circuits, Halogen Free, Glow Wire Compatible

Documents:

[3D Model](#) [Product Specification PS-43045 \(PDF\)](#)
[Drawing \(PDF\)](#) [RoHS Certificate of Compliance \(PDF\)](#)

Agency Certification

CSA LR19980
TUV R72081037
UL E29179

General

Product Family Crimp Housings
Series [43025](#)
Comments Polarized to Mating Part
Overview [microfit_30](#)
Product Name Micro-Fit 3.0™

Physical

Circuits (maximum) 4
Circuits Detail 4
Color - Resin Black
Flammability 94V-0
Gender Female
Glow-Wire Compliant Yes
Keying to Mating Part None
Lock to Mating Part Yes
Material - Resin Polyester
Number of Rows 2
Packaging Type Bag
Panel Mount No
Pitch - Mating Interface (in) 0.118 In
Pitch - Mating Interface (mm) 3.00 mm
Polarized to Mating Part Yes
Stackable No
Temperature Range - Operating -40°C to +105°C

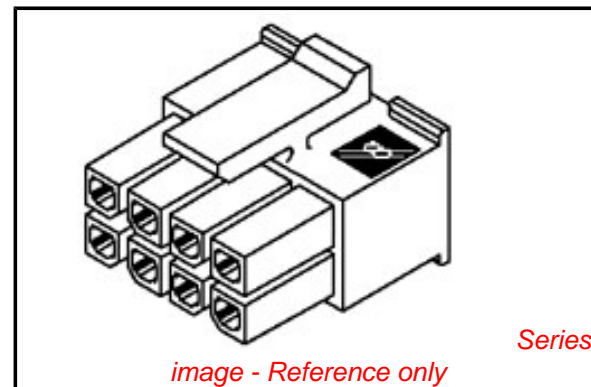
Electrical

Current - Maximum per Contact 5A

Material Info

Reference - Drawing Numbers

Packaging Specification PK-43025-001
Product Specification PS-43045
Sales Drawing SD-43025-001
Test Summary TS-43045-001



EU RoHS

ELV and RoHS Compliant
REACH SVHC
Contains SVHC: No
Halogen-Free Status

China RoHS



Need more information on product environmental compliance?

Email productcompliance@molex.com
For a multiple part number RoHS Certificate of Compliance, [click here](#)

Please visit the [Contact Us](#) section for any non-product compliance questions.

Search Parts in this Series

[43025Series](#)

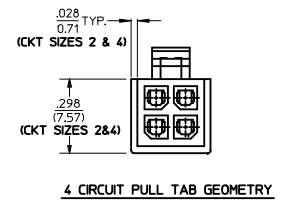
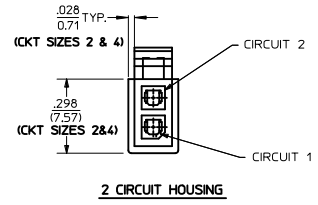
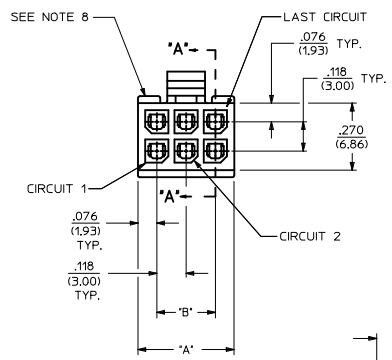
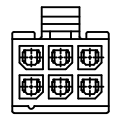
Mates With

Micro-Fit 3.0™ Plug Housing [43020](#). Micro-Fit 3.0™ Header [43045](#). Micro-Fit 3.0™ Test Plug [44242](#)

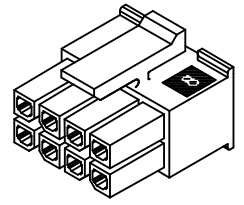
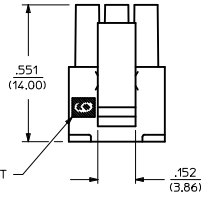
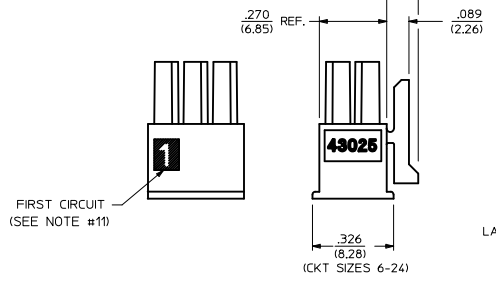
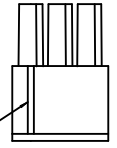
Use With

Micro-Fit 3.0™ Crimp Terminal [43030](#)

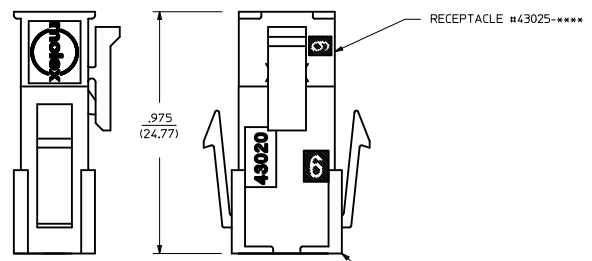
| PART CHARACTERISTICS | | CKT. NO. | DIM. 'A' | DIM. 'B' |
|----------------------|----------------------|----------|---------------|---------------|
| NUMBER OF POSITION | ASSEMBLY ITEM NUMBER | | | |
| 02 | 43025-0208 | 2 | .152/(3.86) | N/A |
| 04 | 43025-0408 | 4 | .270/(6.85) | .118/(3.00) |
| 06 | 43025-0608 | 6 | .388/(9.85) | .236/(6.00) |
| 08 | 43025-0808 | 8 | .506/(12.85) | .354/(9.00) |
| 10 | 43025-1008 | 10 | .624/(15.85) | .472/(12.00) |
| 12 | 43025-1208 | 12 | .742/(18.85) | .591/(15.00) |
| 14 | 43025-1408 | 14 | .860/(21.85) | .709/(18.00) |
| 16 | 43025-1608 | 16 | .978/(24.85) | .827/(21.00) |
| 18 | NOT TOOLED | 18 | 1.096/(27.85) | .945/(24.00) |
| 20 | NOT TOOLED | 20 | 1.215/(30.85) | 1.063/(27.00) |
| 22 | NOT TOOLED | 22 | 1.333/(33.85) | 1.181/(30.00) |
| 24 | 43025-2408 | 24 | 1.451/(36.85) | 1.299/(33.00) |



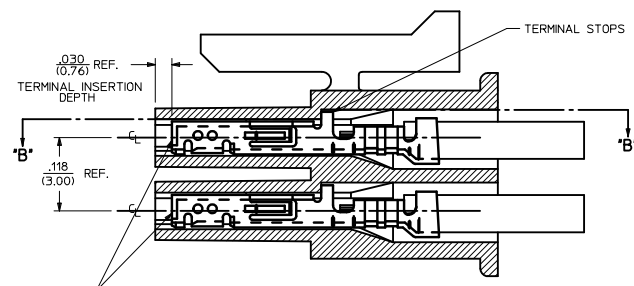
HOUSING SHOWN WITH OPTIONAL FIRST CIRCUIT IDENTIFIER RIB (SEE NOTE #11)



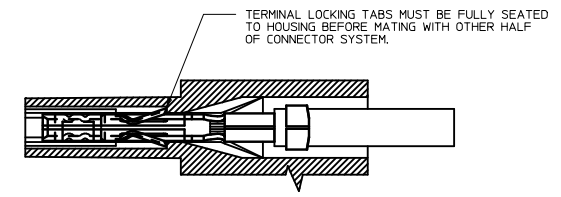
RECEPTACLE ISO VIEW (8 CIRCUIT SHOWN) (SEE NOTE 9 FOR TESTING)



MATED MICRO-FIT CONNECTOR



SECTION "A"- "A" WITH TERMINAL (SCALE 10:1)



SECTION "B"- "B" (SCALE 10:1)

- NOTES:**
- HOUSING MATERIAL: UNFILLED NYLON 6, RATED UL 94V-0, IEC 60335-1, 4TH EDITION GLOW WIRE CAPABLE, COLOR IS BLACK.
 - FINISH: N/A
 - PRODUCT SPECIFICATION: PS-43045
 - PACKAGING SPECIFICATION: PK-43025-001
 - THIS RECEPTACLE MATES WITH 43020, 43045.
 - THIS RECEPTACLE TO BE USED WITH MOLEX FEMALE TERMINAL #43030-****. SEE SECTION "A"- "A" FOR TERMINAL ORIENTATION IN HOUSING.
 - FOR OVERMOLDING PARAMETERS SEE ENGINEERING SPECIFICATION #SDES-43025-1000.
 - TOP PULL TABS ARE NOT AVAILABLE ON 2 AND 4 CIRCUIT PARTS.
 - MOLEX RECOMMENDS THE USE OF MICRO-FIT TEST PLUG, SERIES NO. 44242-**** WHENEVER TESTING IS PERFORMED. TEST PLUGS MUST NOT BE USED FOR MAKE OR BREAK UNDER LOAD. MOLEX DOES NOT RECOMMEND USING STANDARD MATING COMPONENTS FOR HARNESS TESTING PURPOSES.
 - SOME HOUSINGS MAY HAVE A SMALL GATE BLEMISH NEAR THE GATE THAT DOES NOT AFFECT FUNCTIONALITY.
 - HOUSINGS MAY HAVE EITHER AN IDENTIFIER RIB OR "1" SYMBOL ENGRAVE TO INDICATE CIRCUIT #1.
 - THIS PART CONFORMS TO CLASS 'B' REQUIREMENTS OF COSMETIC SPECIFICATION PS-45499-002.

| | | | | | | | | | |
|---|-------------------------------|---------------------------------------|----------------------|------------------------|----------------------|--------------|--------------|------------------------|--|
| ADD PK SPEC IEC NO: UCP2010-0075 09/11/18 09/11/25 09/11/25 CHIKR: BELL APPR: FSMITH 2009/11/30 | QUALITY SYMBOLS ▽=0 ▽=0 | GENERAL TOLERANCES (UNLESS SPECIFIED) | | DIMENSION STYLE | | SCALE | DESIGN UNITS | THIRD ANGLE PROJECTION | |
| | | | | IN/MM | | --- | METRIC | | |
| | | 4 PLACES ± --- ± --- | 3 PLACES ± --- ± --- | 2 PLACES ± 0.25 ± 0.14 | 1 PLACE ± 0.35 ± --- | DRAWN BY | DATE | TITLE | |
| | | ANGULAR ±1/2° | | | | CHKD BY | DATE | | |
| DRAFT WHERE APPLICABLE MUST REMAIN WITHIN DIMENSIONS | | SEE CHART | | APPROVED BY | DATE | MATERIAL NO. | | DOCUMENT NO. | |
| | | | | FSMITH | 2008/02/02 | SD-43025-001 | | SHEET NO. 1 OF 1 | |
| THIS DRAWING CONTAINS INFORMATION THAT IS PROPRIETARY TO MOLEX INCORPORATED AND SHOULD NOT BE USED WITHOUT WRITTEN PERMISSION | | | | | | | | | |