

PLEASE CHECK WWW.MOLEX.COM FOR LATEST PART INFORMATION

Part Number: **0684291815**
Status: **Planned for Obsolescence**
Description: 5.05mm (.198") Pitch Wire-To-Board Connector Housing, 3 Raw, 18 Circuits

Documents:

[3D Model](#) [Product Specification PS-49003-001 \(PDF\)](#)
[Drawing \(PDF\)](#) [RoHS Certificate of Compliance \(PDF\)](#)

General

Product Family PCB Headers
 Series [68429](#)
 Application Wire-to-Board
 Product Name N/A

Physical

Breakaway No
 Circuits (Loaded) 18
 Circuits (maximum) 18
 Durability (mating cycles max) 30
 First Mate / Last Break No
 Glow-Wire Compliant No
 Guide to Mating Part No
 Keying to Mating Part None
 Lock to Mating Part Yes
 Mated Height (in) 0.984 In, 1.016 In
 Mated Height (mm) 25.00 mm, 25.80 mm
 Material - Plating Mating Tin
 Material - Plating Termination Tin
 Number of Rows 3
 Orientation Vertical
 PC Tail Length (in) 0.118 In
 PC Tail Length (mm) 3.00 mm
 PCB Locator No
 PCB Retention Yes
 PCB Thickness Recommended (in) 0.070 In
 PCB Thickness Recommended (mm) 1.80 mm
 Packaging Type Bag
 Pitch - Mating Interface (in) 0.198 In
 Pitch - Mating Interface (mm) 5.03 mm
 Polarized to Mating Part Yes
 Shrouded Partial
 Stackable Yes
 Temperature Range - Operating -40°C to +120°C
 Termination Interface: Style Through Hole

Electrical

Current - Maximum per Contact 4A
 Voltage - Maximum 250V DC

Material Info

Reference - Drawing Numbers

Product Specification PS-49003-001
 Sales Drawing SD-68429-001

EU RoHS

**ELV and RoHS
 Compliant**
**REACH SVHC
 Contains SVHC: No**
**Halogen-Free
 Status
 Not Reviewed**

China RoHS



**Need more information on product
 environmental compliance?**

Email productcompliance@molex.com
 For a multiple part number RoHS Certificate of
 Compliance, [click here](#)

Please visit the [Contact Us](#) section for any
 non-product compliance questions.

Search Parts in this Series

[68429Series](#)

Mates With

[49003 Wire-to-Board Header](#)

This document was generated on 06/07/2010

PLEASE CHECK WWW.MOLEX.COM FOR LATEST PART INFORMATION

DWG. NO.
SD-68429-001

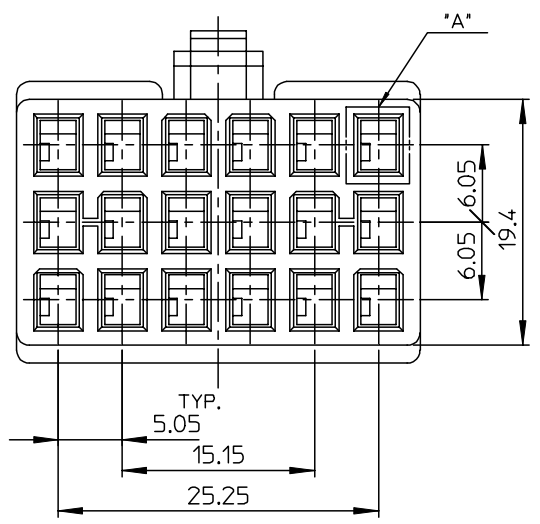
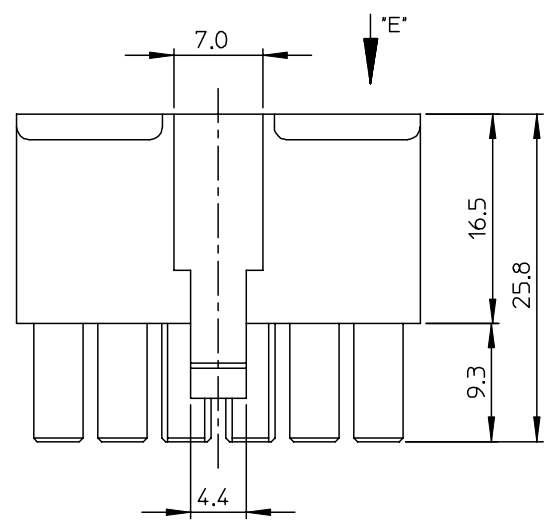
SIMILAR ITEM

PROJECT NO.

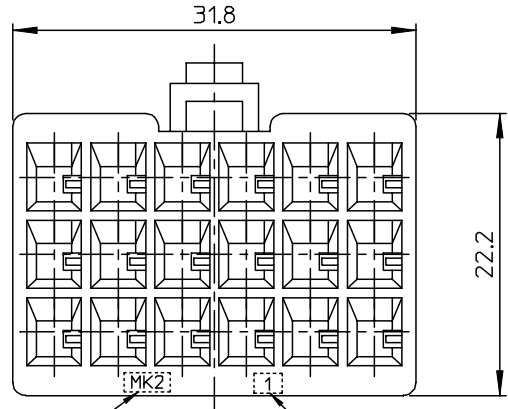
B

DO NOT SCALE DRAWING
DIMENSION IN METRIC

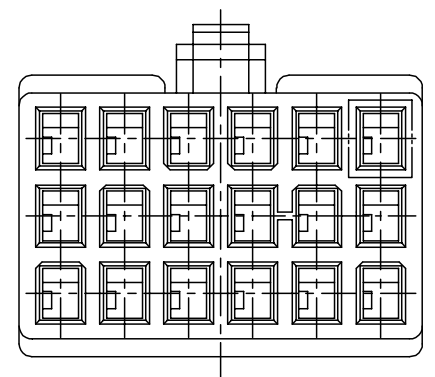
8 7 6 5 4 3 2 1



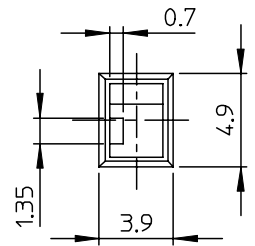
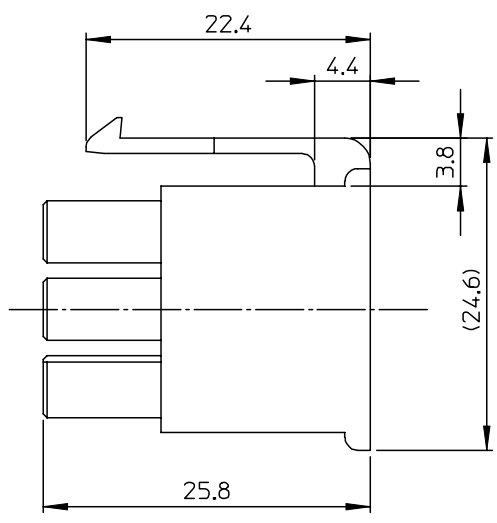
68429-1815



TRADE MARK (MK2) VIEW "E" CAVITY NO.



68429-1825



DETAIL "A"
(S=1.5:1)

NOTES

1. MATERIAL : POLYAMIDE66,UL94V-2

F

E

D

C

B

A

MAT'L NO.	ENG NO.	COLOR	MATED HEADER ASS'Y
684291815	68429-1815	GRAY	49003-1815
684291825	68429-1825	BLACK	49003-1825

REVISED	ECN NO. KOR2004-0089 DRWN: C.B.CHIN 03/12/19 CHK: W.Y.YANG APPR: C.W.LEE	DESCRIPTION	QUALITY SYMBOLS MAJOR \blacktriangledown = 0 CRITICAL ∇ = 0	GENERAL TOLERANCES: (UNLESS SPECIFIED)		SCALE 2:1	DESIGN UNITS <input checked="" type="checkbox"/> mm <input type="checkbox"/> INCH	DIMENSIONS: <input type="checkbox"/> mm <input type="checkbox"/> INCH <input checked="" type="checkbox"/> mm ONLY		SHT	REV
				4 PLACES $\pm 0.$	$\pm -$	DRAWN BY & DATE C.B.CHIN 03/02/14	THIRD ANGLE PROJECTION		TITLE: .110 W/B CONN. HOUSING-18P (OLD VERSION)		REVISE ON CAD ONLY
REV	B			3 PLACES $\pm 0.$	$\pm -$	CHECKED BY & DATE W.Y.YANG 03/02/14		MOLEX INCORPORATED		SHEET NO. 1 OF 1	
				2 PLACES ± 0.30	$\pm -$	APPROVED BY & DATE C.W.LEE 03/02/14		MATERIAL NO. SEE CHART		DRAWING NO. SD-68429-001	SIZE B
				1 PLACE ± 0.25	$\pm -$	CAD FILENAME S684291815BB.MI		THIS DRAWING CONTAINS INFORMATION THAT IS PROPRIETARY TO MOLEX INCORPORATED AND SHOULD NOT BE USED WITHOUT WRITTEN PERMISSION.		KOREA MX-A3	
				ANGULAR: $\pm 1^\circ$		DRAFT WHERE APPLICABLE MUST REMAIN WITHIN DIMENSIONS					