

PLEASE CHECK WWW.MOLEX.COM FOR LATEST PART INFORMATION

Part Number: [0511121110](#)
Status: **Active**
Description: 2.50mm (.098") Pitch Wire-to-Wire Plug Housing, With Optional Panel Mount, 11 Circuits

Documents:

[3D Model](#) [Product Specification PS-51111-001 \(PDF\)](#)
[Drawing \(PDF\)](#) [RoHS Certificate of Compliance \(PDF\)](#)

Agency Certification

CSA LR19980
 UL E29179

General

Product Family Crimp Housings
 Series [51112](#)
 Product Name N/A

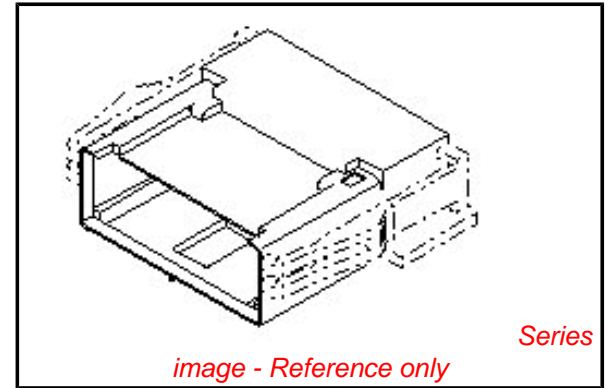
Physical

Circuits (maximum) 11
 Color - Resin Natural
 Flammability 94V-0
 Gender Male
 Glow-Wire Compliant No
 Material - Resin Polyester
 Number of Rows 1
 Packaging Type Bag
 Panel Mount No
 Pitch - Mating Interface (in) 0.098 In
 Pitch - Mating Interface (mm) 2.50 mm
 Stackable No
 Temperature Range - Operating -40°C to +105°C

Material Info

Reference - Drawing Numbers

Product Specification PS-51111-001, RPS-51111-004
 Sales Drawing SD-51112-**10



EU RoHS

ELV and RoHS Compliant
REACH SVHC
 Not Reviewed
Halogen-Free Status

China RoHS



Not Reviewed

Need more information on product environmental compliance?

Email productcompliance@molex.com
 For a multiple part number RoHS Certificate of Compliance, [click here](#)

Please visit the [Contact Us](#) section for any non-product compliance questions.

Search Parts in this Series

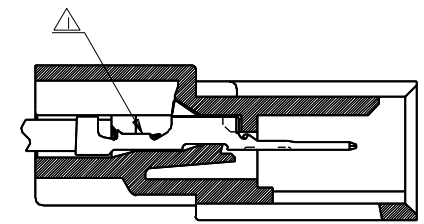
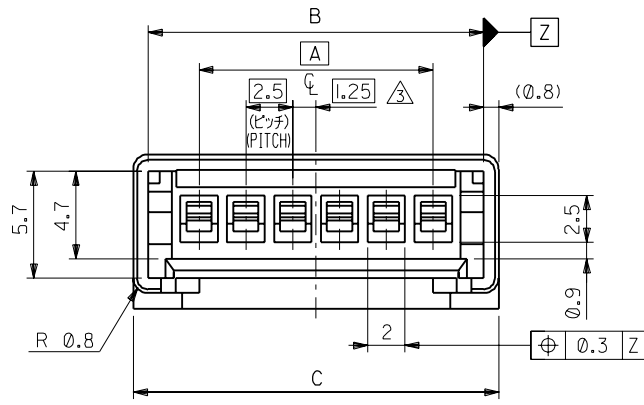
[51112Series](#)

Mates With

[51111](#) , [51111wr](#)

Use With

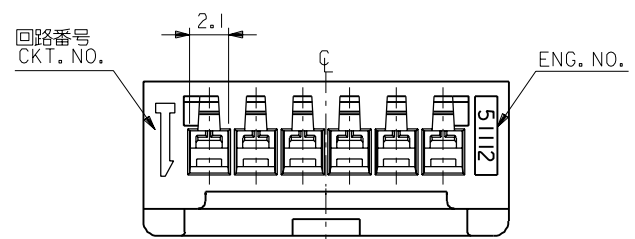
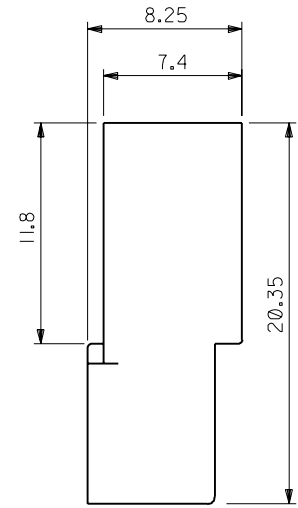
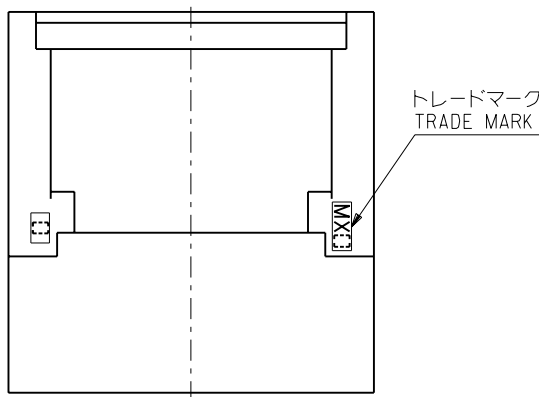
[50398](#)



ターミナル装着状態図
TERMINAL ASSEMBLY DRAWING

注記 NOTES

- △ 適合ターミナル：50398シリーズ
APPLICABLE TERMINAL：50398 SERIES
- 2. 嵌合相手：51111シリーズ
MATE WITH：51111 SERIES
- △ 偶数極の製品に適用。
APPLY EVEN CIRCUIT PRODUCTS.



42	40.4	35	51112-1510	15
39.5	37.9	32.5	-1410	14
37	35.4	30	-1310	13
34.5	32.9	27.5	-1210	12
32	30.4	25	-1110	11
29.5	27.9	22.5	-1010	10
27	25.4	20	-0910	9
24.5	22.9	17.5	-0810	8
22	20.4	15	-0710	7
19.5	17.9	12.5	-0610	6
17	15.4	10	-0510	5
14.5	12.9	7.5	-0410	4
12	10.4	5	-0310	3
9.5	7.9	2.5	51112-0210	2
C	B	A	ENG. NO.	極数 NO. OF CKT.

				材料 MATERIAL PBTP, UL94V-0 (白色 WHITE)		molex MOLEX-JAPAN CO.,LTD. 日本モレックス株式会社	
				仕上げ FINISH —		REVISE ONLY ON CAD SYSTEM	
				適用電線範囲 WIRE RANGE —		TITLE 名称	
				被覆外径 INS. RANGE —		2.5 WIRE TO WIRE CONN. PLUG HOUSING	
角度 ANGLE ±3°				DRAWN BY '93/9/6 K.TOJO		CHK'D BY '94/6/22 S.KUNISHI	
30以上 OVER +0.3		A 変更 REVISD (J40498)		K.T S.K '94/6/22			
10以上 30未満 UNDER +0.25		0 新規作成 (J30895)		K.T H.H '93/9/6			
10未満 UNDER +0.2		記号 LTR 変更内容 REVISION RECORD		DR. CHK. 日付 DATE		APP'D BY '93/6/22 M.FUKUSHIMA	
一般公差 GENERAL TOLERANCES				尺度 SCALE 4:1		DWG. NO. SD-51112-***10	
						REV A	

DIMENSIONS IN METRIC DO NOT SCALE DRAWING

51112-22