

PLEASE CHECK WWW.MOLEX.COM FOR LATEST PART INFORMATION

Part Number: [0879370502](#)
Status: **Active**
Overview: [kk](#)
Description: 2.54mm (.100") Pitch KK® Header, Single Row Dual Body, Through Hole, Vertical, 5 Circuits, 2.50µm (100µ") Tin (Sn) Plating, 11.00mm (.433") Stacking Height, Tray Packaging, Lead-free

Documents:

[3D Model](#) [Product Specification PS-87920-019 \(PDF\)](#)
[Drawing \(PDF\)](#) [RoHS Certificate of Compliance \(PDF\)](#)

Agency Certification

UL E29179

General

Product Family PCB Headers
 Series [87937](#)
 Application Board-to-Board, Wire-to-Board
 Overview [kk](#)
 Product Name Dual Body, KK®

Physical

Breakaway Yes
 Circuits (Loaded) 5
 Circuits (maximum) 5
 Color - Resin Black
 First Mate / Last Break No
 Flammability 94V-0
 Glow-Wire Compliant No
 Guide to Mating Part No
 Keying to Mating Part None
 Lock to Mating Part None
 Mated Height (in) 0.149 In
 Mated Height (mm) 3.78 mm
 Material - Metal Copper Alloy
 Material - Plating Mating Tin
 Material - Plating Termination Nickel
 Material - Resin Nylon
 Number of Rows 1
 Orientation Vertical
 PC Tail Length (in) 0.148 In
 PC Tail Length (mm) 3.76 mm
 PCB Locator No
 PCB Retention None
 PCB Thickness Recommended (in) 0.062 In
 PCB Thickness Recommended (mm) 1.60 mm
 Packaging Type Tray
 Pitch - Mating Interface (in) 0.100 In
 Pitch - Mating Interface (mm) 2.54 mm
 Pitch - Term. Interface (in) 0.100 In
 Pitch - Term. Interface (mm) 2.54 mm
 Plating min: Mating (µin) 100
 Plating min: Mating (µm) 2.50
 Plating min: Termination (µin) 50
 Plating min: Termination (µm) 1.25
 Polarized to Mating Part No

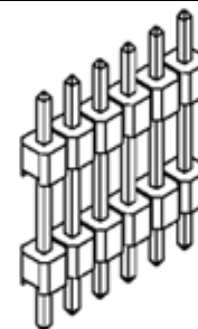


image - Reference only

Series

EU RoHS

ELV and RoHS Compliant
REACH SVHC
 Not Reviewed
Halogen-Free Status
Not Reviewed

China RoHS



Need more information on product environmental compliance?

Email productcompliance@molex.com
 For a multiple part number RoHS Certificate of Compliance, [click here](#)

Please visit the [Contact Us](#) section for any non-product compliance questions.

Search Parts in this Series

[87937Series](#)

Mates With

KK® PCB Receptacles [4455](#). SL™ IDT Housings [70430](#) , [7720](#), [70400](#). C-Grid® PCB Receptacles [90147](#), [90148](#)

| | |
|--------------------------------|-----------------|
| Polarized to PCB | No |
| Shrouded | No |
| Stackable | No |
| Surface Mount Compatible (SMC) | Yes |
| Temperature Range - Operating | -55°C to +105°C |
| Termination Interface: Style | Through Hole |

Electrical

| | |
|-------------------------------|------|
| Current - Maximum per Contact | 3A |
| Voltage - Maximum | 250V |

Solder Process Data

| | |
|--|------------------------|
| Duration at Max. Process Temperature (seconds) | 14 |
| Lead-free Process Capability | Wave Capable (TH only) |
| Max. Cycles at Max. Process Temperature | 1 |
| Process Temperature max. C | 265 |

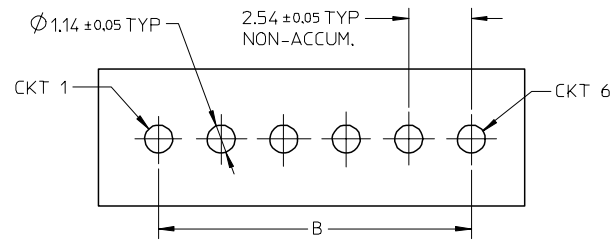
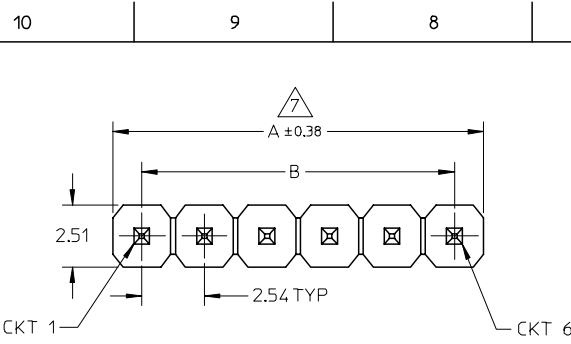
Material Info

Reference - Drawing Numbers

| | |
|-------------------------|--------------|
| Packaging Specification | PK-89990-489 |
| Product Specification | PS-87920-019 |
| Sales Drawing | SD-87937-002 |

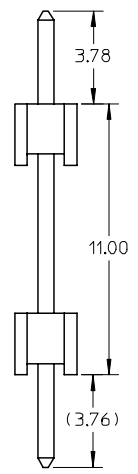
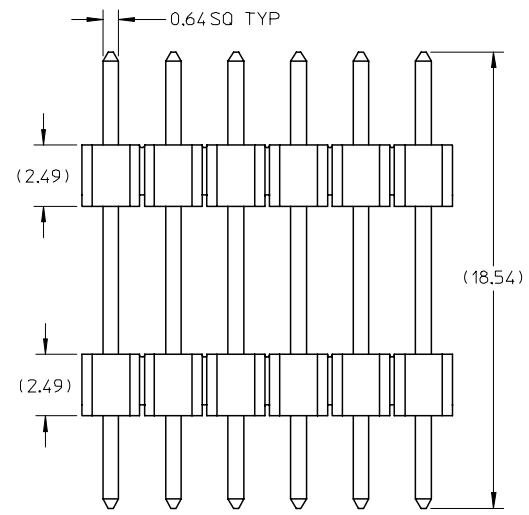
This document was generated on 05/26/2010

PLEASE CHECK WWW.MOLEX.COM FOR LATEST PART INFORMATION

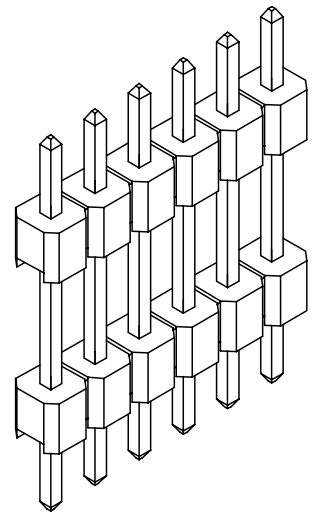


RECOMMENDED P.C.B HOLE LAYOUT

| PART NO IN TRAY | CKT SIZE | DIMENSION | |
|-----------------|----------|-----------|-------|
| | | A | B |
| 87937-0106 | 1 | 2.54 | ----- |
| 87937-0406 | 4 | 10.16 | 7.62 |
| 87937-0502 | 5 | 12.70 | 10.16 |
| 87937-0802 | 8 | 20.32 | 17.78 |
| 87937-1206 | 12 | 30.48 | 27.94 |



- NOTES:
- MATERIAL:
HOUSING: 30% G.F. POLYESTER, UL94V-0,
COLOR: BLACK
TERMINAL: COPPER ALLOY
 - PLATING TYPE:
(6) : 100 MICRO INCHES MIN. TIN IN SELECTED AREA OVER
50 MICRO INCHES MIN. NICKEL OVERALL.
 - PIN PUSHOUT FORCE: 1KG MIN IN EITHER DIRECTION
 - PACKAGING SPECIFICATION: PK-89990-489
 - THE ABOVE 6 CKT IS FOR ILLUSTRATION PURPOSE ONLY.
 - PART TO BE PACK IN TRAY.
 - IRREGULAR CIRCUIT CUTOFF WITHIN BREAKAWAY SECTION IS PERMISSIBLE. CUTTING OR CHIPPING OF THE MAIN BODY IS NOT ACCEPTABLE.



| EC NO: S2007-0132 DRWN:SKLIM01 2006/08/17 CHKD:CLAM 2006/08/18 APPR:PATEY 2006/08/22 | QUALITY SYMBOLS | GENERAL TOLERANCES (UNLESS SPECIFIED) | DIMENSION STYLE | SCALE | DESIGN UNITS | THIRD ANGLE PROJECTION | | | | | | | | | | | | | | | | | | | | | | | |
|---|--|--|---|-------|--------------|--|----------|-------|----------|-------|------------|---|------------|-------|---------|------------|--------------------|-------------|------|--------|------------|--|---|--------------|--------------|-----------|-----------|--------------|--------|
| | $\nabla=0$ $\nabla C=0$ | <table border="1"> <tr> <th></th> <th>mm</th> <th>INCH</th> </tr> <tr> <td>4 PLACES</td> <td>± ---</td> <td>± ---</td> </tr> <tr> <td>3 PLACES</td> <td>± ---</td> <td>± ---</td> </tr> <tr> <td>2 PLACES</td> <td>± 0.20</td> <td>± ---</td> </tr> <tr> <td>1 PLACE</td> <td>± ---</td> <td>± ---</td> </tr> </table> | | mm | INCH | 4 PLACES | ± --- | ± --- | 3 PLACES | ± --- | ± --- | 2 PLACES | ± 0.20 | ± --- | 1 PLACE | ± --- | ± --- | MM ONLY | NTS | METRIC | | | | | | | | | |
| | | mm | INCH | | | | | | | | | | | | | | | | | | | | | | | | | | |
| | 4 PLACES | ± --- | ± --- | | | | | | | | | | | | | | | | | | | | | | | | | | |
| 3 PLACES | ± --- | ± --- | | | | | | | | | | | | | | | | | | | | | | | | | | | |
| 2 PLACES | ± 0.20 | ± --- | | | | | | | | | | | | | | | | | | | | | | | | | | | |
| 1 PLACE | ± --- | ± --- | | | | | | | | | | | | | | | | | | | | | | | | | | | |
| DESCRIPTION | <table border="1"> <tr> <th>REV</th> <th>DESCRIPTION</th> </tr> <tr> <td>B</td> <td></td> </tr> </table> | REV | DESCRIPTION | B | | <table border="1"> <tr> <th>DRAWN BY</th> <th>DATE</th> <th>TITLE</th> </tr> <tr> <td>KCHO</td> <td>2005/05/25</td> <td rowspan="2">CUSTOM HEADER C-GRID SINGLE ROW HEADER DUAL WAFER TROUGH HOLE</td> </tr> <tr> <th>CHECKED BY</th> <th>DATE</th> </tr> <tr> <td>BOKOK</td> <td>2005/06/13</td> <td rowspan="2">MOLEX INCORPORATED</td> </tr> <tr> <th>APPROVED BY</th> <th>DATE</th> </tr> <tr> <td>PTLIM</td> <td>2005/06/13</td> <td></td> </tr> </table> | DRAWN BY | DATE | TITLE | KCHO | 2005/05/25 | CUSTOM HEADER C-GRID SINGLE ROW HEADER DUAL WAFER TROUGH HOLE | CHECKED BY | DATE | BOKOK | 2005/06/13 | MOLEX INCORPORATED | APPROVED BY | DATE | PTLIM | 2005/06/13 | | <table border="1"> <tr> <th>MATERIAL NO.</th> <th>DOCUMENT NO.</th> <th>SHEET NO.</th> </tr> <tr> <td>SEE TABLE</td> <td>SD-87937-002</td> <td>1 OF 1</td> </tr> </table> | MATERIAL NO. | DOCUMENT NO. | SHEET NO. | SEE TABLE | SD-87937-002 | 1 OF 1 |
| REV | DESCRIPTION | | | | | | | | | | | | | | | | | | | | | | | | | | | | |
| B | | | | | | | | | | | | | | | | | | | | | | | | | | | | | |
| DRAWN BY | DATE | TITLE | | | | | | | | | | | | | | | | | | | | | | | | | | | |
| KCHO | 2005/05/25 | CUSTOM HEADER C-GRID SINGLE ROW HEADER DUAL WAFER TROUGH HOLE | | | | | | | | | | | | | | | | | | | | | | | | | | | |
| CHECKED BY | DATE | | | | | | | | | | | | | | | | | | | | | | | | | | | | |
| BOKOK | 2005/06/13 | MOLEX INCORPORATED | | | | | | | | | | | | | | | | | | | | | | | | | | | |
| APPROVED BY | DATE | | | | | | | | | | | | | | | | | | | | | | | | | | | | |
| PTLIM | 2005/06/13 | | | | | | | | | | | | | | | | | | | | | | | | | | | | |
| MATERIAL NO. | DOCUMENT NO. | SHEET NO. | | | | | | | | | | | | | | | | | | | | | | | | | | | |
| SEE TABLE | SD-87937-002 | 1 OF 1 | | | | | | | | | | | | | | | | | | | | | | | | | | | |
| | DRAFT WHERE APPLICABLE MUST REMAIN WITHIN DIMENSIONS | SIZE A3 | THIS DRAWING CONTAINS INFORMATION THAT IS PROPRIETARY TO MOLEX INCORPORATED AND SHOULD NOT BE USED WITHOUT WRITTEN PERMISSION | | | | | | | | | | | | | | | | | | | | | | | | | | |