

**PLEASE CHECK WWW.MOLEX.COM FOR LATEST PART INFORMATION**

**Part Number:** [0334710202](#)  
**Status:** **Active**  
**Overview:** [mx150 sealed connector system](#)  
**Description:** 3.50mm (.138") Pitch MX150™ Sealed Female Connector, Single Row, 2 Circuits, Polarization B, without Connector Position Assurance, Light Gray

**Documents:**

[Drawing \(PDF\)](#) [RoHS Certificate of Compliance \(PDF\)](#)

**General**

Product Family	Crimp Housings
Series	<a href="#">33471</a>
Comments	No Connector Position Assurance (CPA)
More Detailed Tech Information	<a href="http://ewcap.uscarteams.org">http://ewcap.uscarteams.org</a>
Overview	<a href="#">mx150 sealed connector system</a>
Product Name	MX150™

**Physical**

Circuits (maximum)	2
Circuits Detail	2
Color - Resin	Gray (Light), Natural
Gender	Female
Glow-Wire Compliant	No
Keying to Mating Part	Yes
Lock to Mating Part	Yes
Material - Resin	Modified Polystyrene Alloy
Number of Rows	1
Packaging Type	Bag
Panel Mount	No
Pitch - Mating Interface (in)	0.138 In
Pitch - Mating Interface (mm)	3.50 mm
Polarized to Mating Part	Yes
Stackable	No
Temperature Range - Operating	-40°C to +125°C

**Electrical**

Current - Maximum per Contact	22A
-------------------------------	-----

**Material Info**

**Reference - Drawing Numbers**

Application Specification	AS-33472-100
Packaging Specification	PK-31300-635
Sales Drawing	150-S-002-1-Z05, SD-33471-021



**EU RoHS** **China RoHS**

**Compliance Status**

**Not Reviewed**

**REACH SVHC**

**Contains SVHC: No**

**Halogen-Free**

**Status**

**Halogen-Free**

**Need more information on product environmental compliance?**

Email [productcompliance@molex.com](mailto:productcompliance@molex.com)  
 For a multiple part number RoHS Certificate of Compliance, [click here](#)

Please visit the [Contact Us](#) section for any non-product compliance questions.

**Search Parts in this Series**

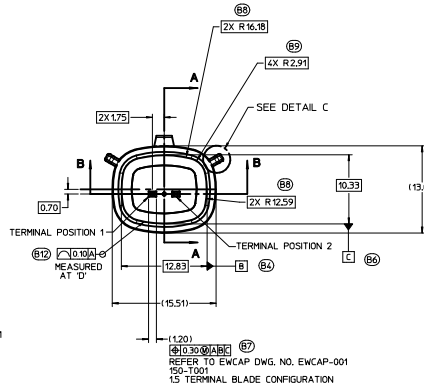
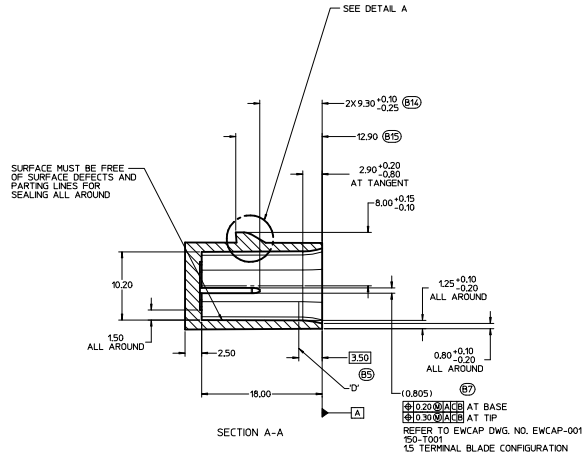
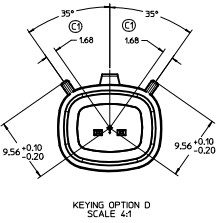
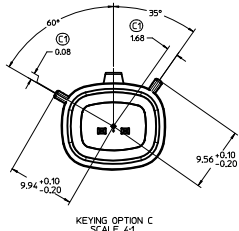
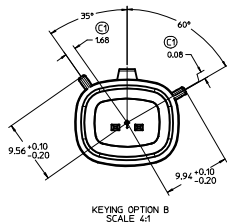
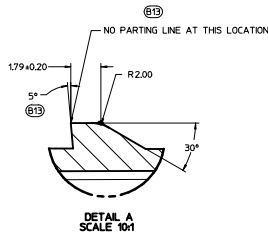
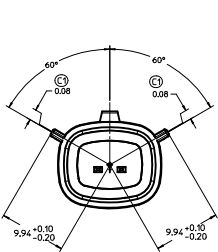
[33471Series](#)

**Mates With**

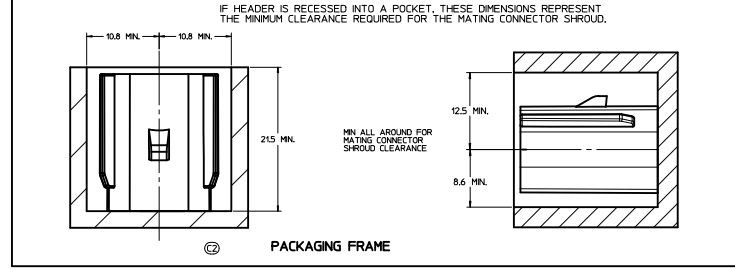
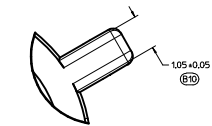
[33481](#) Male Single Row Sealed Connector

**Use With**

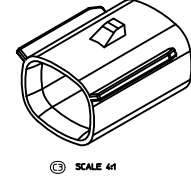
[33012](#) MX150™ Female Terminal



CONSTRUCTION BELOW THIS SURFACE IS NOT CONTROLLED BY EWCAP. NO PLASTIC FEATURES MAY EXTEND ABOVE THIS SURFACE



NOTICE  
THIS DRAWING OR PORTIONS OF IT ARE CONTROLLED BY THE ELECTRICAL WIRING COMPONENTS APPLICATION PARTNERSHIP (EWCAP), A SUBGROUP OF THE UNITED STATES CONSORTIUM FOR AUTOMOTIVE RESEARCH (USCAR). USCAR IS A PARTNERSHIP BETWEEN DAIMLERCHRYSLER CORPORATION, FORD MOTOR COMPANY, AND GENERAL MOTORS CORPORATION. ANY CHANGE TO A EWCAP CONTROLLED PORTION OF THIS DRAWING, INCLUDING A RECORD CHANGE, MUST BE APPROVED IN WRITING BY THE RESPONSIBLE EWCAP MEMBER FROM EACH USCAR COMPANY. EACH USCAR MEMBER AUTHORIZED TO SIGN FOR HIS OR HER COMPANY IS RESPONSIBLE FOR OBTAINING ALL NECESSARY APPROVALS WITHIN THAT COMPANY PRIOR TO SIGNING FOR APPROVAL OF THE CHANGE. EWCAP EXPRESSLY PROHIBITS ANY PARTY FROM CHANGING EITHER ANY EWCAP CONTROLLED PORTION OF THIS DRAWING OR ANY ASSOCIATED TOOLING BEFORE RECEIVING AN APPROVAL SIGNED BY AN AUTHORIZED REPRESENTATIVE FROM EACH EWCAP PARTNER. REFERENCE TO THE SIGNED APPROVAL FORM MUST BE ENTERED IN THIS DRAWING'S CONTROL COLUMN.



DATE	BY	DESCRIPTION	DATE	BY	DESCRIPTION
01-15-09	DG	SV			
01-10-08	DG	SV			
11-13-07	JH	MV			
11-13-07	JH	MV			

LET	REVISION RECORD	DATE	DWN	CHK

SCALE	DRAWN BY	CHECKED BY	DATE
4 - 1	JHINDS	REYVANSLAMBROUCK	11-13-07

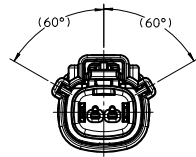
  

TITLE	DRAWING NUMBER	REV	REVISED LEVEL
DIRECT CONNECT INTERFACE 2 WAY (1 X 2) 15MM SEALED MALE	150-S-002-1-Z05	E	C

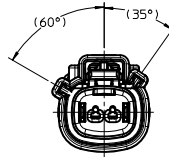
EWCAP P/N	OPTION	MATING CONNECTOR COLOR
150-S-002-1-005	D	GREEN
150-S-002-1-005	C	BROWN
150-S-002-1-805	B	GREY
150-S-002-1-A05	A	BLACK



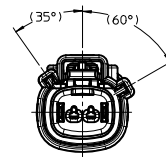
ASSEMBLY PART NUMBER	KEYING OPTION	COLOR	CAVITY STATUS		CPA
			X-PLUGGED	1	
33471-0201	A	BLACK			
33471-0202	B	LIGHT GRAY			
33471-0203	C	DARK GRAY			
33471-0204	D	STONE GRAY			
33471-0206	A	BLACK			YES
33471-0207	B	LIGHT GRAY			YES
33471-0208	C	DARK GRAY			YES
33471-0209	D	STONE GRAY			YES
33471-0210	A	BLACK	X		
33471-0211	B	LIGHT GRAY	X		
33471-0212	C	DARK GRAY	X		
33471-0213	D	STONE GRAY	X		
33471-0214	A	BLACK	X		YES
33471-0215	B	LIGHT GRAY	X		YES
33471-0216	C	DARK GRAY	X		YES
33471-0217	D	STONE GRAY	X		YES



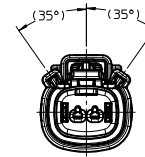
KEYING OPTION A



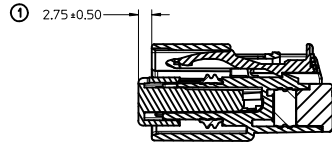
KEYING OPTION B



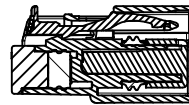
KEYING OPTION C



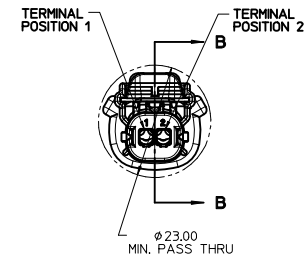
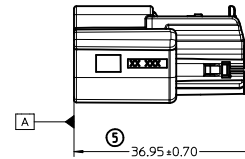
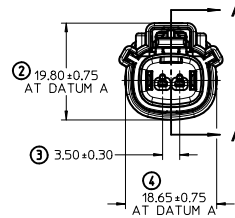
KEYING OPTION D



SECTION B-B  
RECEPTACLE INSERT SHOWN  
IN PRE-LOCK POSITION

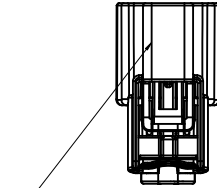
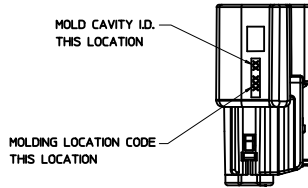


SECTION A-A  
RECEPTACLE INSERT SHOWN  
IN FINAL-LOCK POSITION

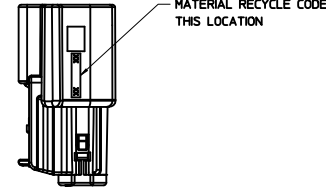


NOTES: UNLESS OTHERWISE SPECIFIED

- DESIGNED TO MATE WITH INTERFACE SPECIFIED IN DRAWING 150-S-002-1-205 REV. C.
- ASSEMBLY SHIPPED WITH RECEPTACLE INSERT IN PRE-LOCK POSITION. UPON FULL TERMINAL ASSEMBLY, EACH RECEPTACLE INSERT MUST BE SNAPPED INTO ITS FINAL-LOCK POSITION.
- FOR RECEPTACLE TERMINALS TO BE USED WITH THIS ASSEMBLY, SEE DRAWING SD-33012-002 REV. B.
- SYSTEM TO BE USED WITH WIRE WITHIN DIAMETER RANGE OF 1.70mm TO 2.34mm.
- OPTIONAL CPA SHOWN IN ALL VIEWS. SEE TABLE FOR SPECIFIC ASSEMBLY OPTION AND NUMBER. CPA MUST BE INSERTED TO THE PRE-LOCK POSITION WHEN SEATED CORRECTLY, THE CPA DOES NOT MOVE FREELY. ENGAGEMENT FORCE TO MOVE CPA FROM PRE-LOCK TO FINAL-LOCK POSITION WHEN UNMATED: 40N MIN. DISENGAGEMENT FORCE TO MOVE CPA FROM FINAL-LOCK TO PRE-LOCK POSITION: 3N MIN.
- MATERIAL: SPS/NYLON BLEND, 20% GLASS FILLED.
- DATE CODE: FIRST TWO DIGITS IS CALENDAR YEAR, THIRD THRU FIFTH DIGIT IS DAY NUMBER OF THE CALENDAR YEAR (FEB. 3RD, 2003 = 0341)
- CHENGDU ASSEMBLIES SHALL CONFORM TO PACKAGING SPECIFICATION PK-31300-635.
- SHALL CONFORM TO PRODUCT SPECIFICATION PS-33471-000
- PACKAGING: IN THE EVENT THAT INSERT IS FOUND IN THE SEATED (FINAL-LOCK) POSITION, REFER TO MOLEX SPECIFICATION PS-34646-001 AVAILABLE AT WWW.MOLEX.COM



LASER MARKING APPLIED TO THIS SURFACE TO INCLUDE: MOLEX P/N DATE CODE. SEE NOTE 7



<b>ENTER DESCRIPTION</b> EC NO: UAU2010-1242 DRAWN BY: SVERZYL 2010/01/04 CHKD BY: WANSI.AMBROU 2010/01/04 APPR: VIOSHY 2010/01/05	<b>QUALITY SYMBOLS</b> 	<b>GENERAL TOLERANCES (UNLESS SPECIFIED)</b>		<b>DIMENSION STYLE</b> MM ONLY	<b>SCALE</b> 2:1	<b>DESIGN UNITS</b> METRIC	THIRD ANGLE PROJECTION
		4 PLACES ± 0.10 ± 0.15 3 PLACES ± 0.15 ± 0.20 2 PLACES ± 0.20 ± 0.25 1 PLACE ± 0.25 ± 0.30	mm INCH ± 0.10 ± 0.004 ± 0.15 ± 0.006 ± 0.20 ± 0.008 ± 0.25 ± 0.010	DRAWN BY: SVERZYL DATE: 06/17/08	TITLE: MX150 STANDARD CONNECTOR RECEPTACLE SINGLE ROW, SEALED, 2 WAY		
		ANGULAR ± 0.2°	DRAFT WHERE APPLICABLE MUST REMAIN WITHIN DIMENSIONS	CHECKED BY: DGRIFITHS DATE: 06/18/08	APPROVED BY: SMARCEAU DATE: 06/19/08		
		MATERIAL NO. -		DOCUMENT NO. SD-33471-021	SHEET NO. 1 OF 1		