

PLEASE CHECK WWW.MOLEX.COM FOR LATEST PART INFORMATION

Part Number: [0008580136](#)
Status: **Active**
Overview: [kk](#)
Description: KK® Crimp Terminal 8818, 18-22 AWG, Bag, Phosphor Bronze Selective Gold (Au)

Documents:

[Drawing \(PDF\)](#) [RoHS Certificate of Compliance \(PDF\)](#)
[Product Specification PS-08-50 \(PDF\)](#)

General

Product Family	Crimp Terminals
Series	8818
Crimp Quality Equipment	Yes
Overview	kk
Product Name	KK®

Physical

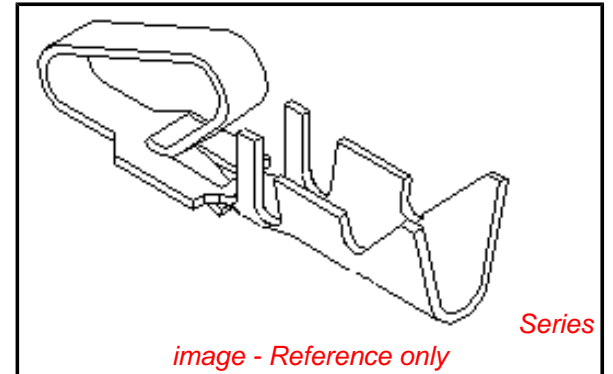
Gender	Female
Material - Metal	Phosphor Bronze
Material - Plating Mating	Gold
Material - Plating Termination	Gold
Packaging Type	Bag
Plating min: Mating (µin)	15
Plating min: Mating (µm)	0.375
Plating min: Termination (µin)	2
Plating min: Termination (µm)	0.05
Termination Interface: Style	Crimp or Compression
Wire Insulation Diameter	2.41mm (.095") max.
Wire Size AWG	18, 20, 22
Wire Size mm²	N/A

Material Info

Old Part Number	8818-A(550)L
-----------------	--------------

Reference - Drawing Numbers

Packaging Specification	PK-2759-001
Product Specification	PS-08-50
Sales Drawing	SD-8818



EU RoHS
ELV and RoHS
Compliant
REACH SVHC
 Not Reviewed
Halogen-Free
Status
Not Reviewed

China RoHS



Need more information on product environmental compliance?

Email productcompliance@molex.com
 For a multiple part number RoHS Certificate of Compliance, [click here](#)

Please visit the [Contact Us](#) section for any non-product compliance questions.

Search Parts in this Series

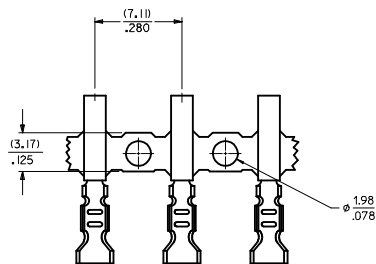
[8818Series](#)

Application Tooling | [FAQ](#)

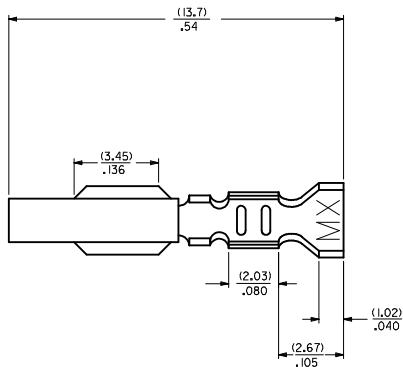
Tooling specifications and manuals are found by selecting the products below. Crimp Height Specifications are then contained in the Application Tooling Specification document.

Global

Description	Product #
Hand Crimper	0638117500



CHAIN FORM
SCALE 5:1



LEGEND

88 18 ** *-(*)*

MATERIAL
(.27)/.0106 THK.
BLANK= BRASS
A= PHOS BRONZE

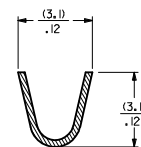
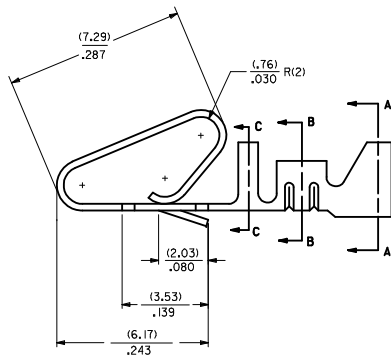
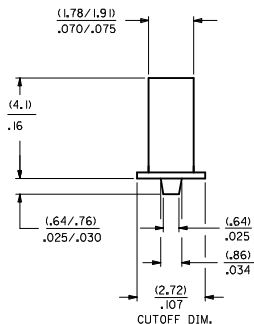
WINDING SPEC
BLANK= PER ES-339-B
L=LOOSE

PLATING
SEE NOTE 2

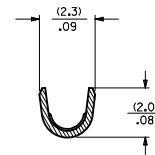
OPTION CODE
BLANK=AS SHOWN

EDP NO.	ENGINEERING NO.
08-56-0187	88 18-(50)I
08-56-0188	88 18-(50)IL
	88 18-(555)
	88 18-(555)IL
08-50-0008	88 18-(P909)
08-50-0023	88 18-(P909)IL
40-01-1181	88 18-(999)
40-01-1182	88 18-A(999)
08-50-0705	88 18-A(102)
08-50-0706	88 18-A(102)IL
08-65-0128	88 18-A(555)
08-65-0129	88 18-A(555)IL
08-52-0131	88 18-A(P909)
08-52-0132	88 18-A(P909)IL
08-58-0135	88 18-A(550)
08-58-0136	88 18-A(550)IL

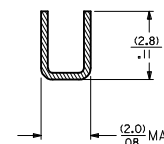
- NOTES:
- MATERIAL: SEE LEGEND
 - FINISH:
 - (P909) OVERALL HOT TIN DIP: (0.00254)/.000100 MIN.
 - (550) SELECT GOLD: (0.000381)/.000015 MIN.
 - OVERALL GOLD FLASH: (0.000051)/.000002 MIN.
 - OVERALL NICKEL UNDERPLATE: (0.000761)/.000030 MIN.
 - (555) SELECT GOLD: (0.000381)/.000015 MIN.
 - OVERALL NICKEL UNDERPLATE: (0.000761)/.000030 MIN.
 - PRODUCT SPECIFICATION: PS-08-50
 - PACKAGING SPECIFICATION: NONE
 - CRIMP ACCEPTS 18-22 GA. WIRE WITH (2.79)/.110 MAX. INSULATION DIA.
 - DIMENSIONS GIVEN ACROSS CENTERLINES ARE SYMMETRICAL ABOUT THOSE CENTERLINES WITHIN HALF THE TOTAL TOLERANCE.
 - TERMINAL FOR USE IN 41695 AND 6345 HOUSINGS.
 - THIS PART CONFORMS TO CLASS B REQUIREMENTS OF COSMETIC SPECIFICATION PS-45499-002.



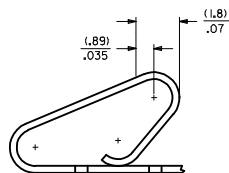
SECTION A-A



SECTION B-B



SECTION C-C



POST-PLATED SELECT GOLD LOCATION

ADD CHAIN VIEW IEC NO: UCP2009-2843 DRAWN BY: DRWNK/PPER 2009/05/27 CHKD:SSOUSEK 2009/05/28 APPR:FSM/TH 2009/05/28	QUALITY SYMBOLS ▽=0 ▽=0	GENERAL TOLERANCES (UNLESS SPECIFIED)		DIMENSION STYLE MM/IN	SCALE ---	DESIGN UNITS INCH	THIRD ANGLE PROJECTION		
		4 PLACES ± mm ± INCH 3 PLACES ± --- ± --- 2 PLACES ± 0.25 ± .014 1 PLACE ± 0.36 ± ---	DRAWN BY: JJS DATE: 02/02/193	CHECKED BY: PATEL DATE: 02/02/193	TITLE CRIMP STYLE KK TYPE, .156 CENTERS W/ANTIFISHOOKING FEATURE				
		ANGULAR ±1/2°	APPROVED BY: ENZ DATE: 02/02/193	MOLEX INCORPORATED					
		DRAFT WHERE APPLICABLE MUST REMAIN WITHIN DIMENSIONS	MATERIAL NO: SEE CHART SIZE: D	DOCUMENT NO: SD-8818	SHEET NO: 1 OF 1				