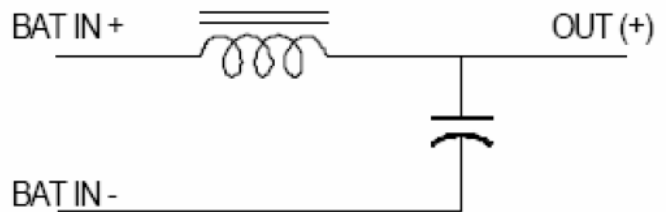
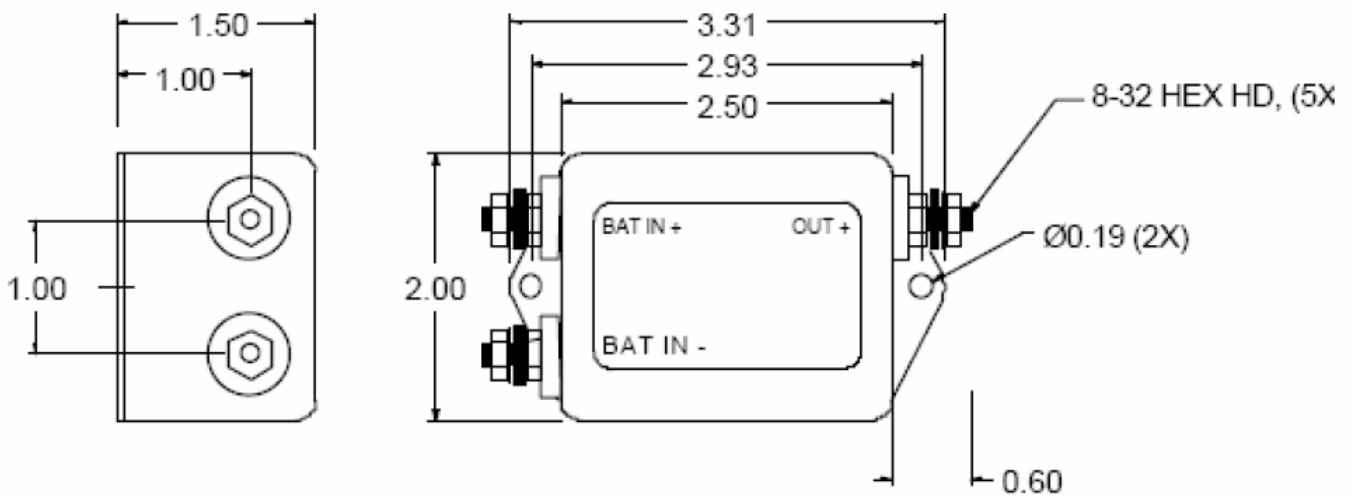
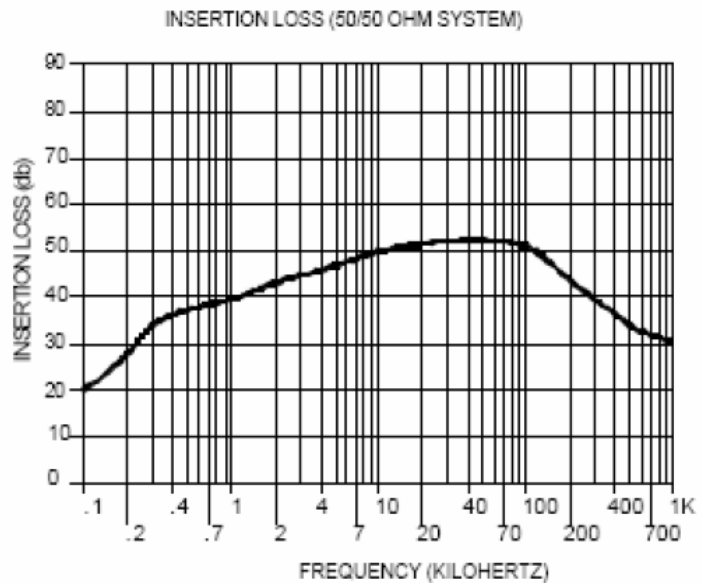


The LL-1443-20 filter has been developed for use with automotive electrical systems .  
 Automotive electrical systems are very noisy and electronic systems installed in vehicles need to be protected against the electrical interference and Transients generated by the power system.  
 This filter is designed to provide this protection.



Operating voltage (max) = 50 Vdc  
 Operating Current (max) = 20 Amperes  
 Temperature range (storage) = -40 to 105 C  
 Temperature range (operating) = -40 TO 65 C  
 Design Specifications:  
 Humidity: Mil-Std-810, 507.3, cycle 5  
 Temperature: Mil-Std-810, 507.3-1  
 Vibration: Mil-Std-810,  
 Shock: Mil-Std-810, Proc. (5), Crash hazard

Order p/n: LL-1443-20



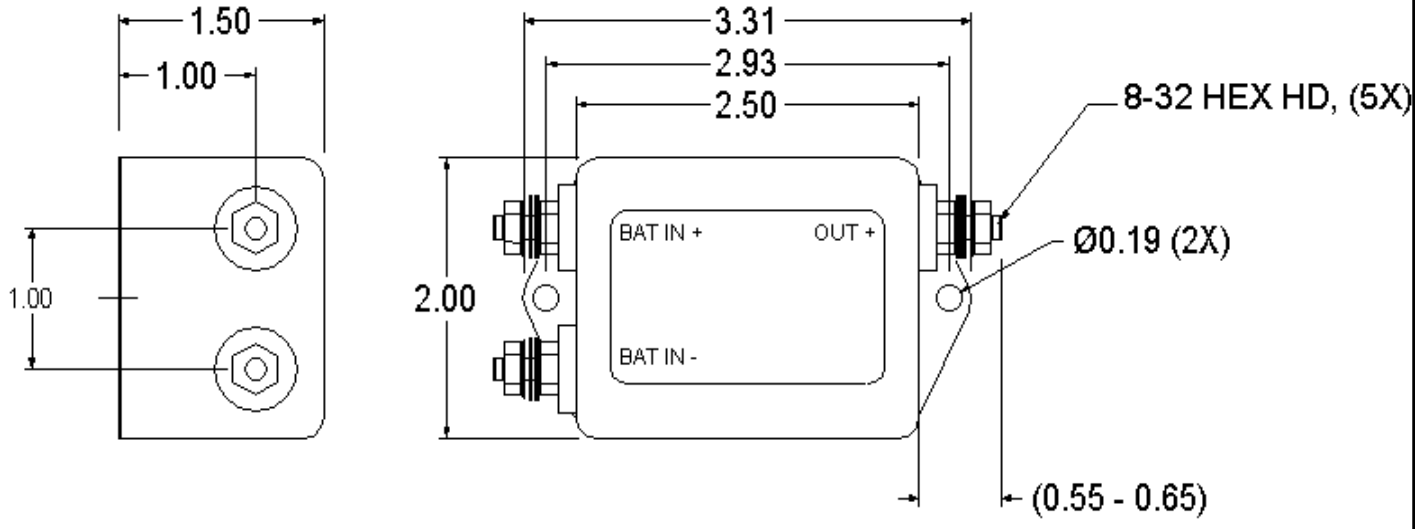
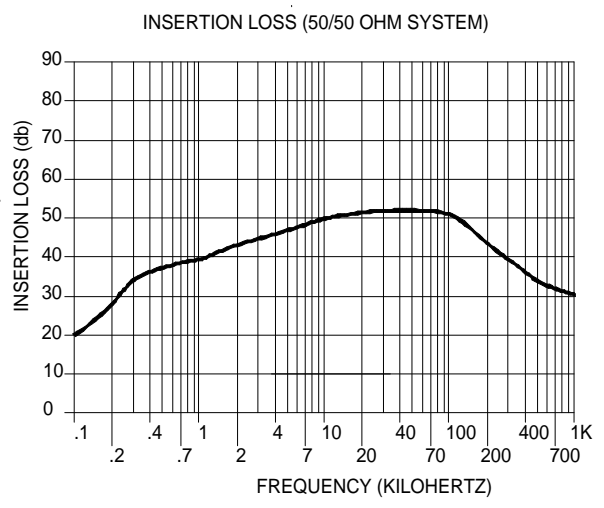
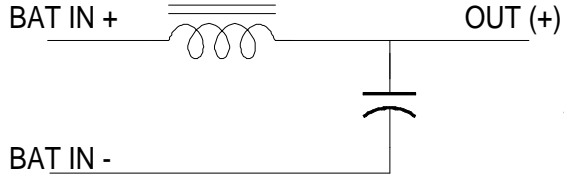


# LL-1443-20

The LL-1443-20 filter has been developed for use with automotive electrical systems. Automotive electrical systems are very noisy and electronic systems installed in vehicles need to be protected against the electrical interference and transients generated by the power system. This filter is designed to provide this protection.

Operating voltage (max) = 50 Vdc  
 Operating Current (max) = 20 Amperes  
 Temperature range (storage) = -40 to 105 C  
 Temperature range (operating) = -40 TO 65 C

Design Specifications:  
 Humidity: Mil-Std-810, 507.3, cycle 5  
 Temperature: Mil-Std-810, 507.3-1  
 Vibration: Mil-Std-810,  
 Shock: Mil-Std-810, Proc. (5), Crash hazard





# LL-1443-20B

The LL-1443-20B filter has been developed for use with automotive electrical systems. Automotive electrical systems are very noisy and electronic systems installed in vehicles need to be protected against the electrical interference and transients generated by the power system. This filter is designed to provide this protection. The difference between this (-20B) filter and the (-20) is that this (-20B) has a (OUT -) terminal.

Operating voltage (max) = 50 Vdc  
 Operating Current (max) = 20 Amperes  
 Temperature range (storage) = -40 to 105 C  
 Temperature range (operating) = -40 TO 65 C  
 Design Specifications:

- Humidity: Mil-Std-810, 507.3, cycle 5
- Temperature: Mil-Std-810, 507.3-1
- Vibration: Mil-Std-810,
- Shock: Mil-Std-810, Proc. (5), Crash hazard

