

POWER LINE CHOKE

(DRUM CORE STYLE)

Electrical Specifications at 25°C

Parameter	Min.	Typ.	Max.	Units
Inductance	1280	1600	1920	μH
I_{MAX}^1		10.5		A
DCR		134		mΩ
Lead Diameter		.057 (1.44)		inches (mm)

Applications

Power Amplifiers

Filters Power Supplies

SCR and Triac Controls

Speaker Crossover Networks

RFI Suppression

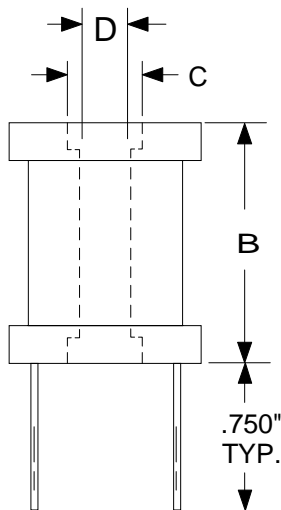
Operating temperature Range
-45°C to +85°C

Test Conditions:

Inductance tested at 100 mV_{RMS} and 1 kHz

1. Current for 10% drop in Inductance

PHYSICAL DIMENSIONS All dimensions in inches

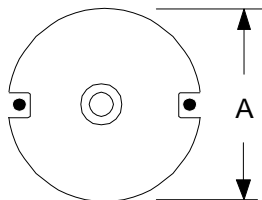


Dim.	inches
A	2.200
B	1.380
C	0.380
D	0.290

High Saturation

Pre-Tinned Leads

Center hole for mechanical mounting



Leads are .057 (#15 AWG)

Leads tinned to within 1/8" of body.

RHOMBUS P/N: **L-12637**

CUST P/N:

NAME:

DATE: **1/21/99**

SHEET: