

# BRIGHT LED ELECTRONICS CORP.

## LED DISPLAY SPECIFICATION

●COMMODITY : 32.0\*32.0mm Light Bar

●DEVICE NUMBER : BA-16G11UW

VERSION : 1.0 / 2000.08.01

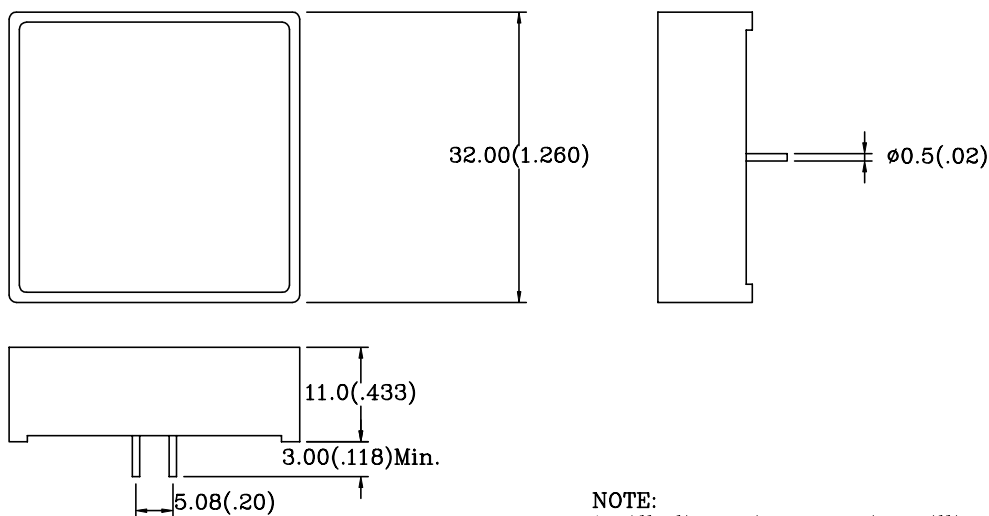
●ELECTRICAL AND OPTICAL CHARACTERISTICS (Ta=25°C)

Chip		Absolute Maximum Rating				Electro-optical Data (At 10mA)			Surface Color	Segment Color
Emitted Color	Peak Wave Length $\lambda P(\text{nm})$	$\Delta \lambda$ (nm)	Pd (mW)	If (mA)	Peak If (mA)	Vf(V)		Iv Typ. (mcd)		
						Typ.	Max.			
Green	568	30	80	30	150	2.2	2.5	10	White	White

●ABSOLUTE MAXIMUM RATINGS (Ta=25°C)

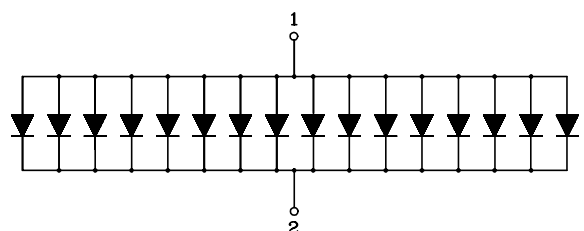
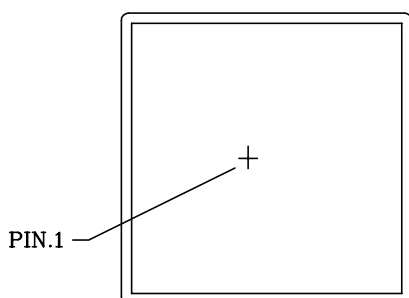
Reverse Voltage ..... 5V  
 Reverse Current (VR=5V) ..... 50μA  
 Operating Temperature Range ..... -40°C ~ 80°C  
 Storage Temperature Range ..... -40°C ~ 100°C  
 Lead Soldering Temperature (1/16" From Body).....260°C For 5 Seconds

### PACKAGE DIMENSIONS:



NOTE:  
 1. All dimensions are in millimeters (inches).  
 2. Tolerance is  $\pm 0.25\text{mm}$  (.010") unless otherwise specified.  
 3. Specifications are subject to change without notice.

### PIN FUNCTIONS:



RELEASED:

曾  
2000.08.02  
志宏

ENGINEER:

余  
2000.08.02  
芳芳